

PRODUCT INFORMATION PACKET



Model No: H969ES
Catalog No: H969ES

General Purpose Pump Motor, 2.0 HP, 3 Ph, 60 Hz, 575 V, 3600 RPM, F56J Frame, TEFC



Regal and Century are trademarks of Regal Rexnord Corporation or one of its affiliated companies.
©2022 Regal Rexnord Corporation, All Rights Reserved. MC017097E





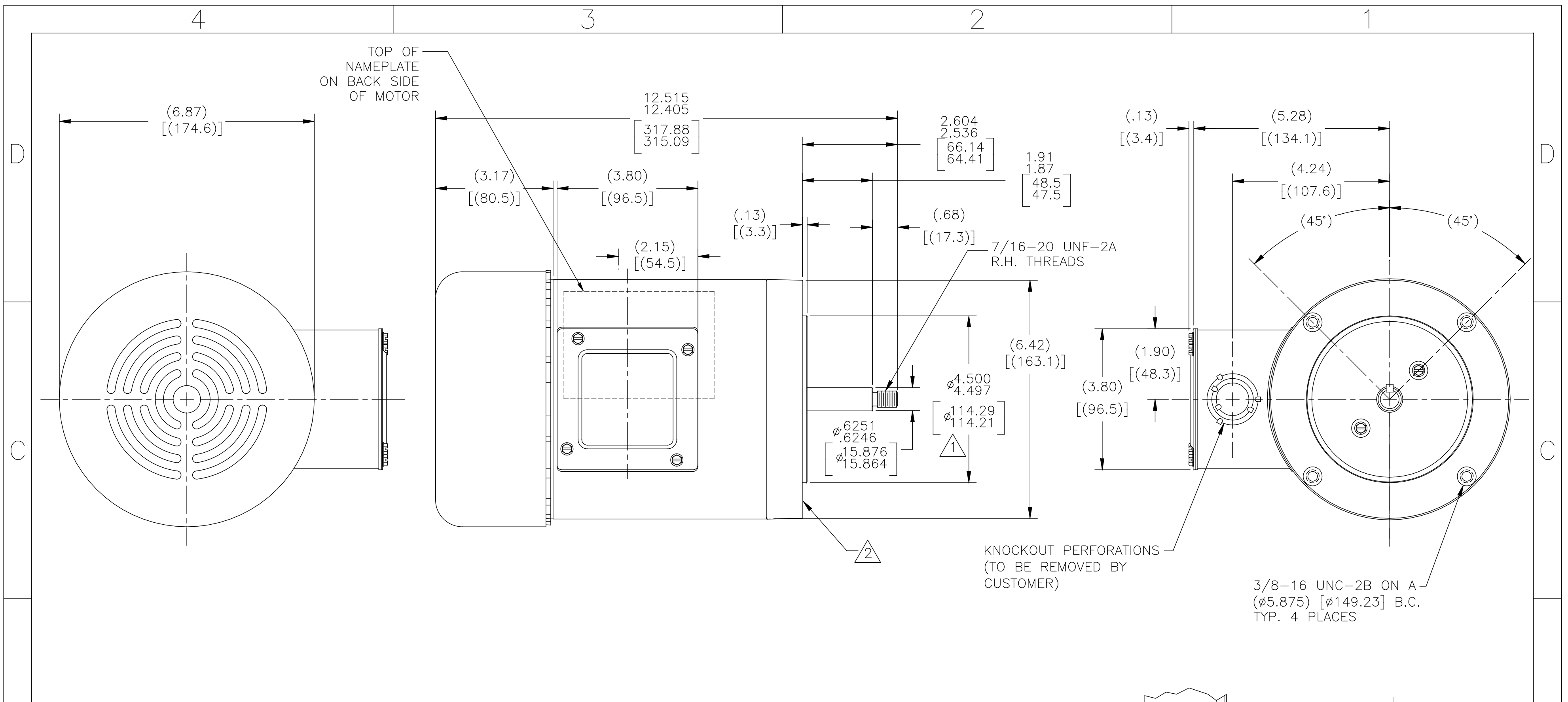
Nameplate Specifications

Output HP	2.0 Hp	Output KW	1.5 kW
Frequency	60 Hz	Voltage	575 V
Current	2.1 A	Speed	3450 rpm
Service Factor	1.15	Phase	3
Duty	Continuous	Insulation Class	B
Frame	F56J	Enclosure	Totally Enclosed Fan Cooled
Thermal Protection	No Protection	Ambient Temperature	40 °C
UL	Recognized	CSA	Y
CE	Y	Number of Speeds	1

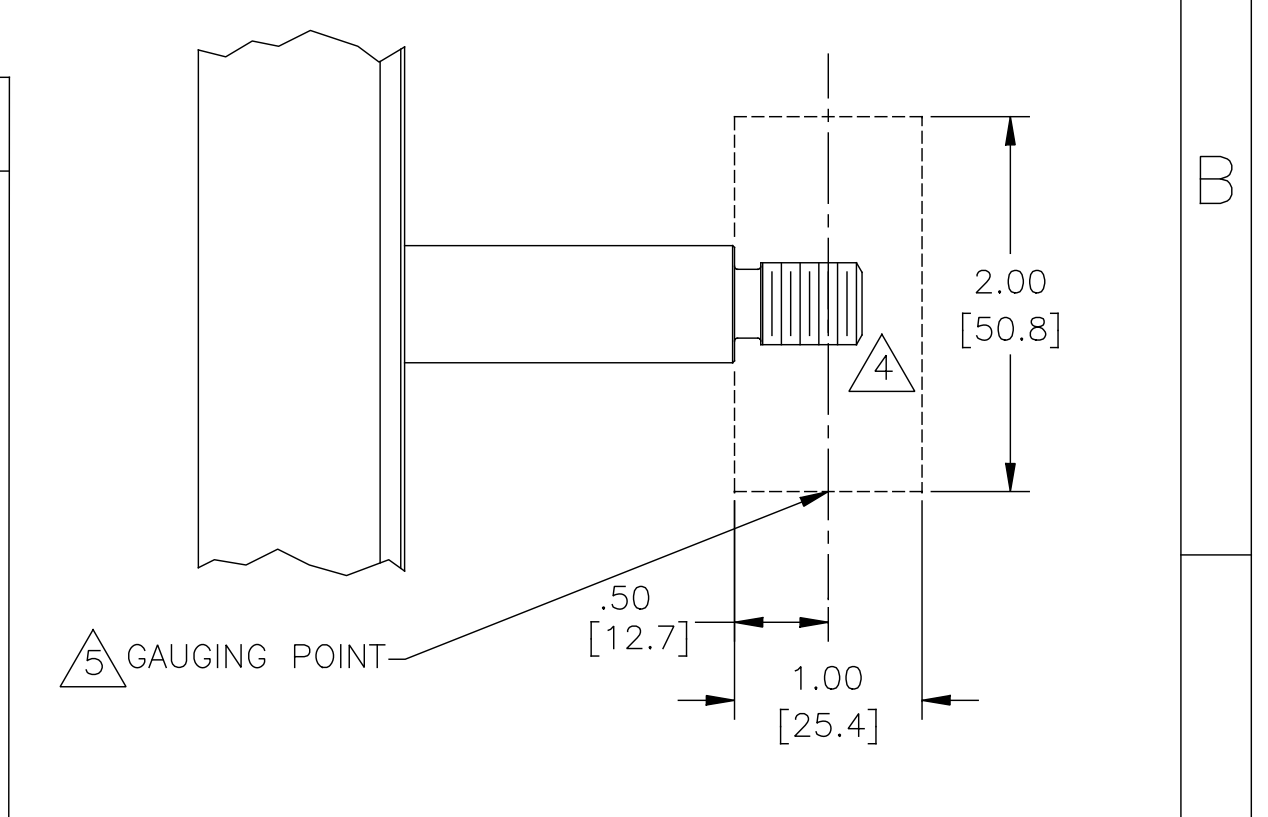
Technical Specifications

Electrical Type	Polyphase, Induction Type, Single Or Dual Voltage	Starting Method	Across The Line
Poles	2	Rotation	Reversible Clockwise
Mounting	Round	Drive End Bearing	Ball
Opp Drive End Bearing	Ball	Frame Material	Rolled Steel
Shaft Type	Threaded	Overall Length	12.52 in
Frame Length	5.75 in	Shaft Diameter	0.625 in
Shaft Extension	2.604 in		
Outline Drawing	H969ES-ES	Connection Drawing	18304035.PCX

This is an uncontrolled document once printed or downloaded and is subject to change without notice. Date Created:11/29/2022



NAMEPLATE DATA		EXTERNAL CONNECTION DIAGRAM	NOTES
MODEL: H969ES CUST PN: P56AJ15A01 HP: 2.0 SF: 1.15 ROT: RCW RPM: 3450 TYPE: SC FORM: CODE: K FRAME: F56J VOLTS: 575 AMPS: 2.1 MAX AMPS: - SF AMPS: 2.3 PH: 3 HZ: 60 INS: B AMB: 40°C DUTY: CONT ENCLOSURE: TE		183040-35 #1 RED — LINE A #2 WHITE — LINE B #3 BLUE — LINE C TO REVERSE, INTERCHANGE ANY TWO LINE LEADS.	⚠️ PILOT DIAMETER IS CONCENTRIC WITH SHAFT CENTERLINE WITHIN .004 T.I.R. ⚠️ FACE OF MOUNTING FLANGE IS PERPENDICULAR TO SHAFT CENTERLINE WITHIN .004 T.I.R. 3. SHAFT RUNOUT NOT TO EXCEED .002 T.I.R. 4. FOR THREADED SHAFT EXT. MATING PARTS SHOULD BE RELIEVED ONE THREAD TO CLEAR FILLET. 5. FOR THREADER SHAFT EXT. ECCENTRICITY OF THREADED PORTION OF SHAFT IS HELD WITHIN .004 TOTAL GAGE READING WITH THE INDICATOR ON O.D. OF GROUND RING AS SHOWN. THE GAGE BEING STATIONARY WITH RESPECT TO THE ROTOR. 6. END PLAY NOT TO EXCEED .010 MEASURED WITH NO THRUST 7. ALL DIMENSIONS SHOWN IN PARENTHESIS ARE REFERENCE DIMENSIONS.



PERFORMANCE CURVE		APPROVED SAMPLE	
SS0010536-4		CSA	
FILE#	CCN#	FILE#	GUIDE#
E44549	PRGY2	LR4642	4211-01
CUSTOMER	DISTRIBUTION		

DRAWING REVISION	REVISION BY	DATE	TOLERANCES UNLESS OTHERWISE SPECIFIED	DRAWN BY:
A			DEC. INCH mm ANGLE	L. ALMARAZ
ECO 0100237	APPROVED BY	DATE	.X ±0.1 [±2.5] ±0.5°	DATE: 04/13/2016
ECO DESCRIPTION			.XX ±0.02 [±0.51]	APPROVED BY: M. RODARTE
NEW			.XXX ±0.005 [±0.127]	DATE: 04/13/2016
<small>COPYRIGHT REGAL BELOIT AMERICA, INC. ALL RIGHTS RESERVED. PROPRIETARY AND CONFIDENTIAL INFORMATION - THIS DOCUMENT IS THE PROPERTY OF REGAL BELOIT AMERICA, INC. (OWNER) AND CONTAINS OWNER'S PROPRIETARY INFORMATION. ANY PERSON, CORPORATION OR OTHER FIRM RECEIVING IT IS DEEMED, BY RECEIVING IT, TO AGREE THAT IT, AND/OR ANY PART OF IT, SHALL NOT BE DISCLOSED TO ANY PERSON, CORPORATION OR OTHER ENTITY, DUPLICATED, AND/OR USED, EXCEPT AS EXPRESSLY APPROVED IN WRITING IN ADVANCE BY OWNER. THIS DOCUMENT SHALL BE RETURNED TO OWNER UPON REQUEST. IT MAY BE SUBJECT TO CERTAIN RESTRICTIONS UNDER APPLICABLE EXPORT CONTROL LAWS AND REGULATIONS.</small>			.XXXX ±0.0005 [±0.0127]	REFERENCE
			REMOVE BURRS & BREAK SHARP EDGES .003/.015 [0.076/.381]	MATERIAL
			CORNER FILLETS .02 [0.51]	PROCESS/FINISH
			MACHINED SURFACES 125/3.2	SIZE DWG NO
			mm SHOWN IN [BRACKETS]	THIRD ANGLE PROJECTION

Regal Beloit America, Inc.		DESCRIPTION	
		MODEL-CFHP-56FR	
		OUTLINE	
		MATERIAL	
		PROCESS/FINISH	
		SIZE DWG NO	
		H969ES	
		SHEET	
		1	