

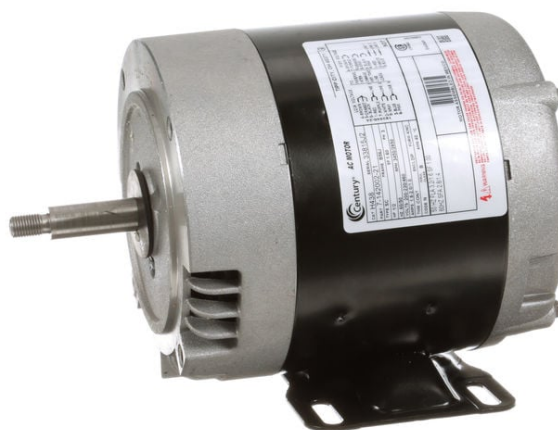
PRODUCT INFORMATION PACKET



Model No: H438

Catalog No: H438

General Purpose Motor, 1/2 HP, 3 Ph, 60 Hz, 200-230/460 V, 3600 RPM, B56J Frame, DP



Regal and Century are trademarks of Regal Rexnord Corporation or one of its affiliated companies.
©2022 Regal Rexnord Corporation, All Rights Reserved. MC017097E





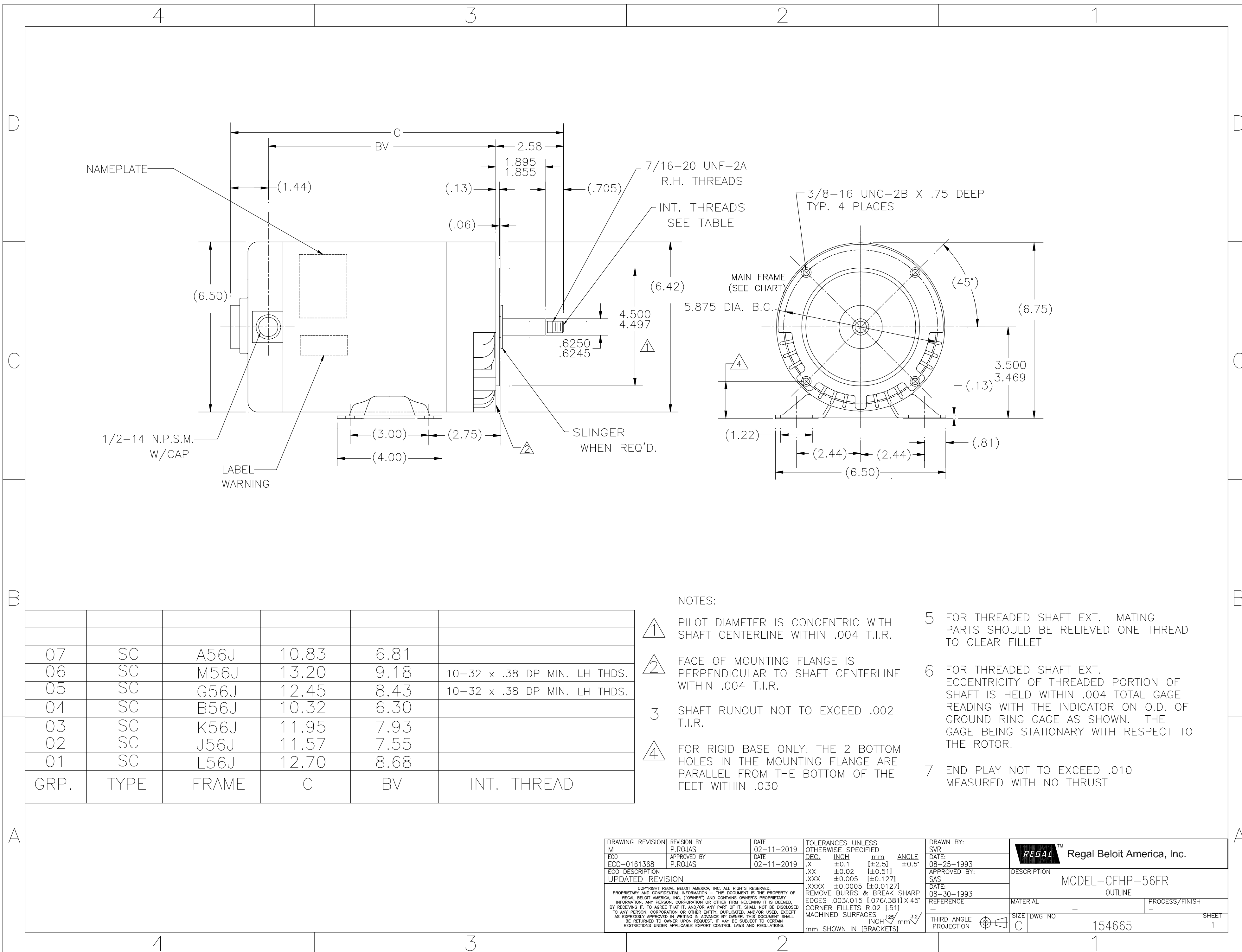
Nameplate Specifications

Output HP	1/2 Hp	Output KW	0.37 kW
Frequency	60 Hz	Voltage	200-230/460 V
Current	1.8-2.0/1.0 A	Speed	3450/2850 rpm
Service Factor	1.6	Phase	3
Duty	Continuous	Insulation Class	B
Frame	B56J	Enclosure	Drip Proof
Thermal Protection	No Protection	Ambient Temperature	40 °C
UL	Recognized	CSA	Y
CE	N	Number of Speeds	1

Technical Specifications

Electrical Type	Polyphase, Induction Type, Single Or Dual Voltage	Starting Method	Across The Line
Poles	2	Rotation	Reversible Counterclockwise
Mounting	Rigid Base	Drive End Bearing	Ball
Opp Drive End Bearing	Ball	Frame Material	Rolled Steel
Shaft Type	Threaded	Overall Length	10.32 in
Frame Length	3.88 in	Shaft Diameter	0.625 in
Shaft Extension	2.58 in		
Connection Drawing	18304024.PCX	Outline Drawing	154665-S01

This is an uncontrolled document once printed or downloaded and is subject to change without notice. Date Created:11/29/2022



07	SC	A56J	10.83	6.81	
06	SC	M56J	13.20	9.18	10-32 x .38 DP MIN. LH THDS.
05	SC	G56J	12.45	8.43	10-32 x .38 DP MIN. LH THDS.
04	SC	B56J	10.32	6.30	
03	SC	K56J	11.95	7.93	
02	SC	J56J	11.57	7.55	
01	SC	L56J	12.70	8.68	
GRP.	TYPE	FRAME	C	BV	INT. THREAD

NOTES:

- ① PILOT DIAMETER IS CONCENTRIC WITH SHAFT CENTERLINE WITHIN .004 T.I.R.
- ② FACE OF MOUNTING FLANGE IS PERPENDICULAR TO SHAFT CENTERLINE WITHIN .004 T.I.R.
- ③ SHAFT RUNOUT NOT TO EXCEED .002 T.I.R.
- ④ FOR RIGID BASE ONLY: THE 2 BOTTOM HOLES IN THE MOUNTING FLANGE ARE PARALLEL FROM THE BOTTOM OF THE FEET WITHIN .030
- ⑤ FOR THREADED SHAFT EXT. MATING PARTS SHOULD BE RELIEVED ONE THREAD TO CLEAR FILLET
- ⑥ FOR THREADED SHAFT EXT. ECCENTRICITY OF THREADED PORTION OF SHAFT IS HELD WITHIN .004 TOTAL GAGE READING WITH THE INDICATOR ON O.D. OF GROUND RING GAGE AS SHOWN. THE GAGE BEING STATIONARY WITH RESPECT TO THE ROTOR.
- ⑦ END PLAY NOT TO EXCEED .010 MEASURED WITH NO THRUST

DRAWING REVISION M	REVISION BY P.ROJAS	DATE 02-11-2019	TOLERANCES UNLESS OTHERWISE SPECIFIED DEC. INCH mm ANGLE .X ±0.1 [±2.5] ±0.5° .XX ±0.02 [±0.51] .XXX ±0.005 [±0.127] .XXXX ±0.0005 [±0.0127]	DRAWN BY: SVR	Regal Beloit America, Inc.
ECO ECO-0161368	APPROVED BY P.ROJAS	DATE 02-11-2019	REMOVE BURRS & BREAK SHARP EDGES .003/.015 [0.076/.381] X 45° CORNER FILLETS R.02 [5.1] MACHINED SURFACES 125 INCH/mm 3.2	DATE: 08-25-1993	
ECO DESCRIPTION UPDATED REVISION				APPROVED BY: SAS	DESCRIPTION MODEL-CFHP-56FR OUTLINE
<small>COPYRIGHT REGAL BELOIT AMERICA, INC. ALL RIGHTS RESERVED. PROPRIETARY AND CONFIDENTIAL INFORMATION - THIS DOCUMENT IS THE PROPERTY OF REGAL BELOIT AMERICA, INC. (OWNER) AND CONTAINS OWNER'S PROPRIETARY INFORMATION. ANY PERSON, CORPORATION OR OTHER FIRM RECEIVING IT IS DEEMED, BY RECEIVING IT, TO AGREE THAT IT, AND/OR ANY PART OF IT, SHALL NOT BE DISCLOSED TO ANY PERSON, CORPORATION OR OTHER ENTITY, DUPLICATED, AND/OR USED, EXCEPT AS EXPRESSLY APPROVED IN WRITING IN ADVANCE BY OWNER. THIS DOCUMENT SHALL BE RETURNED TO OWNER UPON REQUEST. IT MAY BE SUBJECT TO CERTAIN RESTRICTIONS UNDER APPLICABLE EXPORT CONTROL LAWS AND REGULATIONS.</small>				DATE: 08-30-1993	MATERIAL -
				REFERENCE -	PROCESS/FINISH -
				THIRD ANGLE PROJECTION	SIZE DWG NO C 154665
					SHEET 1