

# PRODUCT INFORMATION PACKET



Model No: B2858

Catalog No: B2858

Pool Pump Motor, 1.5 HP, 1 Ph, 60 Hz, 230/115 V, 3600 RPM, Y56Y Frame, DP



Regal and Century are trademarks of Regal Rexnord Corporation or one of its affiliated companies.  
©2022 Regal Rexnord Corporation, All Rights Reserved. MC017097E





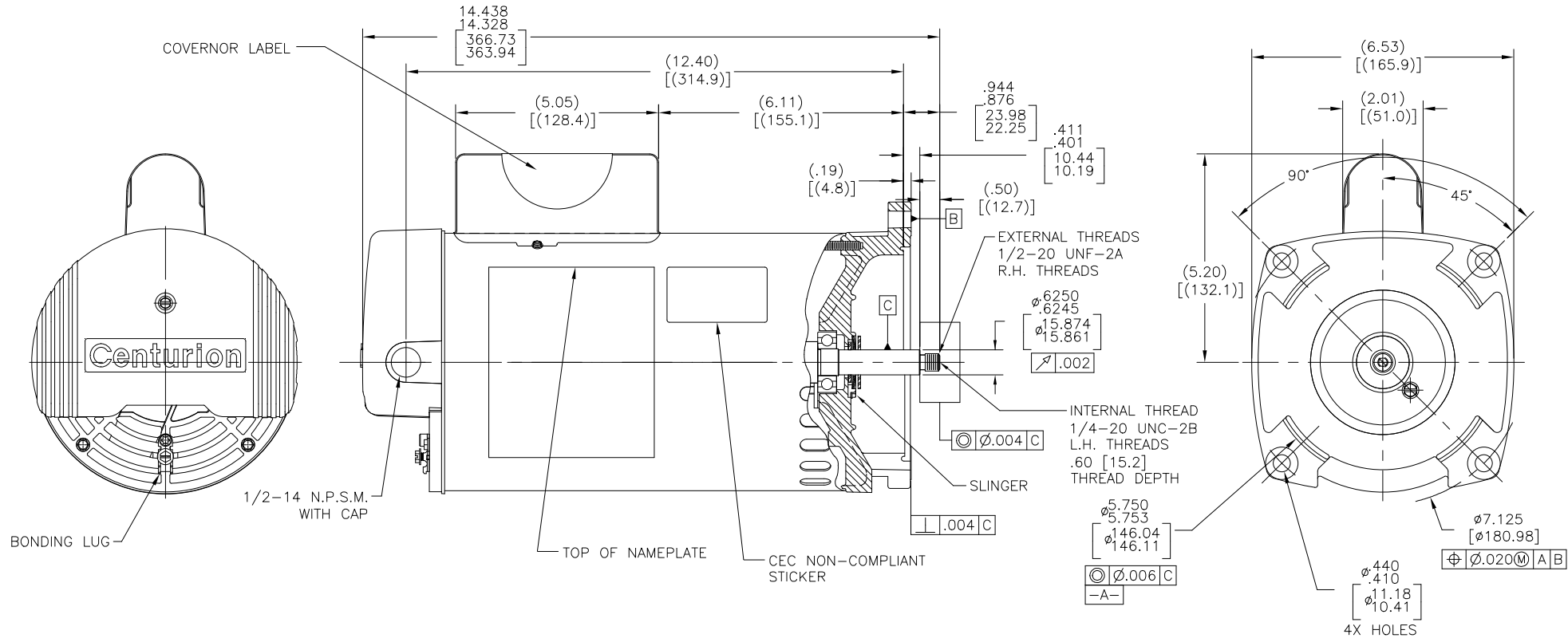
**Nameplate Specifications**

Output HP	1.5 Hp	Output KW	1.1 kW
Frequency	60 Hz	Voltage	230/115 V
Current	SF 10.5/21.0 A	Speed	3450 rpm
Service Factor	1.5	Phase	1
Duty	Continuous	Insulation Class	F
Frame	Y56Y	Enclosure	Drip Proof
Thermal Protection	Thermally Protected	Ambient Temperature	50 °C
UL	Recognized	CSA	Y
Number of Speeds	1		

**Technical Specifications**

Electrical Type	Permanent Split Capacitor, Single Or Dual Voltage	Poles	2
Rotation	Counterclockwise Pump End	Mounting	Round
Motor Orientation	Horizontal	Drive End Bearing	Ball
Opp Drive End Bearing	Ball	Frame Material	Rolled Steel
Shaft Type	1/2 Threaded	Overall Length	14.40 in
Frame Length	10.00 in	Shaft Diameter	0.625 in
Shaft Extension	0.91 in		
Outline Drawing	B2858-S01	Connection Drawing	17536729.PCX

This is an uncontrolled document once printed or downloaded and is subject to change without notice. Date Created:11/29/2022



NAMEPLATE DATA	EXTERNAL CONNECTION DIAGRAM	NOTES
MODEL: 196262 CUST PN: B2858 HP: 1.5 SF: 1.5 ROT: CCWPE RPM: 3450 TYPE: CX CODE: K FORM: FRAME: Y 56 Y VOLTS: 230/115 AMPS: SF 10.5/21.0 MAX AMPS: - SF AMPS: - PH: 1 HZ: 60 INS: F AMB: 50 C DUTY: CONT ENCLOSURE: DP THERMALLY PROTECTED	<p>175367-29</p> <p>HIGH VOLTAGE SHOWN. ROTATE DIAL CCW TO 115 FOR LOW VOLTAGE.</p> <p>USE COPPER CONDUCTORS ONLY. INSTALL MOTOR WITH VENTS DOWN.</p> <p>ACCEPTABLE FOR FIELD WIRING</p>	<ol style="list-style-type: none"> <li>FOR THREADED SHAFT EXTENSION ECCENTRICITY OF THREADED PORTION OF SHAFT IS HELD WITHIN .004[.10] TOTAL GAGE READING WITH THE INDICATOR ON O.D. OF GROUND RING GAGE AS SHOWN. THE GAGE BEING STATIONARY WITH RESPECT TO THE ROTOR.</li> <li>END PLAY NOT TO EXCEED .010[.25] MEASURED WITH NO THRUST.</li> <li>FINISH PAINT TO BE BLACK.</li> <li>REFERENCE MODEL: B858.</li> <li>CONNECTED FOR 230V. DUAL VOLTAGE MOTOR. SEE CONNECTION DIAGRAM TO CHANGE VOLTS TO 115V.</li> <li>CTQ REQUIREMENT SEE EP000105-008</li> <li>RoHS &amp; REACH REQUIREMENT SEE EP000014.</li> </ol>

PERFORMANCE CURVE	APPROVED SAMPLE		
16387811	0601046		
UL COMPONENT	CSA		
FILE#	CCN#	FILE#	GUIDE#
PENDING	PENDING	PENDING	PENDING
CUSTOMER	DISTRIBUTION		

CRITICAL TO QUALITY CHARACTERISTICS(CTQs) (P) PROCESS (E) ENGINEERING (A) APPLICATION (R) REGULATORY (L) LIFE	DRAWING REVISION	REVISION BY	DATE	TOLERANCES UNLESS OTHERWISE SPECIFIED DEC. INCH mm ANGLE .X ±0.1 [±3] ±0.5° .XX ±0.02 [±0.5] .XXX ±0.005 [±0.13] .XXXX ±0.0005 [±0.013] REMOVE BURRS & BREAK SHARP EDGES .003/.015 [.08/.38] CORNER FILLETS .02 [5] MACHINED SURFACES .125 INCH / mm 3/2 mm SHOWN IN [BRACKETS]	DRAWN BY:	Regal Beloit America, Inc. DESCRIPTION: MODEL-CFHP-56FR OUTLINE MATERIAL: _____ PROCESS/FINISH: _____ SIZE DWG NO: B2858 SHEET 1
	ECO	APPROVED BY	DATE		DATE:	
	ECO DESCRIPTION	TRISTIA.ZHAO	04-09-2022		11/16/2017	
	SEE ECR				11/16/2011	