

# PRODUCT INFORMATION PACKET



Model No: Q3302V1

Catalog No: Q3302V1

Pool Pump Motor, 3.0 HP, 3 Ph, 60 Hz, 208-230/460 V, 3600 RPM, Y56Y Frame, ODP



Regal and Century are trademarks of Regal Rexnord Corporation or one of its affiliated companies.  
©2022 Regal Rexnord Corporation, All Rights Reserved. MC017097E





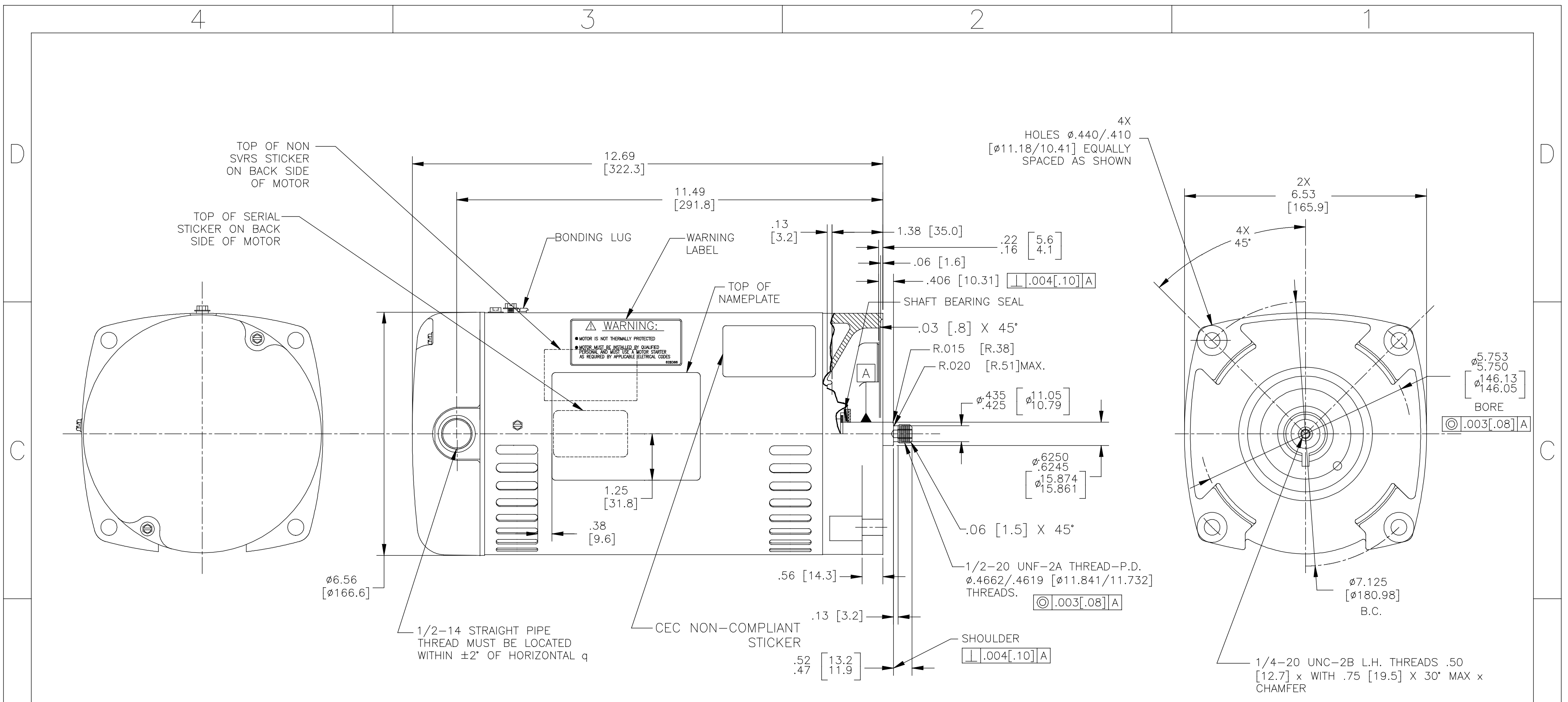
**Nameplate Specifications**

Output HP	3.0 Hp	Output KW	2.2 kW
Frequency	60 Hz	Voltage	208-230/460 V
Current	SF 10/5 A	Speed	3450 rpm
Service Factor	1.15	Phase	3
Duty	Continuous	Insulation Class	B
Frame	Y56Y	Enclosure	Open Drip Proof
Thermal Protection	No Protection	Ambient Temperature	50 °C
UL	Recognized	CSA	Y
Number of Speeds	3450		

**Technical Specifications**

Electrical Type	Polyphase, Induction Type, Single Or Dual Voltage	Starting Method	Across The Line
Poles	2	Rotation	Counterclockwise Pump End
Mounting	Round	Motor Orientation	Horizontal
Drive End Bearing	Ball	Opp Drive End Bearing	Ball
Frame Material	Rolled Steel	Shaft Type	1/2 Thread
Overall Length	13.38 in	Frame Length	9.00 in
Shaft Diameter	0.625 in	Shaft Extension	0.906 in
Outline Drawing	Q3302V1-S01	Connection Drawing	18304024.PCX

This is an uncontrolled document once printed or downloaded and is subject to change without notice. Date Created:11/28/2022



NAMEPLATE DATA	EXTERNAL CONNECTION DIAGRAM	NOTES									
MODEL: 196449 CUST PN: Q3302V1 HP: 3.0 SF: 1.15 ROT: CCWPE RPM: 3450 TYPE: SC CODE: N FORM: FRAME: Y 56 Y VOLTS: 200-230/460 AMPS: MAX AMPS: SF 10/5 SF AMPS: - PH: 3 HZ: 60 INS: B AMB: 50°C DUTY: CONT ENCLOSURE: ODP THERMALLY PROTECTED	<table border="1"> <tr> <th>LOW VOLTAGE</th> <th>TO REVERSE, INTER-CHANGE ANY TWO LINE LEADS.</th> <th>HIGH VOLTAGE</th> </tr> <tr> <td>                     4-BROWN                      5-ORANGE                      6-BLACK                      1-RED                      7-PURPLE                      2-WHITE                      8-GRAY                      9-PINK                 </td> <td>                     TO REVERSE, INTER-CHANGE ANY TWO LINE LEADS.                 </td> <td>                     4-BROWN                      7-PURPLE                      5-ORANGE                      8-GRAY                      6-BLACK                      9-PINK                      1-RED                      2-WHITE                      3-BLUE                 </td> </tr> <tr> <td>                     LINE 1                      LINE 2                      LINE 3                 </td> <td></td> <td>                     LINE 1                      LINE 2                      LINE 3                 </td> </tr> </table>	LOW VOLTAGE	TO REVERSE, INTER-CHANGE ANY TWO LINE LEADS.	HIGH VOLTAGE	4-BROWN 5-ORANGE 6-BLACK 1-RED 7-PURPLE 2-WHITE 8-GRAY 9-PINK	TO REVERSE, INTER-CHANGE ANY TWO LINE LEADS.	4-BROWN 7-PURPLE 5-ORANGE 8-GRAY 6-BLACK 9-PINK 1-RED 2-WHITE 3-BLUE	LINE 1 LINE 2 LINE 3		LINE 1 LINE 2 LINE 3	1. FINISH PAINT TO BE STAIN BLACK EXCEPT PUMP END FRAME 2. 7/16" WRENCH FLATS ON SHAFT FOR ACCESS TO THIS WRENCH FLAT REMOVE END COVER. 3. STAINLESS STEEL SHAFT 4. LIMITS ON AMPLITUDE OF VIBRATION MEASURED AT BEARING HOUSING=.001[.03].
LOW VOLTAGE	TO REVERSE, INTER-CHANGE ANY TWO LINE LEADS.	HIGH VOLTAGE									
4-BROWN 5-ORANGE 6-BLACK 1-RED 7-PURPLE 2-WHITE 8-GRAY 9-PINK	TO REVERSE, INTER-CHANGE ANY TWO LINE LEADS.	4-BROWN 7-PURPLE 5-ORANGE 8-GRAY 6-BLACK 9-PINK 1-RED 2-WHITE 3-BLUE									
LINE 1 LINE 2 LINE 3		LINE 1 LINE 2 LINE 3									

PERFORMANCE CURVE	APPROVED SAMPLE		
01167001	0701770		
UL COMPONENT	CSA		
FILE#	CCN#	FILE#	GUIDE#
E44549	PRGY2	LR4642	4211-01
CUSTOMER	DISTRIBUTION SERVICES		

DRAWING REVISION	REVISION BY	DATE	TOLERANCES UNLESS OTHERWISE SPECIFIED	DRAWN BY:	Regal Beloit America, Inc.	
G	P.ROJAS	04-29-2019	DEC. INCH mm ANGLE	TOM ZHAO		
ECO	APPROVED BY	DATE	.XX ±0.1 [±2.5] ±0.5°	DATE:		
ECO-0165900	P.ROJAS	04-29-2019	.XX ±0.02 [±0.51]	03-21-2008		
ECO DESCRIPTION	SEE ECO			APPROVED BY:	DESCRIPTION	
COPYRIGHT REGAL BELOIT AMERICA, INC. ALL RIGHTS RESERVED. PROPRIETARY AND CONFIDENTIAL INFORMATION - THIS DOCUMENT IS THE PROPERTY OF REGAL BELOIT AMERICA, INC. (OWNER) AND CONTAINS OWNER'S PROPRIETARY INFORMATION. ANY PERSON, CORPORATION OR OTHER FIRM RECEIVING IT IS DEEMED, BY RECEIVING IT, TO AGREE THAT IT, AND/OR ANY PART OF IT, SHALL NOT BE DISCLOSED TO ANY PERSON, CORPORATION OR OTHER ENTITY, DUPLICATED, AND/OR USED, EXCEPT AS EXPRESSLY APPROVED IN WRITING IN ADVANCE BY OWNER. THIS DOCUMENT SHALL BE RETURNED TO OWNER UPON REQUEST. IT MAY BE SUBJECT TO CERTAIN RESTRICTIONS UNDER APPLICABLE EXPORT CONTROL LAWS AND REGULATIONS.				MIKE O	MODEL-PFHP-56FR	
				DATE:	OUTLINE	
				03-21-2008	MATERIAL	PROCESS/FINISH
				REFERENCE		
				THIRD ANGLE PROJECTION	SIZE DWG NO	SHEET
					C Q3302V1	1