

# PRODUCT INFORMATION PACKET



Model No: H955L

Catalog No: H955L

General Purpose Motor, 3.0 HP, 3 Ph, 60 Hz, 575 V, 1800 RPM, RA56HZ Frame, DP



Regal and Century are trademarks of Regal Rexnord Corporation or one of its affiliated companies.

©2023 Regal Rexnord Corporation, All Rights Reserved. MC017097E





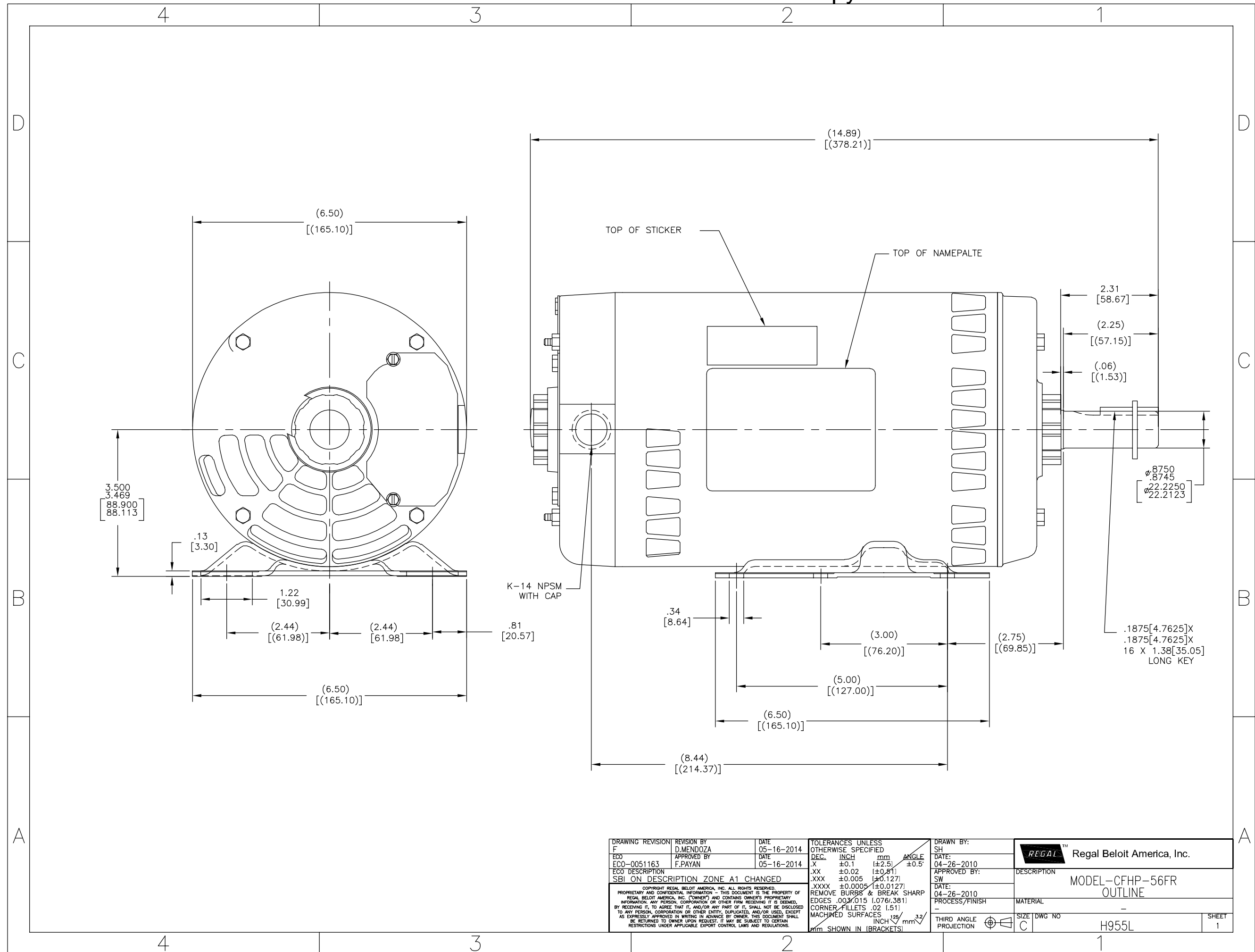
**Nameplate Specifications**

Phase	<b>3</b>	Output HP	<b>3.0 Hp</b>
Output KW	<b>2.2 KW</b>	Voltage	<b>575 V</b>
Speed	<b>1725 rpm</b>	Service Factor	<b>1.15</b>
Frame	<b>RA56HZ</b>	Enclosure	<b>Drip Proof</b>
Thermal Protection	<b>Thermally Protected</b>	Ambient Temperature	<b>40 °C</b>
Frequency	<b>60 Hz</b>	Current	<b>3.7 A</b>
Duty	<b>Continuous</b>	Insulation Class	<b>B</b>
UL	<b>Recognized</b>	CSA	<b>Y</b>
CE	<b>N</b>	Number of Speeds	<b>1</b>

**Technical Specifications**

Electrical Type	<b>Polyphase, Induction Type, Single Or Dual Voltage</b>	Starting Method	<b>Across The Line</b>
Poles	<b>4</b>	Rotation	<b>Reversible Counterclockwise</b>
Mounting	<b>Rigid Base</b>	Drive End Bearing	<b>Ball</b>
Opp Drive End Bearing	<b>Ball</b>	Frame Material	<b>Rolled Steel</b>
Shaft Type	<b>Keyed</b>	Overall Length	<b>14.89 in</b>
Frame Length	<b>8.75 in</b>	Shaft Diameter	<b>0.875 in</b>
Shaft Extension	<b>2.31 in</b>		
Connection Drawing	<b>17050814.PCX</b>	Outline Drawing	<b>H955L-S01</b>

This is an uncontrolled document once printed or downloaded and is subject to change without notice. Date Created:04/27/2023



DRAWING REVISION F	REVISION BY D.MENDOZA	DATE 05-16-2014	TOLERANCES UNLESS OTHERWISE SPECIFIED DEC. INCH mm ANGLE .X ±0.1 [±2.5] ±0.5° .XX ±0.02 [±0.51] .XXX ±0.005 [±0.127] .XXXX ±0.0005 [±0.0127]	DRAWN BY: SH	Regal Beloit America, Inc.
ECD ECO-0051163	APPROVED BY F.PAYAN	DATE 05-16-2014	REMOVE BURRS & BREAK SHARP EDGES .003/.015 [0.076/.381] CORNER/FILLETS .02 [1.51] MACHINED SURFACES $\frac{125}{\sqrt{}} \frac{3.2}{\sqrt{}}$ INCH/mm mm SHOWN IN [BRACKETS]	DATE: 04-26-2010	
SBI ON DESCRIPTION_ZONE_A1_CHANGED				APPROVED BY: SW	MATERIAL
<small>COPYRIGHT REGAL BELOIT AMERICA, INC. ALL RIGHTS RESERVED. PROPRIETARY AND CONFIDENTIAL INFORMATION - THIS DOCUMENT IS THE PROPERTY OF REGAL BELOIT AMERICA, INC. (OWNER) AND CONTAINS OWNER'S PROPRIETARY INFORMATION. ANY PERSON, CORPORATION OR OTHER FIRM RECEIVING IT IS DEEMED, BY RECEIVING IT, TO AGREE THAT IT, AND/OR ANY PART OF IT, SHALL NOT BE DISCLOSED TO ANY PERSON, CORPORATION OR OTHER ENTITY, DUPLICATED, AND/OR USED, EXCEPT AS EXPRESSLY APPROVED IN WRITING IN ADVANCE BY OWNER. THIS DOCUMENT SHALL BE RETURNED TO OWNER UPON REQUEST. IT MAY BE SUBJECT TO CERTAIN RESTRICTIONS UNDER APPLICABLE EXPORT CONTROL LAWS AND REGULATIONS.</small>				DATE: 04-26-2010	SIZE DWG NO C H955L
				PROCESS/FINISH	SHEET 1
				THIRD ANGLE PROJECTION	