

PRODUCT INFORMATION PACKET

marathon[®]
Motors

Model No: 184TTWD14031

Catalog No: N407

5 HP Washdown Motor, 3 phase, 1800 RPM, 208-230/460 V, 184TCV Frame, TEFC
General Purpose Motors

Regal and Marathon are trademarks of Regal Rexnord Corporation or one of its affiliated companies.
©2021 Regal Rexnord Corporation, All Rights Reserved. MC017097E

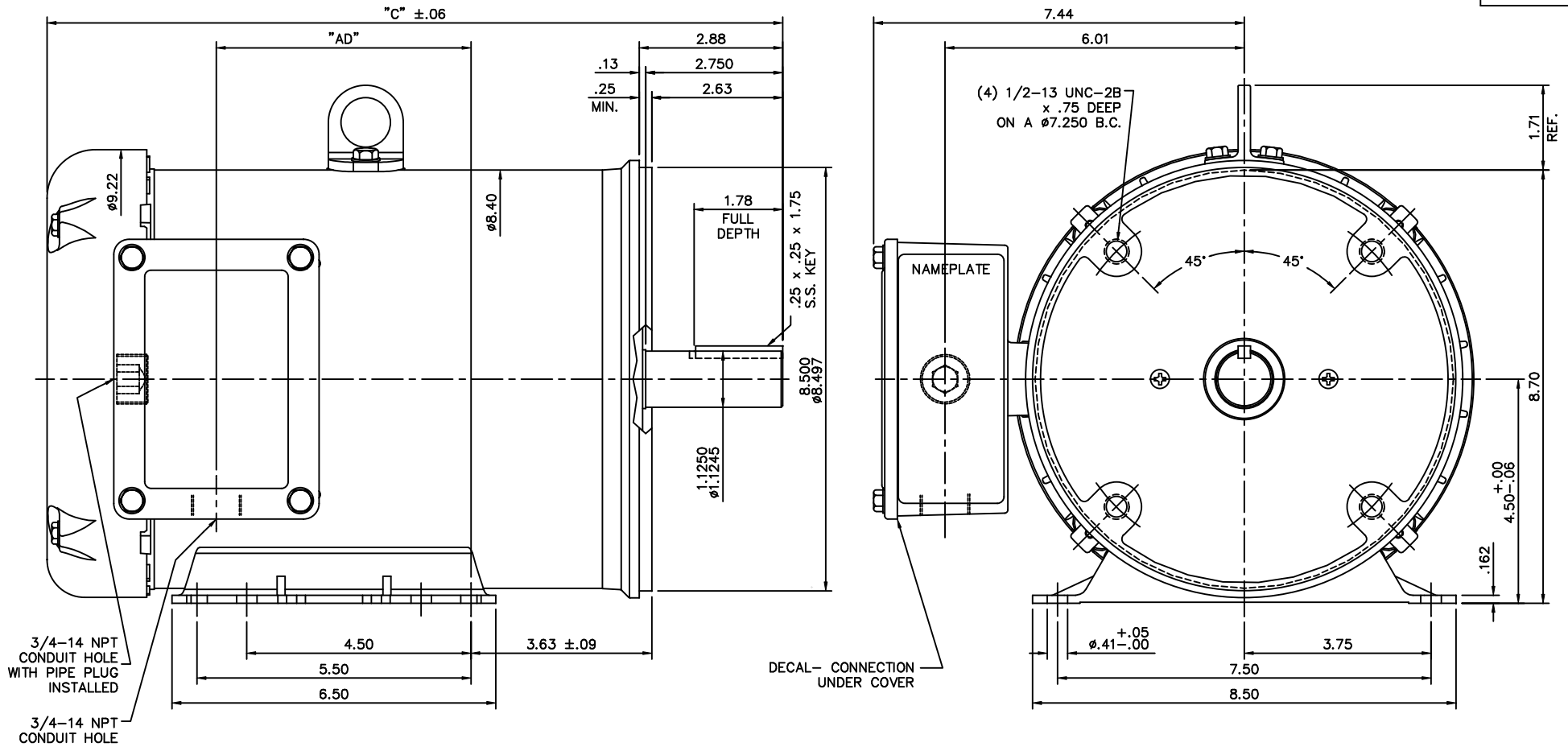
RegalRexnord

Nameplate Specifications

Output HP	5 Hp	Output KW	3.7 kW
Frequency	60 Hz	Voltage	208-230/460 V
Current	14.0-13.0/6.5 A	Speed	1750 rpm
Service Factor	1.15	Phase	3
Efficiency	87.5 %	Power Factor	82.3
Duty	Continuous	Insulation Class	F
Design Code	B	KVA Code	J
Frame	184TCV	Enclosure	Totally Enclosed Fan Cooled
Thermal Protection	No	Ambient Temperature	40 °C
Drive End Bearing Size	6207	Opp Drive End Bearing Size	6207
UL	Recognized	CSA	Y
CE	Y	IP Code	55
Number of Speeds	1		

Technical Specifications

Electrical Type	Squirrel Cage Inverter Rated	Starting Method	Line Or Inverter
Poles	4	Rotation	Reversible
Resistance Main	3.08 Ohms	Mounting	Rigid Base
Motor Orientation	Horizontal Or Shaft Down	Drive End Bearing	Ball
Opp Drive End Bearing	Ball	Frame Material	Stainless Steel
Shaft Type	T	Overall Length	14.27 in
Frame Length	8.50 in	Shaft Diameter	1.125 in
Shaft Extension	2.75 in	Assembly/Box Mounting	F1/F2 CAPABLE
Connection Drawing	005010.01ME	Outline Drawing	035479-850



3/4-14 NPT CONDUIT HOLE WITH PIPE PLUG INSTALLED

3/4-14 NPT CONDUIT HOLE

MAXIMUM FACE RUNOUT TO BE .004 T.I.R.
 MAXIMUM PILOT ECCENTRICITY TO BE .004 T.I.R.
 PERMISSIBLE SHAFT RUNOUT TO BE .002 T.I.R.

SPECIAL FEATURES:

- 1) DOUBLE LIP OIL SEALS BOTH ENDS.
- 2) GASKETS THROUGHOUT.
- 3) O-RING SEALED ENDBELLS & THRU BOLTS.
- 4) LOCKED BEARING W/SEALED LOCK SCREWS.

DASH NO.	"C"	"AD"
850	14.27	4.61
900	14.77	5.11
950	15.27	5.61

		TOLERANCES UNLESS SPECIFIED		MARATHON ELECTRIC		DRAWN LST 7/23/03
		DEC.	INCHES			CHK
		.X	±.1			APPD RW 7/24/03
		.XX	±.03	TITLE		SCALE 1=2
02	ADDED DASH NO 850	ST	6/20/07	OUTLINE- 180TC FRAME		REF 035437
01	14.77 WAS 14.87, 15.27 WAS 15.37	JJK	9/25/03	TEFC- RIGID "C"		FMF
		.XXX	±.005	MAT'L		PREV
		.XXXX	±.0005	STAINLESS STEEL DUCK		
NO.	REVISION	BY & DATE	CHK	ANG	±1/2"	FINISH
			RFP			CAD FILE 035479
			DIST			SIZE B DRAWING NO. 035479
						REV. 02

THIS DRAWING IN DESIGN AND DETAIL IS OUR PROPERTY AND MUST NOT BE USED EXCEPT IN CONNECTION WITH OUR WORK. ALL RIGHTS OF DESIGN AND INVENTION ARE RESERVED. THIS IS AN ELECTRONICALLY GENERATED DOCUMENT - DO NOT SCALE THIS PRINT

VIEW FROM OUTSIDE OF MOTOR AT SWITCH END.



VOLTAGE	L1	L2	L3	JOIN & INSULATE
HIGH	T1	T2	T3	(T4,T7) (T5,T8) (T6,T9)
LOW	T1,T7	T2,T8	T3,T9	T4,T5,T6

		TOLERANCES UNLESS SPECIFIED		DRAWN RDW 04/12/02						
		DEC.	INCHES	CHK						
		.X	±.1	APPD						
		.XX	±.01	SCALE 1=1						
		.XXX	±.005	REF FIG.2-51						
		.XXXX	±.0005	FMF						
NO.	REVISION	BY & DATE	CHK	ANG	±1/2'	FINISH	PREV			
			RFP	04/12/02		CAD FILE	00501001ME	SIZE	DRAWING NO.	REV.
			DIST					A	005010-01ME	

THIS DRAWING IN DESIGN AND DETAIL IS OUR PROPERTY AND MUST NOT BE USED EXCEPT IN CONNECTION WITH OUR WORK ALL RIGHTS OF DESIGN AND INVENTION ARE RESERVED THIS IS AN ELECTRONICALLY GENERATED DOCUMENT - DO NOT SCALE THIS PRINT



TITLE EXTERNAL WIRING DIAGRAM 3 PHASE W/O PROTECTOR
MAT'L. DECAL - 004014