

# PRODUCT INFORMATION PACKET



Model No: V101V1

Catalog No: V101V1

General Purpose Motor, 1.5 HP, 1 Ph, 60 Hz, 115/208-230 V, 1800 RPM, 145T Frame, DP



Regal and Century are trademarks of Regal Rexnord Corporation or one of its affiliated companies.

©2023 Regal Rexnord Corporation, All Rights Reserved. MC017097E





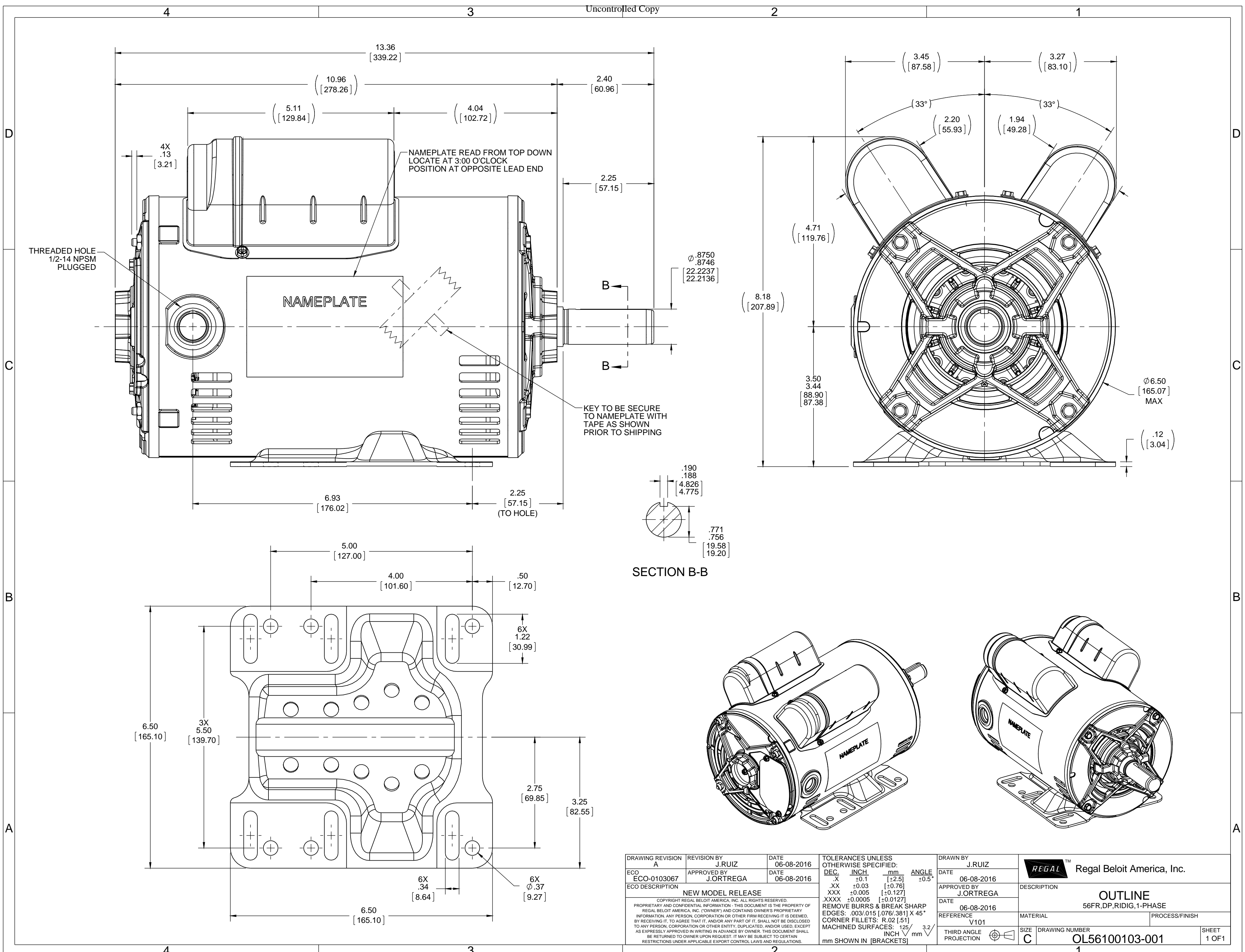
**Nameplate Specifications**

Output HP	1.5 Hp	Output KW	1.1 kW
Frequency	60 Hz	Voltage	115/208-230 V
Current	13.0/7.0-6.5 A	Speed	1725 rpm
Service Factor	1.2	Phase	1
Efficiency	81.5 %	Duty	Continuous
Insulation Class	B	Frame	145T
Enclosure	Drip Proof	Thermal Protection	No Protection
Ambient Temperature	40 °C	UL	Recognized
CSA	Y	CE	Y
Number of Speeds	1		

**Technical Specifications**

Electrical Type	Capacitor Start Capacitor Run	Starting Method	Across The Line
Poles	4	Rotation	Selective Counterclockwise
Mounting	Rigid Base	Drive End Bearing	Ball
Opp Drive End Bearing	Ball	Frame Material	Rolled Steel
Shaft Type	T	Overall Length	13.36 in
Frame Length	8.65 in	Shaft Diameter	0.875 in
Shaft Extension	2.25 in		
Outline Drawing	OL56100103-001	Connection Drawing	DD10039-001

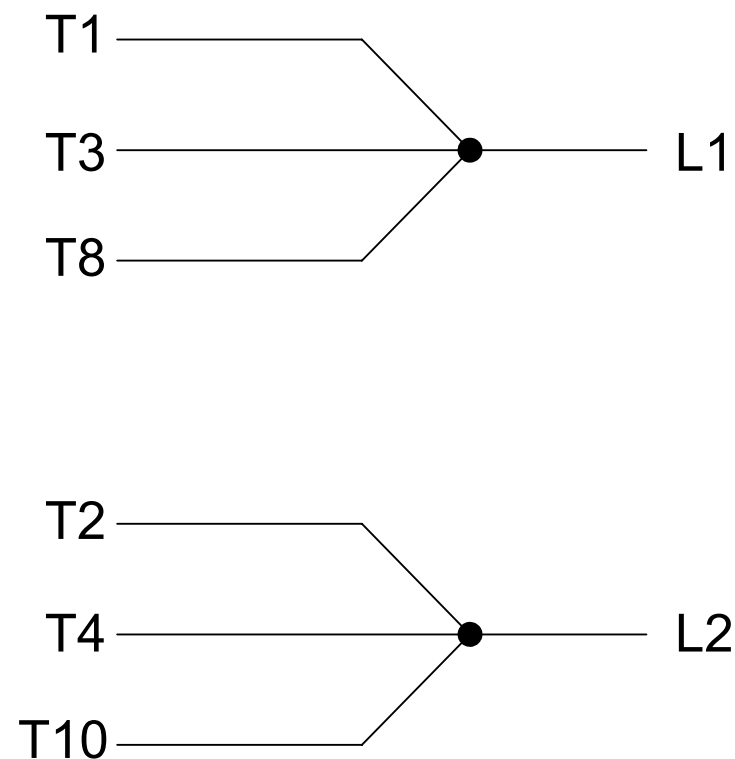
This is an uncontrolled document once printed or downloaded and is subject to change without notice. Date Created:03/15/2023



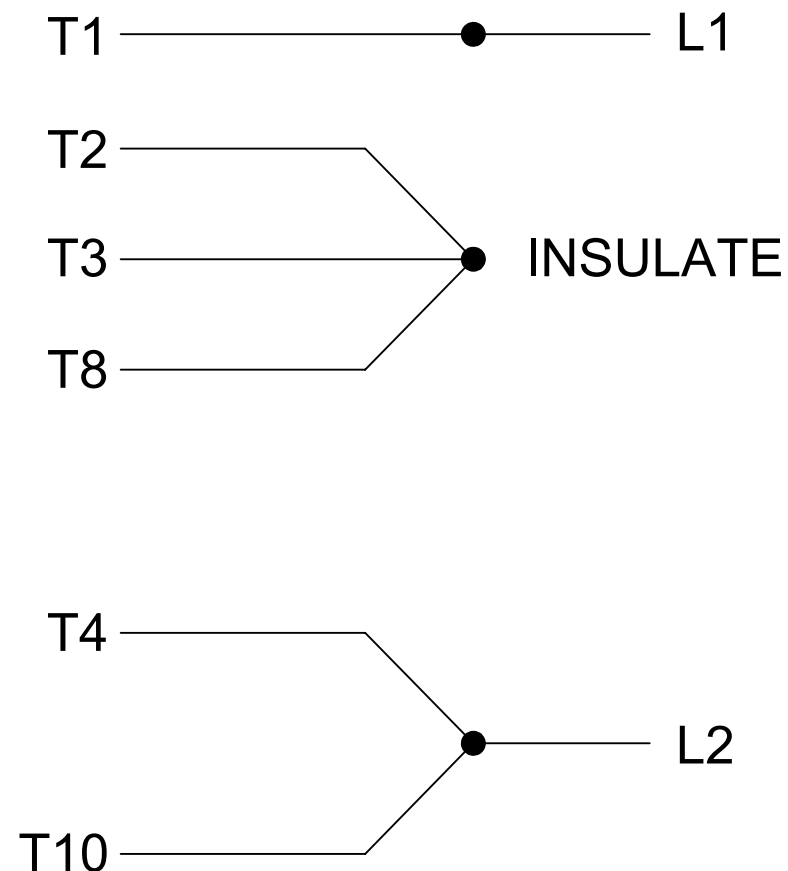
SECTION B-B

DRAWING REVISION A	REVISION BY J.RUIZ	DATE 06-08-2016	TOLERANCES UNLESS OTHERWISE SPECIFIED: DEC. INCH mm ANGLE .X ±0.1 [±2.5] .XX ±0.03 [±0.76] .XXX ±0.005 [±0.127] .XXXX ±0.0005 [±0.0127]	DRAWN BY J.RUIZ	DATE 06-08-2016	REGAL™ Regal Beloit America, Inc.
ECO ECO-0103067	APPROVED BY J.ORTREGA	DATE 06-08-2016	REMOVE BURRS & BREAK SHARP EDGES: 003/015 [076/381] X 45° CORNER FILLETS: R.02 [51] MACHINED SURFACES: 125/3.2 INCH/mm	APPROVED BY J.ORTREGA	DATE 06-08-2016	DESCRIPTION OUTLINE 56FR, DP, RIDIG, 1-PHASE
ECO DESCRIPTION NEW MODEL RELEASE			THIRD ANGLE PROJECTION	REFERENCE V101	MATERIAL	PROCESS/FINISH
<small>COPYRIGHT REGAL BELOIT AMERICA, INC. ALL RIGHTS RESERVED. PROPRIETARY AND CONFIDENTIAL INFORMATION - THIS DOCUMENT IS THE PROPERTY OF REGAL BELOIT AMERICA, INC. (OWNER) AND CONTAINS OWNER'S PROPRIETARY INFORMATION. ANY PERSON, CORPORATION OR OTHER FIRM RECEIVING IT IS DEEMED, BY RECEIVING IT, TO AGREE THAT IT, AND/OR ANY PART OF IT, SHALL NOT BE DISCLOSED TO ANY PERSON, CORPORATION OR OTHER ENTITY, DUPLICATED, AND/OR USED, EXCEPT AS EXPRESSLY APPROVED IN WRITING IN ADVANCE BY OWNER. THIS DOCUMENT SHALL BE RETURNED TO OWNER UPON REQUEST. IT MAY BE SUBJECT TO CERTAIN RESTRICTIONS UNDER APPLICABLE EXPORT CONTROL LAWS AND REGULATIONS.</small>			SIZE C	DRAWING NUMBER OL56100103-001	SHEET 1 OF 1	

### LOW VOLTAGE



### HIGH VOLTAGE



DD10039-001

## ROTATION CCW-LE TO REVERSE INTERCHANGE T8 AND T10 LEADS

PLATE: 41365

SLOT: 22

DRAWING REVISION A	REVISION BY G. RODRIGUEZ	DATE 05-18-2016	TOLERANCES UNLESS OTHERWISE SPECIFIED: DEC. INCH mm ANGLE .X ±0.1 [±2.5] ±0.5° .XX ±0.01 [±0.25] .XXX ±0.005 [±0.127] .XXXX ±0.0005 [±0.0127]	DRAWN BY G. RODRIGUEZ	<b>REGAL</b> ™ Regal Beloit America, Inc.
ECO	APPROVED BY R. VALENZUELA	DATE 05-18-2016		DATE 05-18-2016	
ECO DESCRIPTION			REMOVE BURRS & BREAK SHARP EDGES: .003/.015 [0.076/.381] X 45° CORNER FILLETS: R.02 [0.51] MACHINED SURFACES: 125/3.2 INCH/mm	APPROVED BY R. VALENZUELA	DESCRIPTION CONN DIAGRAM-NAMEPLATE
<small>COPYRIGHT REGAL BELOIT AMERICA, INC. ALL RIGHTS RESERVED. PROPRIETARY AND CONFIDENTIAL INFORMATION - THIS DOCUMENT IS THE PROPERTY OF REGAL BELOIT AMERICA, INC. ("OWNER") AND CONTAINS OWNER'S PROPRIETARY INFORMATION. ANY PERSON, CORPORATION OR OTHER FIRM RECEIVING IT IS DEEMED, BY RECEIVING IT, TO AGREE THAT IT, AND/OR ANY PART OF IT, SHALL NOT BE DISCLOSED TO ANY PERSON, CORPORATION OR OTHER ENTITY, DUPLICATED, AND/OR USED, EXCEPT AS EXPRESSLY APPROVED IN WRITING IN ADVANCE BY OWNER. THIS DOCUMENT SHALL BE RETURNED TO OWNER UPON REQUEST. IT MAY BE SUBJECT TO CERTAIN RESTRICTIONS UNDER APPLICABLE EXPORT CONTROL LAWS AND REGULATIONS.</small>			mm SHOWN IN [BRACKETS]	DATE 05-18-2016	MATERIAL
				REFERENCE	PROCESS/FINISH
				THIRD ANGLE PROJECTION	SIZE B
					DRAWING NUMBER DD10039-001
					SHEET 1 OF 1