

PRODUCT INFORMATION PACKET



Model No: ECM16CU
Catalog No: ECM16CU

VGreen® Variable Speed Motors Pool Pump Motor, 1.65 HP, 1 Ph, 60/50 Hz, 208-230 V, 3600 RPM,
56J Frame, TEFC



Regal and Century are trademarks of Regal Rexnord Corporation or one of its affiliated companies.
©2022 Regal Rexnord Corporation, All Rights Reserved. MC017097E





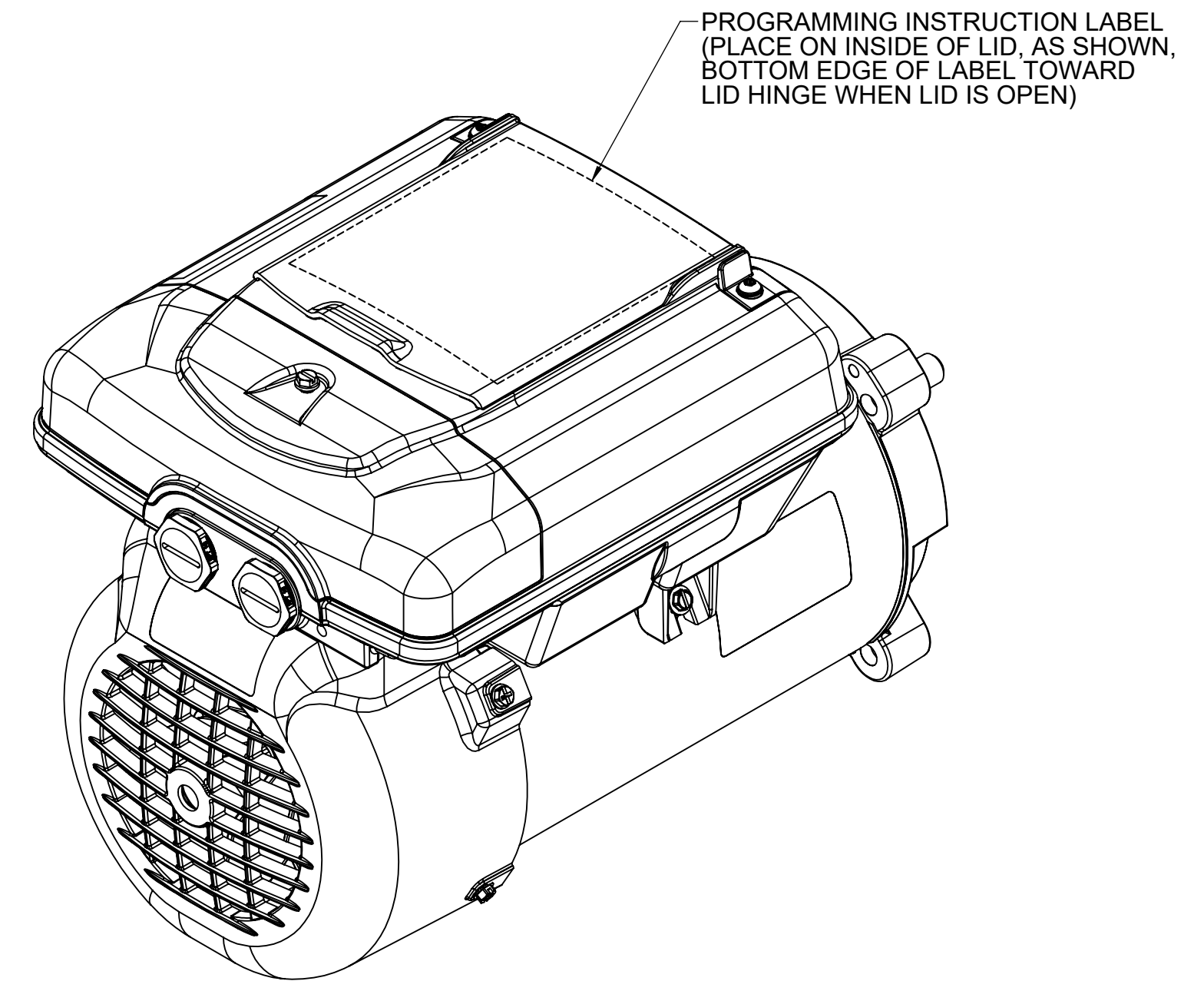
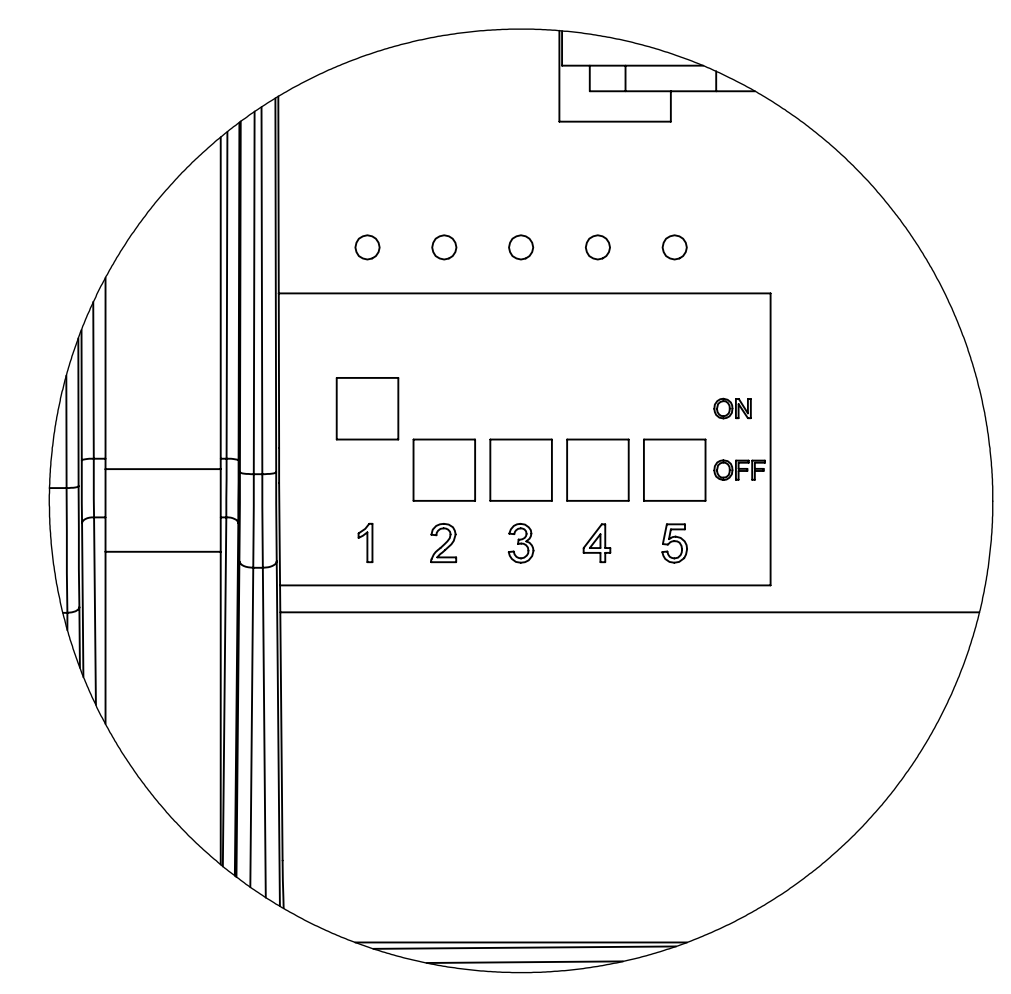
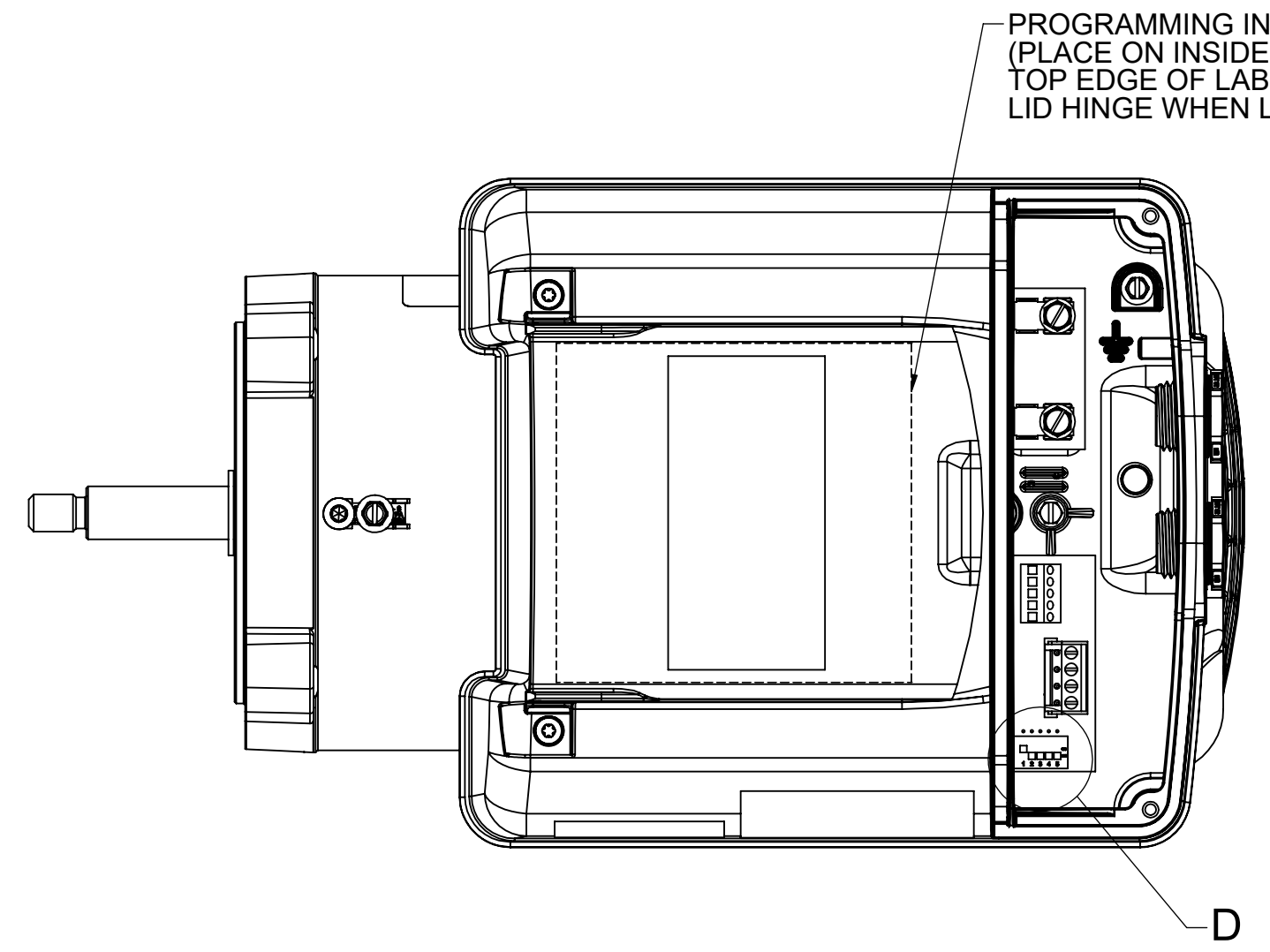
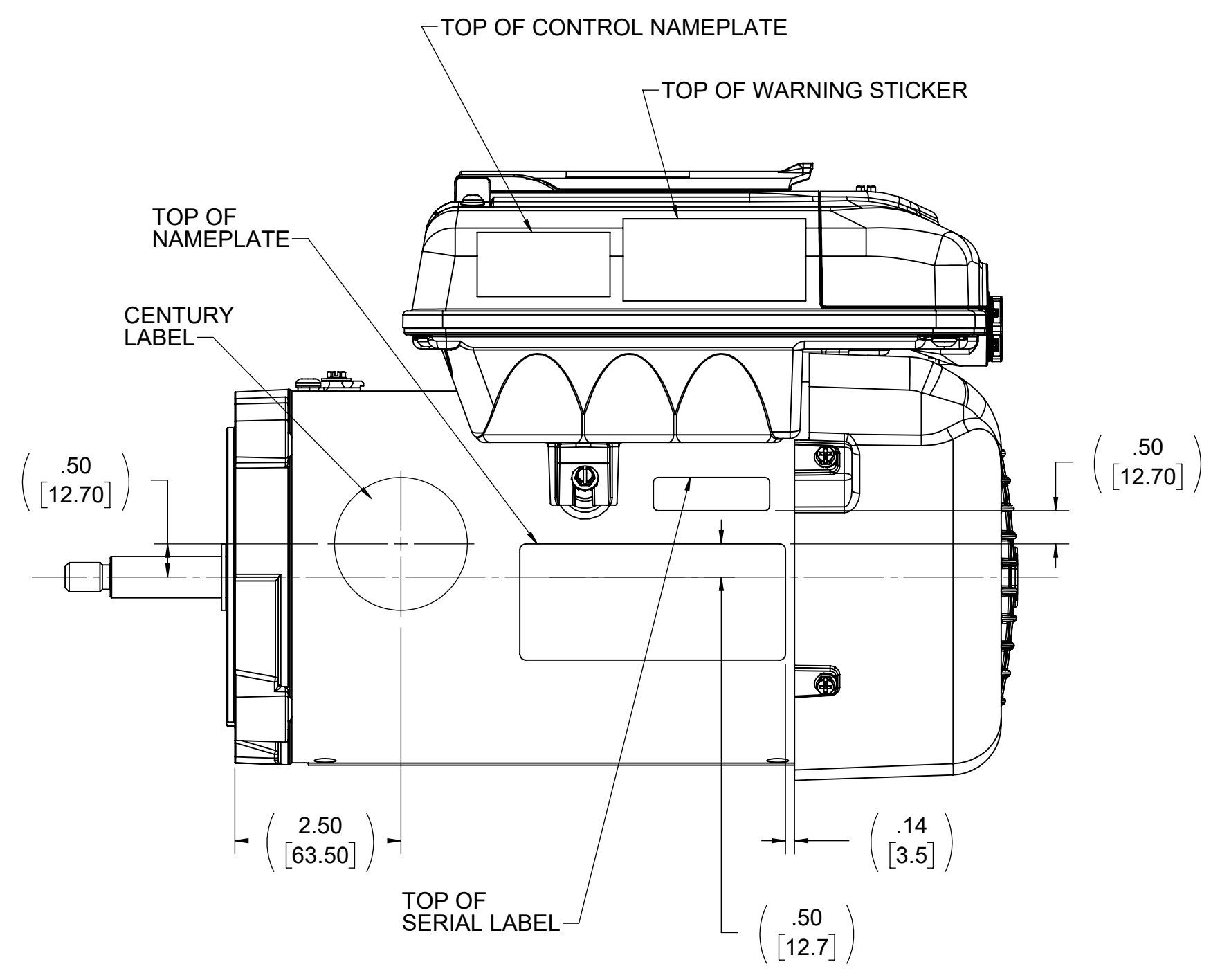
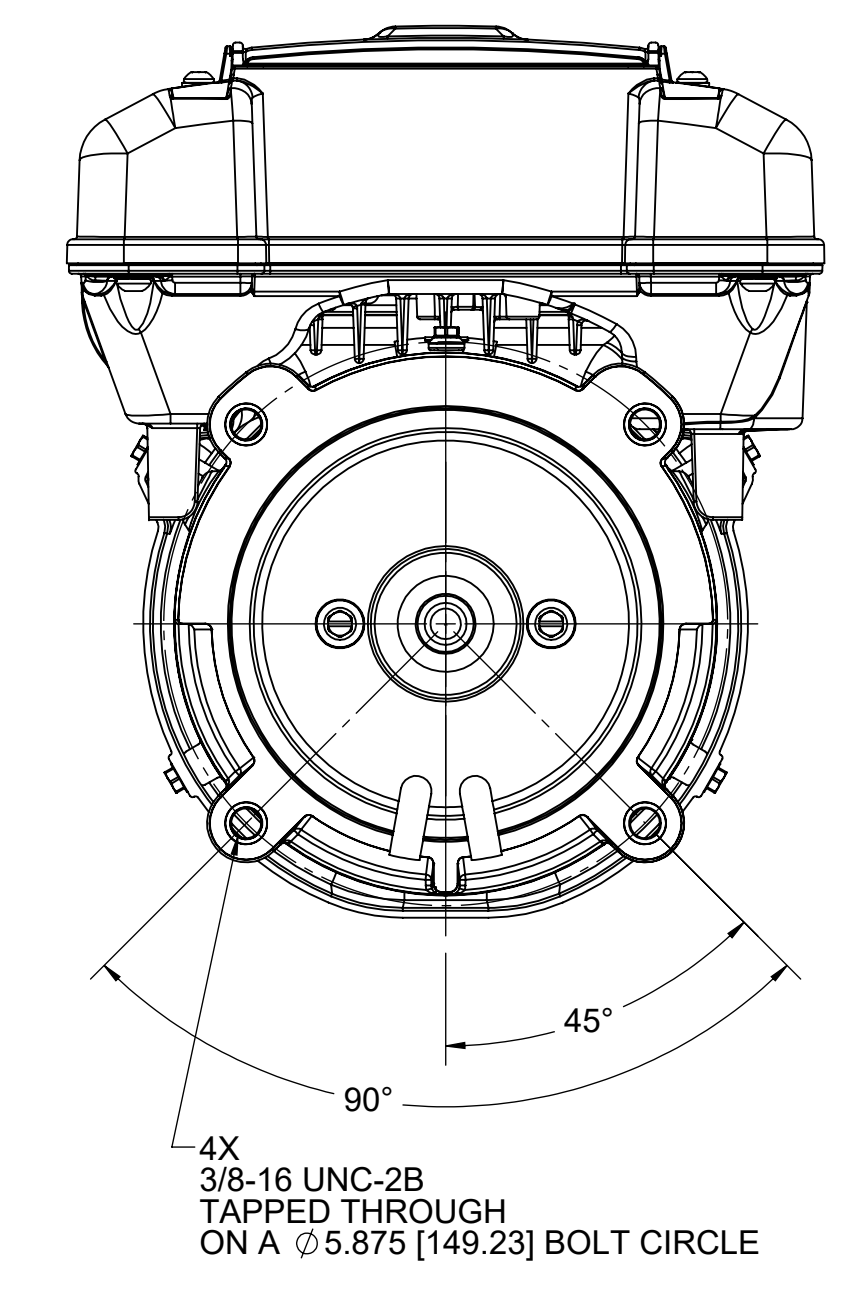
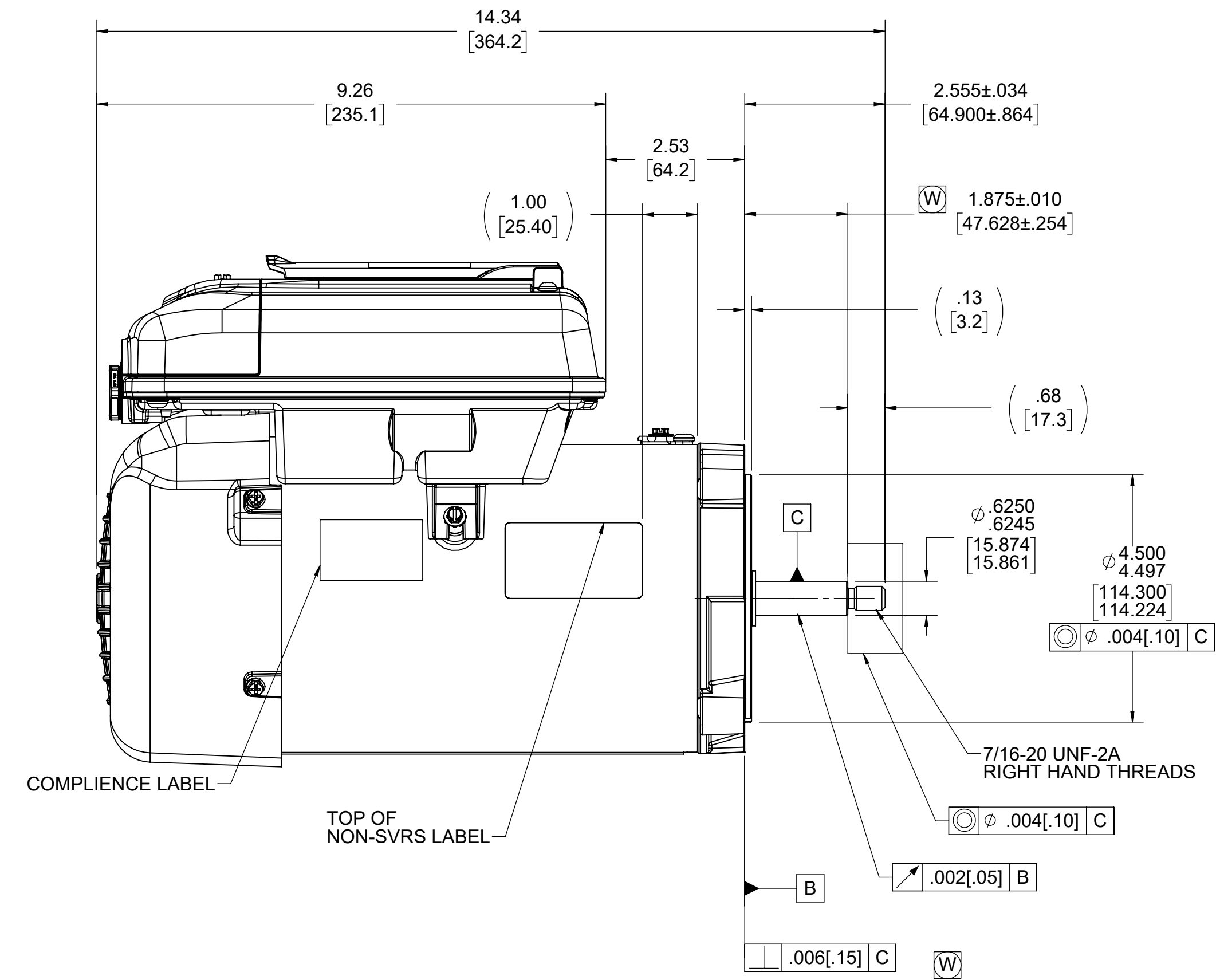
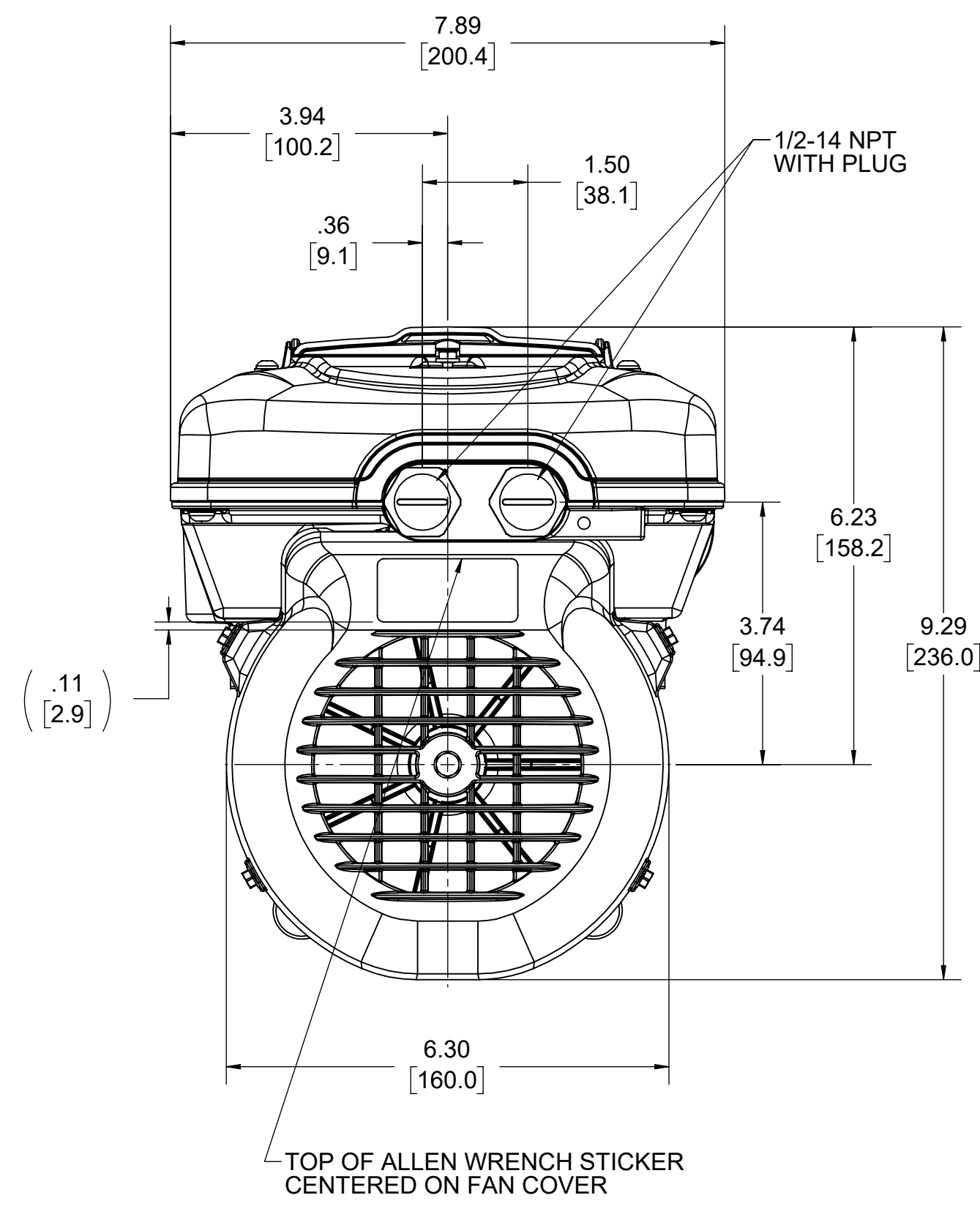
Nameplate Specifications

Output HP	1.65 Hp	Output KW	1.2 kW
Frequency	60/50 Hz	Voltage	208-230 V
Current	10.5-10.0 A	Speed	600-3450 rpm
Service Factor	1	Phase	1
Duty	Continuous	Insulation Class	F
Frame	56J	Enclosure	Totally Enclosed Fan Cooled
Thermal Protection	Automatic	Ambient Temperature	50 °C
UL	Recognized	CSA	N

Technical Specifications

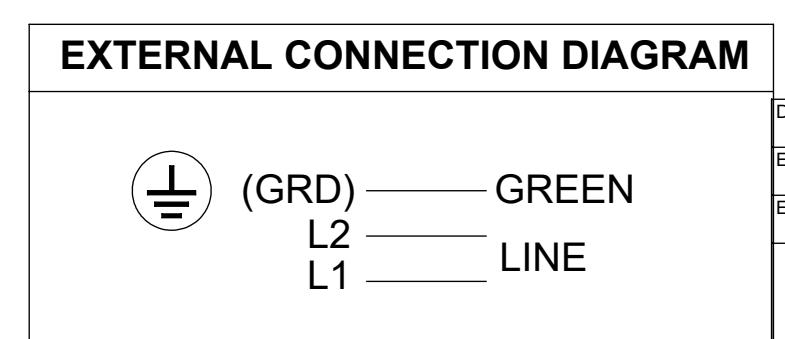
Electrical Type	Permanent Magnet Motor	Poles	2
Rotation	Clockwise Lead End	Mounting	C Face
Motor Orientation	Horizontal	Drive End Bearing	BALL
Opp Drive End Bearing	BALL	Frame Material	Rolled Steel
Shaft Type	Threaded	Overall Length	14.34 in
Frame Length	7.81 in	Shaft Diameter	0.625 in
Shaft Extension	2.55 in		
Connection Drawing	User Manual	Outline Drawing	ECM16CU

This is an uncontrolled document once printed or downloaded and is subject to change without notice. Date Created:11/29/2022



NAMEPLATE DATA			
MODEL NUMBER	M48AA85A01	CUSTOMER MODEL NUMBER	ECM16CU
HP	1.65	TYPE	M
VOLTS	208-230	FRAME SIZE	56J
AMPS	10.5-10.0	PHASE	1
KW	1.23	INSULATION CLASS	F
SF AMPS	-	AMBIENT TEMPERATURE	50 °C
HERTZ	60/50	DUTY	CONT
REVOLUTIONS PER MINUTE	600-3450	ENCLOSURE	TEFC
SERVICE FACTOR	1.00	ELECTRONICALLY PROTECTED	
ROTATION	CWLE	CODE	NA
PERFORMANCE CURVE NUMBER	-	FORM	-
CUSTOMER	DISTRIBUTION	APPROVED SAMPLE	-

- NOTES:
1. END PLAY NOT TO EXCEED .010 [25] MEASURED WITH NO THRUST
 2. ALL DIMENSIONS SHOWN IN PARENTHESES ARE REFERENCE DIMENSIONS.
 3. MOTOR AND CONTROL FINISH PAINT TO BE SATIN BLACK
 4. (W) IDENTIFIES MAJOR CHARACTERISTICS EXPECTED CAPABILITY: Cpk 1.33 OR GREATER UNLESS OTHERWISE SPECIFIED



DRAWING REVISION	M	REVISION BY	SHESHI	DATE	09/30/2021	TOLERANCES UNLESS OTHERWISE SPECIFIED:	DRAWN BY	E. DRYE
ECO		APPROVED BY	D. SURYAWANSHI	DATE	09/30/2021	DEC. INCH mm ANGLE	DATE	06-29-2012
ECO DESCRIPTION	UPDATED PER ECR-0211353					.XX ±0.02 [±0.51]	APPROVED BY	
<small> COPYRIGHT REGAL BELLOIT AMERICA, INC. ALL RIGHTS RESERVED. PROPRIETARY AND CONFIDENTIAL INFORMATION - THIS DOCUMENT IS THE PROPERTY OF REGAL BELLOIT AMERICA, INC. OWNERSHIP AND CONTENTS OWNERS PROPRIETARY INFORMATION. ANY PERSON, CORPORATION OR OTHER FIRM RECEIVING IT IS DEEMED TO AGREE TO DISCLOSE IT TO REGAL BELLOIT AMERICA, INC. AND TO NOT DISCLOSE IT TO ANY PERSON, CORPORATION OR OTHER ENTITY. DUPLICATED AND/OR USED, EXCEPT AS EXPRESSLY APPROVED IN WRITING IN ADVANCE BY OWNER. THIS DOCUMENT SHALL BE RETURNED TO OWNER UPON REQUEST. IT MAY BE SUBJECT TO CERTAIN RESTRICTIONS UNDER APPLICABLE EXPORT CONTROL LAWS AND REGULATIONS. </small>						<small> REMOVE BURRS & BREAK SHARP EDGES: .003 [0.15] [0.76 / 381] CORNER FILLETS: .02 [0.51] MACHINED SURFACES: 125 / 32 INCH / mm mm SHOWN IN [BRACKETS] </small>	<small> REFERENCE: THIRD ANGLE PROJECTION </small>	<small> MATERIAL: N/A PROCESS/FINISH: N/A </small>
<small> REGAL™ Regal Beloit America, Inc. </small>								<small> DESCRIPTION: OUTLINE MODEL-PFHP-56FR-ECM </small>
<small> SIZE: D DRAWING NUMBER: ECM16CU </small>								<small> SHEET: 1 OF 1 </small>