

# PRODUCT INFORMATION PACKET



Model No: DLR1026

Catalog No: DLR1026

Fan and Blower Motor, 1/4 HP, 1 Ph, 60 Hz, 115 V, 1075 RPM, 3 Speed, 48 Frame, OPEN



Regal and Century are trademarks of Regal Rexnord Corporation or one of its affiliated companies.  
©2022 Regal Rexnord Corporation, All Rights Reserved. MC017097E





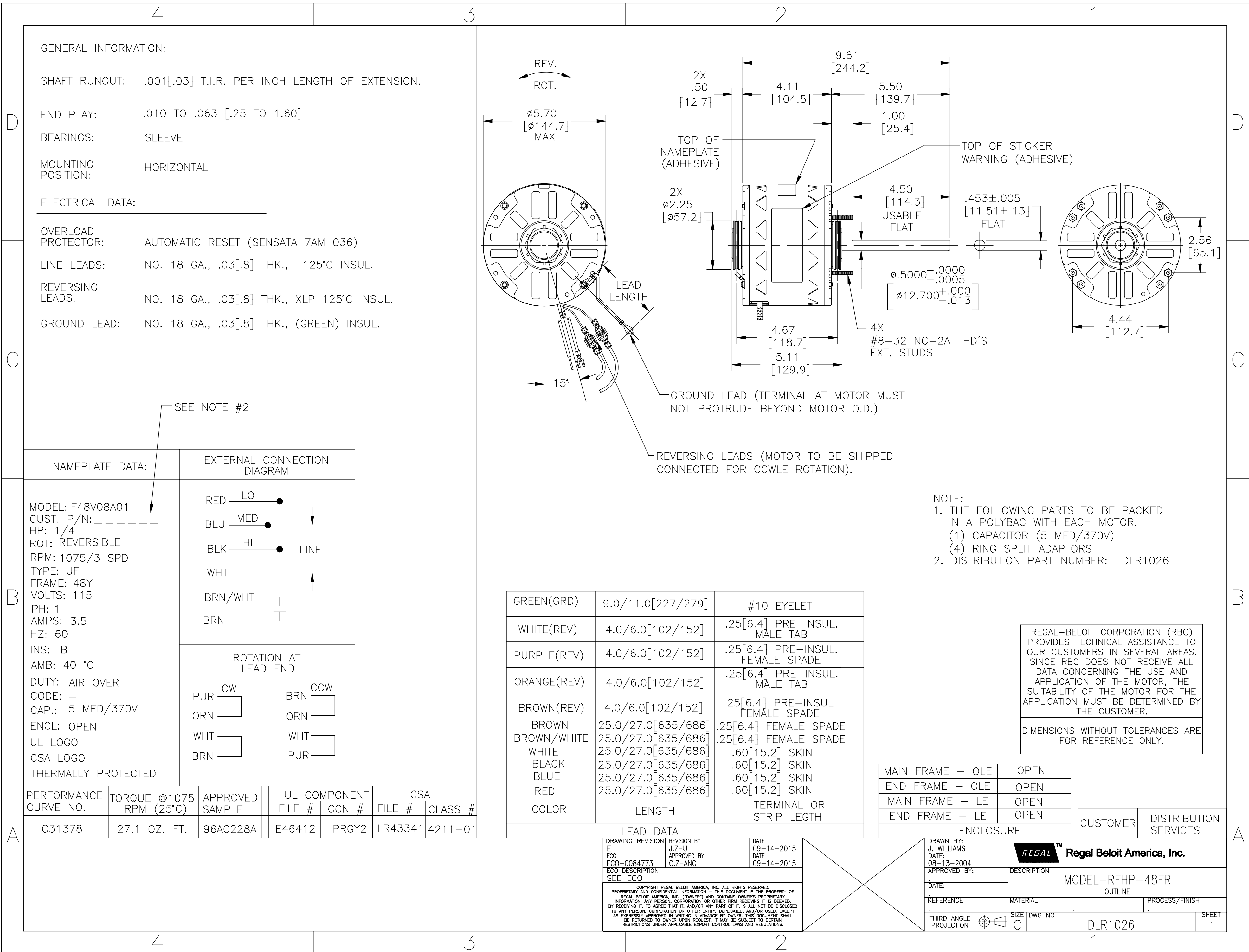
**Nameplate Specifications**

Output HP	1/4 Hp	Output KW	0.19 kW
Frequency	60 Hz	Voltage	115 V
Current	3.5 A	Speed	1075 rpm
Service Factor	1	Phase	1
Duty	Air Over	Insulation Class	B
Frame	48Y	Enclosure	Open Enclosed
Thermal Protection	Automatic	Ambient Temperature	40 °C
UL	Recognized	CSA	Y
CE	N	Number of Speeds	3

**Technical Specifications**

Electrical Type	Permanent Split Capacitor	Starting Method	Across The Line
Poles	6	Rotation	Reversible
Mounting	Resilient Rings	Motor Orientation	Horizontal
Drive End Bearing	Sleeve	Opp Drive End Bearing	Sleeve
Frame Material	Rolled Steel	Shaft Type	Flat
Overall Length	10.11 in	Frame Length	3.50 in
Shaft Diameter	0.500 in	Shaft Extension	5.5 in
Outline Drawing	DLR1026-S01		

This is an uncontrolled document once printed or downloaded and is subject to change without notice. Date Created:11/28/2022



GENERAL INFORMATION:

SHAFT RUNOUT: .001[.03] T.I.R. PER INCH LENGTH OF EXTENSION.

END PLAY: .010 TO .063 [.25 TO 1.60]

BEARINGS: SLEEVE

MOUNTING POSITION: HORIZONTAL

ELECTRICAL DATA:

OVERLOAD PROTECTOR: AUTOMATIC RESET (SENSATA 7AM 036)

LINE LEADS: NO. 18 GA., .03[.8] THK., 125°C INSUL.

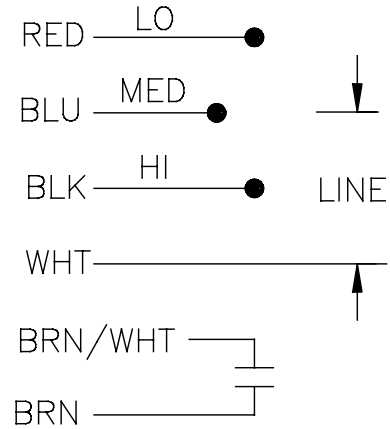
REVERSING LEADS: NO. 18 GA., .03[.8] THK., XLP 125°C INSUL.

GROUND LEAD: NO. 18 GA., .03[.8] THK., (GREEN) INSUL.

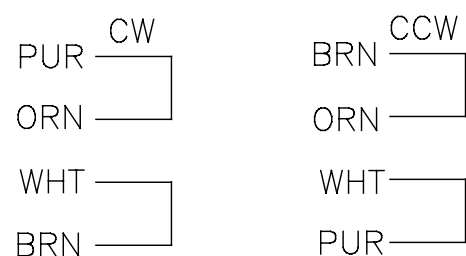
NAMEPLATE DATA:

MODEL: F48V08A01  
 CUST. P/N: [ ]  
 HP: 1/4  
 ROT: REVERSIBLE  
 RPM: 1075/3 SPD  
 TYPE: UF  
 FRAME: 48Y  
 VOLTS: 115  
 PH: 1  
 AMPS: 3.5  
 HZ: 60  
 INS: B  
 AMB: 40 °C  
 DUTY: AIR OVER  
 CODE: -  
 CAP.: 5 MFD/370V  
 ENCL: OPEN  
 UL LOGO  
 CSA LOGO  
 THERMALLY PROTECTED

EXTERNAL CONNECTION DIAGRAM



ROTATION AT LEAD END



- NOTE:
- THE FOLLOWING PARTS TO BE PACKED IN A POLYBAG WITH EACH MOTOR.
    - (1) CAPACITOR (5 MFD/370V)
    - (4) RING SPLIT ADAPTORS
  - DISTRIBUTION PART NUMBER: DLR1026

GREEN(GRD)	9.0/11.0[227/279]	#10 EYELET
WHITE(REV)	4.0/6.0[102/152]	.25[6.4] PRE-INSUL. MALE TAB
PURPLE(REV)	4.0/6.0[102/152]	.25[6.4] PRE-INSUL. FEMALE SPADE
ORANGE(REV)	4.0/6.0[102/152]	.25[6.4] PRE-INSUL. MALE TAB
BROWN(REV)	4.0/6.0[102/152]	.25[6.4] PRE-INSUL. FEMALE SPADE
BROWN	25.0/27.0[635/686]	.25[6.4] FEMALE SPADE
BROWN/WHITE	25.0/27.0[635/686]	.25[6.4] FEMALE SPADE
WHITE	25.0/27.0[635/686]	.60[15.2] SKIN
BLACK	25.0/27.0[635/686]	.60[15.2] SKIN
BLUE	25.0/27.0[635/686]	.60[15.2] SKIN
RED	25.0/27.0[635/686]	.60[15.2] SKIN
COLOR	LENGTH	TERMINAL OR STRIP LEGTH

LEAD DATA

DRAWING REVISION	REVISION BY	DATE
E	J.ZHU	09-14-2015
ECO	APPROVED BY	DATE
ECO-0084773	C.ZHANG	09-14-2015
ECO DESCRIPTION		
SEE ECO		

COPYRIGHT REGAL BELOIT AMERICA, INC. ALL RIGHTS RESERVED. PROPRIETARY AND CONFIDENTIAL INFORMATION - THIS DOCUMENT IS THE PROPERTY OF REGAL BELOIT AMERICA, INC. (OWNER) AND CONTAINS OWNER'S PROPRIETARY INFORMATION. ANY PERSON, CORPORATION OR OTHER FIRM RECEIVING IT IS DEEMED, BY RECEIVING IT, TO AGREE THAT IT, AND/OR ANY PART OF IT, SHALL NOT BE DISCLOSED TO ANY PERSON, CORPORATION OR OTHER ENTITY, DUPLICATED, AND/OR USED, EXCEPT AS EXPRESSLY APPROVED IN WRITING IN ADVANCE BY OWNER. THIS DOCUMENT SHALL BE RETURNED TO OWNER UPON REQUEST. IT MAY BE SUBJECT TO CERTAIN RESTRICTIONS UNDER APPLICABLE EXPORT CONTROL LAWS AND REGULATIONS.

MAIN FRAME - OLE	OPEN
END FRAME - OLE	OPEN
MAIN FRAME - LE	OPEN
END FRAME - LE	OPEN

REGAL-BELOIT CORPORATION (RBC) PROVIDES TECHNICAL ASSISTANCE TO OUR CUSTOMERS IN SEVERAL AREAS. SINCE RBC DOES NOT RECEIVE ALL DATA CONCERNING THE USE AND APPLICATION OF THE MOTOR, THE SUITABILITY OF THE MOTOR FOR THE APPLICATION MUST BE DETERMINED BY THE CUSTOMER.

DIMENSIONS WITHOUT TOLERANCES ARE FOR REFERENCE ONLY.

ENCLOSURE		CUSTOMER	DISTRIBUTION SERVICES
DRAWN BY:	J. WILLIAMS	REGAL™ Regal Beloit America, Inc.	
DATE:	08-13-2004		
APPROVED BY:		DESCRIPTION	
DATE:		MODEL-RFHP-48FR	
REFERENCE		MATERIAL	PROCESS/FINISH
THIRD ANGLE PROJECTION		SIZE DWG NO	SHEET
		C	DLR1026 1

PERFORMANCE CURVE NO.	TORQUE @1075 RPM (25°C)	APPROVED SAMPLE	UL COMPONENT	CSA
C31378	27.1 OZ. FT.	96AC228A	E46412 PRGY2	LR43341 4211-01