

PRODUCT INFORMATION PACKET



Model No: Q3202

Catalog No: Q3202

Pool Pump Motor, 2 HP, 3 Ph, 60 Hz, 208-230/460 V, 3600 RPM, 48Y Frame, ODP



Regal and Century are trademarks of Regal Rexnord Corporation or one of its affiliated companies.
©2022 Regal Rexnord Corporation, All Rights Reserved. MC017097E





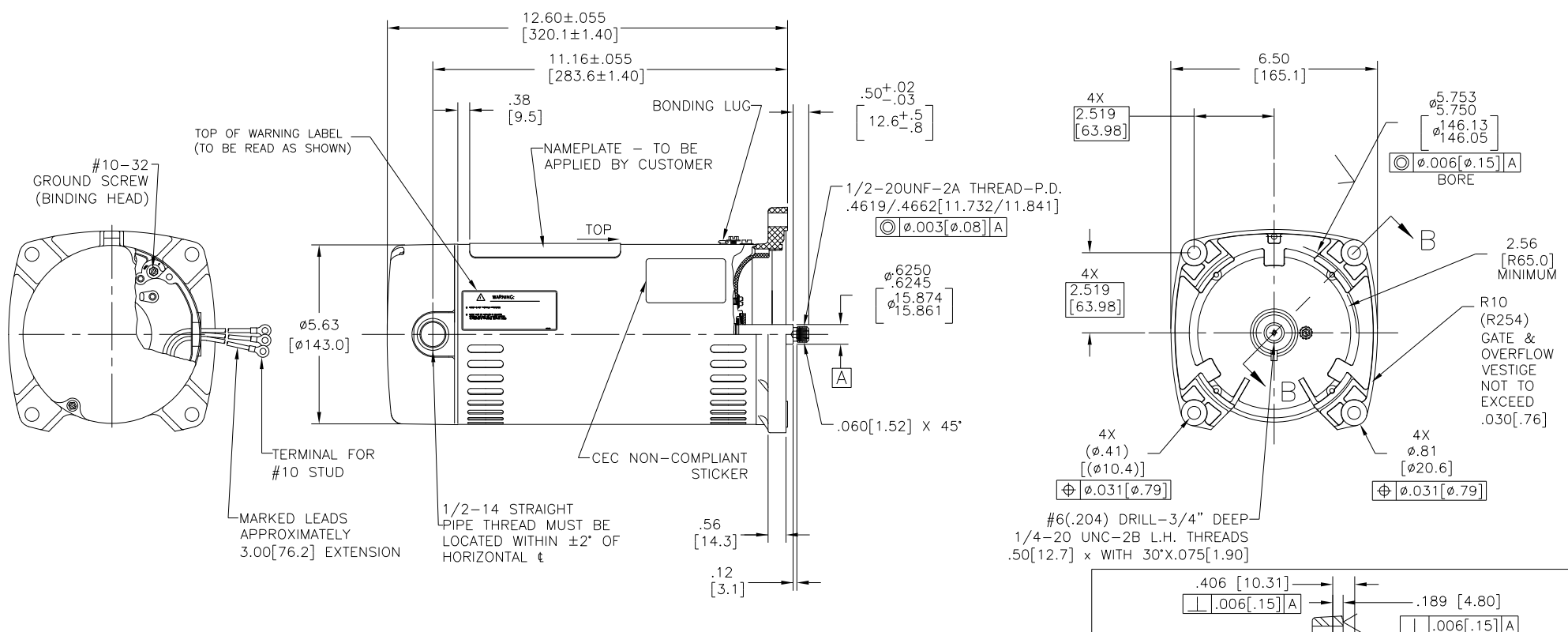
Nameplate Specifications

Output HP	2 Hp	Output KW	1.5 kW
Frequency	60 Hz	Voltage	208-230/460 V
Current	8.5/4.25 A	Speed	3450 rpm
Service Factor	1.3	Phase	3
Duty	Continuous	Insulation Class	B
Frame	48Y	Enclosure	Open Drip Proof
Thermal Protection	No Protection	Ambient Temperature	50 °C
UL	No	CSA	Y
Number of Speeds	1		

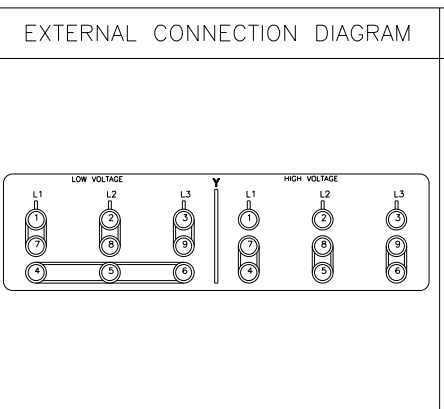
Technical Specifications

Electrical Type	Polyphase	Starting Method	Across The Line
Poles	2	Rotation	Counterclockwise Pump End
Mounting	Round	Motor Orientation	Horizontal
Drive End Bearing	Ball	Opp Drive End Bearing	Ball
Frame Material	Rolled Steel	Shaft Type	1/2 Thread
Overall Length	13.32 in	Frame Length	9.44 in
Shaft Diameter	0.625 in	Shaft Extension	0.906 in
Connection Drawing	614621-002	Outline Drawing	Q3202

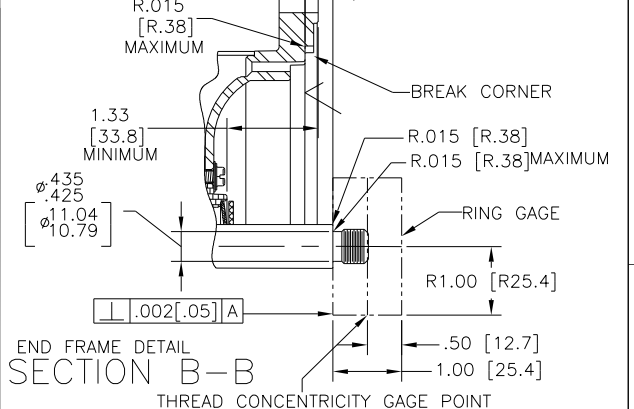
This is an uncontrolled document once printed or downloaded and is subject to change without notice. Date Created:11/28/2022



NAMEPLATE DATA	
MODEL: P48N2EB7A1	CUST PN: Q3202
HP: 2.0	SF: 1.3
ROT: CCWPE	
RPM: 3450	
TYPE: P	CODE: N
FORM:	FRAME: 48Y
VOLTS: 208-230/460	
AMPS:	
MAX AMPS: 8.5/4.25	
SF AMPS: -	
PH: 3	HZ: 60
INS: B	AMB: 50°C
DUTY: CONT	
ENCLOSURE: ODP	
THERMALLY PROTECTED: NONE	



- | NOTES |
|---|
| 1. FINISH PAINT TO BE BLACK LACQUER. |
| 2. 7/16 WRENCH FLATS ON SHAFT - FOR ACCESS TO THIS WRENCH FLAT REMOVE END COVER |
| 3. STAINLESS STEEL SHAFT EXT. |
| 4. LIMITS ON AMPLITUDE OF VIBRATION MEASURED AT BEARING HOUSING = .001 [Ø.03]. |
| 5. CTQ REQUIREMENT SEE EP000105-008. |
| 6. RoHS & REACH REQUIREMENT SEE EP000014. |



PERFORMANCE CURVE	APPROVED SAMPLE		
P48N2W1			
UL COMPONENT	CSA		
FILE#	CCN#	FILE#	GUIDE#
E46412	PRGY2	LR43341	4211-01
CUSTOMER	DISTRIBUTION SERVICES		

CRITICAL TO QUALITY CHARACTERISTICS (CTQs)	DRAWING REVISION	REVISION BY	DATE	TOLERANCES UNLESS OTHERWISE SPECIFIED	DRAWN BY:
(P) PROCESS	ECO	HAIXIA ZHANG	04-18-2022	DEC. INCH mm ANGLE	JLG
(E) ENGINEERING	ECR-0216845	TRISTIA ZHAO	04-18-2022	.X ±0.1 [±3]	DATE: 05-12-2009
(A) APPLICATION	SEE ECR			.XX ±0.02 [±0.5]	APPROVED BY:
(R) REGULATORY				.XXX ±0.005 [±0.13]	DATE:
(L) LIFE				.XXXX ±0.0005 [±0.013]	REFERENCE
				REMOVE BURRS & BREAK SHARP EDGES .003/.015 [Ø.08.38]	MATERIAL
				CORNER FILLETS .02 [5]	PROCESS/FINISH
				MACHINED SURFACES 125 mm 3/2	SIZE DWG NO
				mm SHOWN IN [BRACKETS]	C 03202
					SHEET 1

REGAL™	Regal Beloit America, Inc.
DESCRIPTION: MODEL-PFHP-48FR OUTLINE	
THIRD ANGLE PROJECTION	SIZE DWG NO: C 03202
	SHEET 1

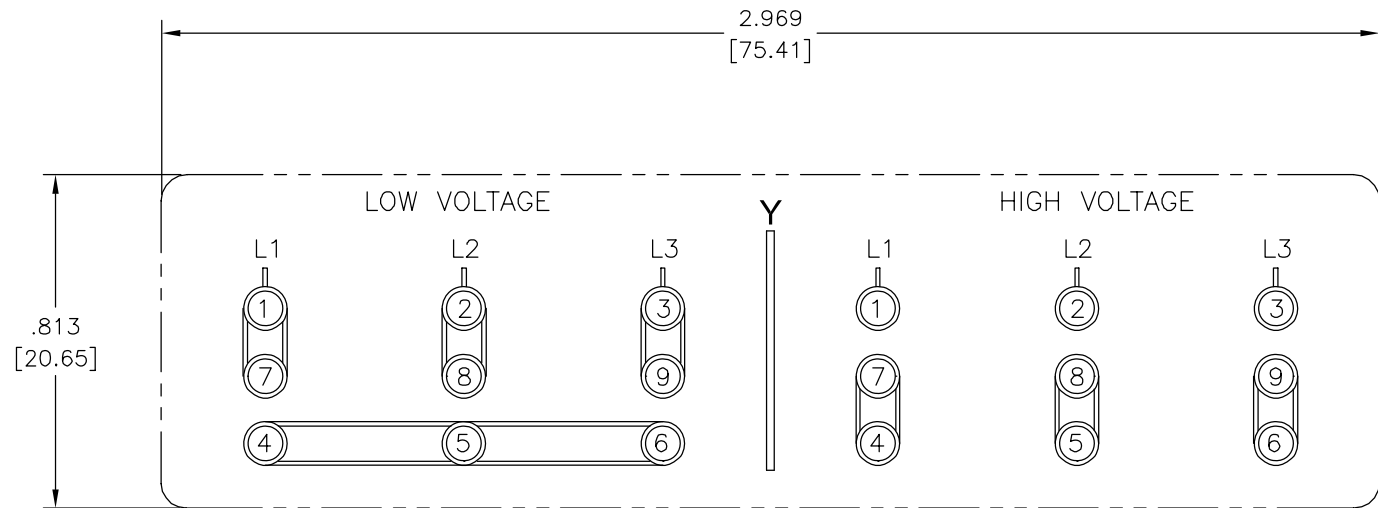
4

3

2

1

REV	ECO	REV BY	DATE	APPD	DATE
B	0025817	Caddie	05-07-2012	Jevon	05-07-2012



NOTES:

1. FOR USE WITH 614620 NAMEPLATE BLANK
2. DIE MUST PRODUCE A LEGIBLE IMPRESSION
3. _____ INDICATES DIMENSIONAL LIMITS. NO BOUNDARY LINES.

GEOMETRIC CHARACTERISTICS & SYMBOLS	
▭	FLATNESS
—	STRAIGHTNESS
∠	ANGULARITY
⊥	PERPENDICULARITY (SQUARENESS)
//	PARALLELISM
○	ROUNDNESS (CIRCULARITY)
⊘	CYLINDRICITY
△	PROFILE OF ANY SURFACE
∩	PROFILE OF ANY LINE
↑	RUNOUT
⊕	TRUE POSITION
◎	CONCENTRICITY
≡	SYMMETRY
ASME Y14.5M 1994	

UNLESS OTHERWISE SPECIFIED DIM. TOLERANCES ARE AS FOLLOWS:	
INCH	±.1 ±.02 ±.005 ±.0005
mm	±0.5 ±0.13 ±0.013
ANG. ±.50 DEG	
REMOVE BURRS & BREAK SHARP EDGES:	
INCH	.003-.015
mm	0.1-0.4
CORNER FILLETS TO:	
INCH	.020
mm	0.5
MACHINE SURFACES:	
INCH	125
mm	3.2
METRIC DIMS. SHOWN IN [BRACKETS]	

DR BY:	G.GOLDY	03-08-2002
APPD:		
THIRD ANGLE PROJECTION		EDS DATE 11-11-2011 FORMAT REV G
CONFIDENTIAL: THIS DRAWING AND ITS INFORMATION ARE THE EXCLUSIVE AND CONFIDENTIAL PROPERTY OF REGAL-BELOIT CORPORATION AND ARE NOT TO BE DISCLOSED, DUPLICATED, DISTRIBUTED OR OTHERWISE USED WITHOUT THE WRITTEN CONSENT OF REGAL-BELOIT CORPORATION. -ALL RIGHTS RESERVED.		

DESCRIPTION CONNECTION DIAGRAM-EXTERNAL	
SIZE C	DWG NO 614621-002
SCALE NONE	SHEET 1

4

3

2

1

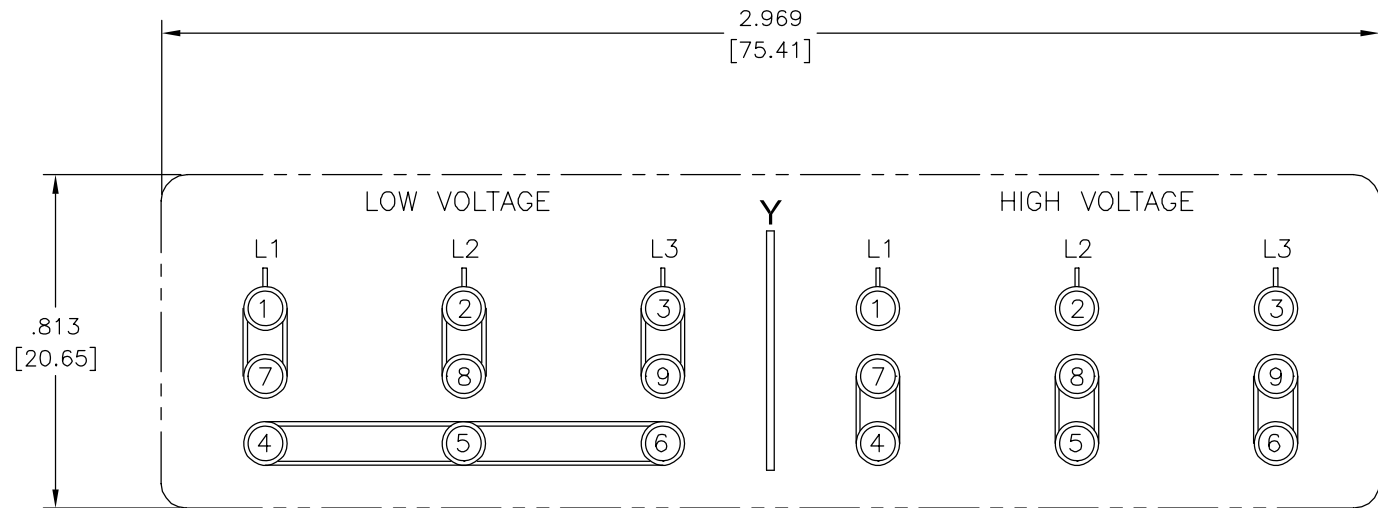
4

3

2

1

REVISION:	ECO	REVISADO POR:	FECHA:	APROBADO POR:	FECHA:
B	0025817	Caddie	05-07-2012	Jevon	05-07-2012



CARACTERISTICAS DE GEOMETRIA Y SIMBOLOS

- ▭ PLANICIDAD
- RECTITUD
- ∠ ANGULARIDAD
- ⊥ PERPENDICULARIDAD (A ESCUADRA)
- // PARALELISMO
- REDONDEZ (CIRCULARIDAD)
- ⊘ CILINDRICIDAD
- △ PERFIL DE CUALQUIER SUPERFICIE
- ∧ PERFIL DE CUALQUIER LINEA
- ↑ VARIACION
- ⊕ POSICION REAL
- ⊙ CONCENTRICIDAD
- = SIMETRIA

A MENOS QUE SE ESPECIFIQUE DE OTRA MANERA, LAS TOLERANCIAS DE LAS DIMS; SON LAS SIGUIENTES:

	X	XX	XXX	XXXX
PULG	±.1	±.02	±.005	±.0005
mm	±0.5	±0.13	±0.013	

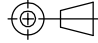
ANG. ± 50 GRADOS
ELIMINAR REBABAS Y ORILLAS FILOSAS DEL BORDE.


	PULG	.003-.015	mm	0.1-0.4
--	------	-----------	----	---------

FILETEAR ESQUINA: PULG .020 mm 0.5
MAQUINAR SUPERFICIES
PULG 125 mm .32

DIMS METRICAS MOSTRADAS [PARENTESIS]

ASME Y14.5M 1994

DIBUJADO POR: G.GOLDY	03-08-2002
APROBADO POR:	
TERCER ANGULO DE PROYECCION	
FECHA EDS: 11-11-2011	REV. FORMATO: G
CONFIDENCIAL: ESTE DIBUJO Y SU INFORMACION SON PROPIEDAD DE USO EXCLUSIVO Y CONFIDENCIAL DE REGAL-BELOIT CORPORATION. Y NO DEBERAN SER REVELADOS, DUPLICADOS, DISTRIBUIDOS O USARSE DE OTRA MANERA SIN EL CONSENTIMIENTO ESCRITO DE REGAL-BELOIT CORPORATION. -TODOS LOS DERECHOS RESERVADOS.	

	
DESCRIPCION: CONNECTION DIAGRAM-EXTERNAL	
TAMAÑO: C	NUMERO DE DIBUJO: 614621-002
ESCALA: NONE	HOJA: 1

4

3

2

1

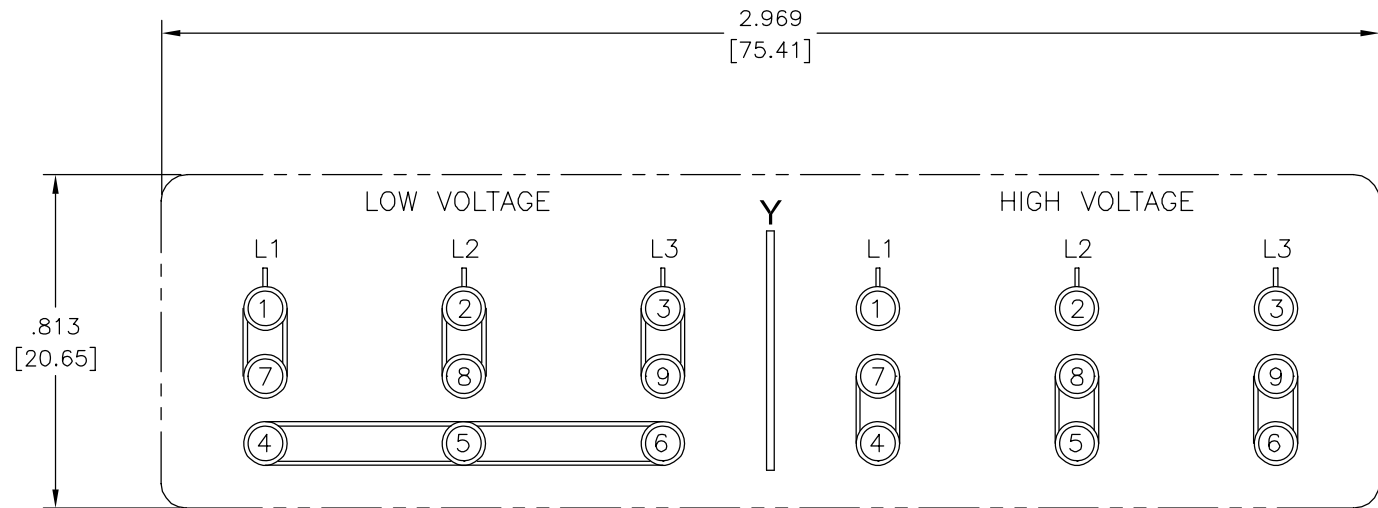
4

3

2

1

版本	ECO	编制	日期	批准	日期
B	0025817	Caddie	05-07-2012	Jevon	05-07-2012



形位公差 □ 平面度 — 直线度 ∠ 倾斜度 ⊥ 垂直度 ∥ 平行度 ○ 圆度 ⊘ 圆柱度 △ 面轮廓度 ⌒ 线轮廓度 ⤴ 圆跳动 ⊕ 位置度 ⊗ 同轴度 ≡ 对称度	除另有注明 尺寸公差如下: 英寸 X XX XXX XXXX 毫米 ±.1 ±.02 ±.005 ±.0005 角度 ±.50 度 清理毛刺和尖棱 英寸 .003-.015 毫米 0.1-0.4 内圆角 英寸 .020 毫米 0.5 表面粗糙度 英制 125 米制 3.2
--	--

ASME Y14.5M 1994

米制尺寸显示在 []

绘图: G.GOLDY	03-08-2002
批准:	
第三角投影	
机密: 本图纸及相关信息所有权归REGAL-BELOIT CORPORATION 未经REGAL-BELOIT CORPORATION书面授权, 不得泄露、 复制、传播或作其他用途。—版权所有	

名称 CONNECTION DIAGRAM-EXTERNAL	
图幅 C	图号 614621-002
比例 NONE	页号 1

4

3

2

1