

# PRODUCT INFORMATION PACKET



Model No: OWW4517

Catalog No: OWW4517

OEM Replacement Motor, 1/3 HP, 1 Ph, 60/50 Hz, 208-230 V, 1625 RPM, 1 Speed, 42 Frame, OAO



Regal and Century are trademarks of Regal Rexnord Corporation or one of its affiliated companies.  
©2022 Regal Rexnord Corporation, All Rights Reserved. MC017097E





### Nameplate Specifications

Output HP	1/3 Hp	Output KW	0.25 kW
Frequency	50 Hz	Voltage	208-230 V
Current	2.3 A	Speed	1625 rpm
Service Factor	1	Phase	1
Duty	Air Over	Insulation Class	A
Frame	42Y	Enclosure	Open Air Over
Thermal Protection	Automatic	Ambient Temperature	40 °C
UL	Recognized	CSA	Y
CE	N	Number of Speeds	1

### Technical Specifications

Electrical Type	Permanent Split Capacitor	Starting Method	Across The Line
Poles	4	Rotation	Counterclockwise Lead End
Mounting	Resilient Base	Motor Orientation	Horizontal
Drive End Bearing	Sleeve	Opp Drive End Bearing	Sleeve
Frame Material	Na	Shaft Type	Flat
Overall Length	18.50 in	Shaft Diameter	0.500 in
Shaft Extension	7.2 X.5 X7.2 in		
Outline Drawing	11927-048	Connection Drawing	2494A79F01

This is an uncontrolled document once printed or downloaded and is subject to change without notice. Date Created:11/28/2022

4

3

2

1

GENERAL INFORMATION:

SHAFT RUNOUT: .001[.03] T.I.R. PER INCH LENGTH OF EXTENSION

END PLAY: .010[.25] TO .063[1.60]

BEARINGS: SLEEVE

MOUNTING POSITION: HORIZONTAL

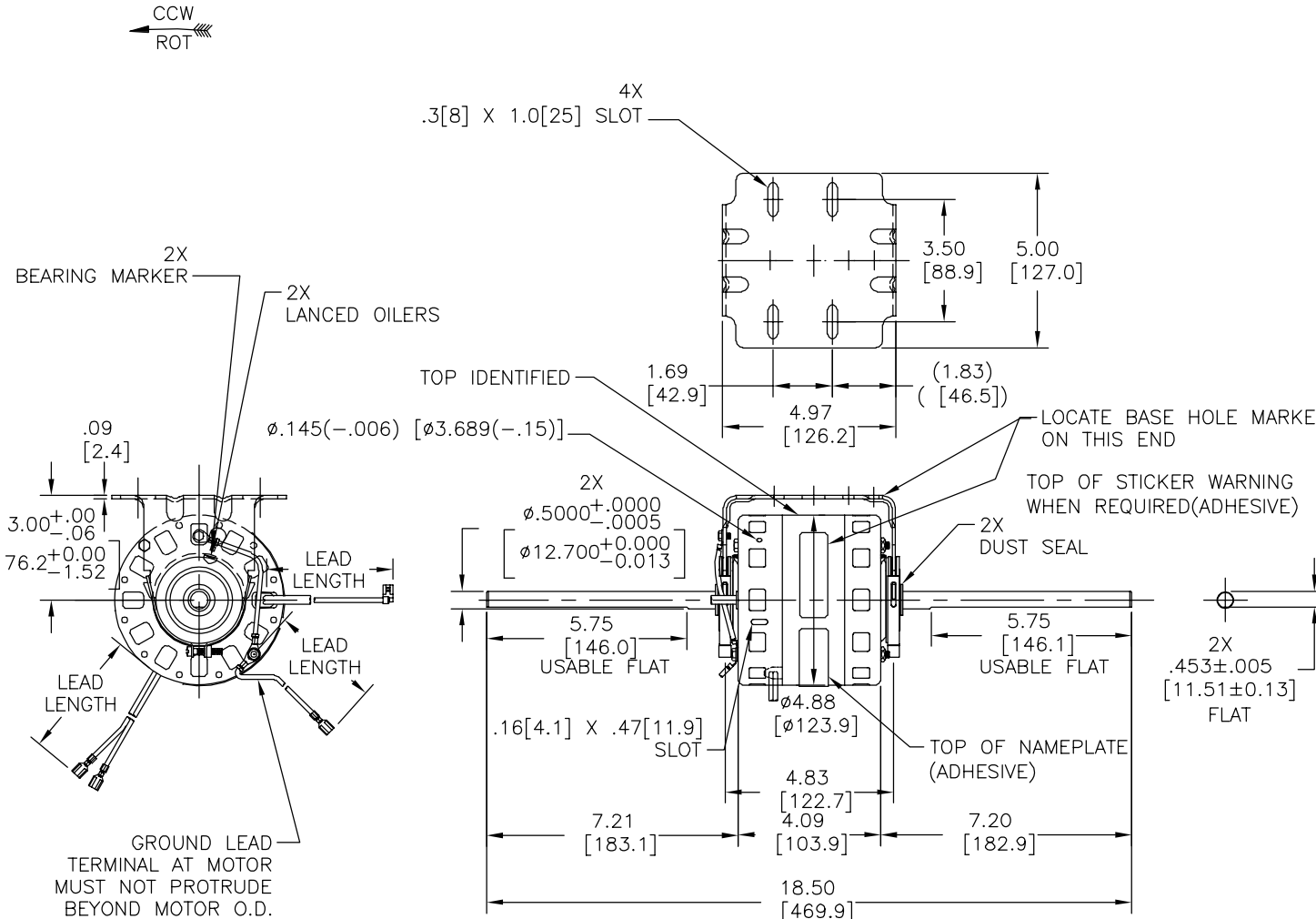
ELECTRICAL DATA:

OVERLOAD PROTECTOR: AUTOMATIC RESET (T.I. 7AM 034)

LEADS: NO. 18 GA., .06[1.5] THK., 125°C INSULATION

GROUND LEAD: NO. 18 GA., .03[.8] THK., GREEN INSULATION

REV	ECO	REV BY	DATE	APPD	DATE
E	0026394	H.ZHOU	05-29-2012	B.SHEN	05-29-2012



GREEN (GRD)	5.0/6.0 [127/152]	.25[6.4] FEMALE SPADE
GREEN (GRD)	CONNECTED TO BASE	#8 EYELET
BROWN	4.5/6.5 [114/165]	.25[6.4] FLAG
BROWN	4.5/6.5 [114/165]	.25[6.4] FLAG
2 CONDUIT RIPCORD	31.0/34.0 [787/864]	.25[6.4] FEMALE SPADE
2 CONDUIT RIPCORD	31.0/34.0 [787/864]	.25[6.4] FEMALE SPADE
COLOR	LENGTH	TERMINAL OR STRIP LENGTH

MAIN FRAME - OLE	OPEN
END FRAME - OLE	OPEN
MAIN FRAME - LE	OPEN
END FRAME - LE	OPEN

CUSTOMER	DISTRIBUTION SERVICE
----------	----------------------

NAMEPLATE DATA:	EXTERNAL CONNECTION DIAGRAM
MODEL NO.: 322P756 CUST. P/N: OWW4517 HP: 1/3 ROT.: CCWLE RPM: 1625 TYPE: FLL FRAME: 42Y VOLTS: 208-230 PH: 1 AMPS: 2.3 HZ: 50/60 INS.: A AMB.: 40° C DUTY: AIR COVER CAP.: 6 MFD/ 370V ENCL: OPEN UL LOGO CSA LOGO THERMALLY PROTECTED TYPE C	

PERFORMANCE CURVE NO.	TORQUE @ 1625 RPM (50°C)	APPROVED SAMPLE	UL COMPONENT FILE #	CCN #	CSA FILE #	CLASS #
C31778	19.7 OZ. FT.	322P684	E46412	PRGY2	LR43341	4211-01

GEOMETRIC CHARACTERISTICS & SYMBOLS

- ∟ FLATNESS
- STRAIGHTNESS
- ∠ ANGULARITY
- ⊥ PERPENDICULARITY (SQUARENESS)
- // PARALLELISM
- ROUNDNESS (CIRCULARITY)
- ∅ CYLINDRICITY
- △ PROFILE OF ANY SURFACE
- ∩ PROFILE OF ANY LINE
- ↑ RUNOUT
- ⊕ TRUE POSITION
- ◎ CONCENTRICITY
- = SYMMETRY

ASME Y14.5M 1994

REGAL-BELOIT CORPORATION (RBC) PROVIDES TECHNICAL ASSISTANCE TO OUR CUSTOMERS IN SEVERAL AREAS. SINCE RBC DOES NOT RECEIVE ALL DATA CONCERNING THE USE AND APPLICATION OF THE MOTOR, THE SUITABILITY OF THE MOTOR FOR THE APPLICATION MUST BE DETERMINED BY THE CUSTOMER.

DIMENSIONS WITHOUT TOLERANCES ARE FOR REFERENCE ONLY.

DR BY: J. RUPERT 05-05-2003

APPD: J. RUPERT 05-07-2003

THIRD ANGLE PROJECTION

EDS DATE 11-11-2011  
FORMAT REV H

CONFIDENTIAL: THIS DRAWING AND ITS INFORMATION ARE THE EXCLUSIVE AND CONFIDENTIAL PROPERTY OF REGAL-BELOIT CORPORATION AND ARE NOT TO BE DISCLOSED, DUPLICATED, DISTRIBUTED OR OTHERWISE USED WITHOUT THE WRITTEN CONSENT OF REGAL-BELOIT CORPORATION. -ALL RIGHTS RESERVED.

**REGAL REGAL-BELOIT CORPORATION**

DESCRIPTION: MODEL-RFHP-42FR OUTLINE

SIZE C DWG NO 11927-048

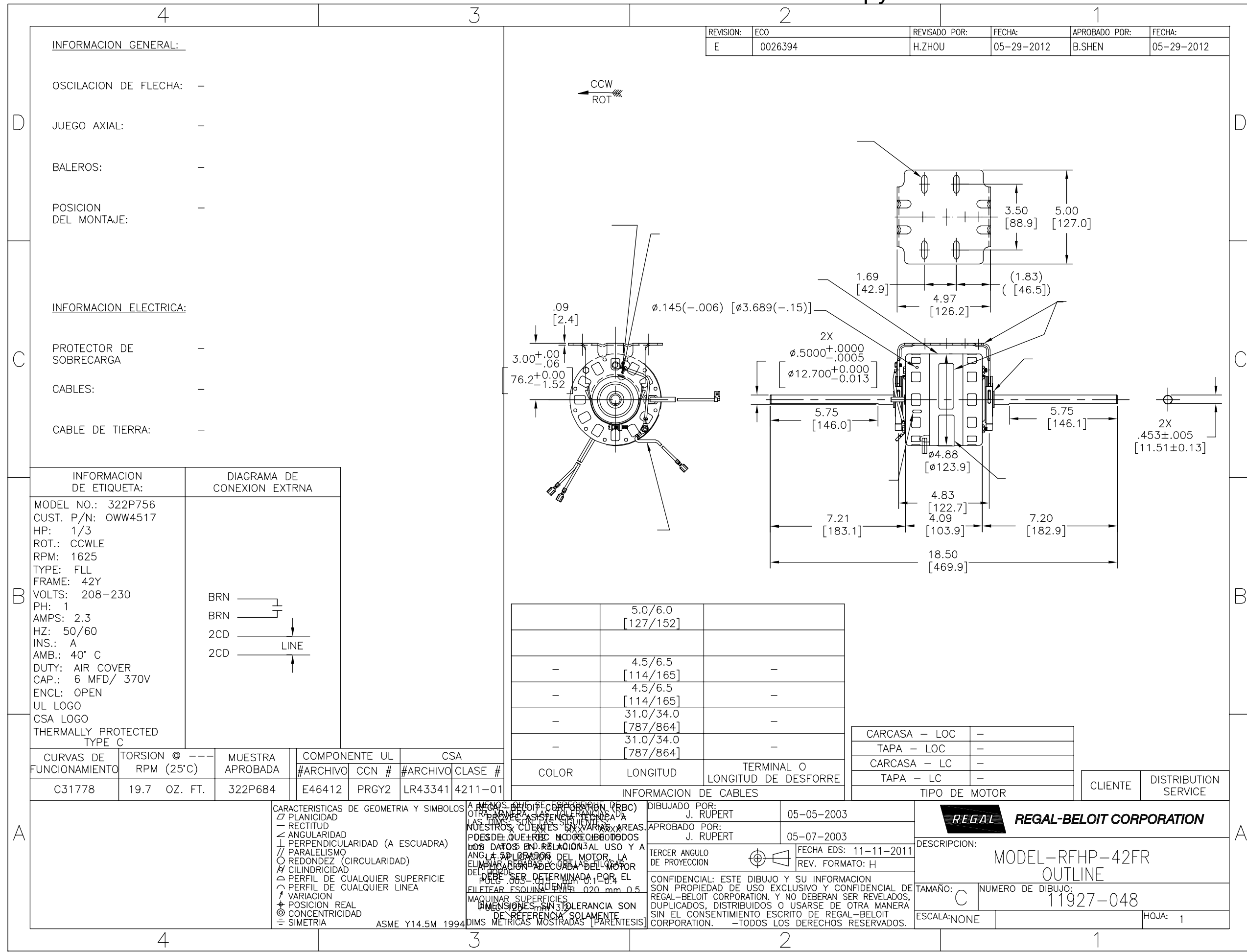
SCALE NONE SHEET 1

4

3

2

1



REVISION:	ECO	REVISADO POR:	FECHA:	APROBADO POR:	FECHA:
E	0026394	H.ZHOU	05-29-2012	B.SHEN	05-29-2012

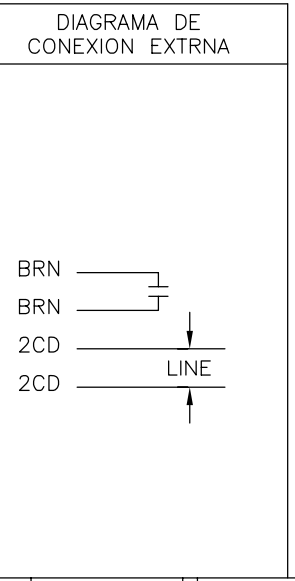
INFORMACION GENERAL:

OSCILACION DE FLECHA: -  
 JUEGO AXIAL: -  
 BALEROS: -  
 POSICION DEL MONTAJE: -

INFORMACION ELECTRICA:

PROTECTOR DE SOBRECARGA: -  
 CABLES: -  
 CABLE DE TIERRA: -

INFORMACION DE ETIQUETA:  
 MODEL NO.: 322P756  
 CUST. P/N: OWW4517  
 HP: 1/3  
 ROT.: CCWLE  
 RPM: 1625  
 TYPE: FLL  
 FRAME: 42Y  
 VOLTS: 208-230  
 PH: 1  
 AMPS: 2.3  
 HZ: 50/60  
 INS.: A  
 AMB.: 40° C  
 DUTY: AIR COVER  
 CAP.: 6 MFD/ 370V  
 ENCL: OPEN  
 UL LOGO  
 CSA LOGO  
 THERMALLY PROTECTED TYPE C



	5.0/6.0	
	[127/152]	
-	4.5/6.5	-
-	[114/165]	-
-	4.5/6.5	-
-	[114/165]	-
-	31.0/34.0	-
-	[787/864]	-
-	31.0/34.0	-
-	[787/864]	-

CARCASA - LOC	-
TAPA - LOC	-
CARCASA - LC	-
TAPA - LC	-

CLIENTE	DISTRIBUTION SERVICE
---------	----------------------

CURVAS DE FUNCIONAMIENTO	TORSION @ RPM (25°C)	MUESTRA APROBADA	COMPONENTE UL	CSA
C31778	19.7 OZ. FT.	322P684	#ARCHIVO PRGY2	LR43341 4211-01

CARACTERISTICAS DE GEOMETRIA Y SIMBOLOS  
 Z PLANICIDAD  
 - RECTITUD  
 / ANGULARIDAD  
 L PERPENDICULARIDAD (A ESCUADRA)  
 // PARALELISMO  
 O REDONDEZ (CIRCULARIDAD)  
 R CILINDRICIDAD  
 Δ PERFIL DE CUALQUIER SUPERFICIE  
 ∩ PERFIL DE CUALQUIER LINEA  
 / VARIACION  
 ⊕ POSICION REAL  
 ⊙ CONCENTRICIDAD  
 = SIMETRIA

REGAL-BELOIT CORPORATION (RBC)  
 OTRA PROVEEDORA ASISTENCIA TECNICA A NUESTROS CLIENTES EN VARIAS AREAS. PODEMOS QUE RBC NO RECIBIMOS LOS DATOS EN RELACION AL USO Y A ANGULO DE PROYECCION DEL MOTOR. LA ELIMINACION ADECUADA DEL MOTOR DEBE SER DETERMINADA POR EL POLS. 003-441-1111 0.1-0.2 FILETEAR ESQUINAS EN 0.20 mm 0.5 MAQUINAR SUPERFICIES DIMENSIONES SIN TOLERANCIA SON DE REFERENCIA SOLAMENTE DIMS METRICAS MOSTRADAS [PARENTESIS]

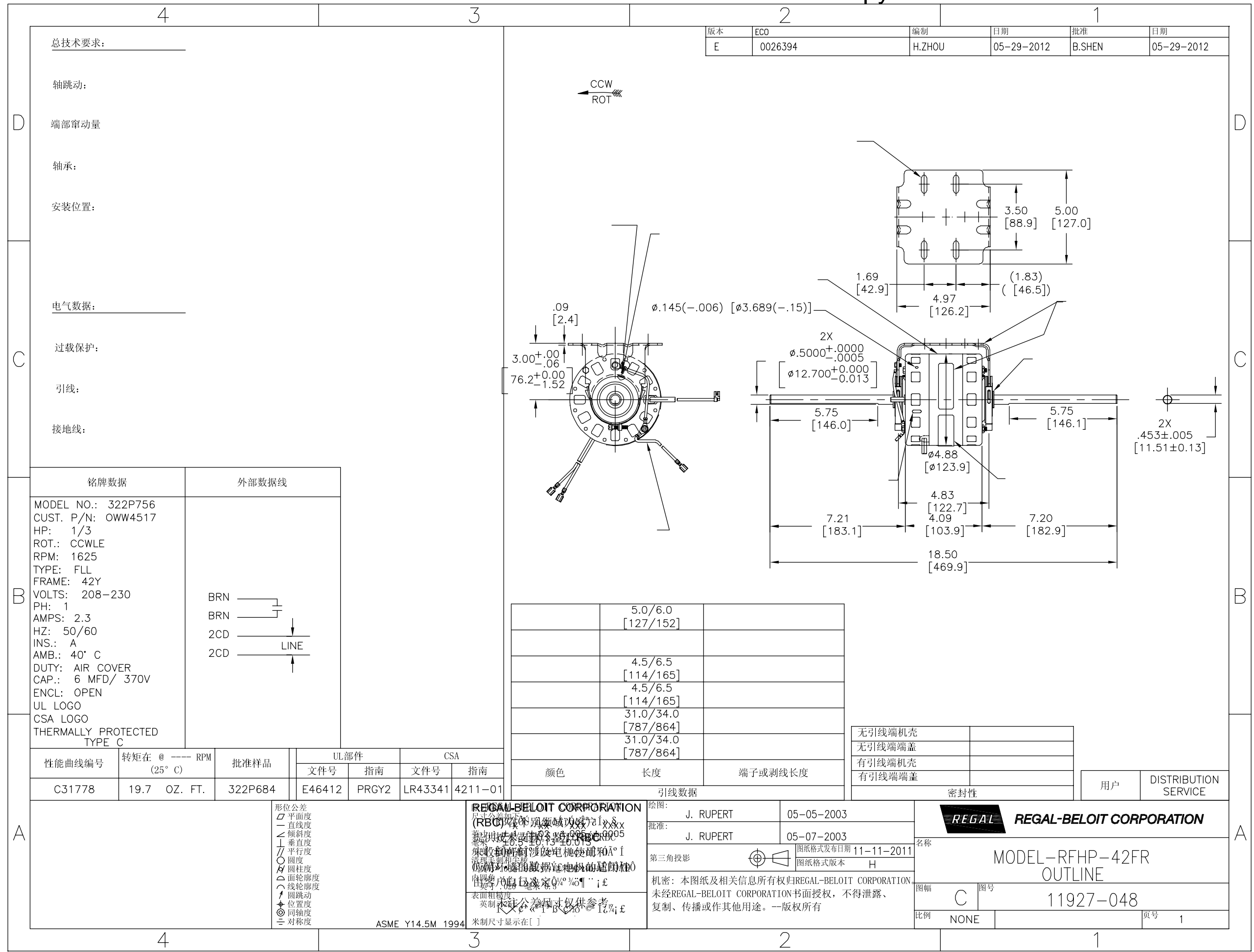
DIBUJADO POR: J. RUPERT 05-05-2003  
 APROBADO POR: J. RUPERT 05-07-2003  
 TERCER ANGULO DE PROYECCION  
 FECHA EDS: 11-11-2011  
 REV. FORMATO: H  
 CONFIDENCIAL: ESTE DIBUJO Y SU INFORMACION SON PROPIEDAD DE USO EXCLUSIVO Y CONFIDENCIAL DE REGAL-BELOIT CORPORATION. Y NO DEBERAN SER REVELADOS, DUPLICADOS, DISTRIBUIDOS O USARSE DE OTRA MANERA SIN EL CONSENTIMIENTO ESCRITO DE REGAL-BELOIT CORPORATION. -TODOS LOS DERECHOS RESERVADOS.

**REGAL REGAL-BELOIT CORPORATION**

DESCRIPCION: MODEL-RFHP-42FR OUTLINE

TAMAÑO: C NUMERO DE DIBUJO: 11927-048

ESCALA: NONE HOJA: 1



版本	ECO	编制	日期	批准	日期
E	0026394	H.ZHOU	05-29-2012	B.SHEN	05-29-2012

总技术要求:

轴跳动:

端部窜动量

轴承:

安装位置:

电气数据:

过载保护:

引线:

接地线:

铭牌数据	外部数据线
MODEL NO.: 322P756 CUST. P/N: OWW4517 HP: 1/3 ROT.: CCWLE RPM: 1625 TYPE: FLL FRAME: 42Y VOLTS: 208-230 PH: 1 AMPS: 2.3 HZ: 50/60 INS.: A AMB.: 40° C DUTY: AIR COVER CAP.: 6 MFD/ 370V ENCL: OPEN UL LOGO CSA LOGO THERMALLY PROTECTED TYPE C	BRN ———— BRN ———— 2CD ———— 2CD ———— LINE

颜色	长度	端子或剥线长度
	5.0/6.0 [127/152]	
	4.5/6.5 [114/165]	
	4.5/6.5 [114/165]	
	31.0/34.0 [787/864]	
	31.0/34.0 [787/864]	

无引线端机壳	
无引线端端盖	
有引线端机壳	
有引线端端盖	

用户	DISTRIBUTION SERVICE
----	----------------------

性能曲线编号	转矩在 @ --- RPM (25° C)	批准样品	UL部件	CSA
C31778	19.7 OZ. FT.	322P684	文件号 指南	文件号 指南
			E46412 PRGY2	LR43341 4211-01

形位公差	REGAL-BELOIT CORPORATION
平面度	(RBO) 0.0005
直线度	0.0005
倾斜度	0.0005
垂直度	0.0005
平行度	0.0005
圆度	0.0005
圆柱度	0.0005
面轮廓度	0.0005
线轮廓度	0.0005
圆跳动	0.0005
位置度	0.0005
同轴度	0.0005
对称度	0.0005

ASME Y14.5M 1994

米制尺寸显示在 [ ]

绘图: J. RUPERT 05-05-2003

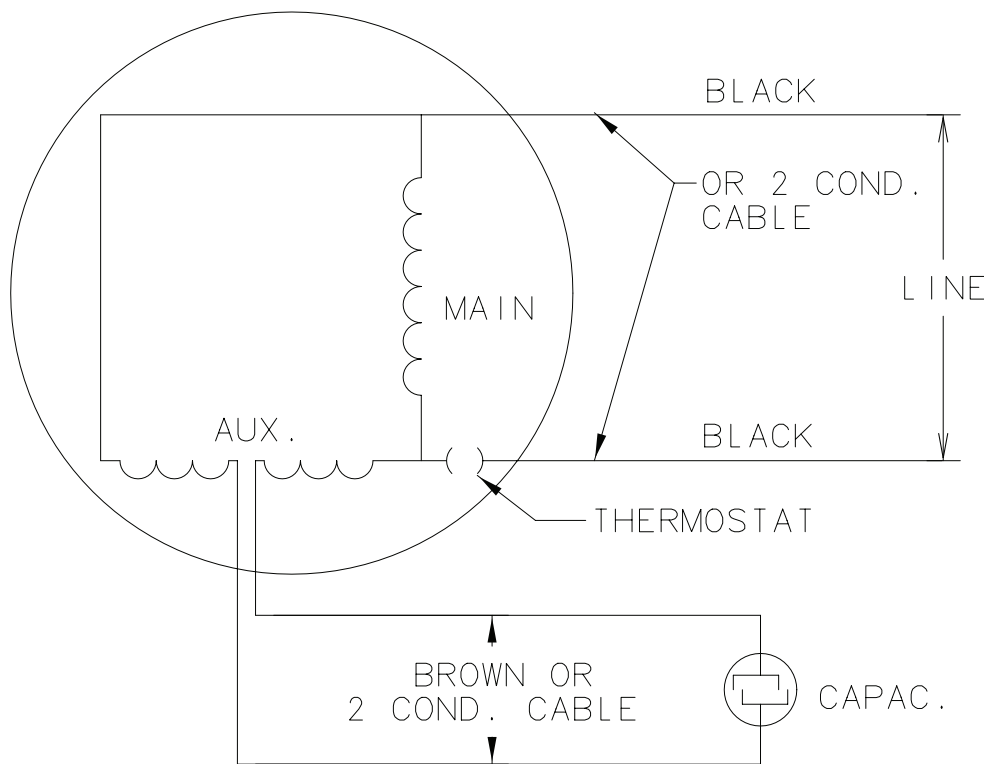
批准: J. RUPERT 05-07-2003

第三角投影


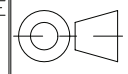
机密: 本图纸及相关信息所有权归REGAL-BELOIT CORPORATION。未经REGAL-BELOIT CORPORATION书面授权, 不得泄露、复制、传播或作其他用途。一版权所有

REGAL-BELOIT CORPORATION	
名称	MODEL-RFHP-42FR OUTLINE
图幅	C
图号	11927-048
比例	NONE
页号	1

QUALITY CONTROL NOTE:  
TO CHECK THE WDGS. FOR OPENS,  
VERIFY THE CONTINUITY BETWEEN  
THE TWO CAPACITOR LEADS



A	06/23/03	REDRAWN TO CAD	-	KAG	0343652
	DATE	CHANGED FROM	ENG	DRF	NOTICE
			APPROVED		

GEOMETRIC CHARACTERISTICS & SYMBOLS □ FLATNESS — STRAIGHTNESS < ANGULARITY ⊥ PERPENDICULARITY (SQUARENESS) // PARALLELISM ○ ROUNDNESS (CIRCULARITY) ⌀ CYLINDRICITY △ PROFILE OF ANY SURFACE ◌ PROFILE OF ANY LINE ↗ RUNOUT ⊕ TRUE POSITION ◎ CONCENTRICITY = SYMMETRY	UNLESS OTHERWISE SPECIFIED DIMENSION TOLERANCES ARE AS FOLLOWS .X .XX .XXX INCHES ±.02 ±.005 METRIC ±.5 ±.13 ANGLES ±.50 DEG REMOVE BURRS AND BREAK SHARP EDGES .003-.015. CORNER FILLETS TO .020 MACHINE SURFACES 125✓	MATERIAL -	DRAWN KLINE 07/02/75 APPROVED CORBIN 01/05/75	<b>A.O. SMITH</b> A DIVISION OF A.O. SMITH CORPORATION <b>ELECTRICAL PRODUCTS COMPANY</b> TIPP CITY, OHIO  COPYRIGHT 1995
	CONFIDENTIAL: THIS DRAWING AND ITS INFORMATION ARE THE EXCLUSIVE AND CONFIDENTIAL PROPERTY OF A.O. SMITH CORP. AND ARE NOT TO BE DISCLOSED, DUPLICATED, DISTRIBUTED OR OTHERWISE USED WITHOUT THE WRITTEN CONSENT OF A.O. SMITH CORP. - ALL RIGHTS RESERVED	PROCESS -	REFERENCE -	DESCRIPTION CONN. DIAG.
	APPLICATION -	USER/F I ER42 / CONEXT	SIZE <b>A</b> 	PART NUMBER 2494A79
	SCALE -	NOTICE -	SHEET -	