

# PRODUCT INFORMATION PACKET



Model No: ARB2034L1  
Catalog No: ARB2034L1  
Fan and Blower Motor, 1/3-1/9 HP, 1 Ph, 60 Hz, 115 V, 1800 RPM, 56Z Frame, TEAO



Regal and Century are trademarks of Regal Rexnord Corporation or one of its affiliated companies.  
©2022 Regal Rexnord Corporation, All Rights Reserved. MC017097E





**Nameplate Specifications**

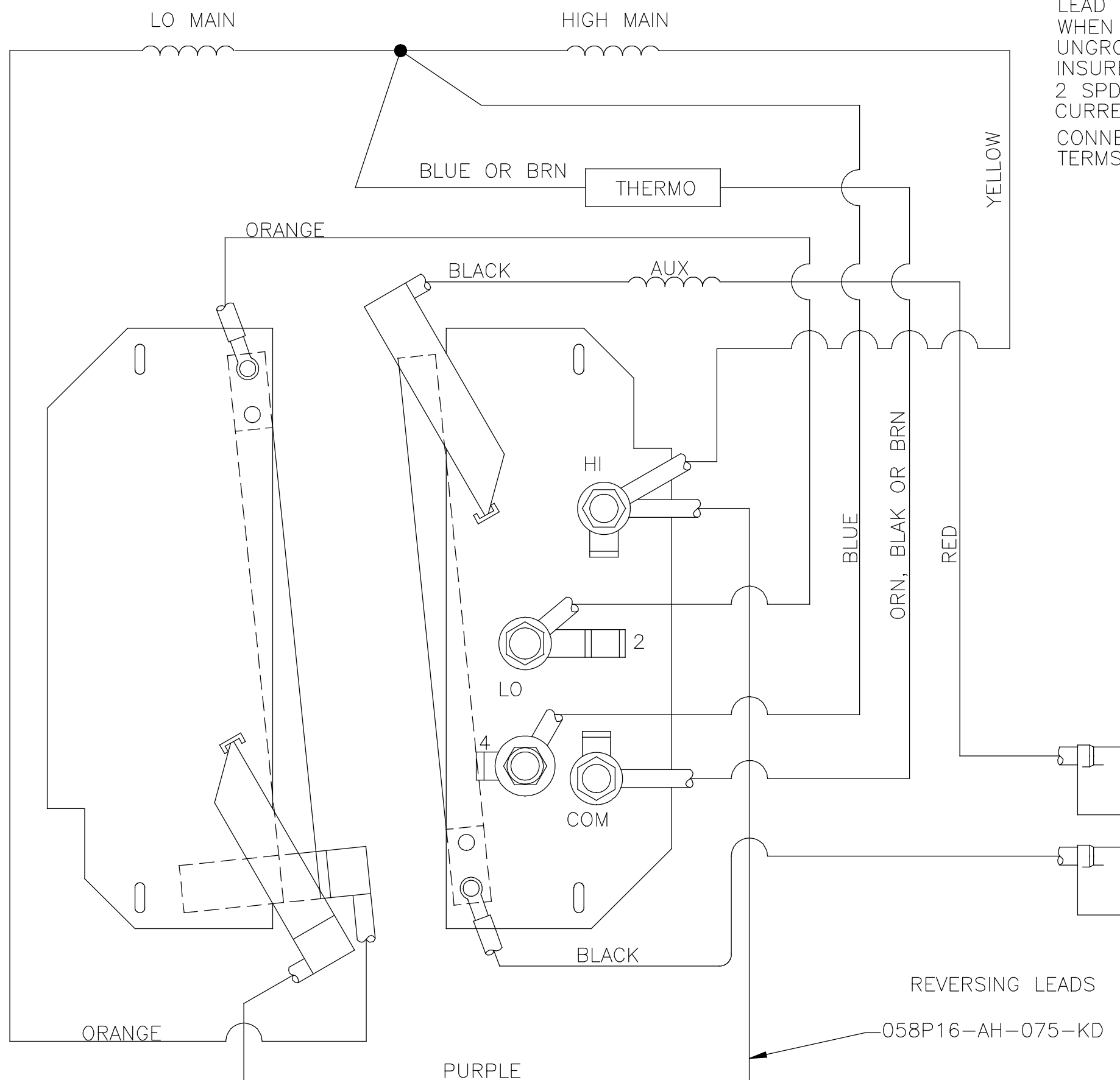
Output HP	<b>1/3-1/9 Hp</b>	Output KW	<b>0.25 kW</b>
Frequency	<b>60 Hz</b>	Voltage	<b>115 V</b>
Current	<b>5.5/4.0 A</b>	Speed	<b>1725/1140 rpm</b>
Service Factor	<b>1</b>	Phase	<b>1</b>
Duty	<b>Continuous</b>	Insulation Class	<b>B</b>
Frame	<b>56Z</b>	Enclosure	<b>Totally Enclosed Air Over</b>
Thermal Protection	<b>Automatic</b>	Ambient Temperature	<b>40 °C</b>
UL	<b>No</b>	CSA	<b>Y</b>
CE	<b>N</b>	Number of Speeds	<b>1</b>

**Technical Specifications**

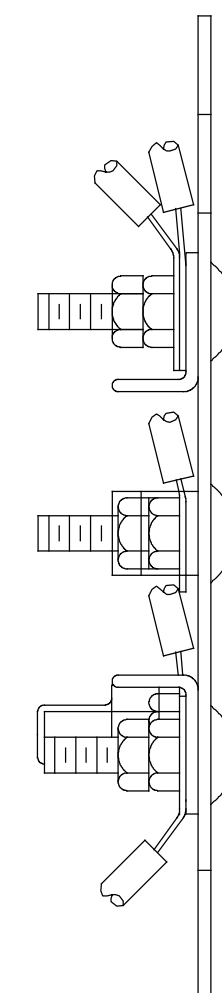
Electrical Type	<b>Split Phase</b>	Starting Method	<b>Across The Line</b>
Poles	<b>4/6</b>	Rotation	<b>Reversible</b>
Mounting	<b>Resilient Base</b>	Drive End Bearing	<b>Ball</b>
Opp Drive End Bearing	<b>Ball</b>	Frame Material	<b>Rolled Steel</b>
Shaft Type	<b>Keyed</b>	Overall Length	<b>10.97 in</b>
Frame Length	<b>6.19 in</b>	Shaft Diameter	<b>0.625 in</b>
Shaft Extension	<b>1.62 in</b>		
Connection Drawing	<b>618191-001A</b>	Outline Drawing	<b>ARB2034L1-S01</b>

This is an uncontrolled document once printed or downloaded and is subject to change without notice. Date Created:11/28/2022

REV	ECO	REV BY	DATE	APPD	DATE
E	ECO-0179077	D.SURYAWANSHI	12/19/2019		



LEAD LOCATION SHOULD BE ESSENTIALLY AS SHOWN WHEN GROUNDED POWER SUPPLY IS USED, CONNECT UNGROUNDED SUPPLY LINE TO COMM. TERMINAL TO INSURE MAX. THERMOGUARD PROTECTION.  
 2 SPD.-SINGLE VOLTAGE,REVERSABLE-THERMO,MIN. CURRENT PER CONTACT  
 CONNECT REVERSING LEADS TO TERMS' MARKED BY ARROWS



	CONNECT LINE AS FOLLOWS
HIGH SPEED	TERMINAL HI & COM
LOW SPEED	TERMINAL LO & COM

-001A	CCW	BLACK → 2	93GR
		RED → 4	0686
-002B	CW	RED → 2	
		BLACK → 4	

GEOMETRIC CHARACTERISTICS & SYMBOLS  
 ▽ FLATNESS  
 — STRAIGHTNESS  
 ∠ ANGULARITY  
 ⊥ PERPENDICULARITY (SQUARENESS)  
 // PARALLELISM  
 ○ ROUNDNESS (CIRCULARITY)  
 ⌀ CYLINDRICITY  
 △ PROFILE OF ANY SURFACE  
 ∩ PROFILE OF ANY LINE  
 ↑ RUNOUT  
 ⊕ TRUE POSITION  
 ⊙ CONCENTRICITY  
 = SYMMETRY

UNLESS OTHERWISE SPECIFIED DIM. TOLERANCES ARE AS FOLLOWS:  
 INCH X XX XXX XXXX  
 INCH ±.1 ±.02 ±.005 ±.0005  
 mm ±0.5 ±0.13 ±0.013  
 ANG. ±.50 DEG  
 REMOVE BURRS & BREAK SHARP EDGES:  
 INCH .003-.015 mm 0.1-0.4  
 CORNER FILLETS TO:  
 INCH .020 mm 0.5  
 MACHINE SURFACES:  
 INCH 125 mm 3.2  
 METRIC DIMS. SHOWN IN [BRACKETS]

DR BY: SHANKS  
 APPD:  
 01-26-1994  
 EDS DATE 02-22-2008  
 FORMAT REV F  
 THIRD ANGLE PROJECTION  
 CONFIDENTIAL: THIS DRAWING AND ITS INFORMATION ARE THE EXCLUSIVE AND CONFIDENTIAL PROPERTY OF A.O. SMITH CORP. AND ARE NOT TO BE DISCLOSED, DUPLICATED, DISTRIBUTED OR OTHERWISE USED WITHOUT THE WRITTEN CONSENT OF A.O. SMITH CORP.  
 -ALL RIGHTS RESERVED. ASME Y14.5M 1994

**AC Smith**  
 Innovation has a name.  
**ELECTRICAL PRODUCTS COMPANY**  
 A DIVISION OF A. O. SMITH CORPORATION

DESCRIPTION: EXTERNAL-PART-GROUP

SIZE: C DWG NO: 618191-001

SCALE: NONE SHEET: 1