

PRODUCT INFORMATION PACKET

FASCO®

Model No: D671B

Catalog No: D671B

Refrigeration Motor, 1/15 HP, 1 Ph, 60 Hz, 115/208-230 V, 1550 RPM, 1 Speed, 3.3" Diameter, OAO



Regal and Fasco are trademarks of Regal Rexnord Corporation or one of its affiliated companies.

©2022 Regal Rexnord Corporation, All Rights Reserved. MC017097E

RegalRexnord



Nameplate Specifications

Output HP	1/15 Hp	Output KW	0.05 kW
Frequency	60 Hz	Voltage	115/208-230 V
Current	1.90/0.84-0.94 A	Speed	1550 rpm
Service Factor	1	Phase	1
Duty	Air Over	Insulation Class	B
Frame	3.3	Enclosure	Open Air Over
Thermal Protection	Thermally Protected	Ambient Temperature	40 °C
UL	Recognized	CSA	N
CE	N	Number of Speeds	1

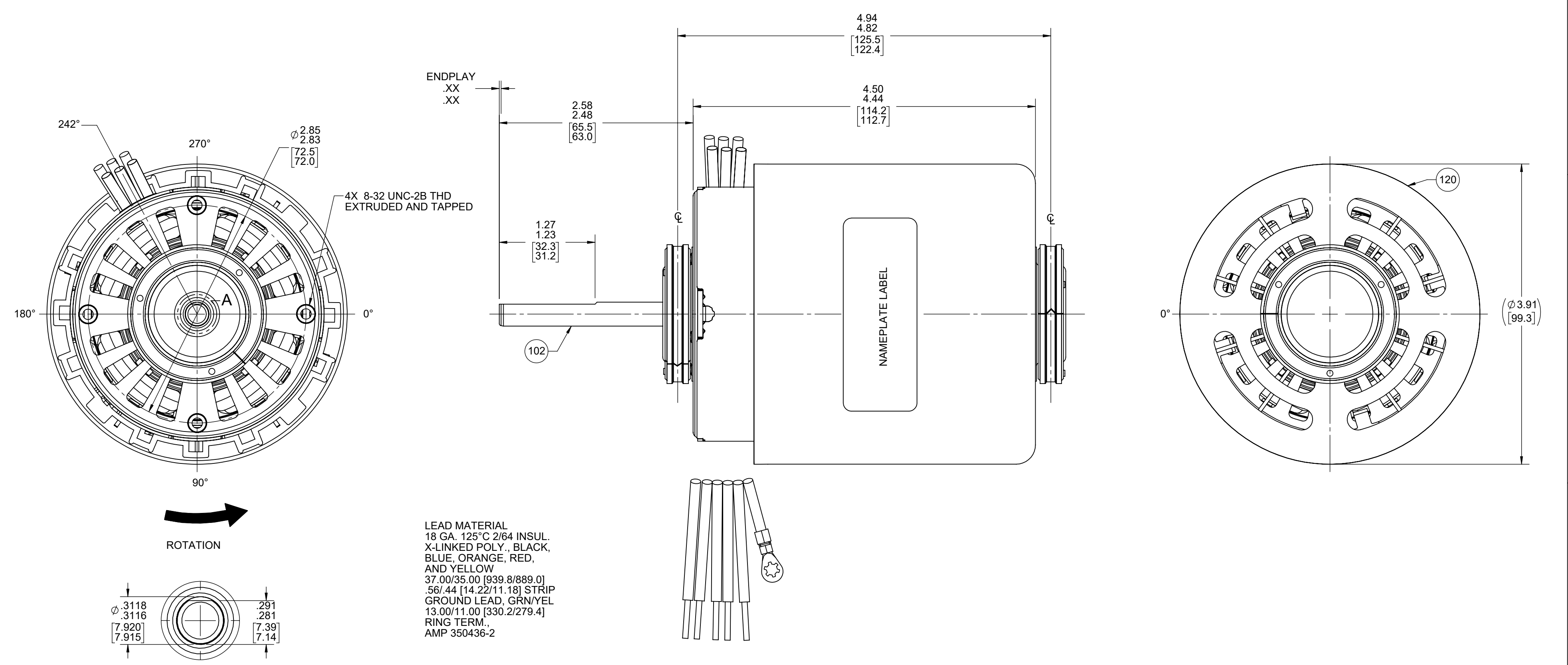
Technical Specifications

Electrical Type	Shaded Pole	Starting Method	Across The Line
Poles	4	Rotation	Counterclockwise Shaft End
Mounting	Resilient Rings	Drive End Bearing	Ball
Opp Drive End Bearing	Ball	Frame Material	Steel
Shaft Type	Flat	Overall Length	7.48 in
Frame Length	3.07 in	Shaft Diameter	0.312 in
Shaft Extension	2.55 in		
Connection Drawing	SEE OUTLINE	Outline Drawing	71732168

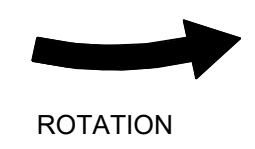
This is an uncontrolled document once printed or downloaded and is subject to change without notice. Date Created:11/29/2022

FRONT END

BACK END



DETAIL A
SHAFT DETAIL



- NOTES:
- MOTOR HAS 416 SS SHAFT.
 - NO PACKAGING TAPE OVER CARTON LABEL.

LEAD MATERIAL
 18 GA. 125°C 2/64 INSUL.
 X-LINKED POLY., BLACK,
 BLUE, ORANGE, RED,
 AND YELLOW
 37.00/35.00 [939.8/889.0]
 .56/.44 [14.22/11.18] STRIP
 GROUND LEAD, GRN/YEL
 13.00/11.00 [330.2/279.4]
 RING TERM.,
 AMP 350436-2

SAFETY WARNING
 This motor must be grounded in accordance with local or national electrical codes to prevent possible injury due to electrical shock

AVERTISSEMENT DE SÉCURITÉ
 Ce moteur doit être fondée sur conformément à la réglementation locale ou national électrique codes pour prévenir d'éventuelles blessures en raison de choc électrique

APPLY IN CONVIENT LOCATION TO READ RIGHT FROM BACK END

00464537 00464625

FASCO™

Assembled In Mexico
 No. 71732168 TYPE U73B1 AO E40513
 115/208-230 V 60 Hz Class B
 1550 RPM
 Model D671B 1.9/.84-.94 A
 Thermally Protected Max Amb: 40°C
 Reference 1/15 HP
 Sealed Ball Brg

Connection Diagram
 115 V 208-230 V
 Orn — Line Orn — Line
 Blk — Ins Blk — Ins
 Red — Ins Red — Ins
 Blu — Line Blu — Line
 Yel — Line Yel — Line
 Grn/Yel — Grd

61299553

CUSTOMER:	FASCO DIST.	APPLICATION:	COUNTER SALES				
CUSTOMER PN:	D671B	MOTOR WEIGHT:					
		ENVIRONMENT:	DAMP				
		MOTOR TYPE	REFERENCE SAMPLE				
		SHADED POLE					
	B 00	LA 73	FR 28				
		A V	S 07				
		C PC	E 9				
		B 0	A 0				
TYPICAL PERFORMANCE AT 115/208-230 VOLTS 60 HZ							
	IDLE		LOADED		LOCKED		BREAK
MOTOR SPEED	RPM	AMP	WATT	IN OZ	RPM	AMP	WATT
208V/60	1789	.67	65	35.4	1550	.84	112
230V/60	1786	.75	81	44.2	1550	.94	141
115V/60	1787	1.51	82	44.2	1550	1.90	142
							197
							48.0

DRAWING REVISION BC	REVISION BY MLS	REV DATE/DATE 8/24/2022	TOLERANCES (EXCEPT AS NOTED): DEC. INCH mm ANGLE .X ±0.1 [±3] ±1° .XX ±0.01 [±0.3] .XXX ±0.005 [±0.13] .XXXX ±0.0005 [±0.013]	DRAWN BY KSA		Regal Beloit America, Inc.	
REQUEST NUMBER ECR-0220388	APPROVED BY KBB	DATE 8/24/2022	REMOVE BURRS & BREAK SHARP EDGES: .003/.015 [.08/.38] X 45° CORNER FILLETS: R.02 [.5] MACHINED SURFACES: ±.25 / mm 3.2 INCH mm mm DIMENSIONS IN [BRACKETS] ARE FOR REFERENCE ONLY	DATE 4/27/2016	DESCRIPTION OUTLINE MOTOR ASSY	PROCESS/FINISH BLACK PAINT	
REQUEST NUMBER DESCRIPTION UPDATED FASCO LOGO ON NAMEPLATE LABEL				APPROVED BY MLS			
COPYRIGHT (PER REVISION DATE) REGAL BELOIT AMERICA, INC. ALL RIGHTS RESERVED. PROPRIETARY AND CONFIDENTIAL INFORMATION - THIS DOCUMENT IS THE PROPERTY OF REGAL BELOIT AMERICA, INC. (OWNER) AND CONTAINS OWNER'S PROPRIETARY INFORMATION. ANY PERSON, CORPORATION OR OTHER FIRM RECEIVING IT IS DEEMED, BY RECEIVING IT, TO AGREE THAT IT, AND/OR ANY PART OF IT, SHALL NOT BE DISCLOSED TO ANY PERSON, CORPORATION OR OTHER ENTITY, DUPLICATED, AND/OR USED, EXCEPT AS EXPRESSLY APPROVED IN WRITING IN ADVANCE BY OWNER. THIS DOCUMENT SHALL BE RETURNED TO OWNER UPON REQUEST. IT MAY BE SUBJECT TO CERTAIN RESTRICTIONS UNDER APPLICABLE EXPORT CONTROL LAWS AND REGULATIONS.				DATE 4/27/2016	MATERIAL		
				THIRD ANGLE PROJECTION	SIZE C	DRAWING NUMBER 71732168	SHEET 1 OF 2

4

3

2

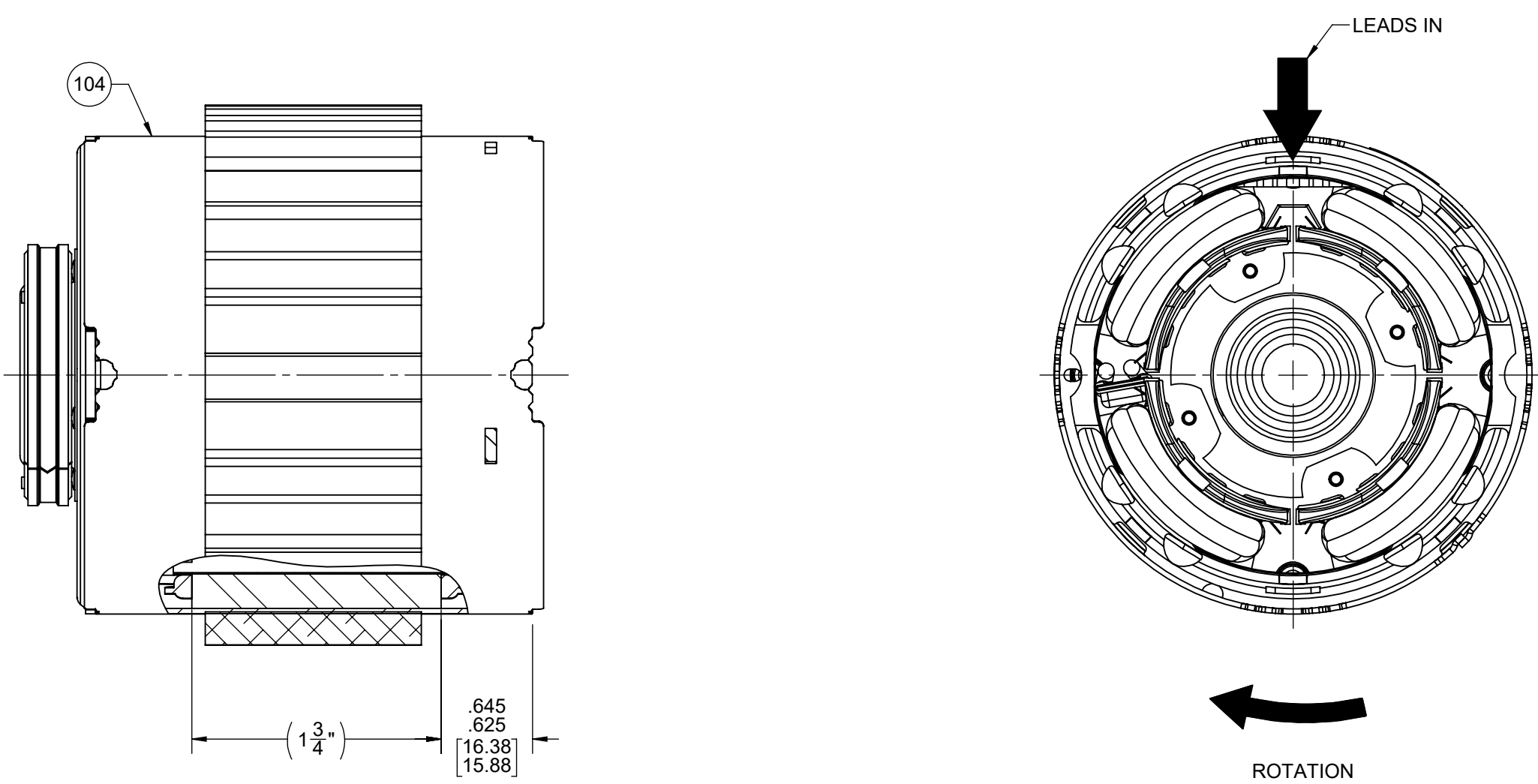
1

NOTES:

- 1. STAKE STATOR TO MAIN FRAME PER 88830264.
- 2. MAXIMUM TORQUE REQUIRED TO TURN MOTOR SHAFT IS 3/8 INCH-OUNCE.
- 3. ASSEMBLE SPRING BETWEEN WASHER AND BEARING ON FRONT END, WITH SPRING FINGERS TOWARD BEARING.
- 4. ASSEMBLE BALL BEARINGS TO BEARING RETAINERS PER 88834419.

FRONT END

BACK END



BLAST COOLED SPECIFICATIONS

- 1. FAN MUST TRACK WITHIN .035 [.89] AND HAVE .10 [2.6] MIN. CLEARANCE TO BEARING BOSS AFTER PRESS ON OPERATION.
- 2. ASSEMBLE COOLING CASE PER 88834269.
- 3. DIMENSION OVER END FRAMES TO BE 3.06/3.02 [77.7/76.7].

PACKING SPECIFICATIONS

- 1. PLACE (1) FILLER PAD ON PALLET, (1) BETWEEN EACH LAYER, AND (1) ON TOP OF PALLET LOAD.
- 2. PLACE (4) PC 208 STUDS AND (1) PC 218 INSTRUCTION SHEET INTO PC 204 BAG. PLACE (1) BAG IN EACH MOTOR CARTON.
- 3. PACK 1 UNIT PER CONTAINER, 40 CONTAINERS PER LAYER, 6 LAYERS PER PALLET, 240 MAX. AMT. PER PALLET. PER 88834200 AND 88834408.
- 4. CARTON LABELS MUST ALL FACE ONE DIRECTION TOWARD THE OPEN END OF THE PALLET. SEE 88834408.

DRAWING REVISION BC	REVISION BY MLS	REV DATE/© DATE 8/24/2022	TOLERANCES (EXCEPT AS NOTED): DEC. INCH mm ANGLE	DRAWN BY KSA	Regal Rexnord Regal Beloit America, Inc.
REQUEST NUMBER ECR-0220388	APPROVED BY KBB	DATE 8/24/2022	.X ±0.1 [±3] ±1° .XX ±0.01 [±0.3] .XXX ±0.005 [±0.13] .XXXX ±0.0005 [±0.013]	DATE 4/27/2016	
REQUEST NUMBER DESCRIPTION UPDATED FASCO LOGO ON NAMEPLATE LABEL			REMOVE BURRS & BREAK SHARP EDGES: .003/.015 [.08/.38] X 45° CORNER FILLETS: R.02 [.5] MACHINED SURFACES: .125/ mm 3.2 INCH/mm	APPROVED BY MLS	DESCRIPTION OUTLINE MOTOR ASSY
COPYRIGHT (PER REVISION DATE) REGAL BELOIT AMERICA, INC. ALL RIGHTS RESERVED. PROPRIETARY AND CONFIDENTIAL INFORMATION - THIS DOCUMENT IS THE PROPERTY OF REGAL BELOIT AMERICA, INC. (OWNER) AND CONTAINS OWNER'S PROPRIETARY INFORMATION. ANY PERSON, CORPORATION OR OTHER FIRM RECEIVING IT IS DEEMED, BY RECEIVING IT, TO AGREE THAT IT, AND/OR ANY PART OF IT, SHALL NOT BE DISCLOSED TO ANY PERSON, CORPORATION OR OTHER ENTITY, DUPLICATED, AND/OR USED, EXCEPT AS EXPRESSLY APPROVED IN WRITING IN ADVANCE BY OWNER. THIS DOCUMENT SHALL BE RETURNED TO OWNER UPON REQUEST. IT MAY BE SUBJECT TO CERTAIN RESTRICTIONS UNDER APPLICABLE EXPORT CONTROL LAWS AND REGULATIONS.			THIRD ANGLE PROJECTION	DATE 4/27/2016	PROCESS/FINISH BLACK PAINT
				SIZE C	DRAWING NUMBER 71732168
				SHEET 2 OF 2	

4

3

2

1