

PRODUCT INFORMATION PACKET

FASCO®

Model No: D485
Catalog No: D485

Refrigeration Motor, 1/20 HP, 1 Ph, 50 Hz, 115/208-230 V, 1550 RPM, 1 Speed, 4.4" Diameter, OAO



Regal and Fasco are trademarks of Regal Rexnord Corporation or one of its affiliated companies.
©2023 Regal Rexnord Corporation, All Rights Reserved. MC017097E

RegalRexnord



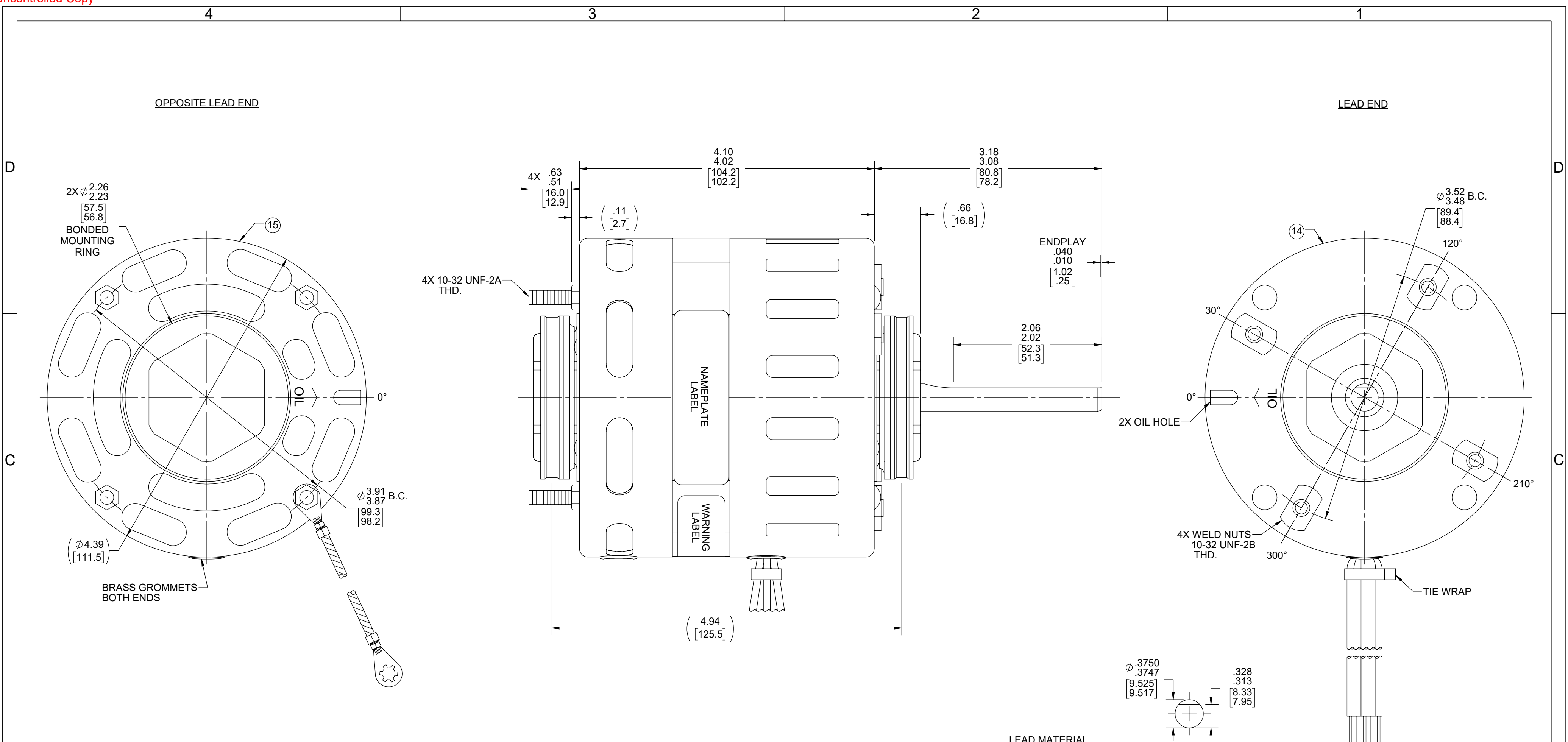
Nameplate Specifications

Phase	1	Output HP	1/20 Hp
Output KW	0.04 kW	Voltage	115/208-230 V
Speed	1550 rpm	Service Factor	1
Frame	4.4	Enclosure	Open Air Over
Thermal Protection	Thermally Protected	Ambient Temperature	40 °C
Frequency	50 Hz	Current	2.2/1.1 A
Duty	Air Over	Insulation Class	A
UL	Recognized	CSA	Y
CE	N	Number of Speeds	1

Technical Specifications

Electrical Type	Shaded Pole	Starting Method	Across The Line
Poles	4	Rotation	Counterclockwise Shaft End
Mounting	Resilient Ring - Extended Studs	Drive End Bearing	Sleeve
Opp Drive End Bearing	Sleeve	Frame Material	Na
Shaft Type	Flat	Overall Length	7.94 in
Shaft Diameter	0.375 in	Shaft Extension	3.15 in
Outline Drawing	71086401	Connection Drawing	SEE OUTLINE

This is an uncontrolled document once printed or downloaded and is subject to change without notice. Date Created:09/25/2023



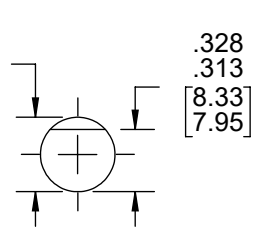
- NOTES:**
- MECHANICALLY REVERSIBLE.
 - SHAFT IS BONDERIZED.
 - THRU AIR SPACING BETWEEN WIRE AND METAL .094 [2.39].
 - FOR WASHER SET-UP, SEE CHART C6010279, DETAIL "Q".
 - ROTOR FREENESS TO BE WITHIN 3/4 OZ. IN.
 - TIE BOLT TORQUE TOLERANCE 7 - 10 IN. LBS.
 - ASSEMBLE PC 17 TIE WRAP AROUND ALL LEADS, WITH LEADS TAUT, AS CLOSE AS POSSIBLE TO COVER.
 - LOCATE ϕ OF NAMEPLATE ON ϕ OF STATOR AND CENTERED AT 0°.
 - MAXIMUM 0.1 Ω RESISTANCE BETWEEN GROUND TERMINAL AND MOTOR FRAME.
 - MOTORS MUST START WITH 180 VOLTS APPLIED TO LOWEST SPEED.
 - SEE PACKAGING MANUAL PAGE 2 FOR PACKAGING PROCEDURES.
 - PACK 1 PER CONTAINER, 40 CONTAINERS PER LAYER, 6 LAYERS PER PALLET, 240 MAX. PER PALLET.
 - PLACE PC 4 SHAFT BUSHING AND PC 23 PAMPHLET IN CONTAINER WITH MOTOR.
 - CENTER PC 9 CARTON LABEL ON END OF CONTAINER.
 - SEE DRAWING 87856079 SHEET 1 FOR PALLET LAYOUT.
 - CARTON LABELS MUST ALL FACE ONE DIRECTION TOWARD THE OPEN END OF THE PALLET. SEE 88834408.
 - NO PACKING TAPE OVER CARTON LABEL.

61305910

SAFETY WARNING
This motor must be grounded in accordance with local or national electrical codes to prevent possible injury due to electrical shock

AVERTISSEMENT DE SÉCURITÉ
Ce moteur doit être fondée sur conformément à la réglementation locale ou national électrique codes pour prévenir d'éventuelles blessures en raison de choc électrique

LEAD MATERIAL
18 GA. 105°C 2/64 INSUL. THERMO. WHITE, BLACK, BLU, RED, AND PURPLE
32.52/30.50 [825.5/774.4] .56/.44 [14.2/11.2] STRIP GROUND LEAD GRN/YEL 7.00/6.00 [177.8/152.4] W/ RING TERMINAL AMP 350436-2



FASCO™ No. 71086401 TYPE U8

Assembled In Mexico
115/208-230 V 50/60 Hz 2.2-1.1 A 1550 RPM 1/20 HP Model D485 Thermally Protected PH 1

Regal Rexnord Regal Beloit America, Inc.

Connection Diagram:
115 V: Wht Line, Pur Not Used, Blu Line, Red Line, Blk Line
230 V: Wht Line, Pur Not Used, Blu Line, Red Line, Blk Line

CUSTOMER:	FASCO DIST.	APPLICATION:	DIST. SALES	HI-POT TEST 2000 VOLTS MAX LEAKAGE CURRENT 5 mA							
CUSTOMER PN:	D485	MOTOR WEIGHT:									
		ENVIRONMENT:	DRY								
MOTOR TYPE		REFERENCE SAMPLE									
SHADED POLE											
B	LA	FR	A	S	C	E	B	A			
00	08	11	F	03	GF	5	5	0			
TYPICAL PERFORMANCE AT 115/230 VOLTS 60 HZ 1PH 1/20 HP											
MOTOR SPEED	IDLE		LOADED			LOCKED		BREAK			
	RPM	AMP	WATT	IN OZ	RPM	AMP	WATT	IN OZ			
HIGH 115 V	1760	1.9	104	50	1550	2.2	162	22	3.2	223	58
HIGH 230 V	1760	1.0	104	50	1550	1.1	162	22	1.6	223	58

PRODUCTION TEST AT IDLE 115/230 VOLTS 60 Hz		MOTOR SPEED
AMP	WATT	
2.09 - 1.71	114.4 - 93.6	HIGH 115 V
1.10 - .90	114.4 - 93.6	HIGH 230 V

DRAWING REVISION AB	REVISION BY SDM	REV DATE/DATE 3/30/2022	TOLERANCES (EXCEPT AS NOTED): DEC. INCH mm ANGLE .X ±0.1 [±3] ±1° .XX ±0.01 [±0.3] .XXX ±0.005 [±0.13] .XXXX ±0.0005 [±0.013]	DRAWN BY SDM	Regal Rexnord Regal Beloit America, Inc.
REQUEST NUMBER ECR-0216594	APPROVED BY MLS	DATE 3/30/2022	REMOVE BURRS & BREAK SHARP EDGES: .003/.015 [08/.38] X 45° CORNER FILLETS: R.02 [5] MACHINED SURFACES: .125/ mm 3.2/ mm DIMENSIONS IN [BRACKETS] ARE FOR REFERENCE ONLY	DATE 5/4/2021	
REQUEST NUMBER DESCRIPTION CHANGE N/P FASCO LOGO TO FASCO TM				APPROVED BY JMG	DESCRIPTION OUTLINE MOTOR ASSY
COPYRIGHT (PER REVISION DATE) REGAL BELOIT AMERICA, INC. ALL RIGHTS RESERVED. PROPRIETARY AND CONFIDENTIAL INFORMATION - THIS DOCUMENT IS THE PROPERTY OF REGAL BELOIT AMERICA, INC. ('OWNER') AND CONTAINS OWNER'S PROPRIETARY INFORMATION. ANY PERSON, CORPORATION OR OTHER FIRM RECEIVING IT IS DEEMED, BY RECEIVING IT, TO AGREE THAT IT, AND/OR ANY PART OF IT, SHALL NOT BE DISCLOSED TO ANY PERSON, CORPORATION OR OTHER ENTITY, DUPLICATED, AND/OR USED, EXCEPT AS EXPRESSLY APPROVED IN WRITING IN ADVANCE BY OWNER. THIS DOCUMENT SHALL BE RETURNED TO OWNER UPON REQUEST. IT MAY BE SUBJECT TO CERTAIN RESTRICTIONS UNDER APPLICABLE EXPORT CONTROL LAWS AND REGULATIONS.				DATE 5/4/2021	MATERIAL
THIRD ANGLE PROJECTION				SIZE C	DRAWING NUMBER 71086401
				PROCESS/FINISH GRAY	SHEET 1 OF 1