

PRODUCT INFORMATION PACKET

FASCO®

Model No: D480
Catalog No: D480

Refrigeration Motor, 1/10 HP, 1 Ph, 50 Hz, 115/208-230 V, 1550 RPM, 1 Speed, 4.4" Diameter, OAO



Regal and Fasco are trademarks of Regal Rexnord Corporation or one of its affiliated companies.
©2023 Regal Rexnord Corporation, All Rights Reserved. MC017097E

RegalRexnord



Nameplate Specifications

Phase	1	Output HP	1/10 Hp
Output KW	0.07 kW	Voltage	115/208-230 V
Speed	1550 rpm	Service Factor	1
Frame	4.4	Enclosure	Open Air Over
Thermal Protection	Thermally Protected	Ambient Temperature	40 °C
Frequency	50 Hz	Current	4.5/2.2 A
Duty	Air Over	Insulation Class	A
UL	Recognized	CSA	Y
CE	N	Number of Speeds	1

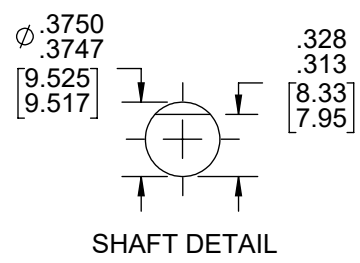
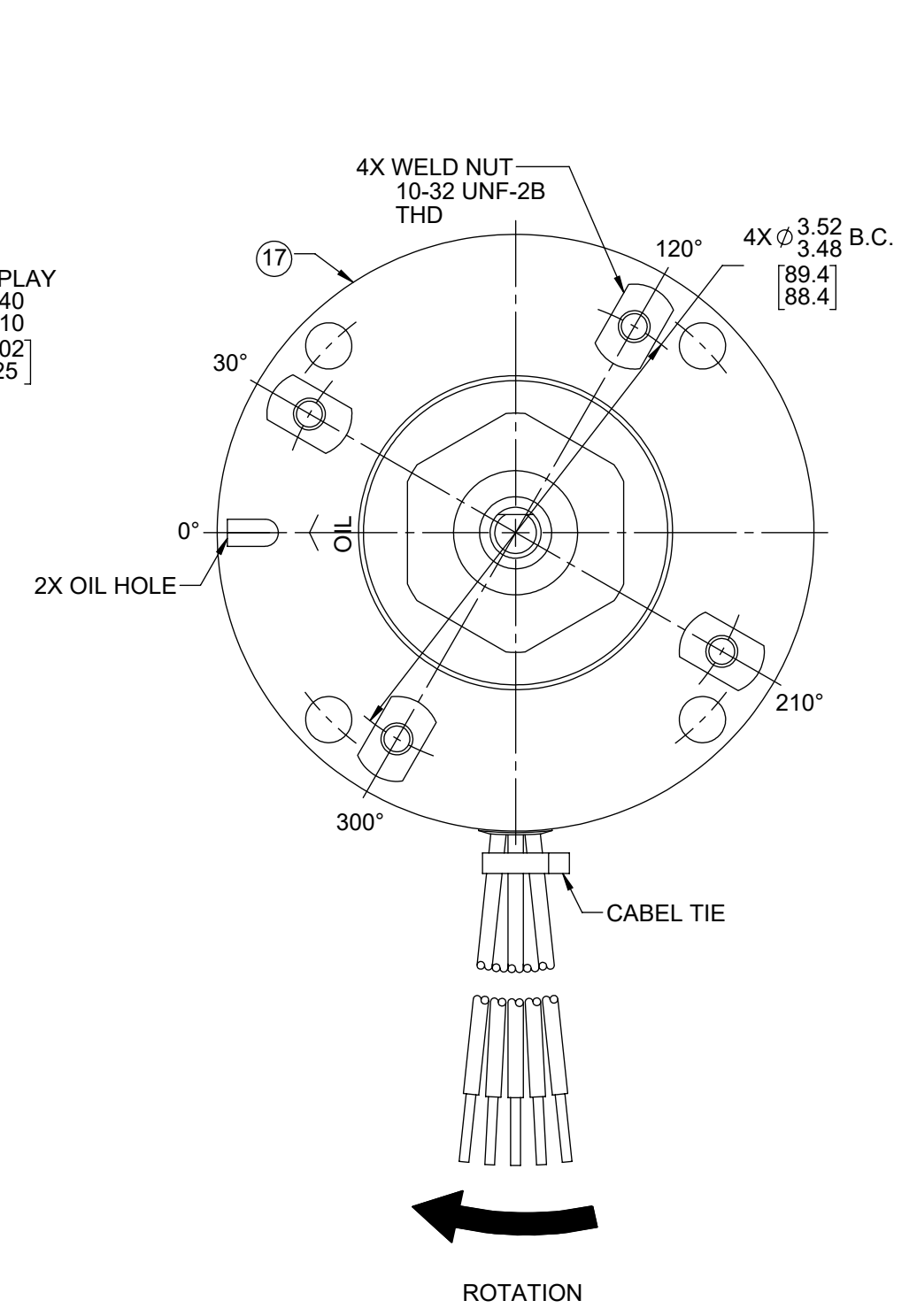
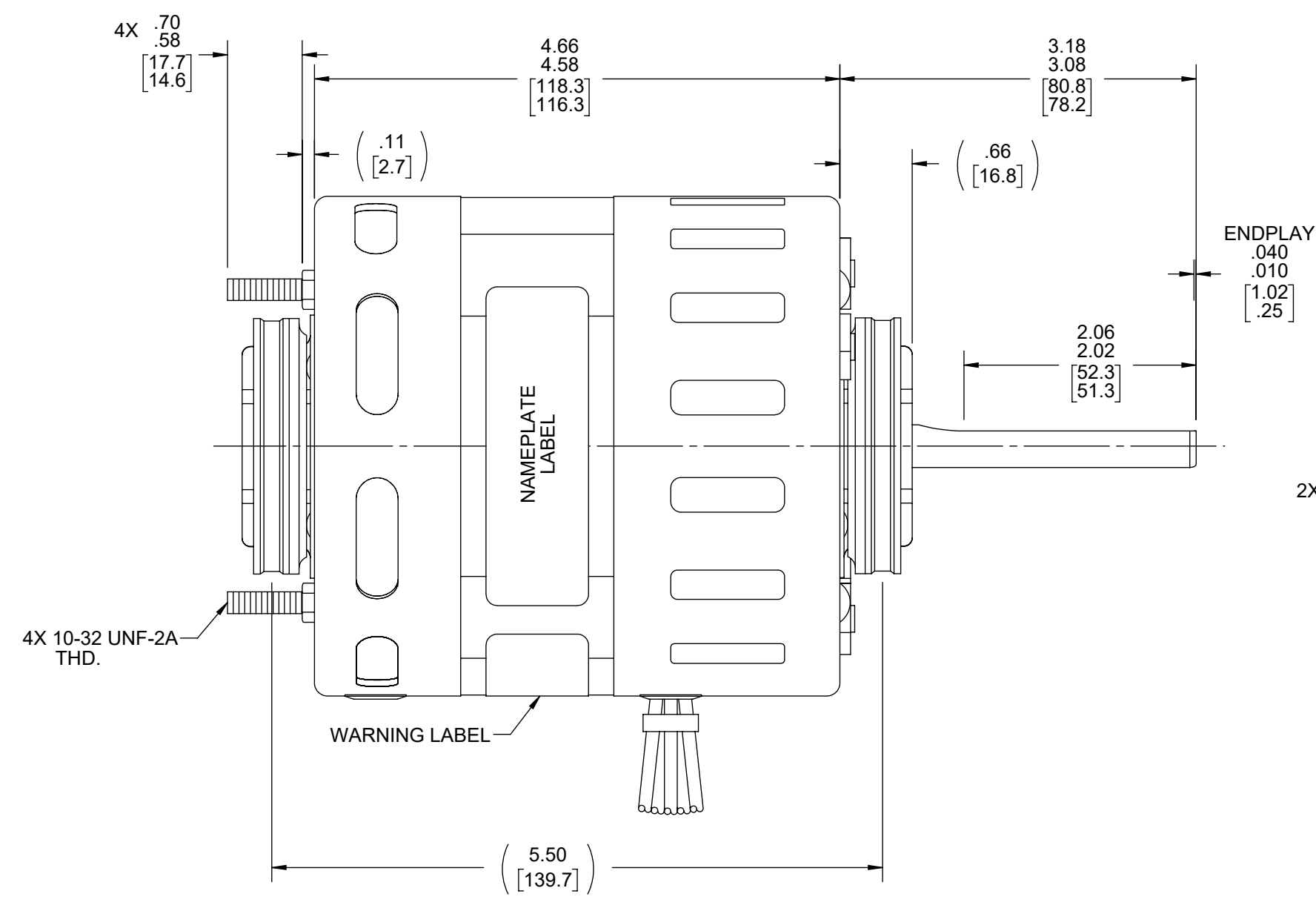
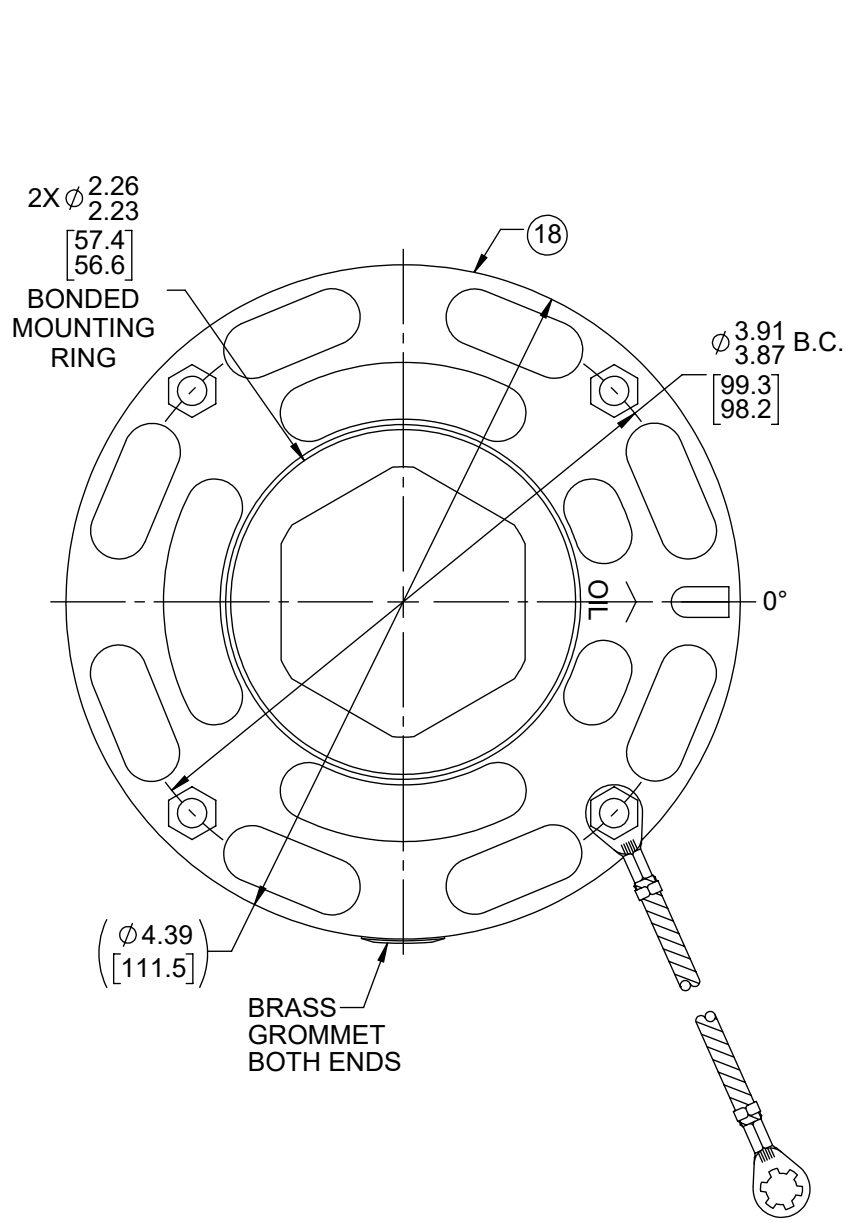
Technical Specifications

Electrical Type	Shaded Pole	Starting Method	Across The Line
Poles	4	Rotation	Clockwise Shaft End
Mounting	Resilient Ring - Extended Studs	Drive End Bearing	Sleeve
Opp Drive End Bearing	Sleeve	Frame Material	Na
Shaft Type	Flat	Overall Length	8.50 in
Shaft Diameter	0.375 in	Shaft Extension	3.15 in
Outline Drawing	71086346	Connection Drawing	SEE OUTLINE

This is an uncontrolled document once printed or downloaded and is subject to change without notice. Date Created:09/25/2023

OPPOSITE LEAD END

LEAD END



LEAD MATERIAL
18 GA. 105°C 2/64 INSUL.
THERMO. WHITE, BLACK,
BLUE, RED, AND PURPLE
32.50/30.50 [825.5/774.7]
.56/.44 [14.2/11.2] STRIP
GRN/YEL GROUND LEAD
7.00/6.00 [177.8/152.4]
W/ RING TERMINAL
AMP 350436-2

61305568

SAFETY WARNING
This motor must be grounded in accordance with local or national electrical codes to prevent possible injury due to electrical shock

AVERTISSEMENT DE SÉCURITÉ
Ce moteur doit être fondée sur conformément à la réglementation locale ou national électrique codes pour prévenir d'éventuelles blessures en raison de choc électrique

- NOTES:
1. SHAFT IS BONDERIZED.
 2. THRU AIR SPACING BETWEEN WIRE AND METAL .094 [2.39] MINIMUM.
 3. FOR WASHER SET-UP, SEE CHART C6010279, DETAIL "Q".
 4. ROTOR FREENESS TO BE WITHIN 3/4 OZ.IN.
 5. TIE BOLT TORQUE TOLERANCE 7 - 10 IN.LBS.
 6. ASSEMBLE CABLE TIE, 85416000, AROUND ALL LEADS (WITH LEADS HELD TAUT) AS CLOSE TO COVER AS POSSIBLE.
 7. MAXIMUM 0.1 Ω RESISTANCE BETWEEN GROUND TERMINAL AND MOTOR FRAME.
 8. MOTORS MUST START WITH 180 VOLTS APPLIED TO LOWEST SPEED.
 9. MECHANICALLY REVERSIBLE.
 10. SEE PACKAGING MANUAL PAGE 2 FOR PACKING PROCEDURES.
 11. PACK 1 PER CONTAINER, 40 CONTAINERS PER LAYER, 6 LAYERS PER PALLET, 240 MAX. PER PALLET.
 12. PLACE PAMPHLET, 61224579, IN CONTAINER WITH MOTOR.
 13. PACK SHAFT BUSHING, 00063274, IN CONTAINER WITH MOTOR.
 14. SEE DRAWING 87856079 SHEET 1 FOR PALLET LAYOUT.
 15. CENTER LABEL, 61229161, ON END OF CONTAINER.
 16. CARTON LABELS MUST ALL FACE ONE DIRECTION TOWARD THE OPEN END OF THE PALLET. SEE 88834408.
 17. NO PACKING TAPE OVER CARTON LABEL.

00464072

00464533

FASCO™

Assembled In Mexico

No. 71086346 TYPE U8
115/208-230 V 50/60 Hz
4.5-2.2 A 1550 RPM
Model D480
Thermally Protected

AO PH 1

1/10 HP

Connection Diagram
115 V 230 V
Wht — Line Wht — Line
Pur — Not Used
Blu —
Red — Line Red — Line
Blk — Line

61299553

LOCATE ϕ OF NAMEPLATE ON ϕ OF STATOR CENTERED AT 0°

CUSTOMER:	FASCO DIST	APPLICATION:	DIST SALES	HI-POT TEST 2000 VOLTS MAX LEAKAGE CURRENT 5 mA							
CUSTOMER PN:	D480	MOTOR WEIGHT:									
		ENVIRONMENT:	DRY								
MOTOR TYPE SHADED POLE		REFERENCE SAMPLE									
B	LA	FR	A	S	C	E	B	A			
00	08	11	F	06	GL	5	5	0			
TYPICAL PERFORMANCE AT 115/230 VOLTS 60 HZ 1 PH 1/10 HP											
MOTOR SPEED	IDLE		LOADED			LOCKED		BREAK			
	RPM	AMP	WATT	IN OZ	RPM	AMP	WATT	IN OZ			
115 V	1773	3.4	167	103	1550	4.3	297	37	6.3	381	112
230 V	1773	1.7	165	103	1550	2.1	297	37	3.1	381	112

PRODUCTION TEST AT IDLE 115/230 VOLTS 60 Hz		MOTOR SPEED
AMP	WATT	
3.74 - 3.06	183.7 - 150.3	115 V
1.87 - 1.53	181.5 - 148.5	230 V

DRAWING REVISION AC	REVISION BY SDM	REV DATE/© DATE 3/28/2022	TOLERANCES (EXCEPT AS NOTED): DEC. INCH mm ANGLE .X ±0.1 [±3] ±1° .XX ±0.01 [±0.3] .XXX ±0.005 [±0.13] .XXXX ±0.0005 [±0.013]	DRAWN BY SDM	Regal Rexnord Regal Beloit America, Inc.
REQUEST NUMBER ECR-0216484	APPROVED BY MLS	DATE 3/28/2022	REMOVE BURRS & BREAK SHARP EDGES: .003/.015 [.08/.38] X 45° CORNER FILLETS: R.02 [.5] MACHINED SURFACES: .125/ mm 3.2 mm DIMENSIONS IN [BRACKETS] INCH/mm ARE FOR REFERENCE ONLY	DATE 9/8/2020	
REQUEST NUMBER DESCRIPTION CHANGE N/P FASCO LOGO TO FASCO TM				APPROVED BY PLA	DESCRIPTION OUTLINE MOTOR ASSY
THIRD ANGLE PROJECTION				REFERENCE	MATERIAL
SIZE C				DRAWING NUMBER 71086346	PROCESS/FINISH GRAY
				SHEET 1 OF 1	