

PRODUCT INFORMATION PACKET

FASCO®

Model No: D410

Catalog No: D410

Draft Inducer Motor, 1/10 HP, 1 Ph, 60 Hz, 115 V, 3000 RPM, 1 Speed, 3.3" Diameter, OAO



Regal and Fasco are trademarks of Regal Rexnord Corporation or one of its affiliated companies.
©2022 Regal Rexnord Corporation, All Rights Reserved. MC017097E

RegalRexnord



Nameplate Specifications

Output HP	1/10 Hp	Output KW	0.07 kW
Frequency	60 Hz	Voltage	115 V
Current	1.5 A	Speed	3000 rpm
Service Factor	1	Phase	1
Duty	Air Over	Insulation Class	B
Frame	3.3	Enclosure	Open Air Over
Thermal Protection	Thermally Protected	Ambient Temperature	40 °C
UL	Recognized	CSA	N
CE	N	Number of Speeds	1

Technical Specifications

Electrical Type	Permanent Split Capacitor	Starting Method	Across The Line
Poles	2	Rotation	Reversible
Mounting	Extended Studs	Drive End Bearing	Ball
Opp Drive End Bearing	Ball	Frame Material	Steel
Shaft Type	Flat	Overall Length	10.92 in
Frame Length	4.80 in	Shaft Diameter	0.250 in
Shaft Extension	3.80 in		
Connection Drawing	00469122	Outline Drawing	71621821

This is an uncontrolled document once printed or downloaded and is subject to change without notice. Date Created:11/29/2022

4

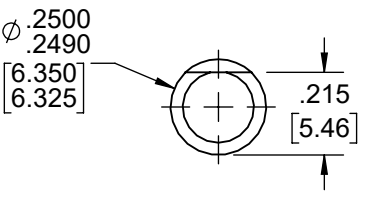
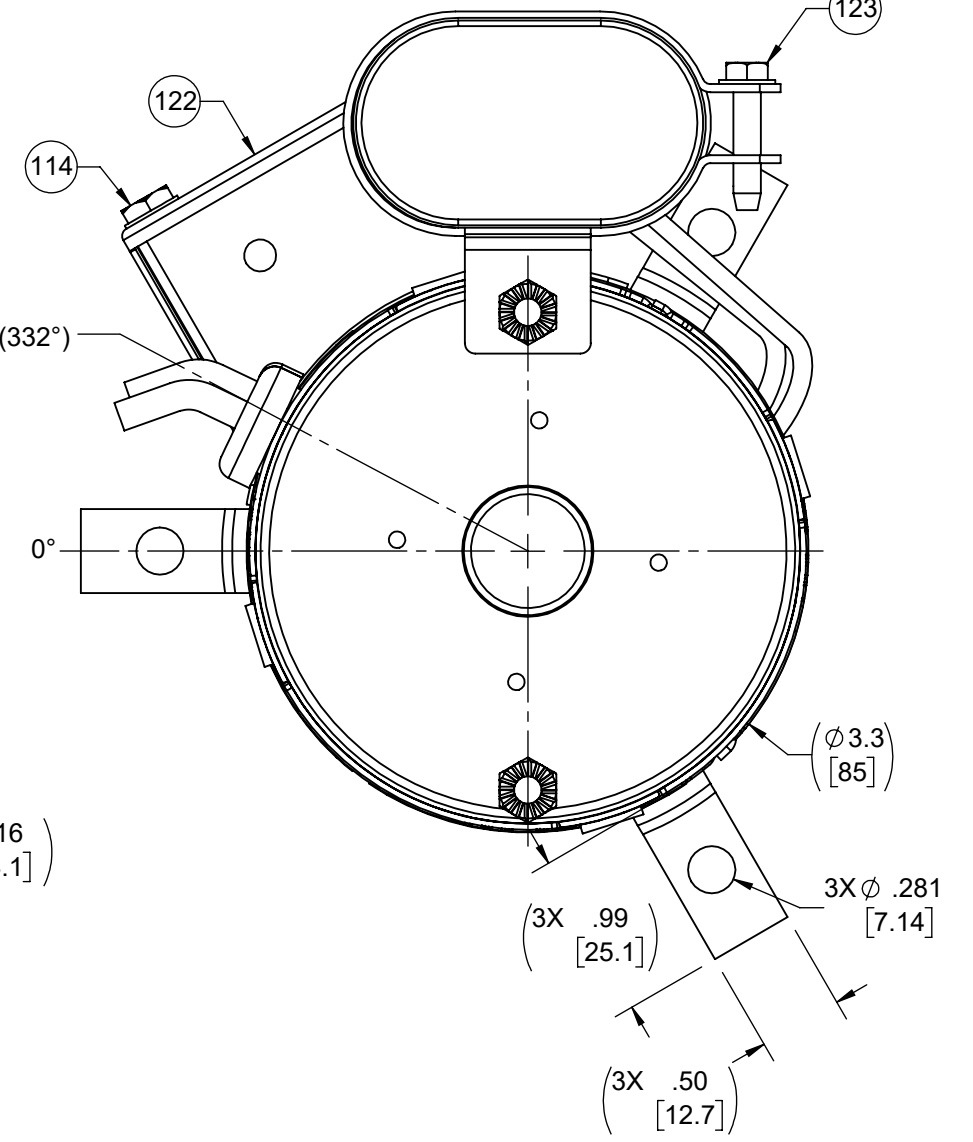
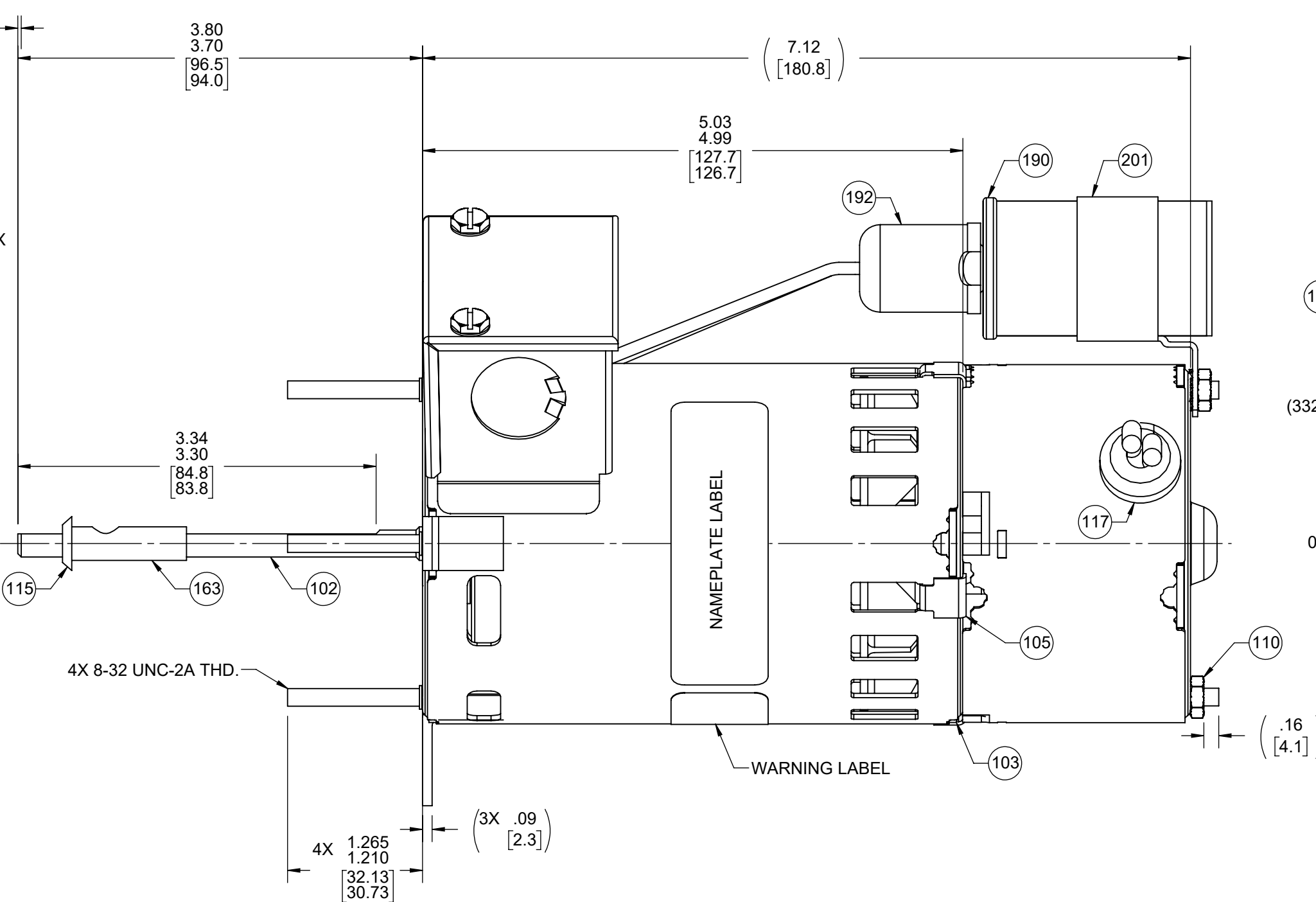
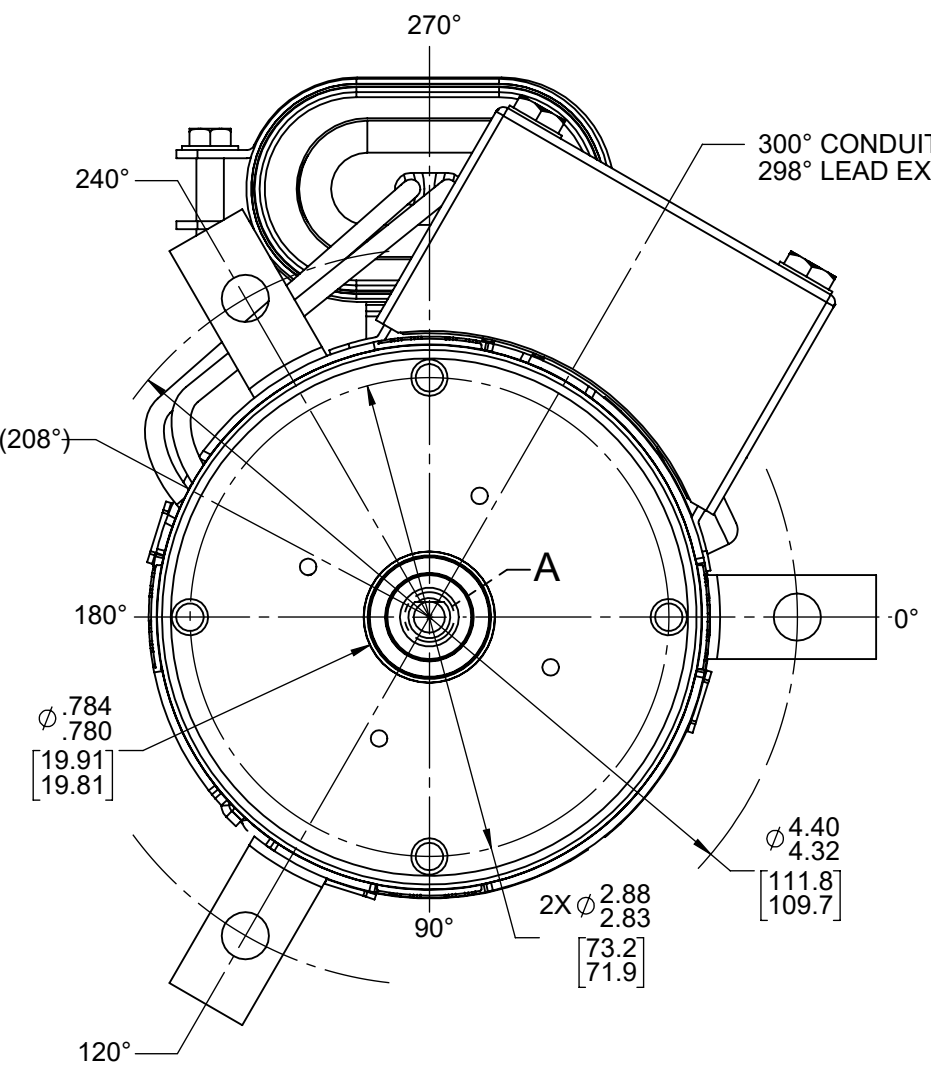
3

2

1

FRONT END

BACK END



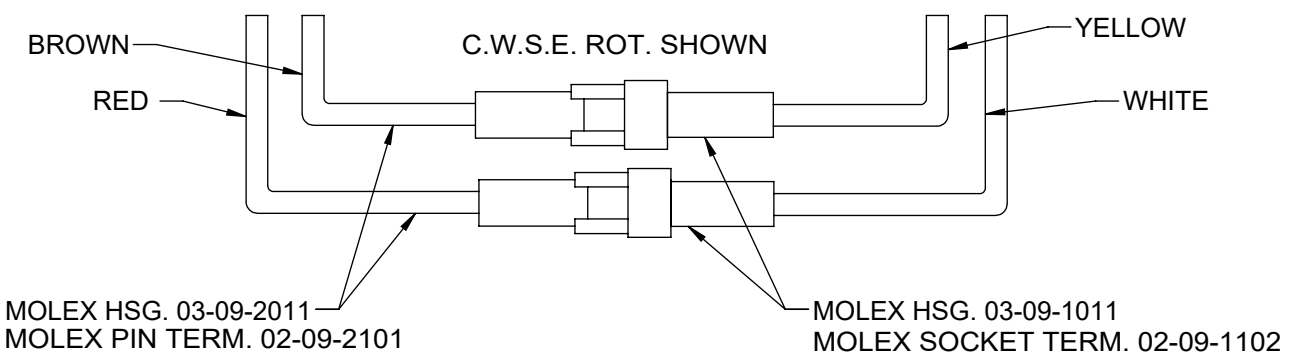
SHAFT DETAIL A

LEAD MATERIAL
18 GA 125°C, 2/64 INSUL.
X-LINKED POLY, (2) BLACK
23.00 / 21.00 [584.2 / 533.4]
.56 / .44 [14.2 / 11.2] STRIP

REVERSING LEADS
WHITE, RED, BROWN,
AND YELLOW
4.00 / 3.00 [101.6 / 76.2]

CAPACITOR LEADS
(2) BLUE
7.00 / 5.00 [177.8 / 127.0]
W/ FFLAG TERMINALS
AMP 42742-2

SWITCH LEADS
18 GA 125°C, 4/64 INSUL.
EPDM, (2) WHITE
23.00 / 21.00 [584.2 / 533.4]
.56 / .44 [14.2 / 11.2] STRIP



TO REVERSE ROTATION INTERCHANGE RED AND BROWN
MOTOR MUST HAVE C.W.S.E. CONNECTION WHEN SHIPPING.

SAFETY WARNING
This motor must be grounded in accordance with local or national electrical codes to prevent possible injury due to electrical shock

AVERTISSEMENT DE SÉCURITÉ
Ce moteur doit être fondée sur conformément à la réglementation locale ou national électrique codes pour prévenir d'éventuelles blessures en raison de choc électrique

- NOTES:
1. COIL LINE & REVERSING LEADS INSIDE CONDUIT BOX COVER AFTER TESTING AND SCURE WITH SCREW.
 2. NO KNOCKOUTS REMOVED.
 3. MOTOR HAS 416 STAINLESS STEEL SHAFT.
 4. ASSEMBLE BUSHING TO SHAFT AND HOLD IN PLACE WITH OIL SLINGER.
 5. NO PACKAGING TAPE OVER CARTON LABEL.

CUSTOMER: FASCO DIST.		APPLICATION: COUNTER SALES			
CUSTOMER PN: D410		MOTOR WEIGHT: 5.75 LBS.			
UP		ENVIRONMENT: DRY			
MOTOR TYPE					
P.S.C.					
B	LA	A	S		
00	62	34	F 06		
REFERENCE SAMPLE		C	E		
A		B	A		
0		0	0		
TYPICAL PERFORMANCE AT 115 VOLTS 60 HZ					
CAP: 7.5 MFD/370 VAC					
MOTOR SPEED	IDLE		LOADED		BREAK
	RPM	WATT	IN OZ	WATT	
3528	.64	73	38.7	1.42	45.7

00464072

FASCO™

Assembled In Mexico
No. 71621821
115 V
1.5 A
Model D410
SW280-1

TYPE U62B1
60 Hz
3000 RPM
(1 spd)

T.P. AO
Class B
1/10 HP
Sealed Ball Brg

61299553

7.5 MFD/370 VAC

00469122

Connection Diagram

Blk — Line	Blk — Line
Blk — Line	Blk — Line
Yel — Ins	Wht — Ins
Red — Ins	Red — Ins
Wht — Ins	Yel — Ins
Brn — Ins	Blu — Ins
Blu — Ins	Blu — Ins

DRAWING REVISION: AL	REVISION BY: SDM	REV DATE/© DATE: 5/2/2022	TOLERANCES (EXCEPT AS NOTED): DEC. INCH mm ANGLE .X ±0.1 [+3] ±1° .XX ±0.01 [+3] .XXX ±0.005 [+0.13] .XXXX ±0.0005 [+0.013]	DRAWN BY: S.DALTON	Regal Rexnord Regal Beloit America, Inc.
REQUEST NUMBER: ECR-0217395	APPROVED BY: KBB	DATE: 5/2/2022	REMOVE BURRS & BREAK SHARP EDGES: .003/.015 [.08/.38] X 45° CORNER FILLETS: R.02 [.5] MACHINED SURFACES: .125/ mm 3.2 mm DIMENSIONS IN [BRACKETS] ARE FOR REFERENCE ONLY	DATE: 12-13-2001	
REQUEST NUMBER DESCRIPTION: CHANGE N/P FASCO LOGO TO FASCO TM			REGAL BELLOIT AMERICA, INC. (OWNER) AND CONTAINS OWNER'S PROPRIETARY INFORMATION. ANY PERSON, CORPORATION OR OTHER FIRM RECEIVING IT IS DEEMED, BY RECEIVING IT, TO AGREE THAT IT, AND/OR ANY PART OF IT, SHALL NOT BE DISCLOSED TO ANY PERSON, CORPORATION OR OTHER ENTITY, DUPLICATED, AND/OR USED, EXCEPT AS EXPRESSLY APPROVED IN WRITING IN ADVANCE BY OWNER. THIS DOCUMENT SHALL BE RETURNED TO OWNER UPON REQUEST. IT MAY BE SUBJECT TO CERTAIN RESTRICTIONS UNDER APPLICABLE EXPORT CONTROL LAWS AND REGULATIONS.	APPROVED BY:	DESCRIPTION: OUTLINE MOTOR ASSY
THIRD ANGLE PROJECTION	SIZE: C	DRAWING NUMBER: 71621821	PROCESS/FINISH: BLACK PAINT	SHEET: 1 OF 2	

4

3

2

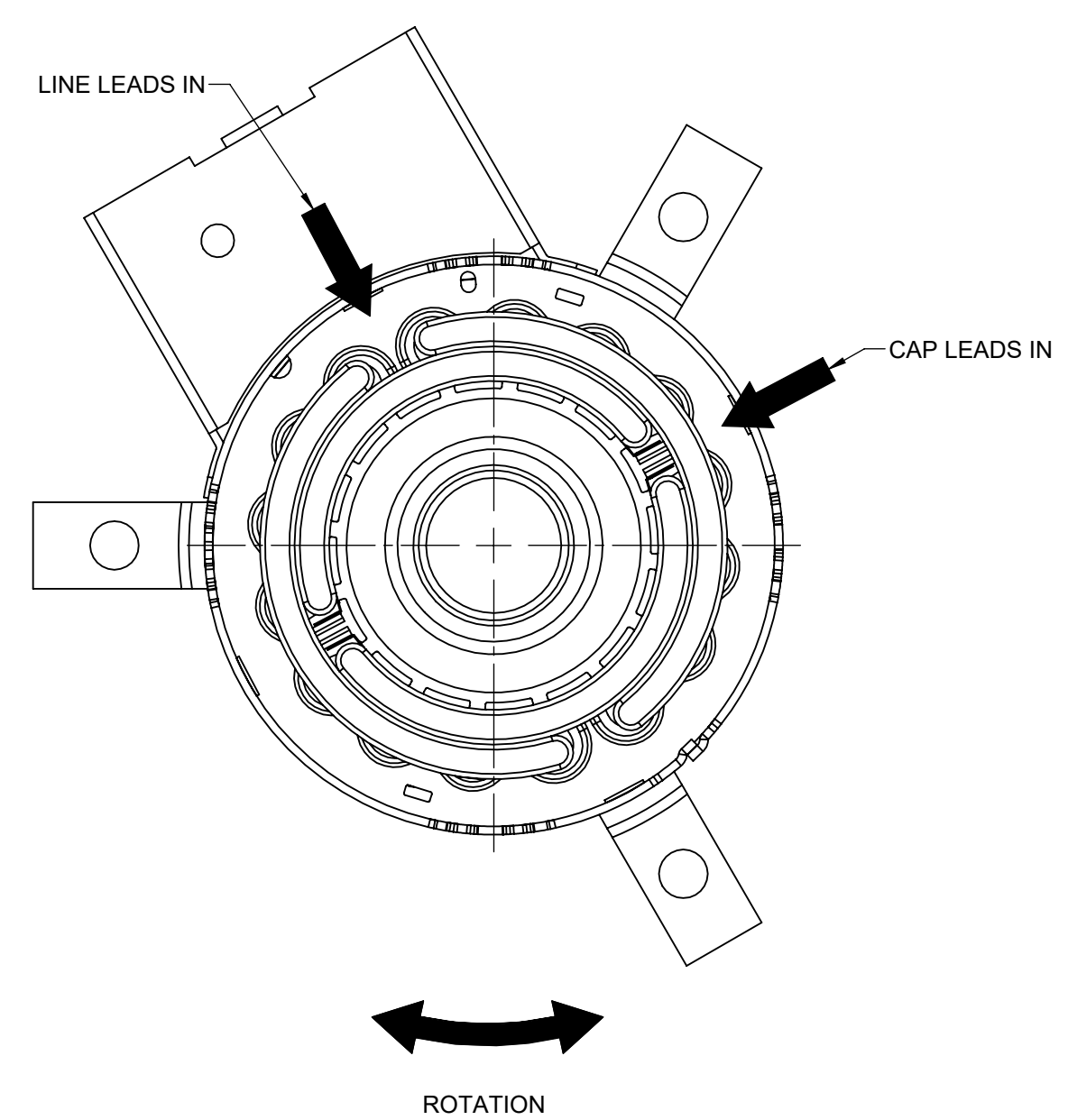
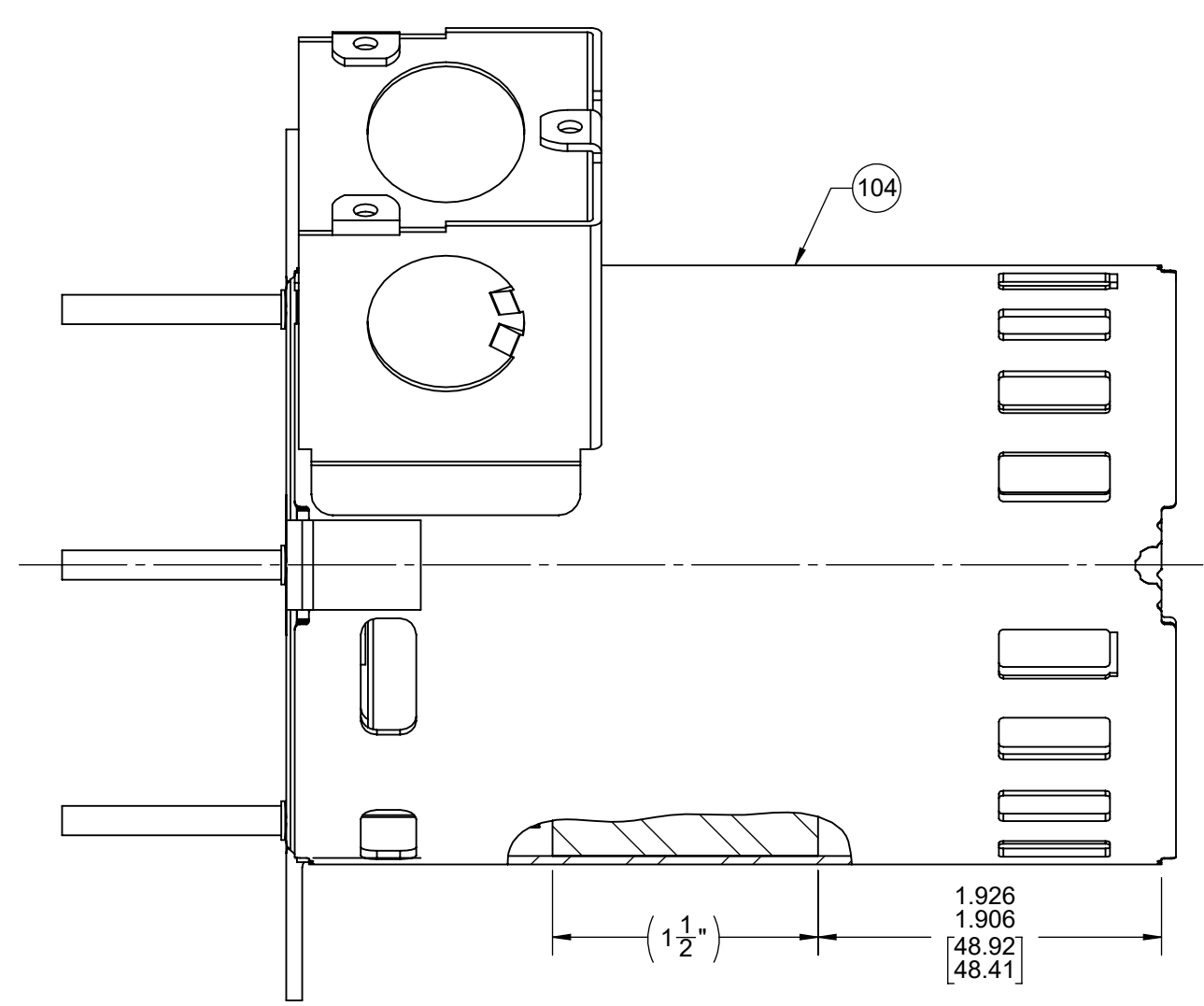
1

NOTES:

1. STAKE STATOR TO MAIN FRAME PER 88830264.
2. MAXIMUM TORQUE REQUIRED TO TURN MOTOR SHAFT IS 3/8 INCH-OUNCE.
3. ASSEMBLE SPRING BETWEEN WASHER AND BEARING ON BACK END, WITH SPRING FINGERS TOWARD BEARING.
4. ASSEMBLE BALL BEARINGS TO BEARING RETAINERS PER 88834419.
5. RECUT BLUE LEADS TO 7.00 / 5.00 [177.8 / 127.0], RESTRIP TO .22 ±.06 [5.6 ± 1.5] AND ATTACH FLAG TERMINALS.
6. RECUT RED AND BROWN LEADS TO 4.00 / 3.00 [101.6 / 76.2], RESTRIP TO .25 ± .06 [6.4 ± 1.5] AND ATTACH PIN TERMINALS AND TERMINAL HSG.
7. RECUT WHITE AND YELLOW LEADS TO 4.00 / 3.00 [101.6 / 76.2], RESTRIP TO .25 ± .06 [6.4 ± 1.5] AND ATTACH SOCKET TERMINALS AND TERMINAL HOUSING.
8. SWITCH LEADS MUST MEET PULL TEST PER 88834274.
9. ATTACHED TERMINALS MUST MEET SPECIFICATIONS PER 88834229.
10. ASSEMBLE LOCKWASHER BETWEEN CAPACITOR BRACKET AND SWITCH COVER.

FRONT END

BACK END



SWITCH INSTRUCTIONS

1. ASSEMBLE SWITCH AND ACTUATOR PER 88834261.
2. PRESS ACTUATOR ASSEMBLY AND THIMBLE ON SHAFT SO THAT TOP OF METAL ACTUATOR PLATE .568/.548 [14.43/13.92] FROM END OF SHAFT.
3. SWITCH MUST BE ADJUSTED TO OBTAIN .035/.025 [.89 / .64] AIR GAP BETWEEN THIMBLE AND SWITCH BUTTON IN FULL OPERATING POSITION.
4. SWITCH MUST MAKE CONTACT BEFORE 1800-2500 RPM AS SPEED INCREASES AND BREAK 50-500 RPM BELOW ACTUAL MAKE.
5. SWITCH MECHANISM TO GIVE QUIET OPERATION ABOVE 2500 RPM.
6. NO SLACK ALLOWED INSIDE SWITCH COVER WHEN ASSEMBLING HEYCO.

PACKING SPECIFICATIONS

1. PACK PER 8883 4200. 1 PER CARTON, 18 PER LAYER, 108 PER PALLET.
2. PLACE A FOAM RING ON BACK END OF MOTOR, PLACE MOTOR IN CARTON, SHAFT END UP AND CONDUIT BOX TOWARD PRINTED SIDE OF CARTON.
3. PLACE A FOAM RING OVER EVERY BRACKET AND SLIDE INTO CARTON. PLACE TUBE FILLER OVER SHAFT, CLOSE FLAPS AND TAPE.
4. PLACE ONE FLAT PAD BETWEEN EACH LAYER. TRIM FLAT PADS SO THEY DO NOT EXTEND PAST OUTER EDGE OF CARTONS.
5. CARTON LABELS MUST ALL FACE ONE DIRECTION TOWARD THE OPEN END OF THE PALLET. SEE 8883 4408
6. NO PACKAGING TAPE ALLOWED ON CARTON LABEL.

DRAWING REVISION AL	REVISION BY SDM	REV DATE/© DATE 5/2/2022	TOLERANCES (EXCEPT AS NOTED): DEC. INCH mm ANGLE	DRAWN BY S.DALTON	Regal Beloit America, Inc.
REQUEST NUMBER ECR-0217395	APPROVED BY KBB	DATE 5/2/2022	.X ±0.1 [±3] ±1° .XX ±0.01 [±0.3] .XXX ±0.005 [±0.13] .XXXX ±0.0005 [±0.013]	DATE 12-13-2001	
REQUEST NUMBER DESCRIPTION CHANGE N/P FASCO LOGO TO FASCO TM			REMOVE BURRS & BREAK SHARP EDGES: .003/.015 [.08/.38] X 45° CORNER FILLETS: R.02 [5] MACHINED SURFACES: .125/ mm 3.2 INCH/mm	APPROVED BY	DESCRIPTION OUTLINE MOTOR ASSY
<small>COPYRIGHT (PER REVISION DATE) REGAL BELOIT AMERICA, INC. ALL RIGHTS RESERVED. PROPRIETARY AND CONFIDENTIAL INFORMATION - THIS DOCUMENT IS THE PROPERTY OF REGAL BELOIT AMERICA, INC. (OWNER) AND CONTAINS OWNER'S PROPRIETARY INFORMATION. ANY PERSON, CORPORATION OR OTHER FIRM RECEIVING IT IS DEEMED, BY RECEIVING IT, TO AGREE THAT IT, AND/OR ANY PART OF IT, SHALL NOT BE DISCLOSED TO ANY PERSON, CORPORATION OR OTHER ENTITY, DUPLICATED, AND/OR USED, EXCEPT AS EXPRESSLY APPROVED IN WRITING IN ADVANCE BY OWNER. THIS DOCUMENT SHALL BE RETURNED TO OWNER UPON REQUEST. IT MAY BE SUBJECT TO CERTAIN RESTRICTIONS UNDER APPLICABLE EXPORT CONTROL LAWS AND REGULATIONS.</small>			mm DIMENSIONS IN [BRACKETS] ARE FOR REFERENCE ONLY	REFERENCE	MATERIAL PROCESS/FINISH BLACK PAINT
THIRD ANGLE PROJECTION		SIZE C	DRAWING NUMBER 71621821	SHEET 2 OF 2	

4

3

2

1