

PRODUCT INFORMATION PACKET

FASCO®

Model No: D359

Catalog No: D359

OEM Replacement Motor, 1/20 HP, 1 Ph, 60 Hz, 115 V, 1550 RPM, 2 Speed, 3.3" Diameter, OAO



Regal and Fasco are trademarks of Regal Rexnord Corporation or one of its affiliated companies.

©2022 Regal Rexnord Corporation, All Rights Reserved. MC017097E

RegalRexnord



Nameplate Specifications

Output HP	1/20 Hp	Output KW	0.04 kW
Frequency	60 Hz	Voltage	115 V
Current	2.20 A	Speed	1550 rpm
Service Factor	1	Phase	1
Duty	Air Over	Insulation Class	B
Frame	3.3	Enclosure	Open Air Over
Thermal Protection	Thermally Protected	Ambient Temperature	40 °C
UL	Recognized	CSA	N
CE	N	Number of Speeds	2

Technical Specifications

Electrical Type	Shaded Pole	Starting Method	Across The Line
Poles	4	Rotation	Counterclockwise Lead End
Mounting	Extended Studs	Drive End Bearing	Sleeve
Opp Drive End Bearing	Sleeve	Frame Material	Steel
Shaft Type	Flat	Overall Length	11.27 in
Frame Length	2.94 in	Shaft Diameter	0.313 in
Shaft Extension	4 in		
Connection Drawing	SEE OUTLINE	Outline Drawing	71732158-S01

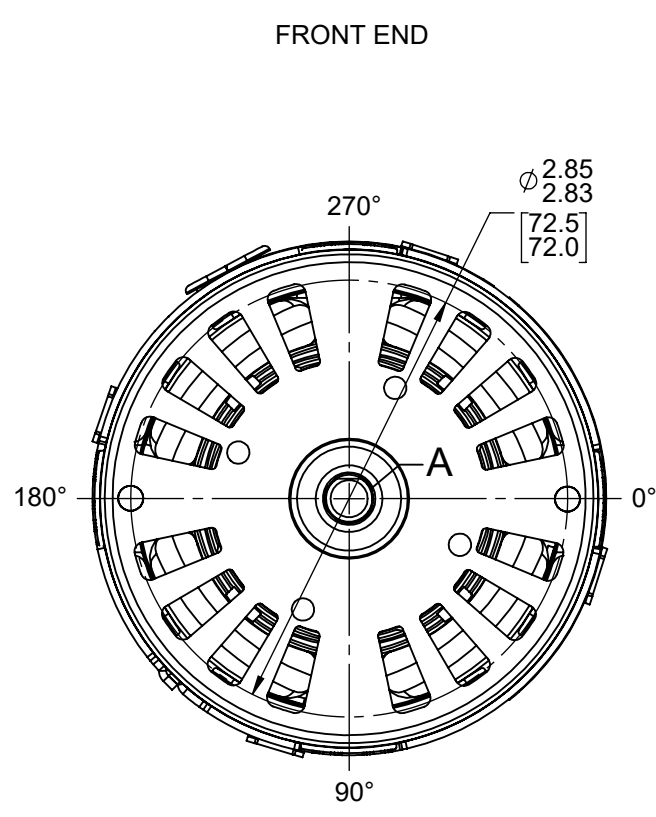
This is an uncontrolled document once printed or downloaded and is subject to change without notice. Date Created:11/29/2022

4

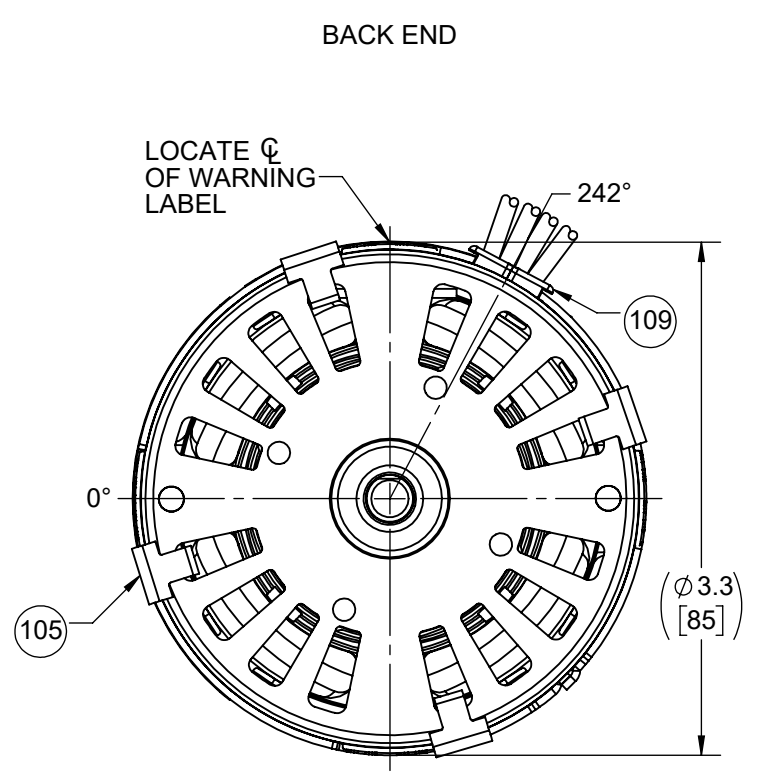
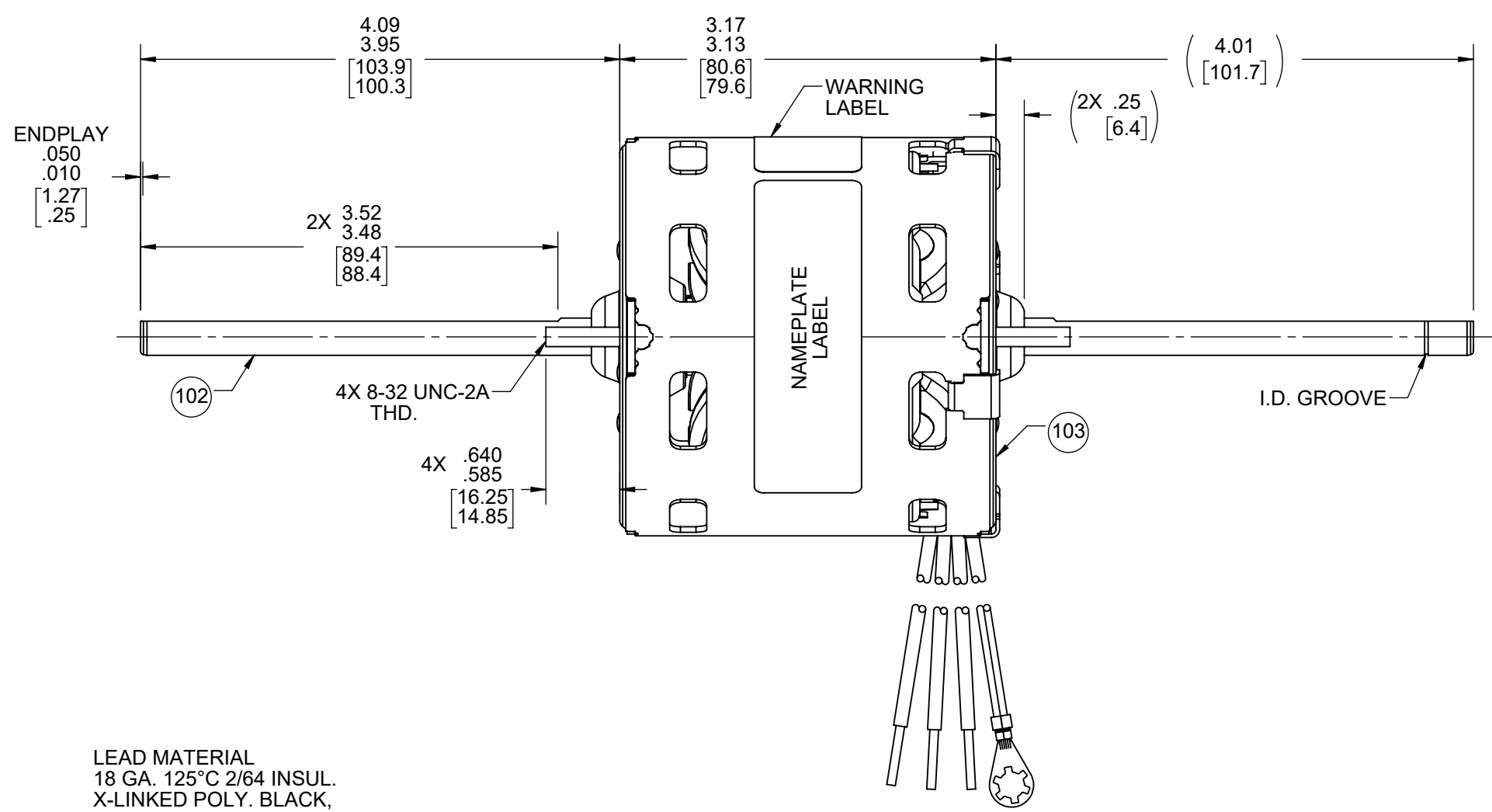
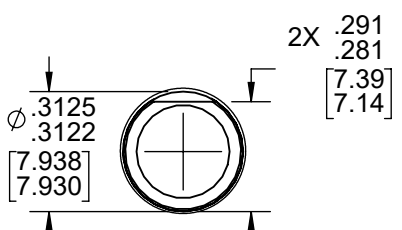
3

2

1



ROTATION



LEAD MATERIAL
18 GA. 125°C 2/64 INSUL.
X-LINKED POLY. BLACK,
RED, AND WHITE
13.00/11.00 [330.2/279.4]
.56/.44 [14.2/11.2] STRIP

GROUND LEAD MATERIAL
GRN/YEL
13.00/11.00 [330.2/279.4]
W/ RING TERMINAL
AMP 350436-2

- NOTES:
1. MOTOR HAS 416 SS SHAFT.
2. NO PACKAGING TAPE OVER CARTON LABEL.

61305568

00464537

00469078

SAFETY WARNING
This motor must be grounded in accordance with local or national electrical codes to prevent possible injury due to electrical shock



AVERTISSEMENT DE SÉCURITÉ
Ce moteur doit être fondée sur conformément à la réglementation locale ou national électrique codes pour prévenir d'éventuelles blessures en raison de choc électrique

FASCO™
Assembled In Mexico
No. 71732158 TYPE U73B1 T.P. AO
115 V 60 Hz Class B
2.2 A 1550 RPM 1/20 HP
Model D359 E40513
Two-Speed Rot. CCWLE
Max Amb: 40°C



Connection Diagram
Wht — Common
Blk — High
Red — Low
Grn/Yel — Grd

CUSTOMER:	FASCO DIST.	APPLICATION:					
CUSTOMER PN:	D359	MOTOR WEIGHT:					
	UP	ENVIRONMENT:	DAMP				
HORIZONTAL	MOTOR TYPE		REFERENCE SAMPLE				
	SHADED POLE						
	B 00	LA 73	FR 30				
		A V	S 05				
		C AR	E 6				
		B 3	A 0				
TYPICAL PERFORMANCE AT 115 VOLTS 60 HZ							
MOTOR SPEED	IDLE		LOADED		LOCKED		BREAK
	RPM	AMP	WATT	IN OZ	RPM	AMP	WATT
HIGH	1750	2.04	119	37.7	1550	2.19	162.5
							19.4
							3.13
							238.6
							47.3
LOW	1750	1.13	67.3	28.5	1250	1.54	117.8
							12.5
							1.84
							135.3
							29.1


DRAWING REVISION CA	REVISION BY SDM	REV DATE/DATE 9/20/2022	TOLERANCES (EXCEPT AS NOTED): DEC. INCH mm ANGLE .X ±0.1 [±3] ±1° .XX ±0.01 [±0.3] .XXX ±0.005 [±0.13] .XXX ±0.0005 [±0.013]	DRAWN BY SDM	Regal Rexnord Regal Beloit America, Inc.
REQUEST NUMBER ECR-0220803	APPROVED BY MLS	DATE 9/20/2022	REMOVE BURRS & BREAK SHARP EDGES: .003/.015 [0.08/.38] X 45° CORNER FILLETS: R.02 [5] MACHINED SURFACES: .125/ mm 3.2 mm DIMENSIONS IN [BRACKETS] INCH ARE FOR REFERENCE ONLY	DATE 9/20/2022	
REQUEST NUMBER DESCRIPTION REMOVE NAMEPLATE "Fasco Industries, Inc."			DESCRIPTION OUTLINE MOTOR ASSY	APPROVED BY MLS	MATERIAL PROCESS/FINISH BLACK
THIRD ANGLE PROJECTION			SIZE C	DRAWING NUMBER 71732158	
				SHEET 1 OF 2	

4

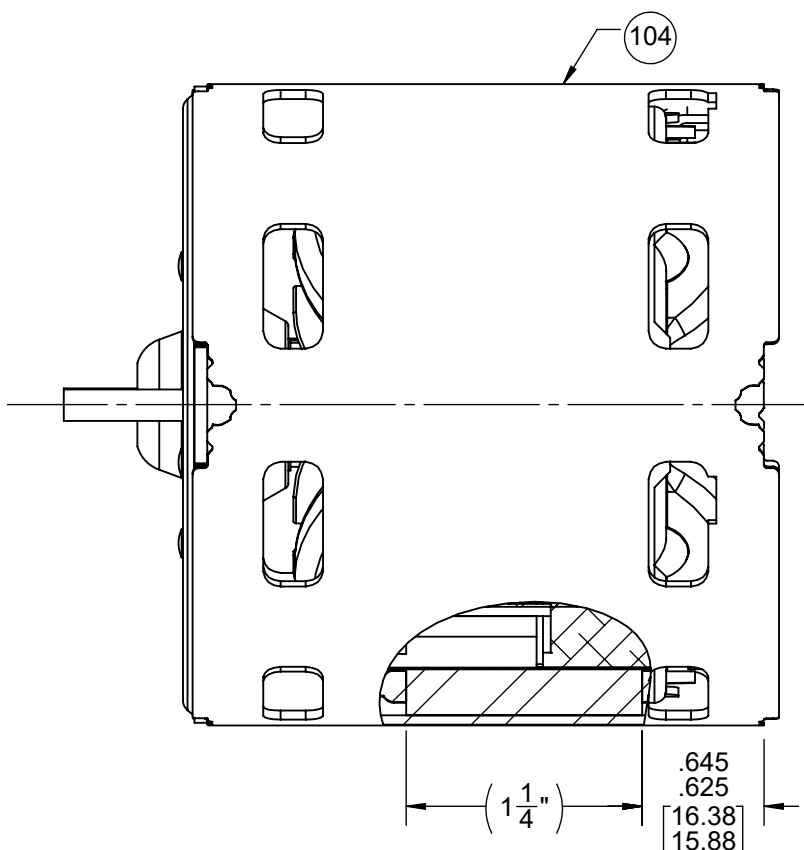
3

2

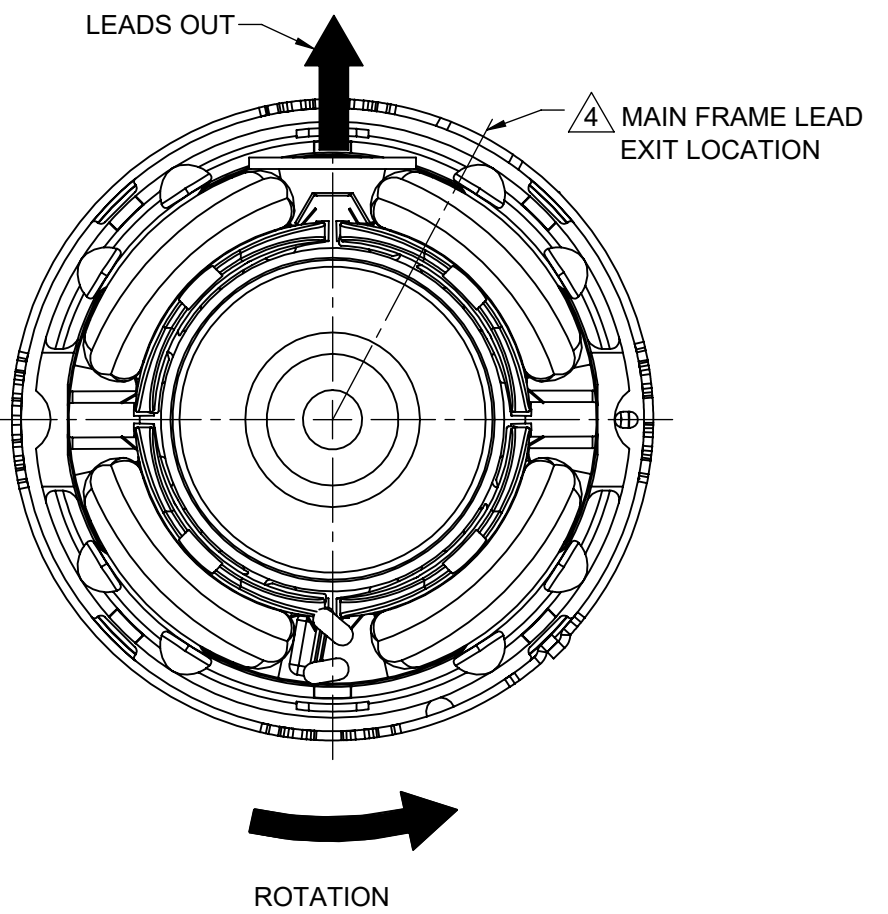
1

- NOTES:
1. STAKE STATOR TO MAIN FRAME PER 88830264.
 2. MAXIMUM TORQUE REQUIRED TO TURN MOTOR SHAFT IS 3/8 INCH-OUNCE.
 3. MAKE-UP WASHERS ARE TO BE ADDED OR DELETED TO ACHIEVE REQUIRED ENDPLAY.
 4.  PRESS STATOR IN MAIN FRAME SO THAT LEADS ARE LOCATED 28° FROM MAIN FRAME LEAD EXIT.

FRONT END


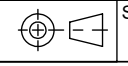


BACK END



PACKING SPECIFICATIONS

1. PACK 1 PER CONTAINER, 18 CONTAINERS PER LAYER, 6 LAYERS PER PALLET, 108 MAX. PER PALLET, PER 88834200.
2. PLACE FILLER TUBES OVER EACH SHAFT EXTENSION AND PLACE IN CONTAINER.
3. PLACE (1) FLAT PAD ON PALLET, (1) BETWEEN EACH LAYER AND (1) ON TOP OF PALLET LOAD.
4. CARTON LABELS MUST ALL FACE ONE DIRECTION TOWARD THE OPEN END OF THE PALLET. SEE 88834408.

DRAWING REVISION CA	REVISION BY SDM	REV DATE/© DATE 9/20/2022	TOLERANCES (EXCEPT AS NOTED): DEC. INCH mm ANGLE	DRAWN BY SDM	 Regal Beloit America, Inc.
REQUEST NUMBER ECR-0220803	APPROVED BY MLS	DATE 9/20/2022	.X ±0.1 [±3] ±1° .XX ±0.01 [±3] .XXX ±0.005 [±0.13] .XXXX ±0.0005 [±0.013]	DATE 9/20/2022	
REQUEST NUMBER DESCRIPTION REMOVE NAMEPLATE "Fasco Industries, Inc."			REMOVE BURRS & BREAK SHARP EDGES: .003/.015 [.08/.38] X 45° CORNER FILLETS: R.02 [5] MACHINED SURFACES: .125/ mm 3.2/ INCH mm	APPROVED BY MLS	DESCRIPTION OUTLINE MOTOR ASSY
COPYRIGHT (PER REVISION DATE) REGAL BELOIT AMERICA, INC. ALL RIGHTS RESERVED. PROPRIETARY AND CONFIDENTIAL INFORMATION - THIS DOCUMENT IS THE PROPERTY OF REGAL BELOIT AMERICA, INC. (OWNER) AND CONTAINS OWNER'S PROPRIETARY INFORMATION. ANY PERSON, CORPORATION OR OTHER FIRM RECEIVING IT IS DEEMED, BY RECEIVING IT, TO AGREE THAT IT, AND/OR ANY PART OF IT, SHALL NOT BE DISCLOSED TO ANY PERSON, CORPORATION OR OTHER ENTITY, DUPLICATED, AND/OR USED, EXCEPT AS EXPRESSLY APPROVED IN WRITING IN ADVANCE BY OWNER. THIS DOCUMENT SHALL BE RETURNED TO OWNER UPON REQUEST. IT MAY BE SUBJECT TO CERTAIN RESTRICTIONS UNDER APPLICABLE EXPORT CONTROL LAWS AND REGULATIONS.			mm DIMENSIONS IN [BRACKETS] ARE FOR REFERENCE ONLY	DATE 9/20/2022	MATERIAL
			THIRD ANGLE PROJECTION 	REFERENCE	PROCESS/FINISH BLACK
			SIZE C	DRAWING NUMBER 71732158	SHEET 2 OF 2

4

3

2

1