

# PRODUCT INFORMATION PACKET

FASCO®

Model No: D326  
Catalog No: D326

Fan and Blower Motor, 1/10-1/20-1/25 HP, 1 Ph, 60 Hz, 115 V, 1550 RPM, 3 Speed, 3.3" Diameter, OAO



Regal and Fasco are trademarks of Regal Rexnord Corporation or one of its affiliated companies.  
©2023 Regal Rexnord Corporation, All Rights Reserved. MC017097E

RegalRexnord



**Nameplate Specifications**

Phase	1	Output HP	1/10-1/20-1/25 Hp
Output KW	0.07 kW	Voltage	115 V
Speed	1550 rpm	Service Factor	1
Frame	3.3	Enclosure	Open Air Over
Thermal Protection	Thermally Protected	Ambient Temperature	40 °C
Frequency	60 Hz	Current	1.90/1.80/1.50 A
Duty	Air Over	Insulation Class	B
UL	Recognized	CSA	Y
CE	N	Number of Speeds	3

**Technical Specifications**

Electrical Type	Permanent Split Capacitor	Starting Method	Across The Line
Poles	4	Rotation	Reversible
Mounting	Extended Studs	Drive End Bearing	Ball
Opp Drive End Bearing	Ball	Frame Material	Steel
Shaft Type	Flat	Overall Length	12.70 in
Frame Length	3.95 in	Shaft Diameter	0.312 in
Shaft Extension	5.55 in		
Outline Drawing	71902363	Connection Drawing	00469303

This is an uncontrolled document once printed or downloaded and is subject to change without notice. Date Created:08/14/2023

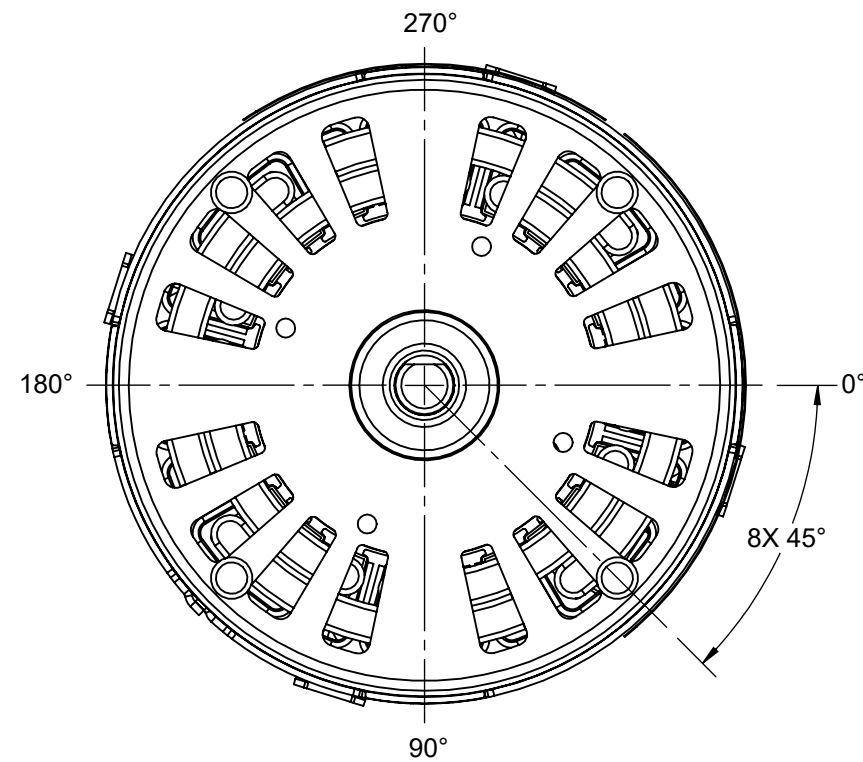
4

3

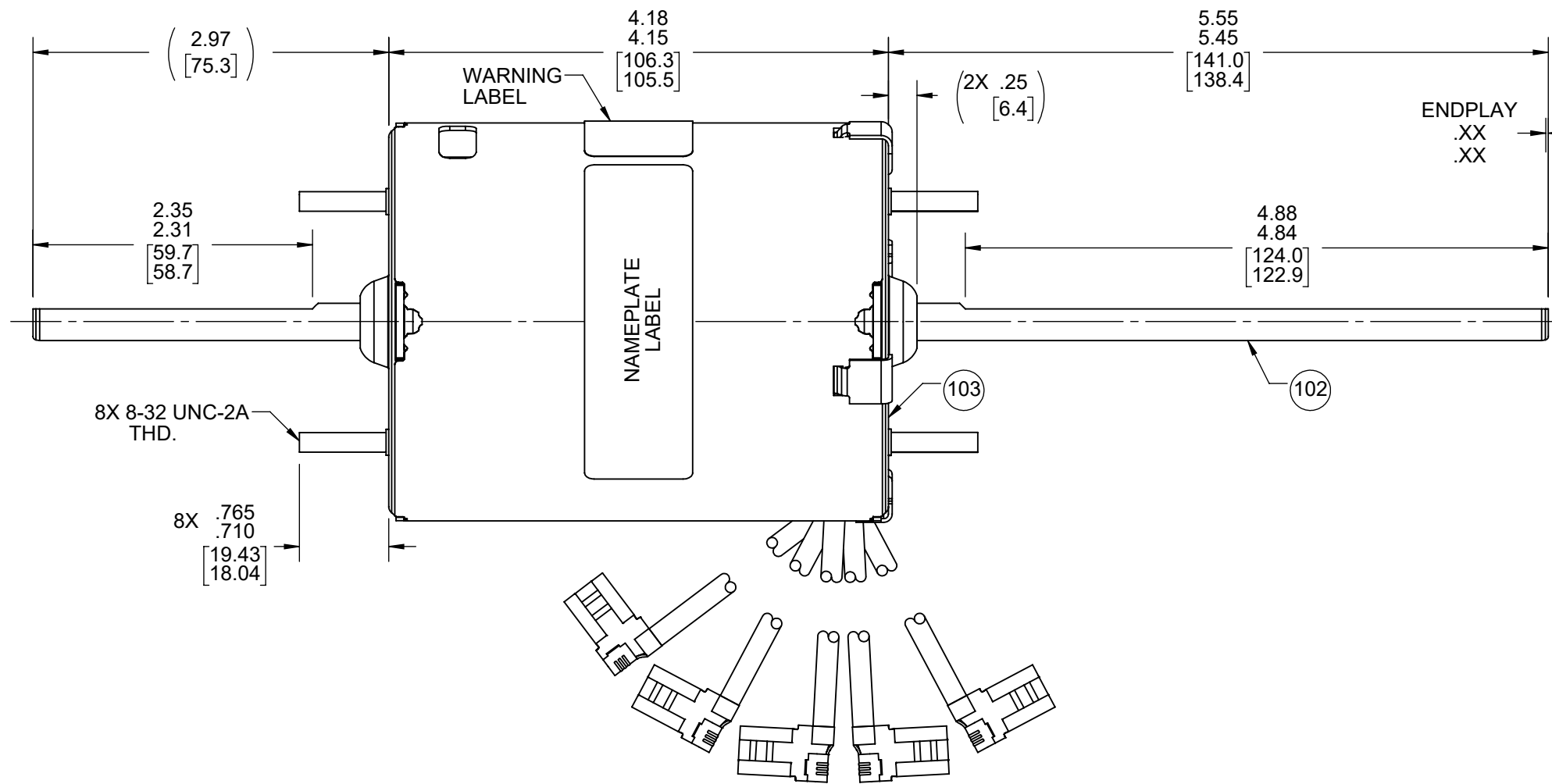
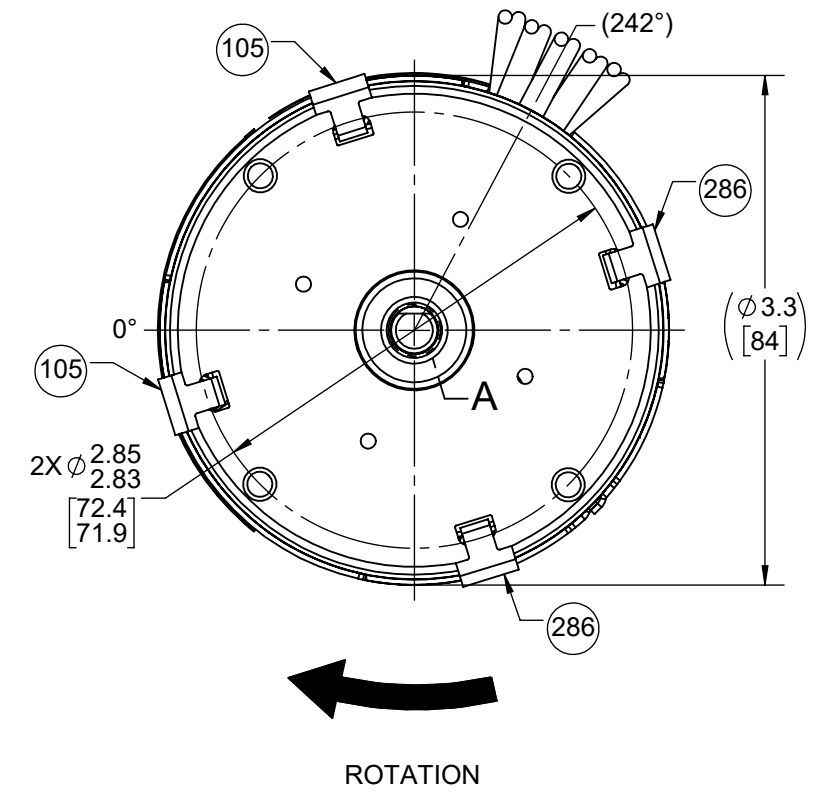
2

1

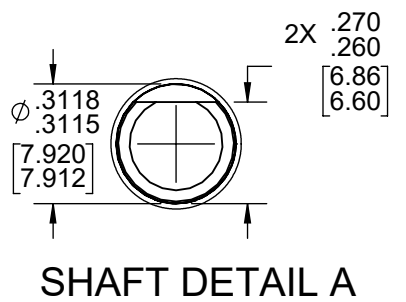
BACK END



FRONT END



LEAD MATERIAL  
 18 GA. 125°C 4/64 INSUL.  
 EPDM, WHITE, BLACK,  
 RED, BLUE, AND BROWN  
 20.00/18.00 [508.0/457.2]  
 W/ FFLAG TERMINALS  
 AMP 42742-2



NOTES:  
 1. NO PACKAGING TAPE OVER CARTON LABEL.

61305568

00464072

0046XXXX

**SAFETY WARNING**  
 This motor must be grounded in accordance with local or national electrical codes to prevent possible injury due to electrical shock



**AVERTISSEMENT DE SÉCURITÉ**  
 Ce moteur doit être fondée sur conformément à la réglementation locale ou nationale électrique codes pour prévenir d'éventuelles blessures en raison de choc électrique

**FASCO™**

Assembled in Mexico  
 No. 71902363  
 115 V  
 Model D326  
 1.9/1.8/1.5 A  
 1/10-1/20-1/25 HP



TYPE U90B1 T.P. AO  
 60 Hz Class B  
 1550 RPM

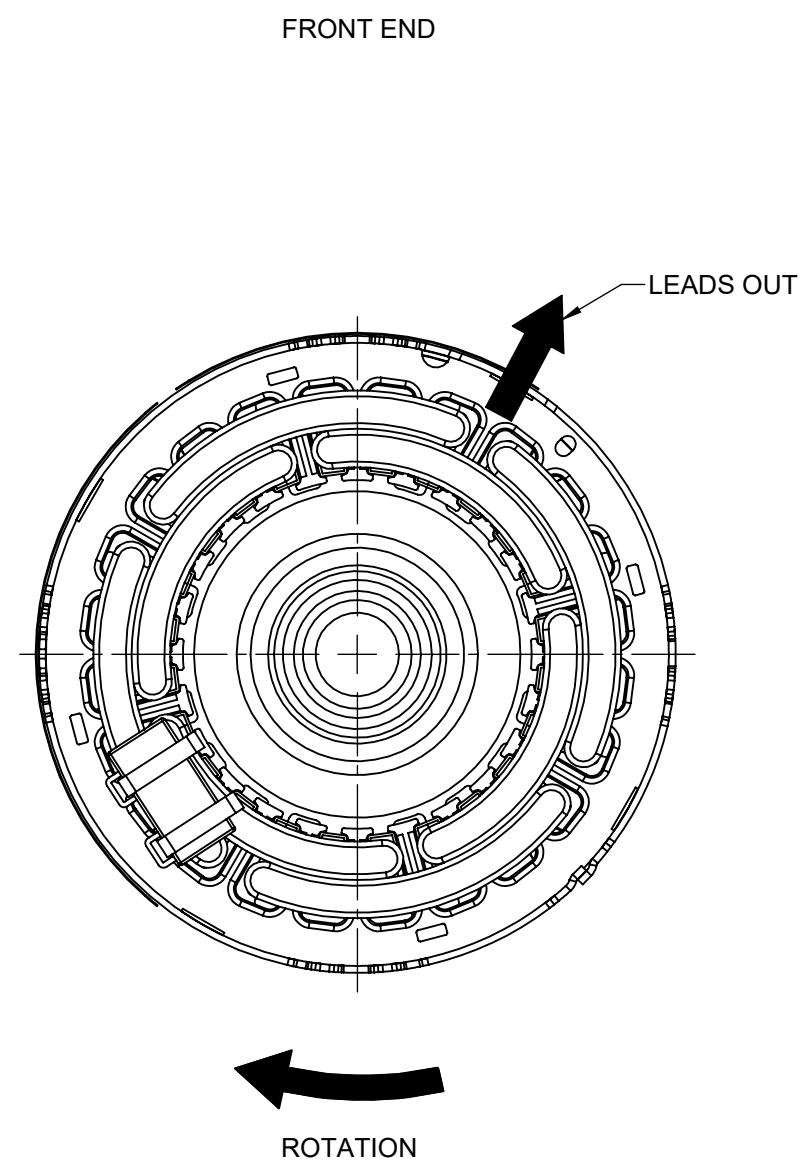
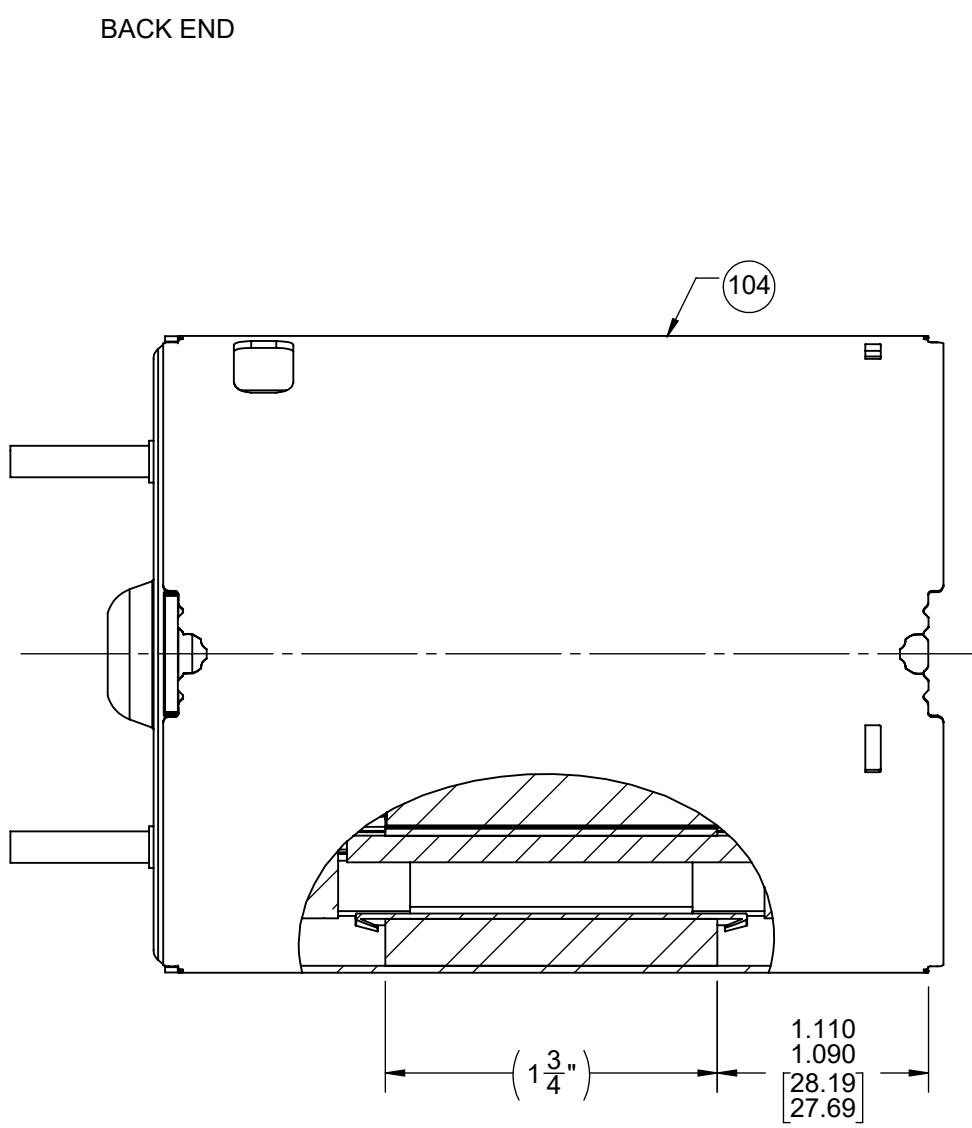
Connection Diagram  
 Wht Common  
 Brn  
 Blk High  
 Blu Med  
 Red Low  
 4 MFD/370 VAC

CUSTOMER:	FASCO DIST.	APPLICATION:										
CUSTOMER PN:	D326	MOTOR WEIGHT:	4.82 LBS.									
		ENVIRONMENT:	DRY									
HORIZONTAL  UP DOWN	MOTOR TYPE					REFERENCE SAMPLE						
	P.S.C.											
	B	LA	FR	A	S	C	E	B	A			
	00	90	30	V	07	BU	7	0	0			
TYPICAL PERFORMANCE AT 115 VOLTS 60 HZ												
	IDLE			LOADED				LOCKED			BREAK	
MOTOR SPEED	RPM	AMP	WATT	IN OZ	RPM	AMP	WATT	IN OZ	AMP	WATT	IN OZ	
HIGH	1791	1.07	69	80.0	1550	1.63	167	28.5	3.09	311	96.5	
MED	1788	.64	46	56.0	1200	1.60	173	17.7	2.15	219	63.5	
LOW	1785	.46	33	37.3	1000	1.45	148	13.2	1.64	163	45.4	

DRAWING REVISION FB	REVISION BY SDM	REV DATE/© DATE 8/1/2023	TOLERANCES (EXCEPT AS NOTED): DEC. INCH mm ANGLE .X ±0.1 [±3] ±1° .XX ±0.01 [±0.3] .XXX ±0.005 [±0.13] .XXXX ±0.0005 [±0.013]	DRAWN BY S.M.MAGGARD	Regal Rexnord Regal Beloit America, Inc.
REQUEST NUMBER ECR-0227167	APPROVED BY KKM	DATE 8/1/2023	REMOVE BURRS & BREAK SHARP EDGES: .003/.015 [.08/.38] X 45° CORNER FILLETS: R.02 [5] MACHINED SURFACES: .125/ mm 3.2 INCH mm DIMENSIONS IN [BRACKETS] ARE FOR REFERENCE ONLY	DATE 09-06-2002	DESCRIPTION OUTLINE MOTOR ASSY
REQUEST NUMBER DESCRIPTION ATTACH MODEL TO PRINT				APPROVED BY	MATERIAL
COPYRIGHT (PER REVISION DATE) REGAL BELOIT AMERICA, INC. ALL RIGHTS RESERVED. PROPRIETARY AND CONFIDENTIAL INFORMATION - THIS DOCUMENT IS THE PROPERTY OF REGAL BELOIT AMERICA, INC. ("OWNER") AND CONTAINS OWNER'S PROPRIETARY INFORMATION. ANY PERSON, CORPORATION OR OTHER FIRM RECEIVING IT IS DEEMED, BY RECEIVING IT, TO AGREE THAT IT, AND/OR ANY PART OF IT, SHALL NOT BE DISCLOSED TO ANY PERSON, CORPORATION OR OTHER ENTITY, DUPLICATED, AND/OR USED, EXCEPT AS EXPRESSLY APPROVED IN WRITING IN ADVANCE BY OWNER. THIS DOCUMENT SHALL BE RETURNED TO OWNER UPON REQUEST. IT MAY BE SUBJECT TO CERTAIN RESTRICTIONS UNDER APPLICABLE EXPORT CONTROL LAWS AND REGULATIONS.				DATE	PROCESS/FINISH BLACK
				REFERENCE	DRAWING NUMBER 71902363
				THIRD ANGLE PROJECTION	SHEET 1 OF 2

NOTES:

- 1. STAKE STATOR TO MAIN FRAME PER 88830264.
- 2. MAXIMUM TORQUE REQUIRED TO TURN MOTOR SHAFT IS 3/8 INCH-OUNCE.
- 3. ASSEMBLE SPRING BETWEEN WASHER AND BEARING ON FRONT END, WITH SPRING FINGERS TOWARD BEARING.
- 4. ASSEMBLE BALL BEARINGS TO BEARING RETAINERS PER 88834419.



PACKING SPECIFICATIONS

- 1. PACK 1 PER CONTAINER, 18 CONTAINERS PER LAYER, 8 LAYERS PER PALLET, 144 MAX. PER PALLET, PER 88834200.
- 2. PLACE FILLER TUBES OVER SHAFT EXTENSIONS. PLACE MOTOR IN CONTAINER. CLOSE FLAPS AND TAPE. PLACE CARTON LABEL ON END OF CONTAINER. PLACE CONTAINER ON PALLET WITH LABEL END OUT AN VISIBLE FOR STORAGE.
- 3. PLACE ONE FLAT PAD ON PALLET, ONE BETWEEN EACH LAYER, AND ONE ON TOP.
- 4. CARTON LABELS MUST ALL FACE ONE DIRECTION TOWARD THE OPEN END OF THE PALLET. SEE 88834408.

DRAWING REVISION FB	REVISION BY SDM	REV DATE/© DATE 8/1/2023	TOLERANCES (EXCEPT AS NOTED):		DRAWN BY S.M.MAGGARD		Regal Beloit America, Inc.	
REQUEST NUMBER ECR-0227167	APPROVED BY KKM	DATE 8/1/2023	DEC.	INCH	mm			ANGLE
REQUEST NUMBER DESCRIPTION ATTACH MODEL TO PRINT			.X	±0.1	[±3]	±1°	APPROVED BY	DESCRIPTION OUTLINE MOTOR ASSY
COPYRIGHT (PER REVISION DATE) REGAL BELOIT AMERICA, INC. ALL RIGHTS RESERVED. PROPRIETARY AND CONFIDENTIAL INFORMATION - THIS DOCUMENT IS THE PROPERTY OF REGAL BELOIT AMERICA, INC. ("OWNER") AND CONTAINS OWNER'S PROPRIETARY INFORMATION. ANY PERSON, CORPORATION OR OTHER FIRM RECEIVING IT IS DEEMED, BY RECEIVING IT, TO AGREE THAT IT, AND/OR ANY PART OF IT, SHALL NOT BE DISCLOSED TO ANY PERSON, CORPORATION OR OTHER ENTITY, DUPLICATED, AND/OR USED, EXCEPT AS EXPRESSLY APPROVED IN WRITING IN ADVANCE BY OWNER. THIS DOCUMENT SHALL BE RETURNED TO OWNER UPON REQUEST. IT MAY BE SUBJECT TO CERTAIN RESTRICTIONS UNDER APPLICABLE EXPORT CONTROL LAWS AND REGULATIONS.			.XX	±0.01	[±0.3]		DATE	MATERIAL
			.XXX	±0.005	[±0.13]		APPROVED BY	PROCESS/FINISH BLACK
			.XXX	±0.005	[±0.13]		DATE	DRAWING NUMBER 71902363
			.XXXX	±0.0005	[±0.013]		REFERENCE	SHEET 2 OF 2
			REMOVE BURRS & BREAK SHARP EDGES: .003/.015 [.08/.38] X 45°		MACHINED SURFACES: .125/ mm 3.2		THIRD ANGLE PROJECTION	SIZE C
			CORNER FILLETS: R.02 [.5]		mm DIMENSIONS IN [BRACKETS] ARE FOR REFERENCE ONLY			