

PRODUCT INFORMATION PACKET

FASCO®

Model No: D316

Catalog No: D316

Fan and Blower Motor, 1/8-1/10 HP, 1 Ph, 60 Hz, 230 V, 1050 RPM, 2 Speed, 42 Frame, OAO



Regal and Fasco are trademarks of Regal Rexnord Corporation or one of its affiliated companies.

©2022 Regal Rexnord Corporation, All Rights Reserved. MC017097E

RegalRexnord



Nameplate Specifications

Output HP	1/8-1/10 Hp	Output KW	0.10 kW
Frequency	60 Hz	Voltage	230 V
Current	2.1-1.8 A A	Speed	1050 rpm
Service Factor	1	Phase	1
Duty	Air Over	Insulation Class	A
Frame	42	Enclosure	Open Air Over
Thermal Protection	Thermally Protected	Ambient Temperature	40 °C
UL	Recognized	CSA	Y
CE	N	Number of Speeds	2

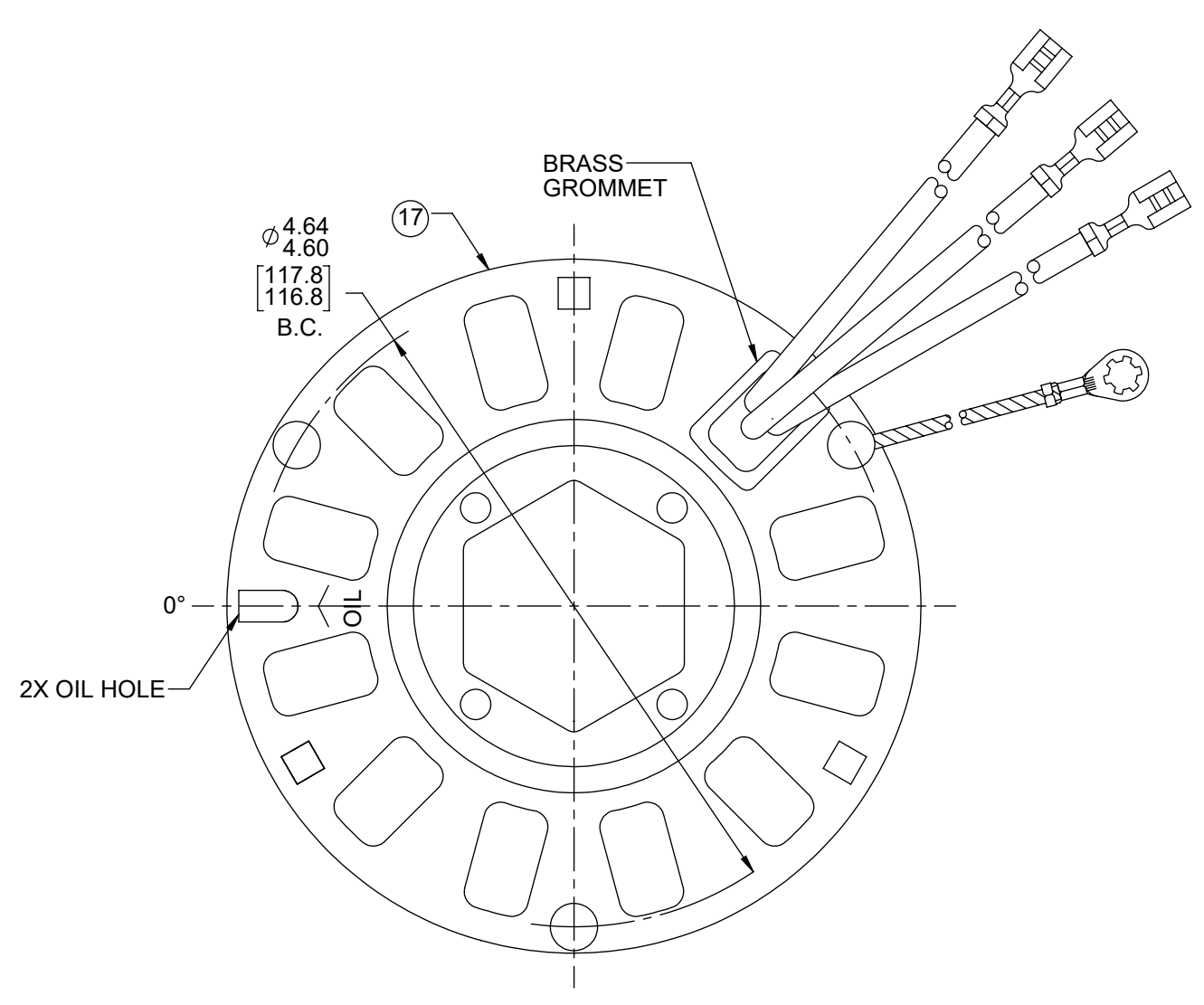
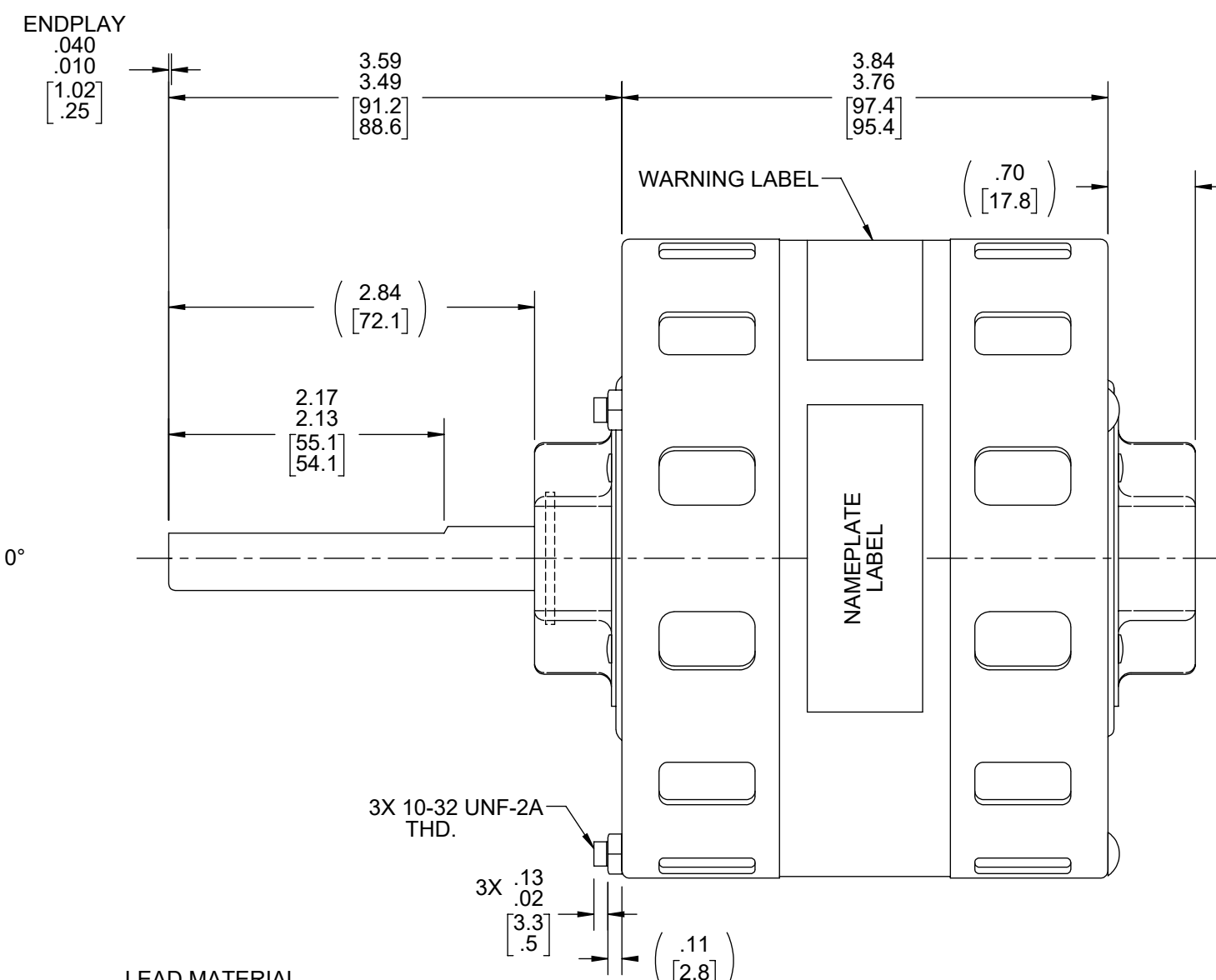
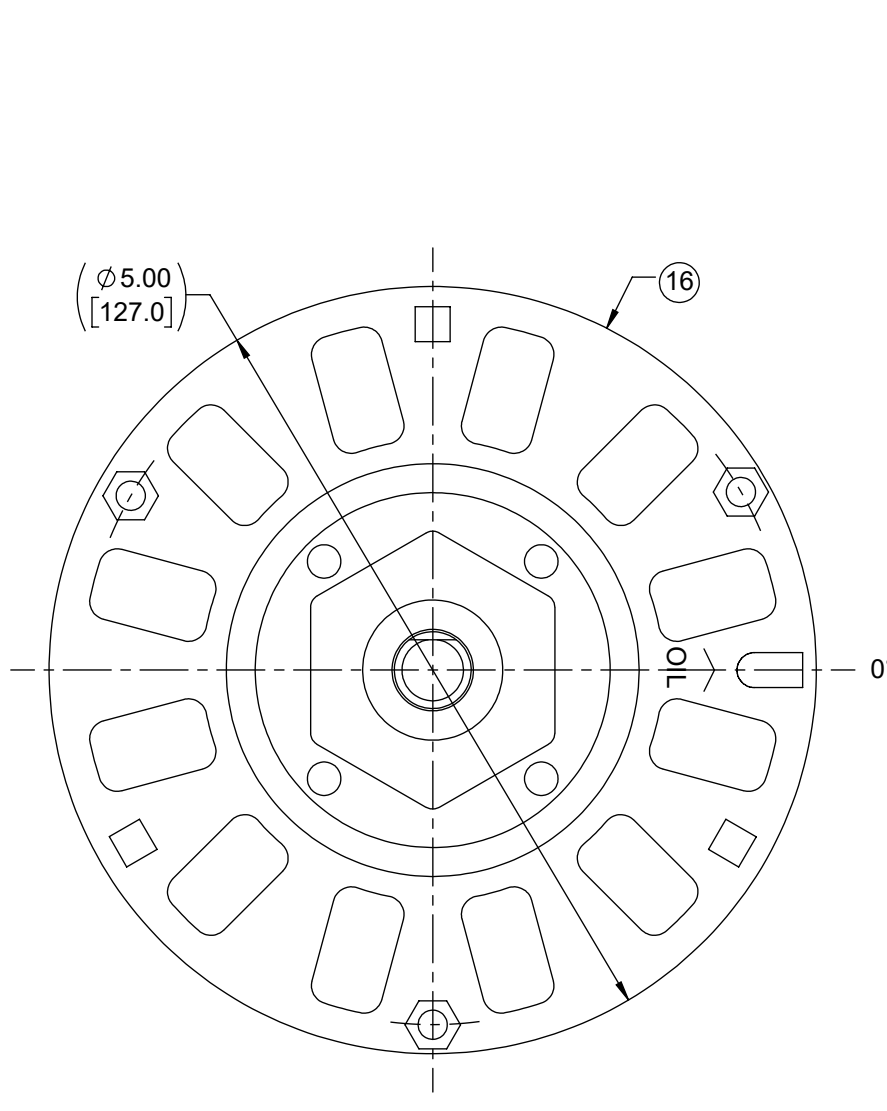
Technical Specifications

Electrical Type	Shaded Pole	Starting Method	Across The Line
Poles	6	Rotation	Clockwise Shaft End
Mounting	Hexagonal Hubs	Drive End Bearing	Sleeve
Opp Drive End Bearing	Sleeve	Frame Material	Na
Shaft Type	Flat	Overall Length	8.13 in
Shaft Diameter	0.500 in	Shaft Extension	3.55 in
Connection Drawing	SEE OUTLINE	Outline Drawing	71510189

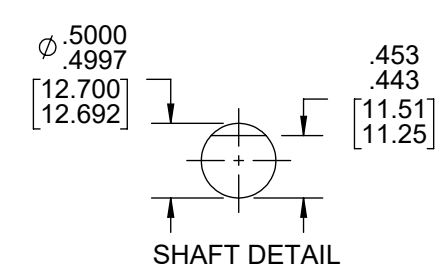
This is an uncontrolled document once printed or downloaded and is subject to change without notice. Date Created:11/29/2022

OPPOSITE LEAD END

LEAD END



ROTATION



LEAD MATERIAL
 18 GA. 125°C 4/64 INSUL.
 EDPM, WHITE, BLACK,
 AND RED
 19.00/17.00 [482.6/431.8]
 W/ FSPADE TERMS.
 AMP 42692-2

GROUND LEAD MATERIAL
 18 GA. 105°C 2/64 INSUL.
 THERMO, GRN/YEL
 7.00/6.00 [177.8/152.4]
 W/ RING TERM.
 AMP 350436-2

- NOTES:
1. THRU AIR SPACING BETWEEN WIRE AND METAL .10 [2.5] MIN.
 2. SHAFT IS BONDERIZED.
 3. FOR WASHER SET-UP, SEE CHART C6000279, DETAIL H".
 4. ROTOR FREENESS TO BE WITHIN 1 OZ.IN. TORQUE.
 5. TIE BOLT TORQUE TOLERANCE 7-12 IN.LBS.
 6. PLACE PAMPHLET, 61224579, IN CARTON WITH MOTOR.
 7. PACK 1 MOTOR PER CONTAINER, 32 MOTORS PER LAYER, 6 LAYERS PER PALLET, 192 MAX. PER PALLET.
 8. SEE PACKAGING MANUAL PAGE 2 FOR PACKAGING PROCEDURE.
 9. CENTER LABEL, 61196039, ON END OF CARTON.
 10. CARTON LABELS MUST ALL FACE ONE DIRECTION TOWARD THE OPEN END OF THE PALLET. SEE 88834408.
 11. NO PACKING TAPE OVER CARTON LABEL.
 12. SEE DRAWING 87856079 SHEET 1 FOR PALLET LAYOUT.

SAFETY WARNING
 This motor must be grounded in accordance with local or national electrical codes to prevent possible injury due to electrical shock

AVERTISSEMENT DE SÉCURITÉ
 Ce moteur doit être fondée sur conformément à la réglementation locale ou national électrique codes pour prévenir d'éventuelles blessures en raison de choc électrique

00464072

00464551

FASCO
 Assembled In Mexico
 No. 71510189 Type U51
 230 V 60 Hz
 2.1-1.8 A 1050 RPM
 Model D316
 Thermally Protected

AO LR6319 PH 1
 1/8-1/10 HP (2 SPD)

Connection Diagram
 White — Line
 Black-HI — Line
 Red-LO — Line

CUSTOMER:	FASCO DIST.	APPLICATION:			HI-POT TEST 2000 VOLTS MAX. LEAKAGE CURRENT 5mA	
CUSTOMER PN:	D316	MOTOR WEIGHT:	8 LBS.		PRODUCTION TEST AT IDLE 230 VOLTS 60 Hz	
		ENVIRONMENT:	DRY		MOTOR SPEED	
					AMP WATT	
					1.90 - 1.56 199.1 - 162.9 HIGH	
					1.64 - 1.34 170.5 - 139.5 LOW	
MOTOR TYPE SHADED POLE			REFERENCE SAMPLE			
B	LA	FR	A	S	C	E B A
00	51	10	V	06	EF	6 8 0
TYPICAL PERFORMANCE AT 230 VOLTS 60 HZ						
IDLE			LOADED		LOCKED	
MOTOR SPEED	RPM	AMP	WATT	IN OZ	RPM	AMP WATT IN OZ
HIGH	1178	1.73	181	125	1050	2.0 270 49 2.7 329 139
LOW	1178	1.49	155	107	1050	1.7 232 42 2.3 282 122

DRAWING REVISION YA	REVISION BY KKM	REV DATE/© DATE 7/19/2021	TOLERANCES (EXCEPT AS NOTED): DEC. INCH mm ANGLE	DRAWN BY SDM	DATE 6/28/2016	DESCRIPTION OUTLINE MOTOR ASSY
ECO ECR-0211069	APPROVED BY PLA	DATE 7/19/2021	.X ±0.1 [±3] .XX ±0.01 [±0.3] .XXX ±0.005 [±0.13] .XXXX ±0.0005 [±0.013]	APPROVED BY SED	DATE 6/28/2016	MATERIAL PROCESS/FINISH GRAY
REMOVE IND AND INC FROM LABEL			REMOVE BURRS & BREAK SHARP EDGES: .003/.015 [.08/.38] X 45° CORNER FILLETS: R.02 [.5] MACHINED SURFACES: ±.125/ mm 3.2 mm DIMENSIONS IN [BRACKETS] ARE FOR REFERENCE ONLY	THIRD ANGLE PROJECTION	SIZE C	DRAWING NUMBER 71510189
REGAL Beloit America, Inc.					SHEET 1 OF 1	