

PRODUCT INFORMATION PACKET

FASCO®

Model No: D247

Catalog No: D247

Fan Coil & Air Conditioner Motor, 1/6-1/8-1/12 HP, 1 Ph, 60 Hz, 230 V, 1550 RPM, 3 Speed, 42 Frame,
OAO



Regal and Fasco are trademarks of Regal Rexnord Corporation or one of its affiliated companies.

©2023 Regal Rexnord Corporation, All Rights Reserved. MC017097E

RegalRexnord



Nameplate Specifications

Phase	1	Output HP	1/6-1/8-1/12 Hp
Output KW	0.13 kW	Voltage	230 V
Speed	1550 rpm	Service Factor	1
Frame	42	Enclosure	Open Air Over
Thermal Protection	Automatic	Efficiency	44 %
Ambient Temperature	40 °C	Frequency	60 Hz
Current	1.0/0.7/0.5 A	Duty	Continuous
Insulation Class	B	UL	Recognized
CSA	Y	CE	N
Number of Speeds	3		

Technical Specifications

Electrical Type	Permanent Split Capacitor	Starting Method	Across The Line
Poles	4	Rotation	Counterclockwise Lead End
Mounting	Resilient Rings	Drive End Bearing	Sleeve
Opp Drive End Bearing	Sleeve	Frame Material	Na
Shaft Type	Flat	Overall Length	19.82 in
Shaft Diameter	0.500 in	Shaft Extension	8.00 in
Connection Drawing	SEE OUTLINE	Outline Drawing	7184000711_S001

This is an uncontrolled document once printed or downloaded and is subject to change without notice. Date Created:09/11/2023

- NOTES
1. THRU AIR SPACING BETWEEN WIRE AND METAL .094 MIN.
 2. TIE BOLT TORQUE TOLERANCE 7-12 IN. LBS.
 3. FOR WASHER SET-UP, SEE CHART C600 0279, DETAIL "A".
 4. SALES TO SPECIFY ON P.O WHICH PACK TO USE.

ECO	REV.	DATE	SPEC/CHECK
642008	11	4-26-11	LDC/LDC
638541	8	08-19-08	GAE/GAE
639151	9	3-5-09	MKR/MKR
641431	10	8-10-10	MKR/MKR

71xx xxxx,R

A. SEE PACKAGING MANUAL PAGE 2 FOR PACKAGING PROCEDURES.

1 MOTOR/CARTON;
10 MOTORS/LAYER;
7 LAYERS/PALLET;
70 MOTORS/PALLET.

B. SEE DRAWING 8785 6079 SH. 7 FOR PALLET LAYOUT.

C. CENTER LABEL, 6119 6124, ON END OF CARTON.

D. PLACE PAMPHLET, 6122 4579, IN CARTON WITH MOTOR.

71xx xxxxC

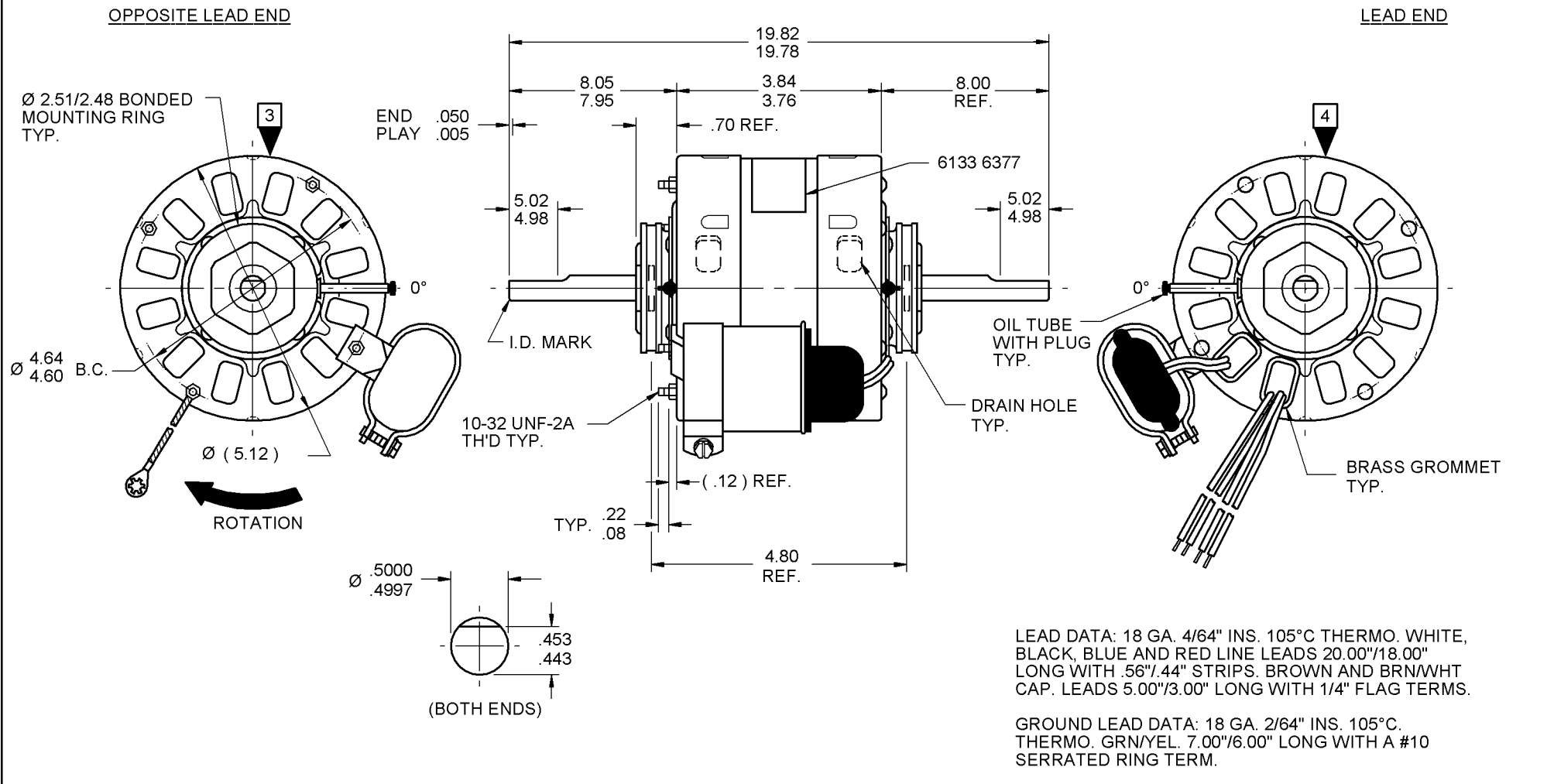
71xx xxxxZ

If Printed, this is an Uncontrolled Document

PRODUCTION TEST AT IDLE 230 VOLTS 60 HZ		MOTOR SPEED	PERFORMANCE TEST 230 VOLTS 60 HZ 1 PH 1/6 HP CAP. 4 MFD 370 VAC											
AMP	WATT		IDLE			LOADED				LOCKED			BREAK	
			RPM	AMP	WATT	OZ/IN	RPM	AMP	WATT	OZ/IN	AMP	WATT	OZ/IN	
.64	— .52	117.7 — 96.3	HIGH	1780	.58	107	111	1550	.93	215	54	1.41	307	121
.45	— .37	86.9 — 71.1	MED.	1778	.41	79	75	1550	.65	149	37	.98	205	81
.34	— .28	66.0 — 54.0	LOW	1778	.31	60	55	1550	.47	109	27	.74	150	61

HI-POT TEST 2000 VOLTS
MAX LEAKAGE CURRENT 5 mA

7184 0007 MA



7184 0007 = MADE IN U.S.A.
7184 0007R = ASSEMBLED IN MEXICO

FASCO FASCO INDUSTRIES INC. MOTOR DIVISION

THERMALLY PROTECTED

CONNECTION DIAGRAM

BRN — BRN/WHT — CAPACITOR
WH — LINE
BLK-HI — LINE
BLU-MED — LINE
RED-LO — LINE

MODEL D247

V. 230 HZ 50/60 PH 1 AO ROT
HP 1/6-1/8-1/12 CAP 4 MFD 370 VAC
AMP 1.0-.7-.5 NO. 7184-0007 40°C AMB
TYPE U184B1 RPM 1550 (3 SPD) INS CL B

SAFETY WARNING
THIS MOTOR MUST BE GROUNDED IN ACCORDANCE WITH LOCAL OR NATIONAL ELECTRICAL CODES TO PREVENT POSSIBLE INJURY DUE TO ELECTRICAL SHOCK

DATE/BAR CODE AREA PER 8882 6003

6133 6377,R REV. 5

LOCATE \odot OF NAMEPLATE ON \odot OF STATOR TO READ RIGHT FROM LEAD END OF MOTOR CENTER AT 75° CWLE.
SIZE 3.50 X 1.00

SPECIAL INSTRUCTIONS: SHAFT IS BONDERIZED. FLATS TO BE PARALEL WITHIN $\pm 20^\circ$.
PAMPHLET PACKED WITH MOTOR.

MOTORS PACKED MAX. PER SKID: ___ PALLET PACK, 70 CARTON PACK, ___ TRAY PACK.

CUSTOMER: FASCO DISTRIBUTING CO. PROPRIETARY: DO NOT DUPLICATE OR DISCLOSE TO THIRD PARTIES WITHOUT WRITTEN PERMISSION OF FASCO IND. INC., ELDON MO.

FASCO INDUSTRIES, INC. MOTOR DIVISION ELDON PLANT

PART NUMBER: D247

APPLICATION: DIST. SALES
FINISH COLOR: GRAY
MOTOR WEIGHT: 10.24 LBS.
ENVIRONMENT: DRY
INSULATION CLASS: B

MOTOR TYPE		MOTOR NUMBER		REV.					
P.S.C.		7184 0007		11					
B	LA	FR	A	S	C	E	B	A	R
00	84	11	V	06	AC	7	8	0	