

PRODUCT INFORMATION PACKET

FASCO®

Model No: D119
Catalog No: D119

Fan and Blower Motor, 1/11-1/25-1/70 HP, 1 Ph, 60 Hz, 115 V, 1500 RPM, 3 Speed, 4.4" Diameter, OAO



Regal and Fasco are trademarks of Regal Rexnord Corporation or one of its affiliated companies.
©2022 Regal Rexnord Corporation, All Rights Reserved. MC017097E

RegalRexnord



Nameplate Specifications

Output HP	1/11-1/25-1/70 Hp	Output KW	0.07 kW
Frequency	60 Hz	Voltage	115 V
Current	2.9-1.5-1.0 A	Speed	1500 rpm
Service Factor	1	Phase	1
Duty	Air Over	Insulation Class	B
Frame	4.4	Enclosure	Open Air Over
Thermal Protection	Thermally Protected	Ambient Temperature	40 °C
UL	Recognized	CSA	Y
CE	N	Number of Speeds	3

Technical Specifications

Electrical Type	Shaded Pole	Starting Method	Across The Line
Poles	4	Rotation	Counterclockwise Shaft End
Mounting	Extended Studs	Drive End Bearing	Ball
Opp Drive End Bearing	Ball	Frame Material	Rolled Steel
Shaft Type	Flat	Overall Length	6.36 in
Frame Length	3.38 in	Shaft Diameter	0.500 in
Shaft Extension	2.6 in		
Outline Drawing	71090126	Connection Drawing	SEE OUTLINE

This is an uncontrolled document once printed or downloaded and is subject to change without notice. Date Created:11/29/2022

4

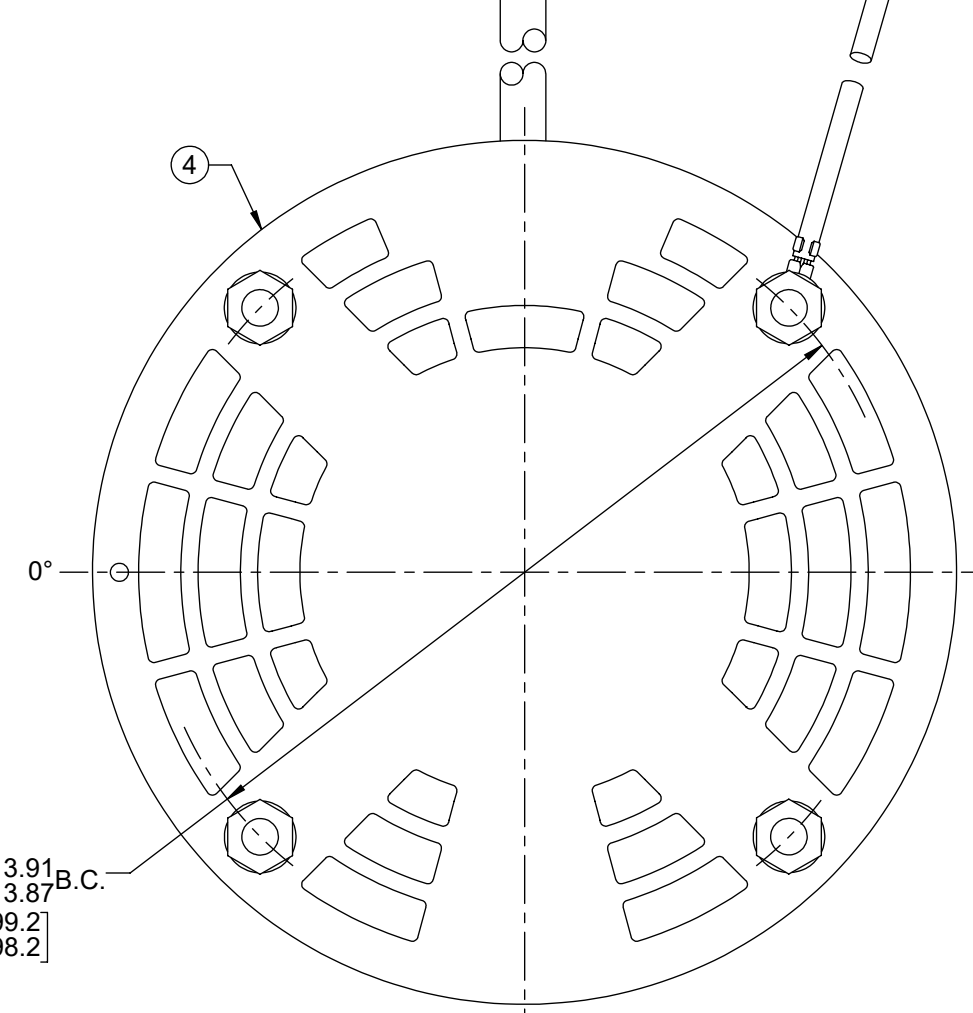
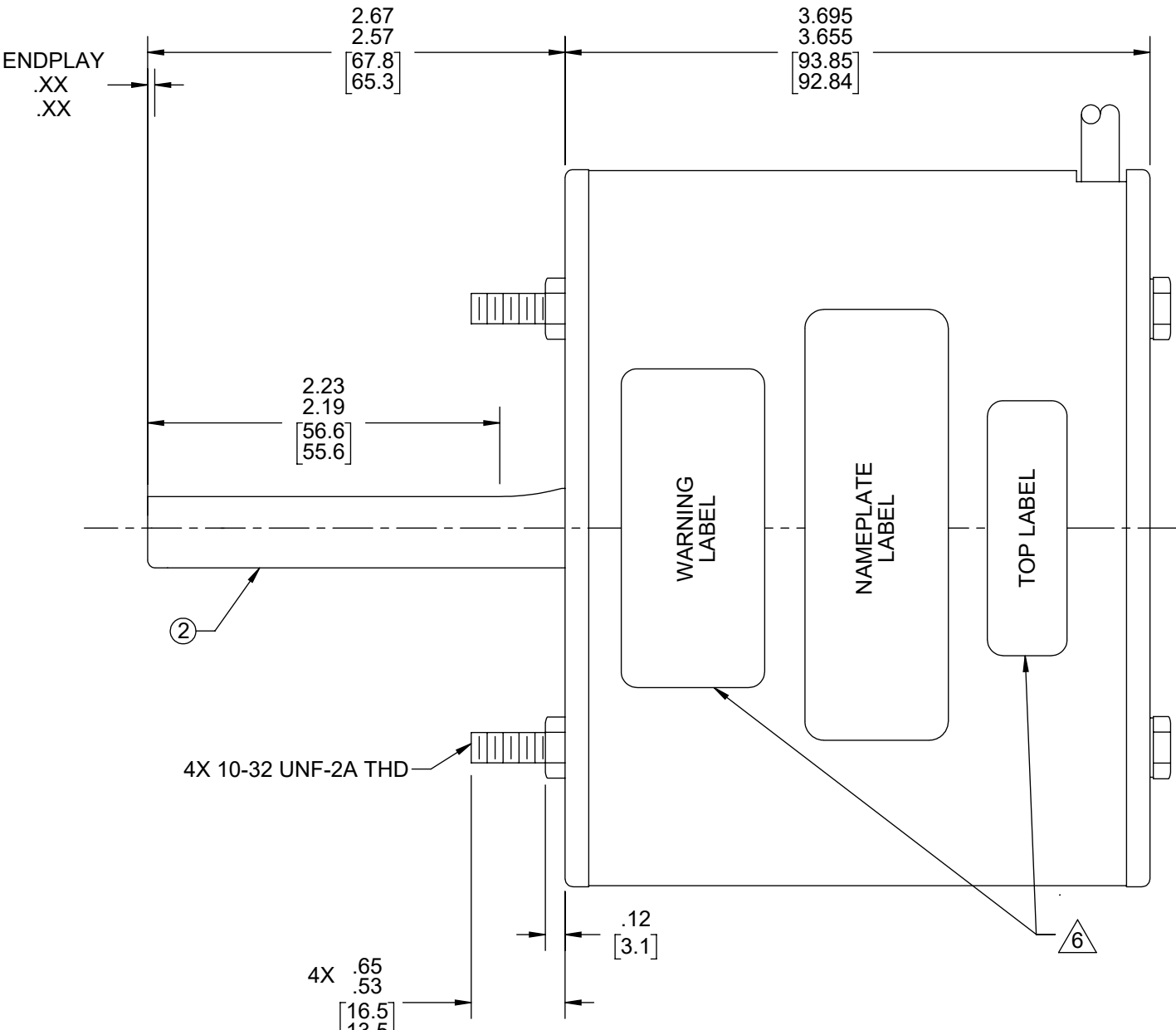
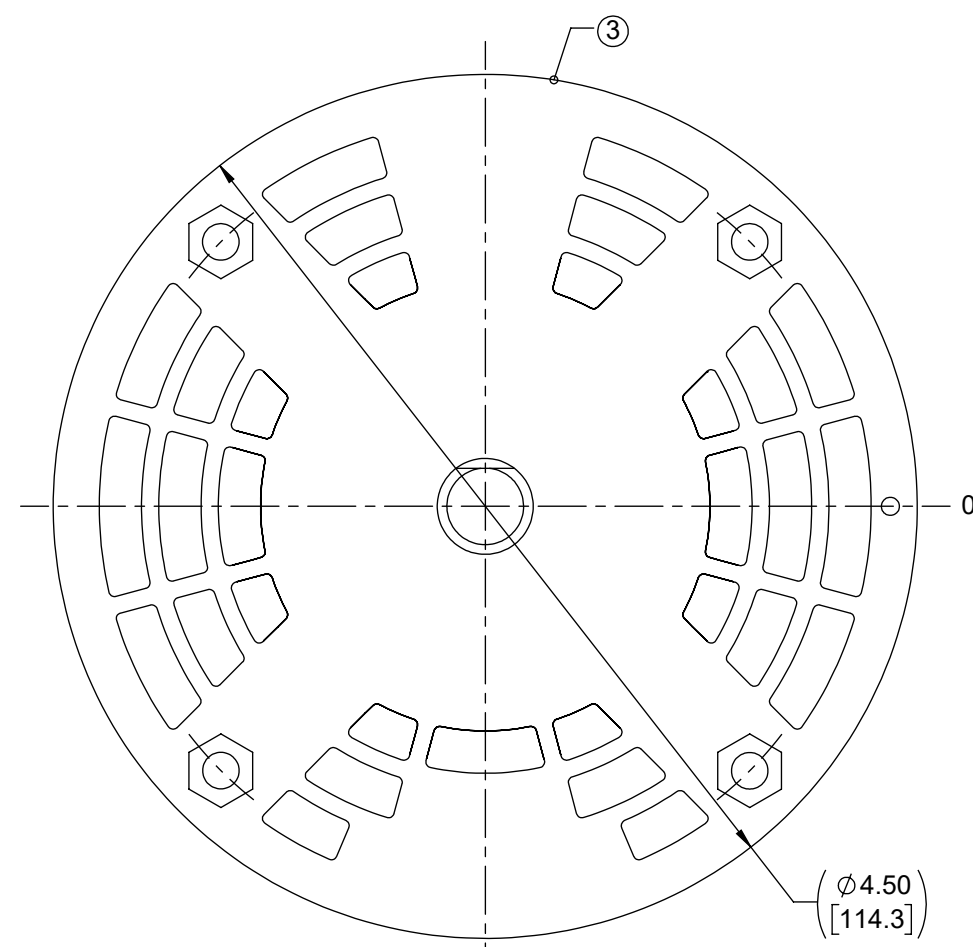
3

2

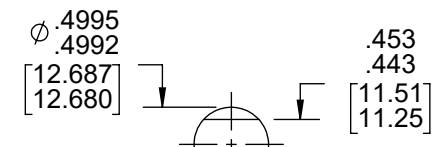
1

OPPOSITE LEAD END

LEAD END



ROTATION



SHAFT DETAIL

LEAD MATERIAL
 18 GA. 105°C 2/64 INSUL.
 4-COND. SJTO, BLACK JACKET
 WHITE, BLACK, BLUE, RED
 32.00/30.00 [812.8/762.0]
 1.75/1.25 [44.5/31.8] SPLIT
 .56/.44 [14.2/11.2] STRIP

GROUND LEAD MATERIAL
 18 GA. 105°C 2/64 INSUL.
 THERMO. GRN/YEL
 7.00/6.00 [177.0/152.0]
 W/ RING TERMINALS
 AMP 350436-2

61206085

TOP

61305568

SAFETY WARNING
 This motor must be grounded in accordance with local or national electrical codes to prevent possible injury due to electrical shock

AVERTISSEMENT DE SÉCURITÉ
 Ce moteur doit être fondée sur conformément à la réglementation locale ou national électrique codes pour prévenir d'éventuelles blessures en raison de choc électrique

NOTES:

1. STATOR LOCATION DIMENSION IS FROM MAIN FRAME EDGE (OPPOSITE LEAD END) TO STATOR STEEL 1.06/1.04 [26.9/26.4].
2. STATOR STACK 1 1/4.
3. THRU AIR SPACING BETWEEN WIRE AND METAL .063 [1.60] MIN.
4. TIE BOLT TORQUE TOLERANCE 13-17 IN.LBS.
5. ASSEMBLE SPRING 00511620, IN LEAD END END SHIELD. ASSEMBLE BEARING SPACER 00061226, IN OPPOSITE END SHIELD.
6. LOCATE TOP LABEL 61206085 AND 61305568, AT 0° AS SHOWN TO READ RIGHT FROM LEAD END OF MOTOR.
7. MAXIMUM 0.1 Ω RESISTANCE BETWEEN GROUND TERMINAL AND MOTOR FRAME.
8. SHAFT IS BONDERIZED.
9. EDGE OF JACKET MUST BE INSIDE MAIN FRAME
10. MOTORS MUST START WITH 90 VOLTS APPLIED TO LOWEST SPEED.
11. SALES TO SPECIFY ON P.O. WHICH PACK TO USE.
12. PAMPHLET PACKED WITH MOTOR.
13. SEE PACKAGING MANUAL PAGE 2 FOR PACKAGING PROCEDURE.
14. PACK 1 PER CONTAINER, 40 PER LAYER, 6 LAYERS PER PALLET, 240 MAX. PER PALLET.
15. SEE DRAWING 87856079 SH. 1 FOR PALLET LAYOUT.
16. CENTER LABEL 61225913 ON END OF CARTON.
17. PLACE PAMPHLET 61224579 IN CARTON WITH MOTOR.
18. CARTON LABELS MUST ALL FACE ONE DIRECTION TOWARD THE OPEN END OF THE PALLET, SEE 88834408.
19. NO PACKAGING TAPE OVER CARTON LABEL.

00464072

00464516

FASCO™
 Assembled In Mexico
 No. 71090126 TYPE U9B1
 115 V 60 Hz
 Model D119
 1/11-1/25-1/70 HP
 Shielded Ball Brg 1500 RPM
 Thermally Protected OSB

AO Class B Ph 1
 Max Amb: 40°C
 (3) SPD
 2.9-1.5-1.0 A

61299553

CUSTOMER:	FASCO DIST.	APPLICATION:	DIST. SALES	HI-POT TEST 2000 VOLTS MAX LEAKAGE CURRENT 5 ma				PRODUCTION TEST AT IDLE 115 VOLTS 60 Hz		MOTOR SPEED		
CUSTOMER PN:	D119	MOTOR WEIGHT:	6.12 LBS.	ENVIRONMENT:		CLASS B	AMP		WATT	HIGH		
		INSULATION	CLASS B	MOTOR TYPE		REFERENCE SAMPLE	.77 - .63		44.0 - 36.0	LOW		
		SHADED POLE		B	LA	FR	A	S	C	E	B	A
				00	09	30	V	05	AL	7	0	0
TYPICAL PERFORMANCE AT 115 VOLTS 60 HZ						1PH 1/11 HP						
MOTOR SPEED	RPM	AMP	WATT	IN OZ	RPM	AMP	WATT	IN OZ	AMP	WATT	IN OZ	BREAK
HIGH	1768	2.25	129	58.0	1500	2.84	211	19.0	3.65	248	59.0	
MED.	1759	1.12	64	29.0	1500	1.43	103	9.0	1.83	116	29.0	
LOW	1746	.70	40	17.0	1500	.89	63	5.0	1.12	69	17.0	

DRAWING REVISION AC	REVISION BY SDM	REV DATE/© DATE 4/5/2022	TOLERANCES (EXCEPT AS NOTED): DEC. INCH mm ANGLE .X ±0.1 [±3] ±1° .XX ±0.01 [±0.3] .XXX ±0.005 [±0.13] .XXXX ±0.0005 [±0.013]	DRAWN BY PLA	Regal Rexnord Regal Beloit America, Inc.
REQUEST NUMBER ECR-0216632	APPROVED BY MLS	DATE 4/5/2022	REMOVE BURRS & BREAK SHARP EDGES: .003/.015 [.08/.38] X 45° CORNER FILLETS: R.02 [5] MACHINED SURFACES: .125/ mm 3.2/ INCH mm mm DIMENSIONS IN [BRACKETS] ARE FOR REFERENCE ONLY	DATE 8/17/2017	
REQUEST NUMBER DESCRIPTION CHANGE N/P FASCO LOGO TO FASCO TM				APPROVED BY MLS	DESCRIPTION OUTLINE MOTOR ASSY
COPYRIGHT (PER REVISION DATE) REGAL BELOIT AMERICA, INC. ALL RIGHTS RESERVED. PROPRIETARY AND CONFIDENTIAL INFORMATION - THIS DOCUMENT IS THE PROPERTY OF REGAL BELOIT AMERICA, INC. (OWNER) AND CONTAINS OWNER'S PROPRIETARY INFORMATION. ANY PERSON, CORPORATION OR OTHER FIRM RECEIVING IT IS DEEMED, BY RECEIVING IT, TO AGREE THAT IT, AND/OR ANY PART OF IT, SHALL NOT BE DISCLOSED TO ANY PERSON, CORPORATION OR OTHER ENTITY, DUPLICATED, AND/OR USED, EXCEPT AS EXPRESSLY APPROVED IN WRITING IN ADVANCE BY OWNER. THIS DOCUMENT SHALL BE RETURNED TO OWNER UPON REQUEST. IT MAY BE SUBJECT TO CERTAIN RESTRICTIONS UNDER APPLICABLE EXPORT CONTROL LAWS AND REGULATIONS.				DATE 8/17/2017	MATERIAL PROCESS/FINISH GRAY
THIRD ANGLE PROJECTION		SIZE C	DRAWING NUMBER 71090126	SHEET 1 OF 1	