

PRODUCT INFORMATION PACKET

FASCO®

Model No: D0540

Catalog No: D0540

Ventilation Motor, 1/75 HP, 1 Ph, 60 Hz, 115 V, 1550 RPM, 1 Speed, 3.3" Diameter, OAO



Regal and Fasco are trademarks of Regal Rexnord Corporation or one of its affiliated companies.

©2022 Regal Rexnord Corporation, All Rights Reserved. MC017097E

RegalRexnord



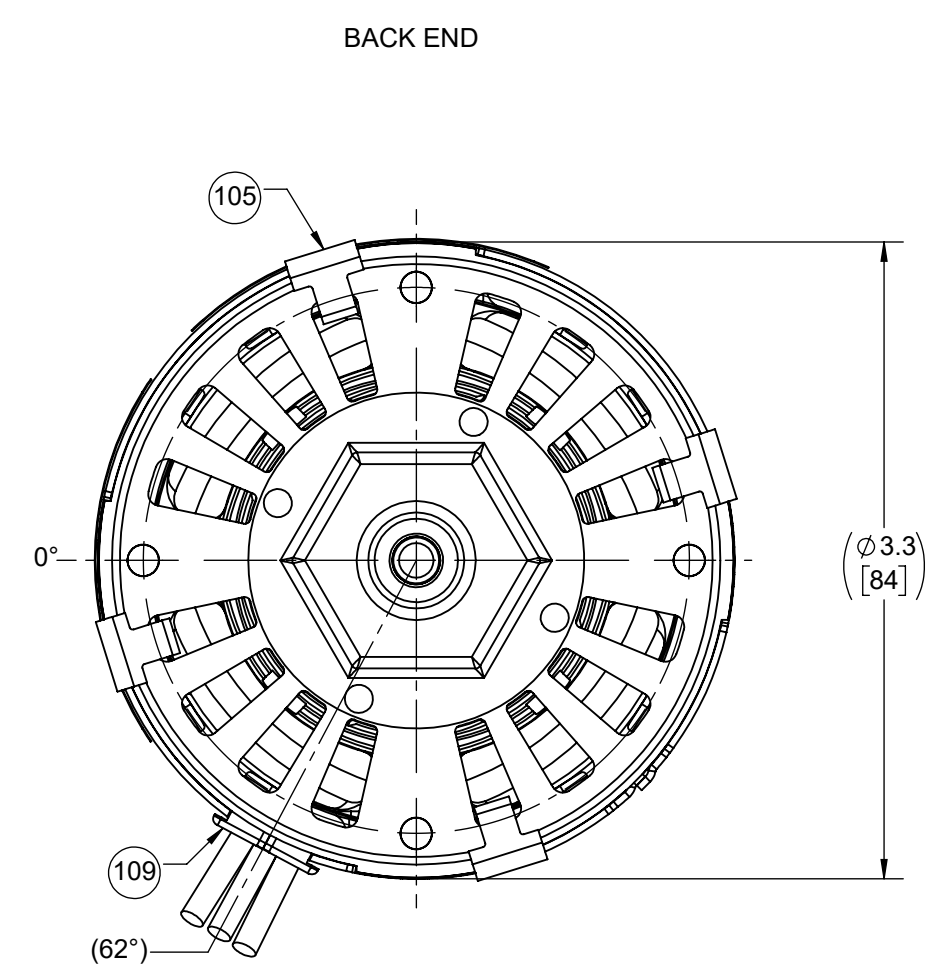
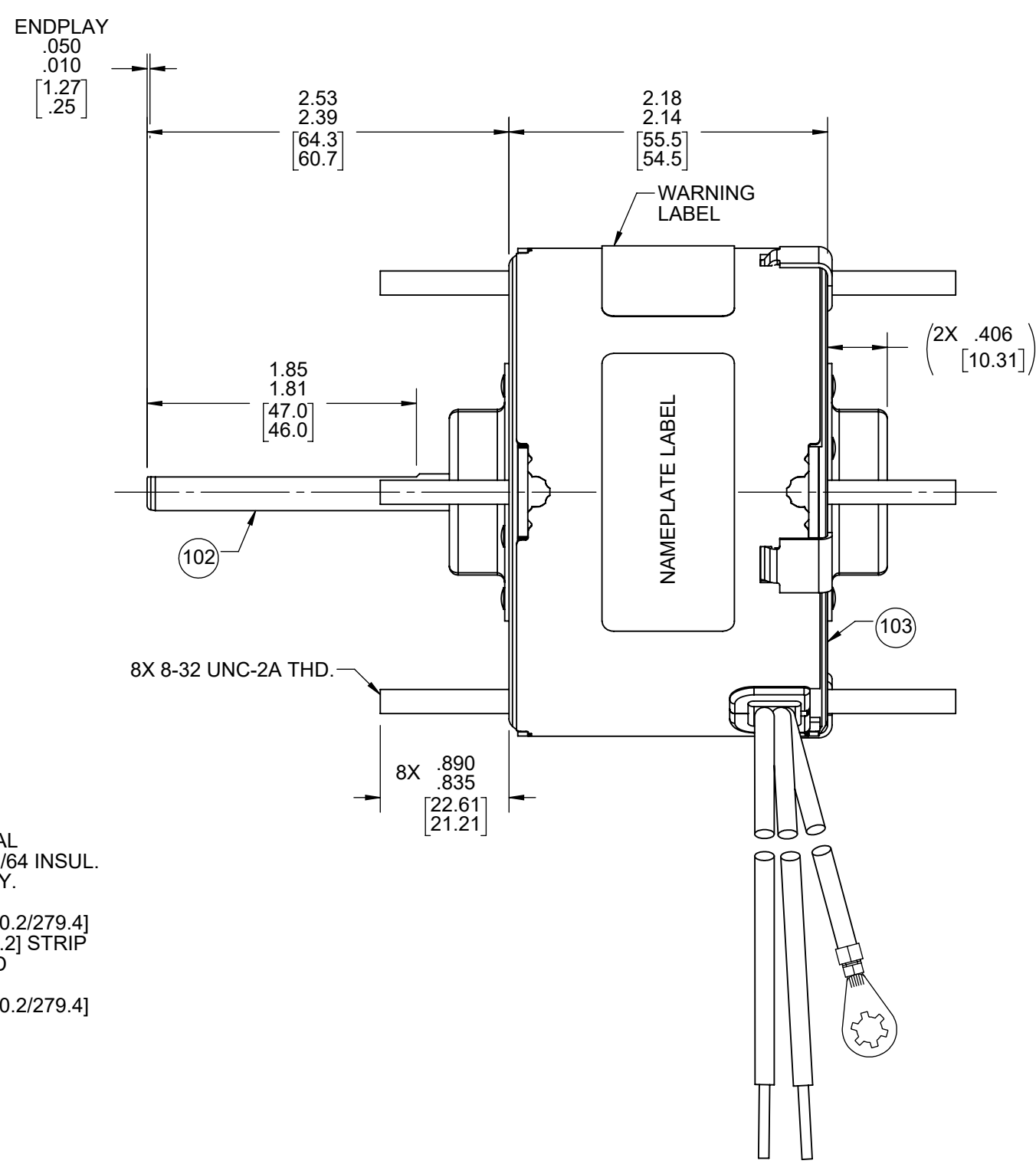
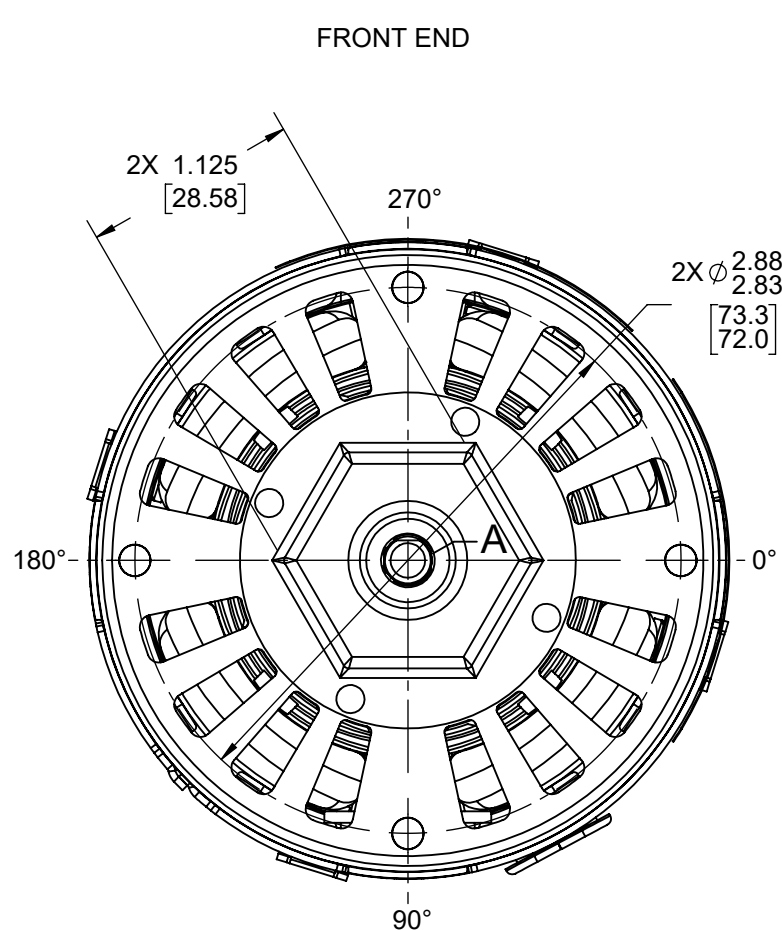
Nameplate Specifications

Output HP	1/75 Hp	Output KW	0.01 kW
Frequency	60 Hz	Voltage	115 V
Current	0.62 A	Speed	1550 rpm
Service Factor	1	Phase	1
Duty	Air Over	Insulation Class	B
Frame	3.3	Enclosure	Open Air Over
Thermal Protection	Thermally Protected	Ambient Temperature	40 °C
UL	Recognized	CSA	N
CE	N	Number of Speeds	1

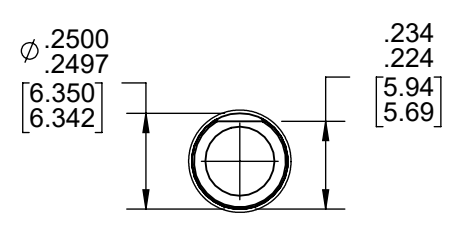
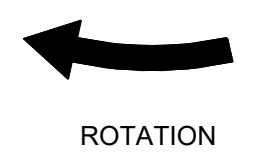
Technical Specifications

Electrical Type	Shaded Pole	Starting Method	Across The Line
Poles	4	Rotation	Clockwise Shaft End
Mounting	Extended Studs	Drive End Bearing	Sleeve
Opp Drive End Bearing	Sleeve	Frame Material	Steel
Shaft Type	Flat	Overall Length	5.12 in
Frame Length	2.18 in	Shaft Diameter	0.250 in
Shaft Extension	2.5 in		
Outline Drawing	71732208-S01	Connection Drawing	NA

This is an uncontrolled document once printed or downloaded and is subject to change without notice. Date Created:11/29/2022



LEAD MATERIAL
 18 GA. 125°C 2/64 INSUL.
 X-LINKED POLY.
 (2) BLACK
 13.00/11.00 [330.2/279.4]
 .56/.44 [14.2/11.2] STRIP
 GROUND LEAD
 GRN/YEL
 13.00/11.00 [330.2/279.4]
 RING TERM.
 AMP 350436-2



DETAIL A
SHAFT

- NOTES:
 1. MOTOR HAS 416 SS SHAFT.
 2. NO PACKAGING TAPE OVER CARTON LABEL.

61305568

00464668

SAFETY WARNING
 This motor must be grounded in accordance with local or national electrical codes to prevent possible injury due to electrical shock

AVERTISSEMENT DE SÉCURITÉ
 Ce moteur doit être fondée sur conformément à la réglementation locale ou national électrique codes pour prévenir d'éventuelles blessures en raison de choc électrique

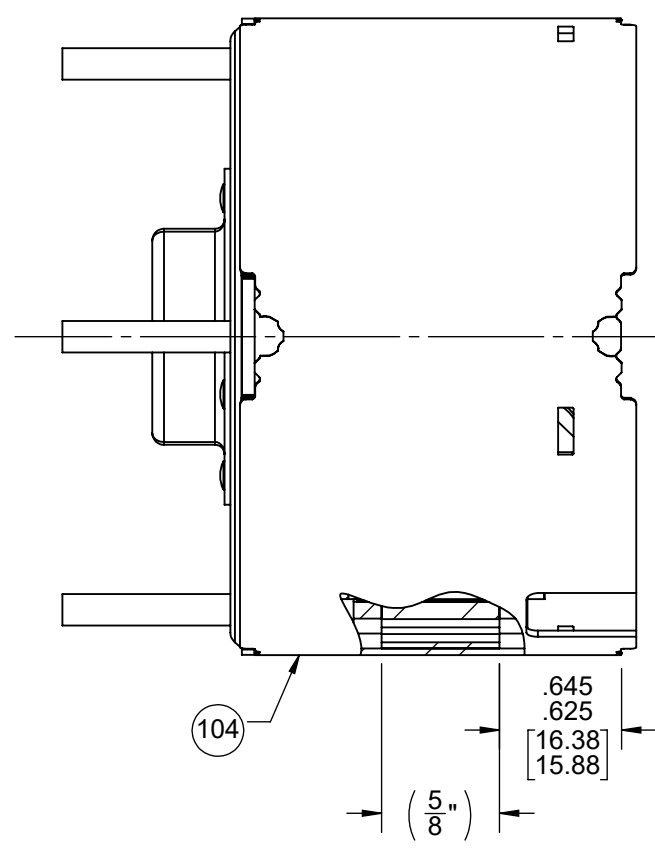
FASCO™
 Assembled in Mexico
 No. 71732208 TYPE U73B1 T.P. AO
 115 V 60 HZ Class B
 .62 A 1550 RPM 1/75 HP
 Model D0540 E40513
 Max Amb: 40°C

CUSTOMER:	FASCO DIST.	APPLICATION:	COUNTER SALES								
CUSTOMER PN:	D0540	MOTOR WEIGHT:									
		ENVIRONMENT:	DAMP								
HORIZONTAL 	UP DOWN	MOTOR TYPE				REFERENCE SAMPLE					
		SHADED POLE				X-0006579-2					
		B	LA	FR	A	S	C	E	B	A	
		00	73	30	V	01	OY	5	1	0	
TYPICAL PERFORMANCE AT 115 VOLTS 60 HZ											
MOTOR SPEED	IDLE			LOADED			LOCKED			BREAK	
	RPM	AMP	WATT	IN OZ	RPM	AMP	WATT	IN OZ	AMP	WATT	IN OZ
	1742	.57	35	9.0	1550	.62	46	6.7	.86	70	12.6

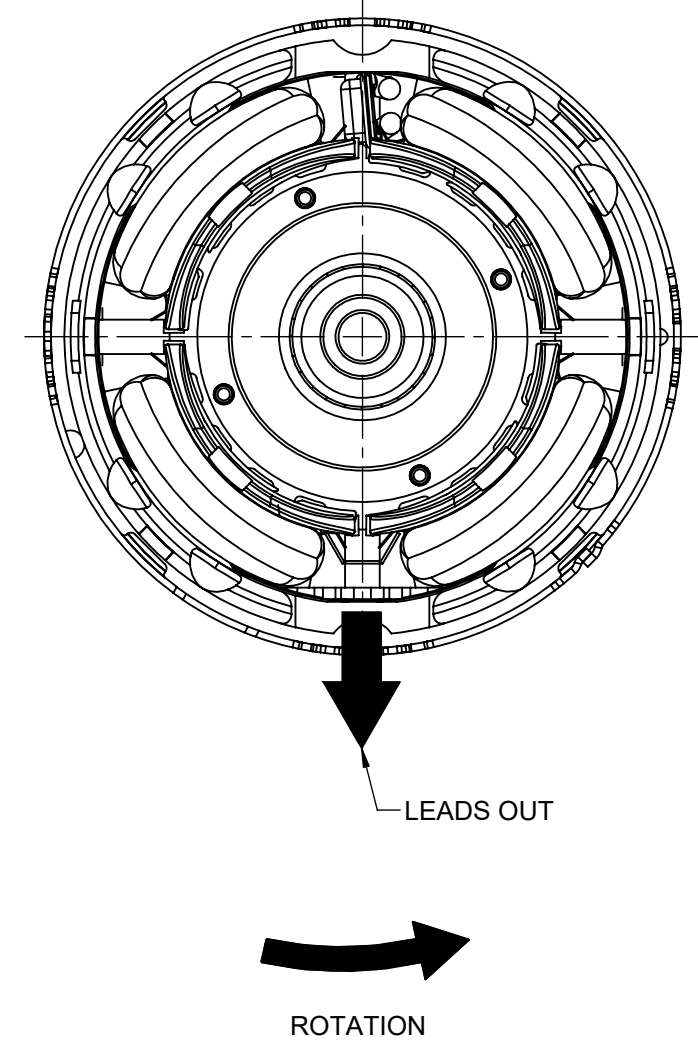
DRAWING REVISION CA	REVISION BY MLS	REV DATE/© DATE 9/8/2022	TOLERANCES (EXCEPT AS NOTED): DEC. INCH mm ANGLE .X ±0.1 [±3] ±1° .XX ±0.01 [±0.3] .XXX ±0.005 [±0.13] .XXXX ±0.0005 [±0.013]	DRAWN BY MLS	Regal Beloit America, Inc.
REQUEST NUMBER ECR-0220673	APPROVED BY KBB	DATE 9/8/2022	REMOVE BURRS & BREAK SHARP EDGES: .003/.015 [.08/.38] X 45° CORNER FILLETS: R.02 [5] MACHINED SURFACES: .125/ mm 3.2 INCH/mm mm DIMENSIONS IN [BRACKETS] ARE FOR REFERENCE ONLY	DATE 9/8/2022	
REQUEST NUMBER DESCRIPTION UPDATED FASCO LOGO ON NAMEPLATE LABEL				APPROVED BY KBB	DESCRIPTION OUTLINE MOTOR ASSY
COPYRIGHT (PER REVISION DATE) REGAL BELOIT AMERICA, INC. ALL RIGHTS RESERVED. PROPRIETARY AND CONFIDENTIAL INFORMATION - THIS DOCUMENT IS THE PROPERTY OF REGAL BELOIT AMERICA, INC. (OWNER) AND CONTAINS OWNER'S PROPRIETARY INFORMATION. ANY PERSON, CORPORATION OR OTHER FIRM RECEIVING IT IS DEEMED, BY RECEIVING IT, TO AGREE THAT IT, AND/OR ANY PART OF IT, SHALL NOT BE DISCLOSED TO ANY PERSON, CORPORATION OR OTHER ENTITY, DUPLICATED, AND/OR USED, EXCEPT AS EXPRESSLY APPROVED IN WRITING IN ADVANCE BY OWNER. THIS DOCUMENT SHALL BE RETURNED TO OWNER UPON REQUEST. IT MAY BE SUBJECT TO CERTAIN RESTRICTIONS UNDER APPLICABLE EXPORT CONTROL LAWS AND REGULATIONS.				DATE 9/8/2022	MATERIAL PROCESS/FINISH BLACK
				THIRD ANGLE PROJECTION 	SIZE C
				DRAWING NUMBER 71732208	SHEET 1 OF 2

- NOTES:
1. STAKE STATOR TO MAIN FRAME PER 88830264.
 2. MAXIMUM TORQUE REQUIRED TO TURN MOTOR SHAFT IS 3/8 IN. OZ.
 3. MAKE UP WASHERS ARE TO BE ADDED OR DELETED TO ACHIEVE REQUIRED ENDPLAY.

FRONT END



BACK END



PACKING SPECIFICATIONS

1. PACK 1 PER CONTAINER, 40 CONTAINERS PER LAYER, 6 LAYERS PER PALLET, 240 MAX. PER PALLET, PER 88834200.
2. PLACE FILLER FOAM RING ON END OF MOTOR AND FILLER TUBE ON SHAFT EXTENSION END. PLACE MOTOR IN CARTON, LEADS DOWN, CLOSE FLAPS AND TAPE. CARTON LABELS MUST ALL FACE ONE DIRECTION TOWARD THE OPEN END OF THE PALLET, SEE 88834408.
3. PLACE FLAT PAD ON PALLET, (1) BETWEEN EACH LAYER AND (1) ON TOP LAYER OF CARTON. PLACE ALL INSPECTION AND WRITING ON TOP FLAT PAD TO PREVENT MARKING ON CARTONS PRIOR TO STRETCH WRAP.

DRAWING REVISION CA	REVISION BY MLS	REV DATE/© DATE 9/8/2022	TOLERANCES (EXCEPT AS NOTED): DEC. INCH mm ANGLE	DRAWN BY MLS	Regal Beloit America, Inc.
REQUEST NUMBER ECR-0220673	APPROVED BY KBB	DATE 9/8/2022	.X ±0.1 [±3] ±1° .XX ±0.01 [±3] .XXX ±0.005 [±0.13] .XXXX ±0.0005 [±0.013]	DATE 9/8/2022	
REQUEST NUMBER DESCRIPTION UPDATED FASCO LOGO ON NAMEPLATE LABEL			REMOVE BURRS & BREAK SHARP EDGES: .003/.015 [.08/.38] X 45° CORNER FILLETS: R.02 [.5]	APPROVED BY KBB	DESCRIPTION OUTLINE MOTOR ASSY
<small>COPYRIGHT (PER REVISION DATE) REGAL BELOIT AMERICA, INC. ALL RIGHTS RESERVED. PROPRIETARY AND CONFIDENTIAL INFORMATION - THIS DOCUMENT IS THE PROPERTY OF REGAL BELOIT AMERICA, INC. ("OWNER") AND CONTAINS OWNER'S PROPRIETARY INFORMATION. ANY PERSON, CORPORATION OR OTHER FIRM RECEIVING IT IS DEEMED, BY RECEIVING IT, TO AGREE THAT IT, AND/OR ANY PART OF IT, SHALL NOT BE DISCLOSED TO ANY PERSON, CORPORATION OR OTHER ENTITY, DUPLICATED, AND/OR USED, EXCEPT AS EXPRESSLY APPROVED IN WRITING IN ADVANCE BY OWNER. THIS DOCUMENT SHALL BE RETURNED TO OWNER UPON REQUEST. IT MAY BE SUBJECT TO CERTAIN RESTRICTIONS UNDER APPLICABLE EXPORT CONTROL LAWS AND REGULATIONS.</small>			MACHINED SURFACES: .125/ mm 3.2 INCH mm	DATE 9/8/2022	MATERIAL
			mm DIMENSIONS IN [BRACKETS] ARE FOR REFERENCE ONLY	REFERENCE	PROCESS/FINISH BLACK
			THIRD ANGLE PROJECTION	SIZE C	DRAWING NUMBER 71732208
					SHEET 2 OF 2