

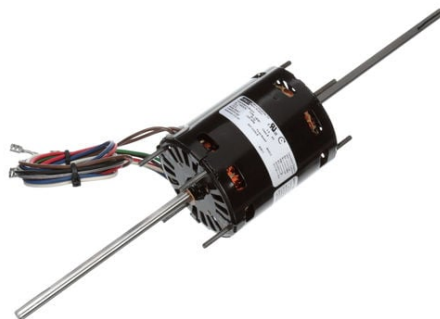
# PRODUCT INFORMATION PACKET

FASCO®

Model No: D0447

Catalog No: D0447

Ventilation Motor, 1/12 HP, 1 Ph, 60 Hz, 115 V, 1550 RPM, 3 Speed, 3.3" Diameter, OAO



Regal and Fasco are trademarks of Regal Rexnord Corporation or one of its affiliated companies.  
©2022 Regal Rexnord Corporation, All Rights Reserved. MC017097E

RegalRexnord



**Nameplate Specifications**

Output HP	1/12 Hp	Output KW	0.06 kW
Frequency	60 Hz	Voltage	115 V
Current	1.32 A	Speed	1550 rpm
Service Factor	1	Phase	1
Duty	Air Over	Insulation Class	B
Frame	3.3	Enclosure	Open Air Over
Thermal Protection	Thermally Protected	Ambient Temperature	40 °C
UL	Recognized	CSA	N
CE	N	Number of Speeds	3

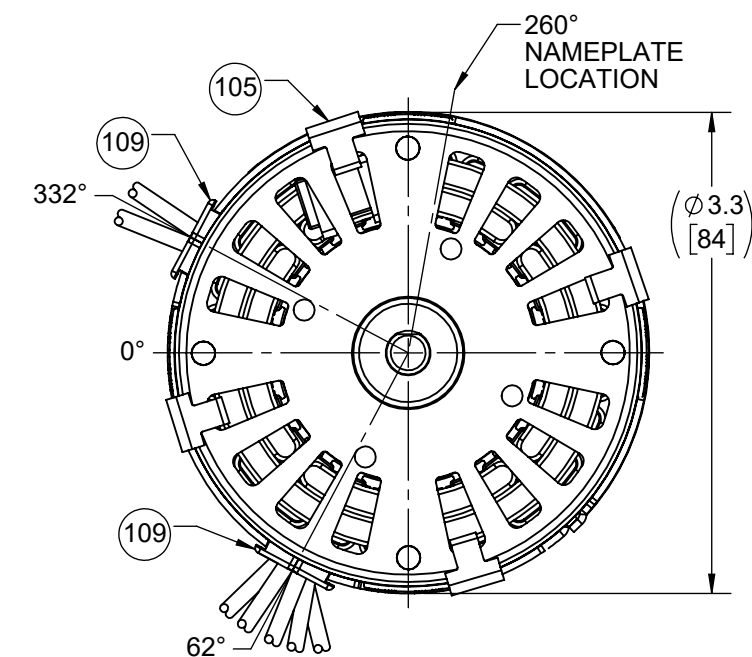
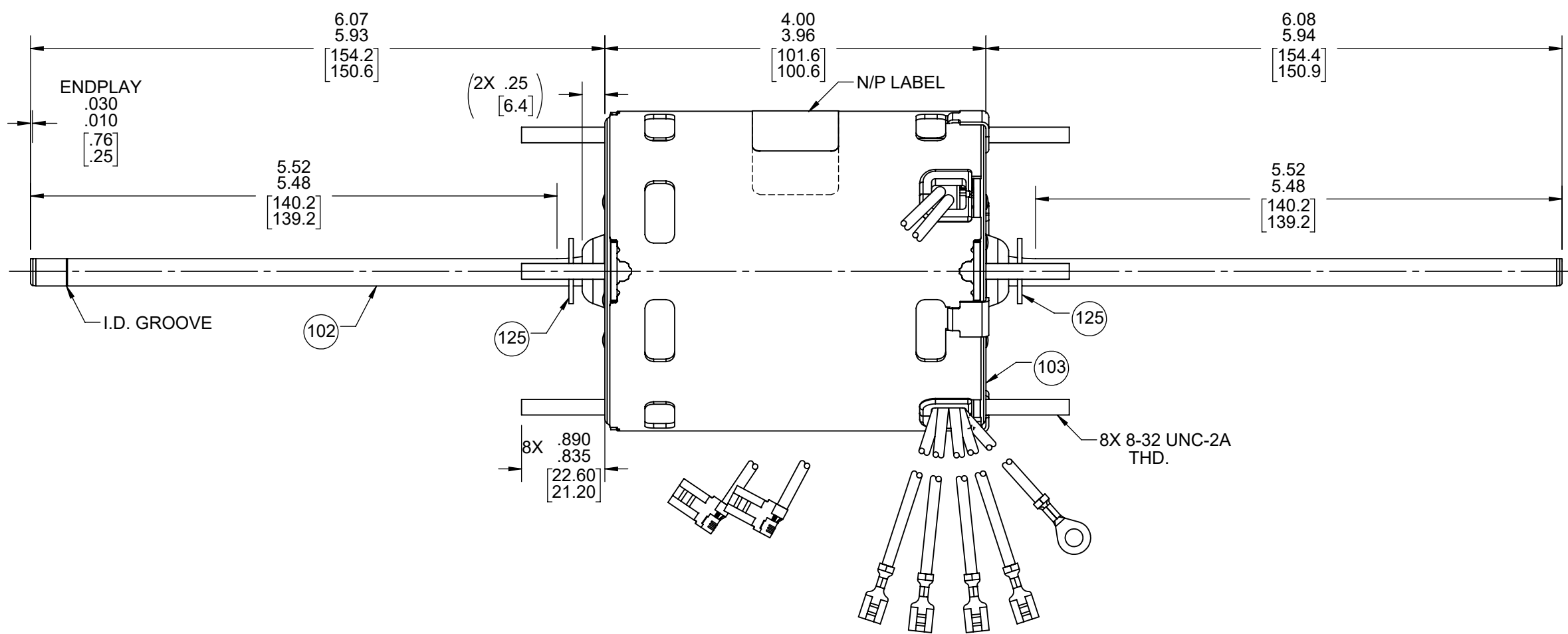
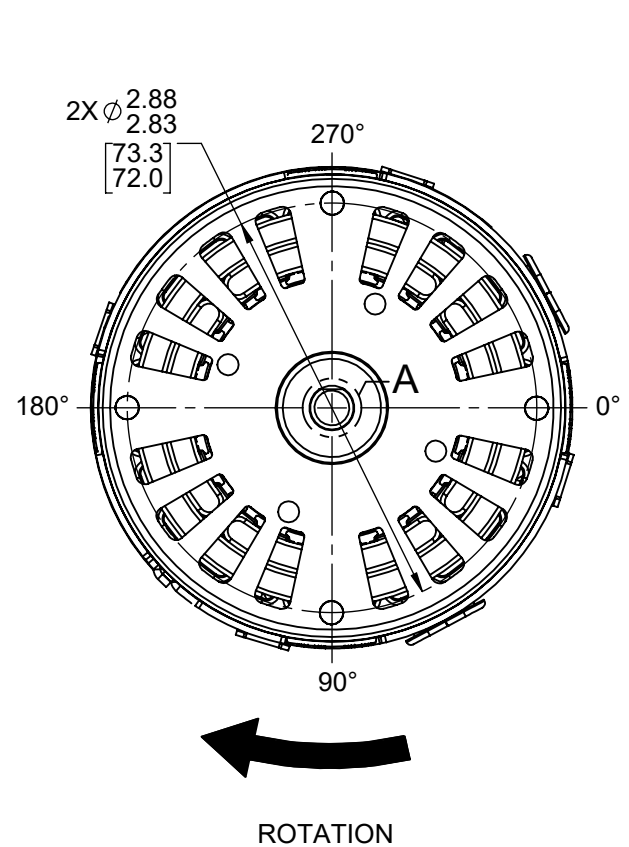
**Technical Specifications**

Electrical Type	Permanent Split Capacitor	Starting Method	Across The Line
Poles	4	Rotation	Clockwise Shaft End
Mounting	Extended Studs	Drive End Bearing	Sleeve
Opp Drive End Bearing	Sleeve	Frame Material	Steel
Shaft Type	Flat	Overall Length	16.15 in
Frame Length	4.00 in	Shaft Diameter	0.313 in
Shaft Extension	6.07 in		
Connection Drawing	00469227	Outline Drawing	71903379

This is an uncontrolled document once printed or downloaded and is subject to change without notice. Date Created:11/29/2022

FRONT END

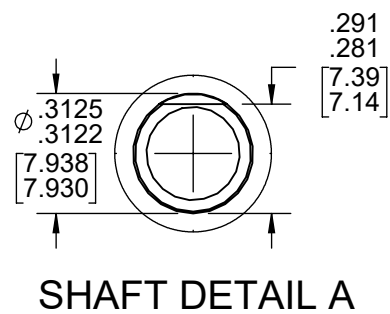
BACK END



LEAD MATERIAL  
18 GA. 125°C 2/64 INSUL.  
X-LINKED POLY. WHITE,  
BLACK, BLUE, AND RED  
22.00/20.00 [558.8/508.0]  
W/ FSPADE TERMINALS  
AMP 42660-2

CAPACITOR LEAD MATERIAL  
BROWN, AND BRN/WHT  
22.00/20.00 [558.8/508.0]  
W/ FLAG TERNINALS  
AMP42742-2

GROUND LEAD MATERIAL  
GRN/YEL  
14.00/12.00 [355.6/304.8]  
W/ RING TERMINAL  
AMP 41333



- NOTES:  
1. MOTOR HAS 416 SS SHAFT.  
2. NO PACKAGING TAPE OVER CARTON LABEL.

61305568

**SAFETY WARNING**  
This motor must be grounded in accordance with local or national electrical codes to prevent possible injury due to electrical shock



**AVERTISSEMENT DE SÉCURITÉ**  
Ce moteur doit être fondée sur conformément à la réglementation locale ou national électrique codes pour prévenir d'éventuelles blessures en raison de choc électrique

APPLY IN A CONVENIENT LOCATION TO READ FROM BACK END

00464537

00469227

FASCO™

Assembled In Mexico

No. 71903379 TYPE U90B1 T.P. AO  
115 V 60 Hz Class B

1.32 A 1550 RPM

Model D0447 Three-Speed  
5 MFD/370 VAC ROT CCWLE E40513  
Reference 1/12 HP



Connection Diagram  
Wht — Common  
Blk — High  
Blu — Med  
Red — Low  
Brn —  
Brn/Wht —  
Grn/Yel — Grd

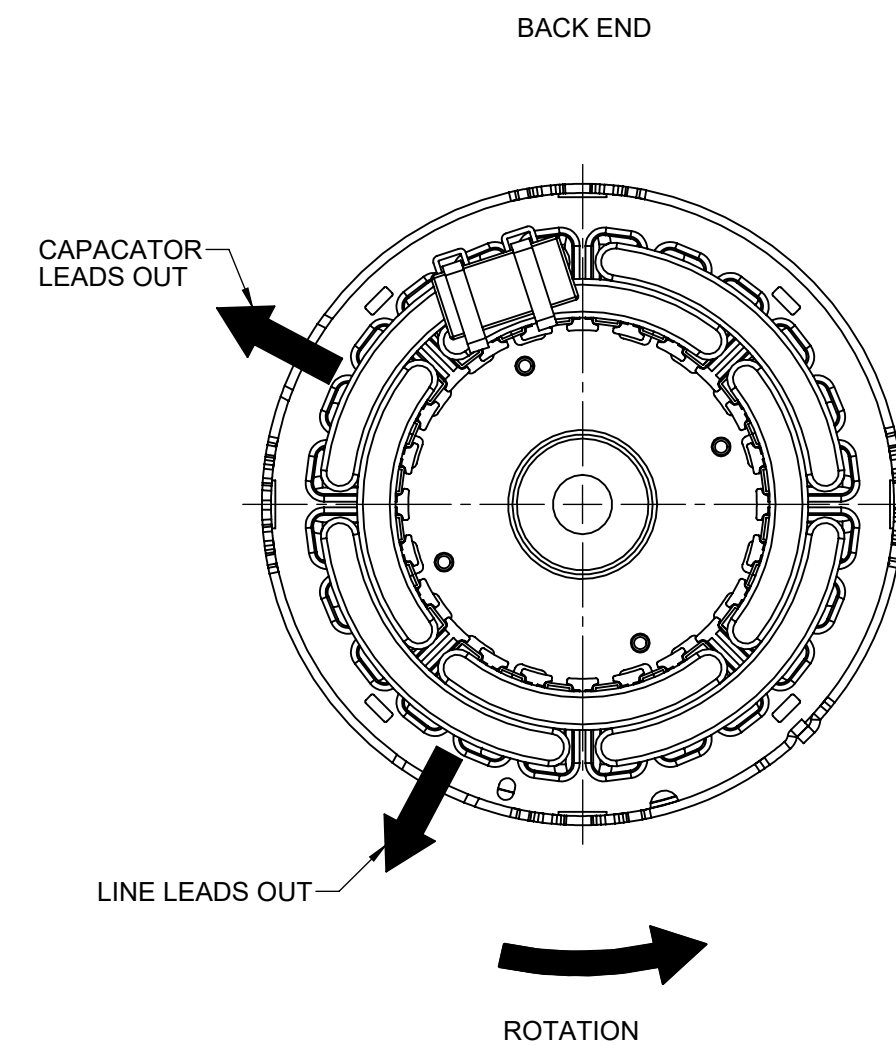
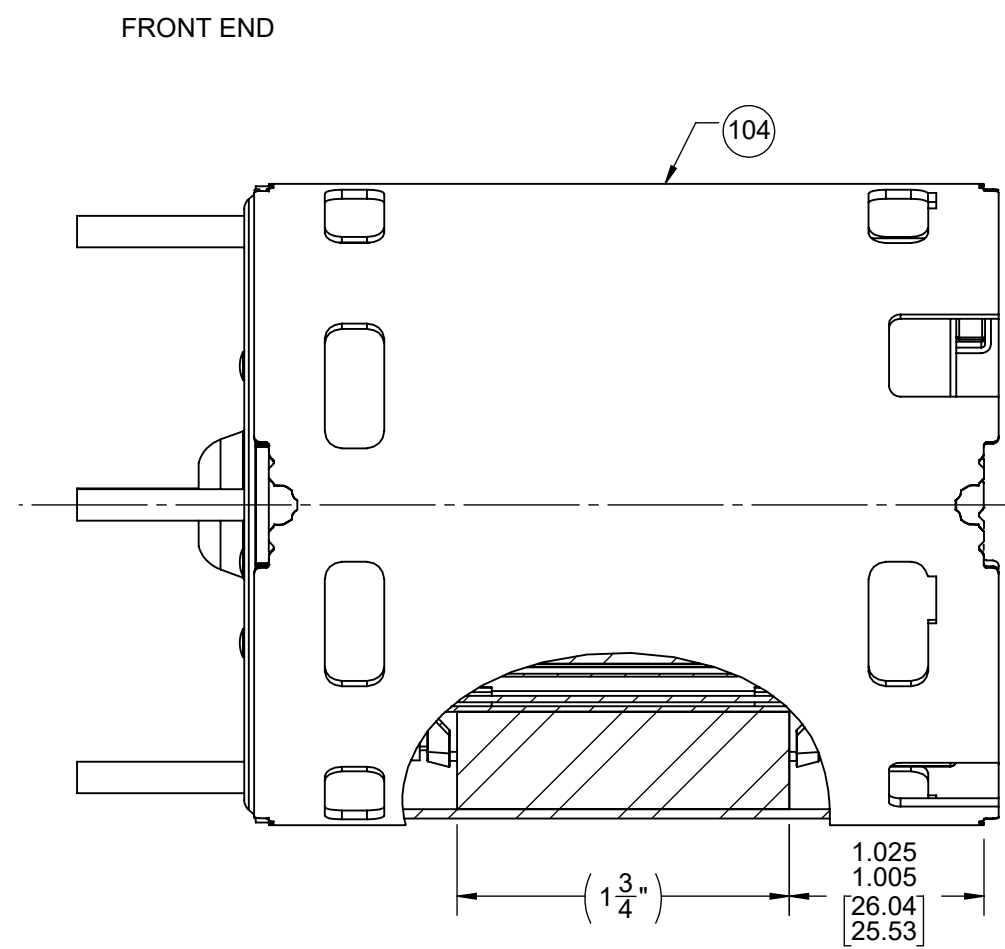
61299553

CUSTOMER:	FASCO DIST.	APPLICATION:	HVAC								
CUSTOMER PN:	D0447	MOTOR WEIGHT:									
		ENVIRONMENT:	DRY								
HORIZONTAL	UP	MOTOR TYPE			REFERENCE SAMPLE						
		PSC			X-0007245-1						
		B	LA	FR	A	S	C	E	B	A	
	DOWN	00	90	30	V	07	CZ	7	3	0	
TYPICAL PERFORMANCE AT 115 VOLTS 60 HZ											
MOTOR SPEED	IDLE			LOADED			LOCKED		BREAK		
	RPM	AMP	WATT	IN OZ	RPM	AMP	WATT	IN OZ	AMP	WATT	IN OZ
HIGH	1789	.71	58	61.5	1550	1.32	143	19.3	2.13	225	64.7
MED.	1786	.45	38	39.4	1550	.86	93	12.2	1.44	150	41.6
LOW	1782	.32	27	27.4	1550	.63	68	8.9	1.05	110	29.3

DRAWING REVISION EC	REVISION BY SDM	REV DATE/@ DATE 11/18/2022	TOLERANCES (EXCEPT AS NOTED): DEC. INCH mm ANGLE .X ±0.1 [+3] ±1° .XX ±0.01 [+0.3] .XXX ±0.005 [+0.13] .XXX ±0.0005 [+0.013]	DRAWN BY N.HONG	Regal Rexnord Regal Beloit America, Inc.
REQUEST NUMBER ECR-022248	APPROVED BY MLS	DATE 11/18/2022	REMOVE BURRS & BREAK SHARP EDGES: .003/.015 [.08/.38] X 45° CORNER FILLETS: R.02 [.5] MACHINED SURFACES: .125/mm 3.2 mm DIMENSIONS IN [BRACKETS] INCH/mm ARE FOR REFERENCE ONLY	DATE 06-27-2014	DESCRIPTION OUTLINE MOTOR ASSY
REQUEST NUMBER DESCRIPTION ATTACH MODEL TO PRINT			THIRD ANGLE PROJECTION	APPROVED BY H.ZHU	MATERIAL
COPYRIGHT (PER REVISION DATE) REGAL BELOIT AMERICA, INC. ALL RIGHTS RESERVED. PROPRIETARY AND CONFIDENTIAL INFORMATION - THIS DOCUMENT IS THE PROPERTY OF REGAL BELOIT AMERICA, INC. (OWNER) AND CONTAINS OWNER'S PROPRIETARY INFORMATION. ANY PERSON, CORPORATION OR OTHER FIRM RECEIVING IT IS DEEMED, BY RECEIVING IT, TO AGREE THAT IT, AND/OR ANY PART OF IT, SHALL NOT BE DISCLOSED TO ANY PERSON, CORPORATION OR OTHER ENTITY, DUPLICATED, AND/OR USED, EXCEPT AS EXPRESSLY APPROVED IN WRITING IN ADVANCE BY OWNER. THIS DOCUMENT SHALL BE RETURNED TO OWNER UPON REQUEST. IT MAY BE SUBJECT TO CERTAIN RESTRICTIONS UNDER APPLICABLE EXPORT CONTROL LAWS AND REGULATIONS.			DATE 06-27-2014	REFERENCE	PROCESS/FINISH
			SIZE C	DRAWING NUMBER 71903379	SHEET 1 OF 2

NOTES:

1. STAKE STATOR TO MAIN FRAME PER 88830264.
2. MAXIMUM TORQUE REQUIRED TO TURN MOTOR SHAFT IS 3/8 INCH-OUNCE.
3. MAKE-UP WASHERS ARE TO BE ADDED OR DELETED TO ACHIEVE REQUIRED ENDPLAY.
4. BRING LINE LEADS DIRECTLY OUT LEAD EXIT. IGNORE POSITION OF OTHER LEADS, THEY WILL ROTATE BACK TO THEIR LEAD EXIT.
5. ASSEMBLE WATER SLINGER TO BOTH SIDES OF MOTOR .10/.04 [2.5/1.0] FROM BEARING BOSS.



PACKING SPECIFICATIONS

1. PACK 1 PER CONTAINER, 20 CONTAINERS PER LAYER, 8 LAYERS PER PALLET, 160 MAX. PER PALLET.
2. PLACE FILLER TUBE ON EACH SHAFT EXTENSION END, PLACE MOTOR IN CONTAINER, LEADS DOWN, CLOSE FLAPS AND TAPE.
3. CARTON LABELS MUST ALL FACE ONE DIRECTION TOWARD OPEN END OF PALLET. SEE 88834408.
4. NO PACKAGING TAPE OVER CARTON LABEL.
5. PLACE FLAT PAD ON PALLET, (1) BETWEEN EACH LAYER, AND (1) ON TOP LAYER OF CARTON, PLACE ALL INSPECTION AND WRITING ON TOP FLAT OF PAD TO PREVENT MARKING ON CONTAINERS, PRIOR TO STRECH WRAP.

DRAWING REVISION EC	REVISION BY SDM	REV DATE/@ DATE 11/18/2022	TOLERANCES (EXCEPT AS NOTED): DEC. INCH mm ANGLE	DRAWN BY N.HONG	Regal Beloit America, Inc.
REQUEST NUMBER ECR-0222248	APPROVED BY MLS	DATE 11/18/2022	.X ±0.1 [±3] ±1° .XX ±0.01 [±3] .XXX ±0.005 [±0.13] .XXX ±0.0005 [±0.013]	DATE 06-27-2014	
REQUEST NUMBER DESCRIPTION ATTACH MODEL TO PRINT			REMOVE BURRS & BREAK SHARP EDGES: .003/.015 [.08/.38] X 45° CORNER FILLETS: R.02 [.5] MACHINED SURFACES: .125/ mm 3.2 INCH/mm	APPROVED BY H.ZHU	DESCRIPTION OUTLINE MOTOR ASSY
<small>COPYRIGHT (PER REVISION DATE) REGAL BELOIT AMERICA, INC. ALL RIGHTS RESERVED. PROPRIETARY AND CONFIDENTIAL INFORMATION - THIS DOCUMENT IS THE PROPERTY OF REGAL BELOIT AMERICA, INC. ("OWNER") AND CONTAINS OWNER'S PROPRIETARY INFORMATION. ANY PERSON, CORPORATION OR OTHER FIRM RECEIVING IT IS DEEMED, BY RECEIVING IT, TO AGREE THAT IT, AND/OR ANY PART OF IT, SHALL NOT BE DISCLOSED TO ANY PERSON, CORPORATION OR OTHER ENTITY, DUPLICATED, AND/OR USED, EXCEPT AS EXPRESSLY APPROVED IN WRITING IN ADVANCE BY OWNER. THIS DOCUMENT SHALL BE RETURNED TO OWNER UPON REQUEST. IT MAY BE SUBJECT TO CERTAIN RESTRICTIONS UNDER APPLICABLE EXPORT CONTROL LAWS AND REGULATIONS.</small>			THIRD ANGLE PROJECTION	DATE 06-27-2014	MATERIAL
				SIZE C	PROCESS/FINISH
				DRAWING NUMBER 71903379	SHEET 2 OF 2