



Nameplate Specifications

Output HP	1/15 Hp	Output KW	0.05 kW
Frequency	60 Hz	Voltage	115 V
Current	2.18 A	Speed	1550 rpm
Service Factor	1	Phase	1
Duty	Air Over	Insulation Class	B
Frame	3.3	Enclosure	Open Air Over
Thermal Protection	Thermally Protected	Ambient Temperature	40 °C
UL	Recognized	CSA	N
CE	N	Number of Speeds	1

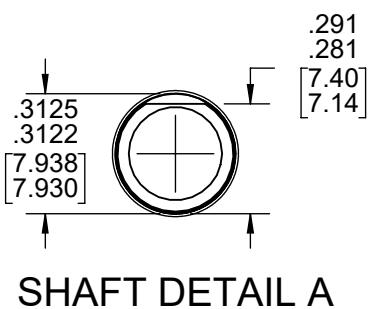
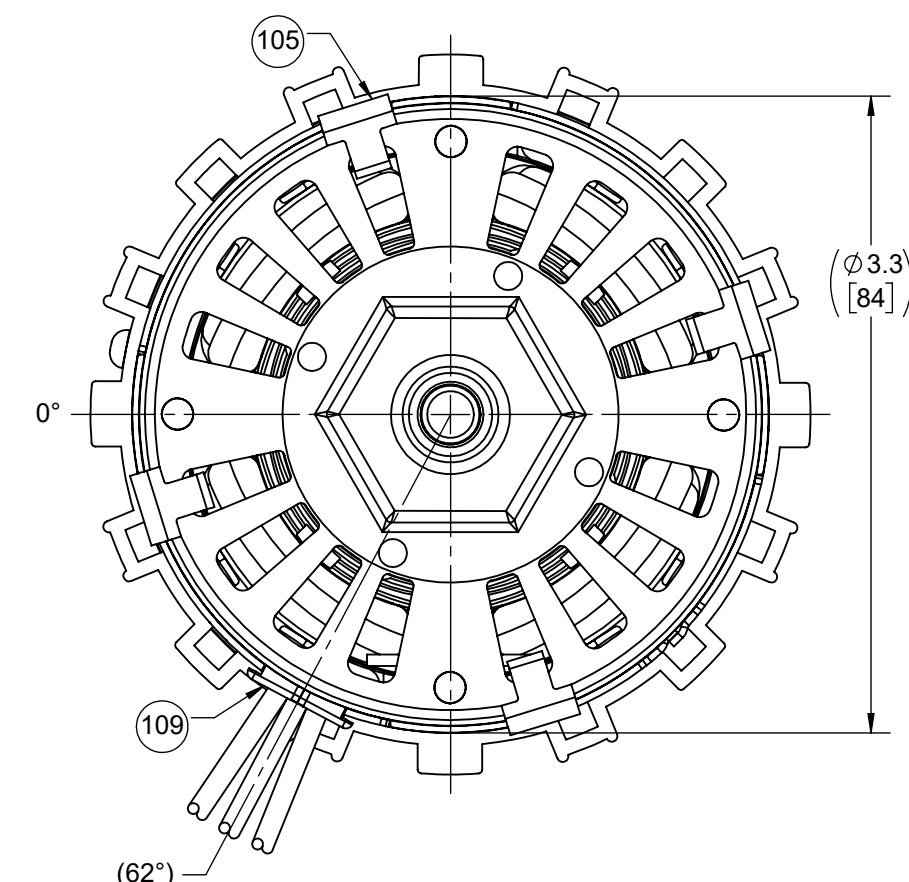
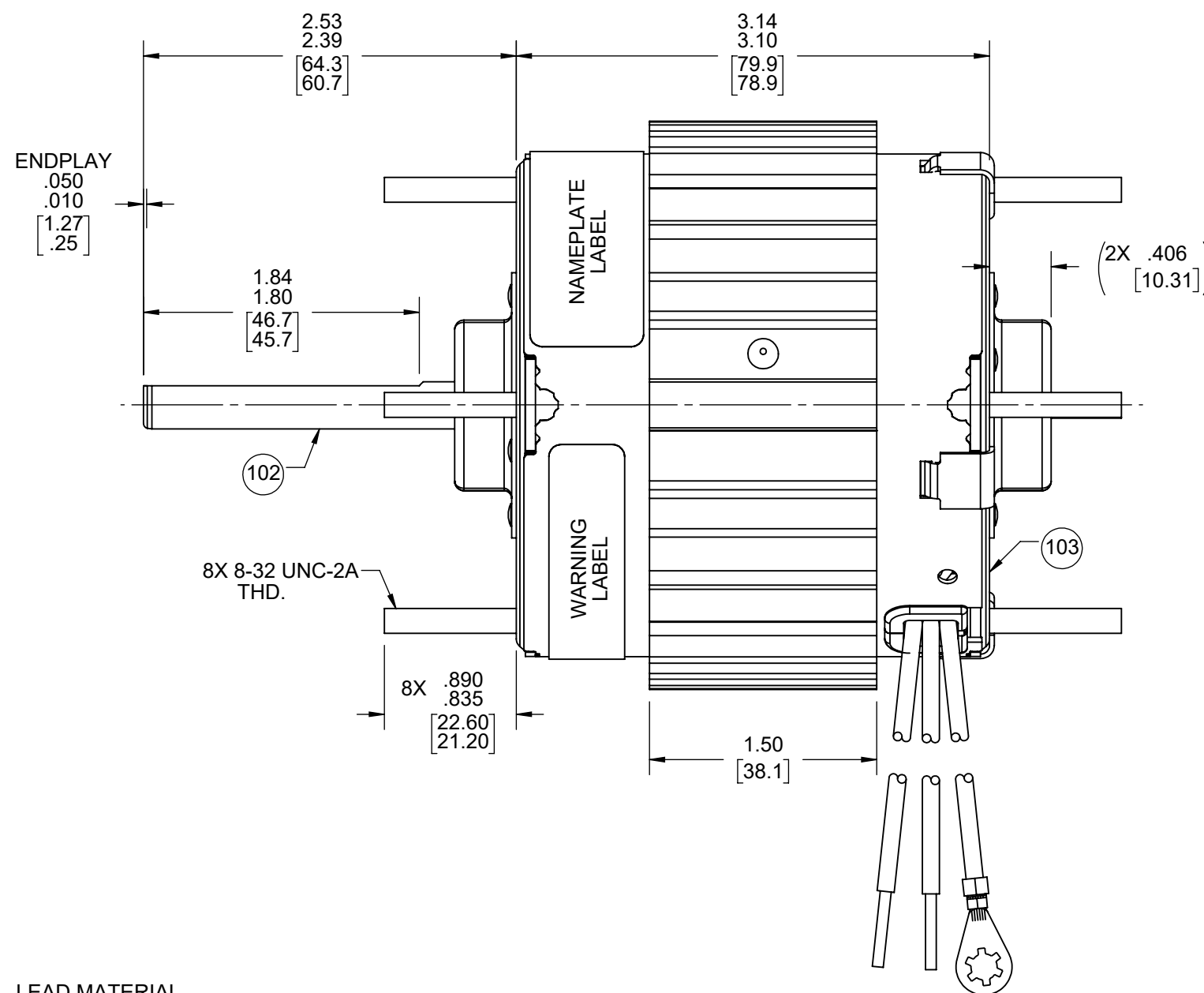
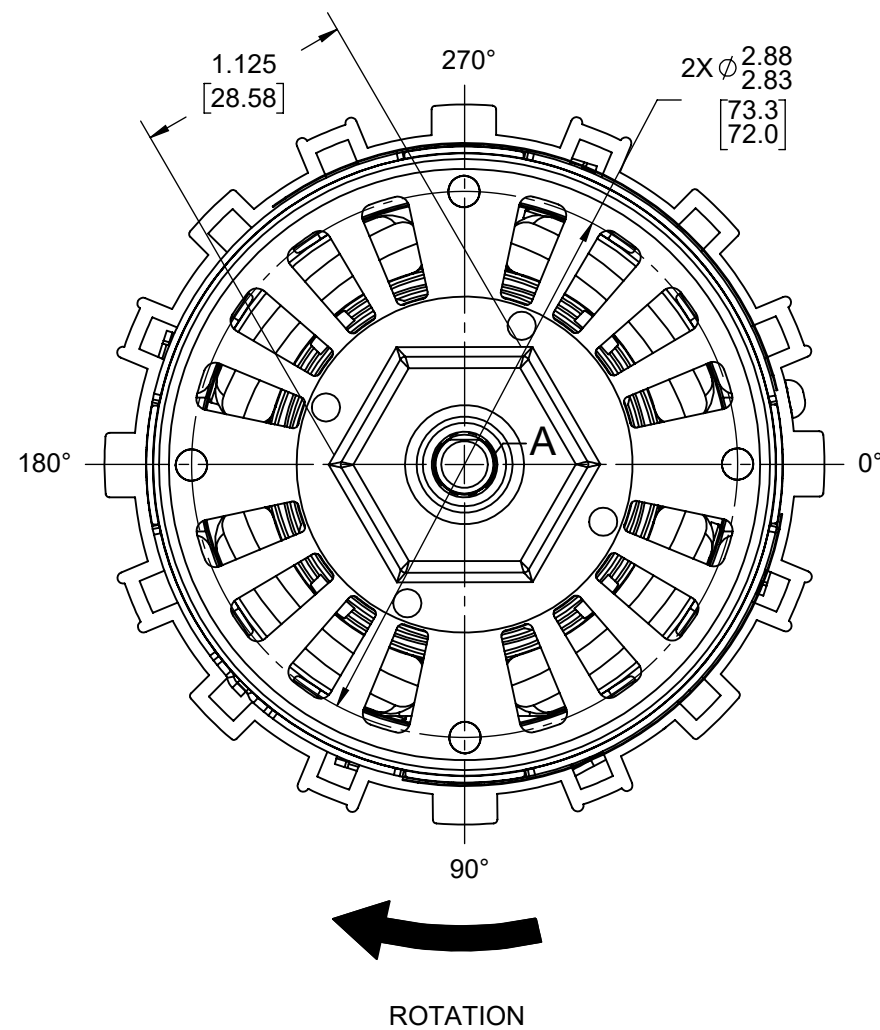
Technical Specifications

Electrical Type	Shaded Pole	Starting Method	Across The Line
Poles	4	Rotation	Clockwise Shaft End
Mounting	Extended Studs	Drive End Bearing	Sleeve
Opp Drive End Bearing	Sleeve	Frame Material	Steel
Shaft Type	Flat	Overall Length	6.08 in
Frame Length	2.91 in	Shaft Diameter	0.313 in
Shaft Extension	2.5 in		
Outline Drawing	71732238	Connection Drawing	NA

This is an uncontrolled document once printed or downloaded and is subject to change without notice. Date Created:12/22/2022

FRONT END

BACK END



LEAD MATERIAL
18 GA. 125°C 2/64 INSUL.
X-LINKED POLY. (2) BLACK,
13.00/11.00 [330.2/279.4]
.56/.44 [14.2/11.2] STRIP

GROUND LEAD MATERIAL
GRN/YEL
13.00/11.00 [330.2/279.4]
W/ RING TERMINAL
AMP 350436-2

- NOTES:
1. MOTOR HAS 416 SS SHAFT.
2. NO PACKAGING TAPE OVER CARTON LABEL.

61305815

SAFETY WARNING
This motor must be grounded in accordance with local or national electrical codes to prevent possible injury due to electrical shock



AVERTISSEMENT DE SECURITE
Ce moteur doit être fondée sur conformément à la réglementation locale ou national électrique codes pour prévenir d'éventuelles blessures en raison de choc électrique

APPLY IN A CONVENIENT LOCATION TO READ FROM BACK END

00464823

FASCO™ No. 71732238
TYPE U73B1



Assembled In Mexico
115 V 60 Hz T.P. Class B
2.18 A 1550 RPM
Cust P/N D0042 E40513
Reference 1/15 HP
Max Amb: 40°C

AO

61299553

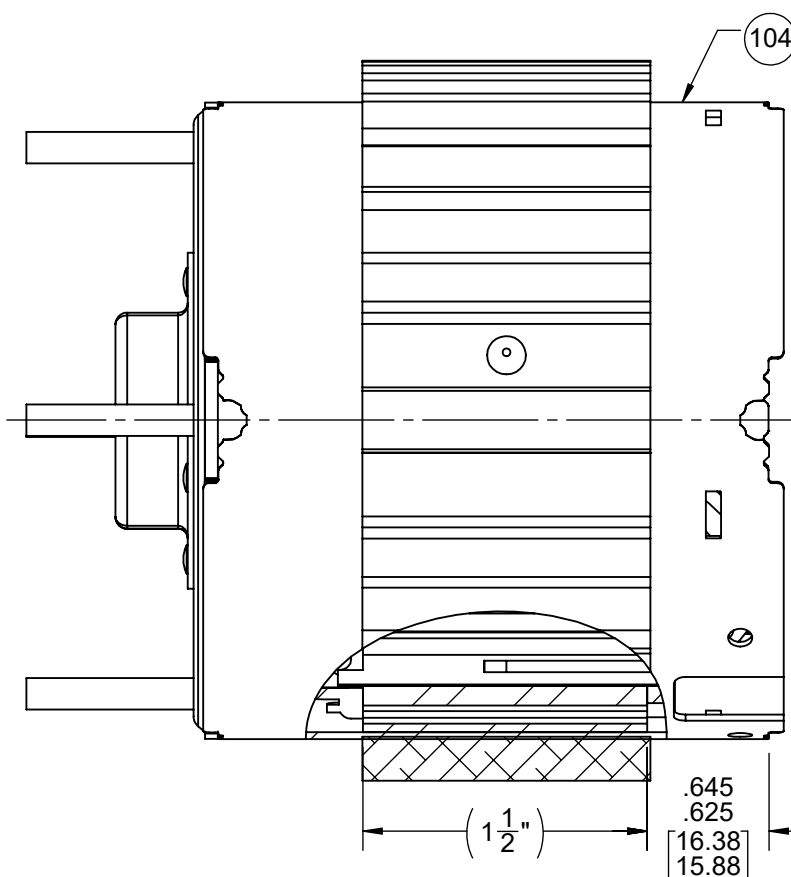
CUSTOMER:	FASCO DIST	APPLICATION:	COUNTER SALES				
CUSTOMER PN:	D0042	MOTOR WEIGHT:					
		ENVIRONMENT:	DAMP				
		MOTOR TYPE	REFERENCE SAMPLE				
		SHADED POLE					
	B 00	LA 73	FR 35				
		A V	S 06				
		C HC	E 5				
			B 3				
			A 0				
TYPICAL PERFORMANCE AT 115 VOLTS 60 HZ							
MOTOR SPEED	IDLE		LOADED		LOCKED		BREAK
	RPM	AMP	WATT	RPM	AMP	WATT	IN OZ
	1780	1.73	90	1550	2.17	157	51.1
			47.6			17.8	
						3.21	
						210	

DRAWING REVISION BD	REVISION BY SDM	REV DATE/DATE 12/13/2022	TOLERANCES (EXCEPT AS NOTED): DEC. INCH mm ANGLE .X ±0.1 [±3] ±1° .XX ±0.01 [±0.3] .XXX ±0.005 [±0.13] .XXX ±0.0005 [±0.013]	DRAWN BY M.GU	Regal Rexnord Regal Beloit America, Inc.
REQUEST NUMBER ECR-0222518	APPROVED BY KBB	DATE 12/13/2022	REMOVE BURRS & BREAK SHARP EDGES: .003/.015 [.08/.38] X 45° CORNER FILLETS: R.02 [.5] MACHINED SURFACES: .125/ mm 3.2/ INCH mm mm DIMENSIONS IN [BRACKETS] ARE FOR REFERENCE ONLY	DATE 09-10-2014	
REQUEST NUMBER DESCRIPTION ATTACH MODEL TO PRINT			APPROVED BY A.SUN	DATE 09-10-2014	DESCRIPTION OUTLINE MOTOR ASSY
COPYRIGHT (PER REVISION DATE) REGAL BELOIT AMERICA, INC. ALL RIGHTS RESERVED. PROPRIETARY AND CONFIDENTIAL INFORMATION - THIS DOCUMENT IS THE PROPERTY OF REGAL BELOIT AMERICA, INC. ("OWNER") AND CONTAINS OWNER'S PROPRIETARY INFORMATION. ANY PERSON, CORPORATION OR OTHER FIRM RECEIVING IT IS DEEMED, BY RECEIVING IT, TO AGREE THAT IT, AND/OR ANY PART OF IT, SHALL NOT BE DISCLOSED TO ANY PERSON, CORPORATION OR OTHER ENTITY, DUPLICATED, AND/OR USED, EXCEPT AS EXPRESSLY APPROVED IN WRITING IN ADVANCE BY OWNER. THIS DOCUMENT SHALL BE RETURNED TO OWNER UPON REQUEST. IT MAY BE SUBJECT TO CERTAIN RESTRICTIONS UNDER APPLICABLE EXPORT CONTROL LAWS AND REGULATIONS.			REFERENCE	MATERIAL	PROCESS/FINISH
THIRD ANGLE PROJECTION	SIZE C	DRAWING NUMBER 71732238	SHEET 1 OF 2		

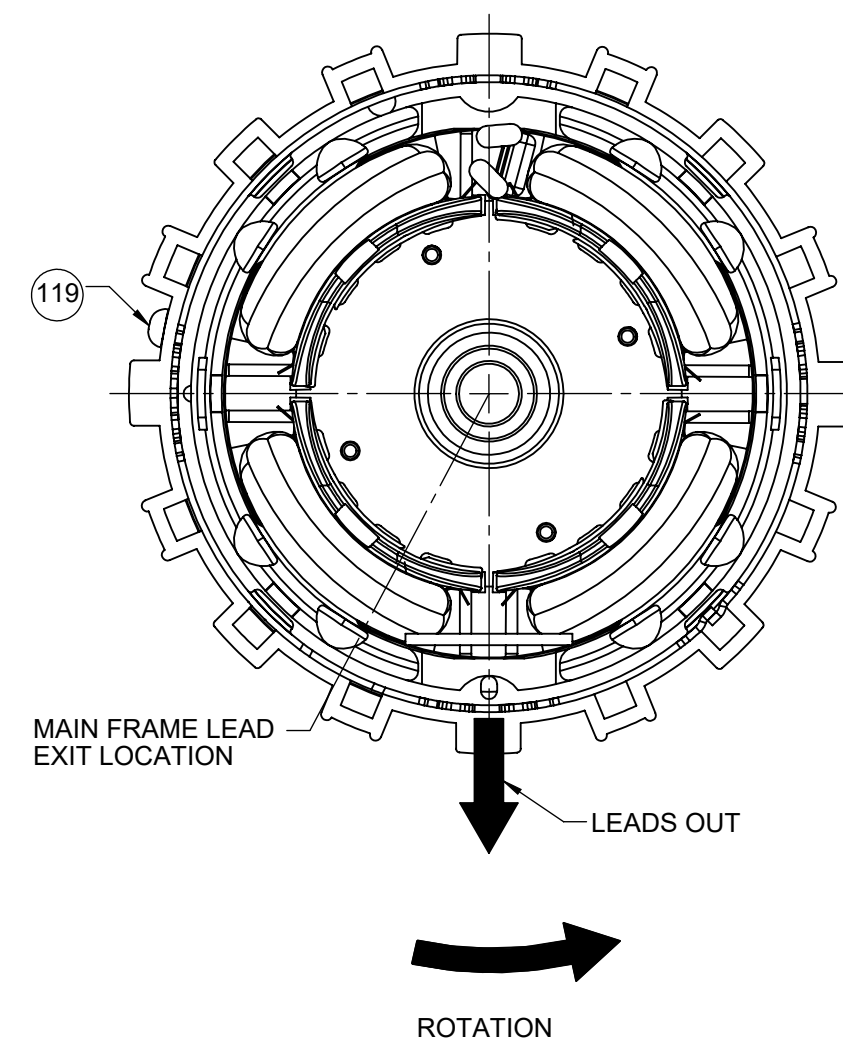
NOTES:

1. MAXIMUM TORQUE REQUIRED TO TURN MOTOR SHAFT IS 3/8 INCH-OUNCE.
2. MAKE-UP WASHERS ARE TO BE ADDED OR DELETED TO ACHIEVE REQUIRED ENDPLAY.
3. DRILL PILOT HOLE WITH 37 DRILL .300/.275 [7.62/6.99] DEEP AT CENTER OF DRILL AND PIN COOLING BAND SECURELY TO STATOR AND MAIN FRAME ASSEMBLY IN ONE PLACE.
4. PRESS STATOR IN MAIN FRAME SO THAT LEADS ARE LOCATED 28° FROM MAIN FRAME LEAD EXIT.

FRONT END



BACK END



PACKING SPECIFICATIONS

1. PACK 1 CONTAINER, 40 CONTAINER PER LAYER, 6 LAYERS PER PALLET, 240 MAX. PER PALLET, PER 88834200.
2. PLACE FILLER FOAM RING ON END OF MOTOR AND FILLER TUBE ON SHAFT EXTENSION END, PLACE MOTOR IN CONTAINER, LEADS DOWN, CLOSE FLAPS AND TAPE.
3. CARTON LABELS MUST ALL FACE ONE DIRECTION TOWARD OPEN END OF PALLET. SEE 88834408.
4. NO PACKING TAPE OVER CARTON LABEL.
- 5.
6. PLACE FLAT PAD ON PALLET, (1) BETWEEN EACH LAYER, AND (1) ON TOP LAYER OF CONTAINERS. PLACE ALL INSPECTION AND WRITING ON THE TOP FLAT PAD TO PREVENT MARKING ON CONTAINERS, PRIOR TO STRETCH WRAP.

DRAWING REVISION BD	REVISION BY SDM	REV DATE/@ DATE 12/13/2022	TOLERANCES (EXCEPT AS NOTED): DEC. INCH mm ANGLE	DRAWN BY M.GU	Regal Beloit America, Inc.
REQUEST NUMBER ECR-0222518	APPROVED BY KBB	DATE 12/13/2022	.X ±0.1 [±3] ±1° .XX ±0.01 [±0.3] .XXX ±0.005 [±0.13] .XXXX ±0.0005 [±0.013]	DATE 09-10-2014	
REQUEST NUMBER DESCRIPTION ATTACH MODEL TO PRINT			REMOVE BURRS & BREAK SHARP EDGES: .003/.015 [.08/.38] X 45° CORNER FILLETS: R.02 [.5] MACHINED SURFACES: .125/ mm 3.2 INCH mm	APPROVED BY A.SUN	DESCRIPTION OUTLINE MOTOR ASSY
<small>COPYRIGHT (PER REVISION DATE) REGAL BELOIT AMERICA, INC. ALL RIGHTS RESERVED. PROPRIETARY AND CONFIDENTIAL INFORMATION - THIS DOCUMENT IS THE PROPERTY OF REGAL BELOIT AMERICA, INC. (OWNER) AND CONTAINS OWNER'S PROPRIETARY INFORMATION. ANY PERSON, CORPORATION OR OTHER FIRM RECEIVING IT IS DEEMED, BY RECEIVING IT, TO AGREE THAT IT, AND/OR ANY PART OF IT, SHALL NOT BE DISCLOSED TO ANY PERSON, CORPORATION OR OTHER ENTITY, DUPLICATED, AND/OR USED, EXCEPT AS EXPRESSLY APPROVED IN WRITING IN ADVANCE BY OWNER. THIS DOCUMENT SHALL BE RETURNED TO OWNER UPON REQUEST. IT MAY BE SUBJECT TO CERTAIN RESTRICTIONS UNDER APPLICABLE EXPORT CONTROL LAWS AND REGULATIONS.</small>			mm DIMENSIONS IN [BRACKETS] ARE FOR REFERENCE ONLY	DATE 09-10-2014	MATERIAL
				REFERENCE	PROCESS/FINISH
				THIRD ANGLE PROJECTION	SIZE C
				DRAWING NUMBER 71732238	SHEET 2 OF 2