

PRODUCT INFORMATION PACKET

FASCO®

Model No: D672B

Catalog No: D672B

Refrigeration Motor, 1/15 HP, 1 Ph, 60 Hz, 115/208-230 V, 1550 RPM, 1 Speed, 3.3" Diameter, OAO



Regal and Fasco are trademarks of Regal Rexnord Corporation or one of its affiliated companies.

©2022 Regal Rexnord Corporation, All Rights Reserved. MC017097E

RegalRexnord



Nameplate Specifications

Output HP	1/15 Hp	Output KW	0.05 kW
Frequency	60 Hz	Voltage	115/208-230 V
Current	1.90/0.84-0.94 A	Speed	1550 rpm
Service Factor	1	Phase	1
Duty	Air Over	Insulation Class	B
Frame	3.3	Enclosure	Open Air Over
Thermal Protection	Thermally Protected	Ambient Temperature	40 °C
UL	Recognized	CSA	N
CE	N	Number of Speeds	1

Technical Specifications

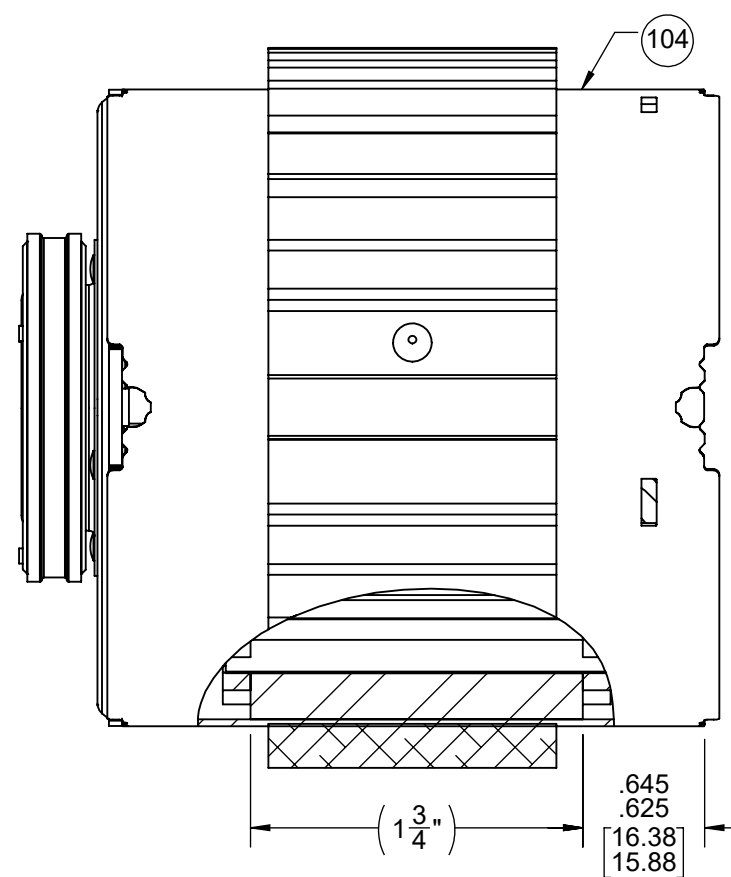
Electrical Type	Shaded Pole	Starting Method	Across The Line
Poles	4	Rotation	Clockwise Shaft End
Mounting	Extended Studs	Drive End Bearing	Ball
Opp Drive End Bearing	Ball	Frame Material	Steel
Shaft Type	Flat	Overall Length	15.86 in
Frame Length	3.07 in	Shaft Diameter	0.312 in
Shaft Extension	2.55 in		
Outline Drawing	71732167	Connection Drawing	NA

This is an uncontrolled document once printed or downloaded and is subject to change without notice. Date Created:11/29/2022

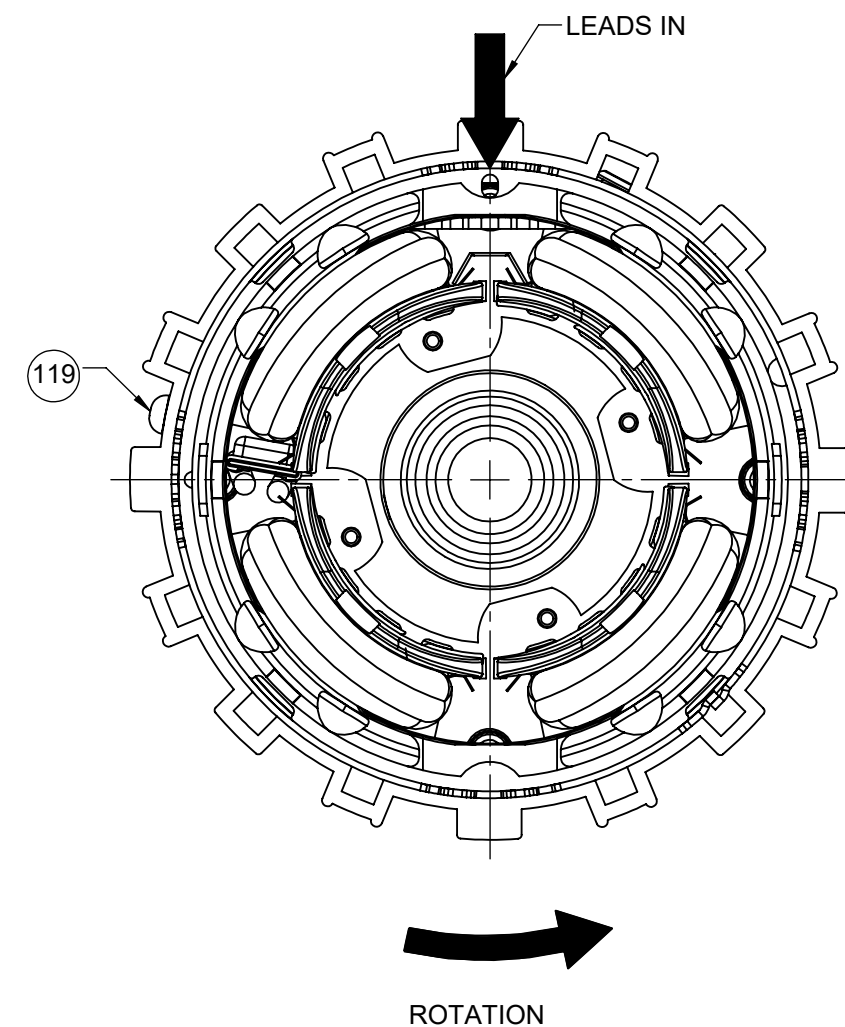
NOTES:

- 1. MAXIMUM TORQUE REQUIRED TO TURN MOTOR SHAFT IS 3/8 INCH-OUNCE.
- 2. ASSEMBLE SPRING BETWEEN WASHER AND BEARING ON FRONT END, WITH SPRING FINGERS TOWARD BEARING.
- 3. ASSEMBLE BALL BEARINGS TO BEARING RETAINERS PER 88834419.

FRONT END



BACK END



BLAST COOLED SPECIFICATIONS

- 1. FAN MUST TRACK WITHIN .035 [.89] AND HAVE .10 [2.5] MIN. CLEARANCE TO BEARING BOSS AFTER PRESS ON OPERATION.
- 2. DIMENSION OVER END FRAMES 3.31/3.27 [.84.1/.83.1].
- 3. DRILL PILOT HOLE WITH A #37 DRILL .300/.275 [7.62/6.99] DEEP AT CENTER OF DRILL AND PIN COOLING BAND SECURELY TO STATOR AND MAIN FRAME ASSY IN ONE PLACE.
- 4. ASSEMBLE FAN COVER PER 88834269.

PACKING SPECIFICATIONS

- 1. PACK PER 88834200. 1 PER CONTAINER, 40 CONTAINERS PER LAYER, 8 LAYERS PER PALLET, 240 MAX. PER PALLET.
- 2. PLACE FILLER TUBE OVER SHAFT EXTENSION AND PLACE IN CARTON.
- 3. PLACE PC 130 KIT IN CONTAINER WITH MOTOR.
- 4. CARTON LABELS MUST ALL FACE ONE DIRECTION TOWARD THE OPEN END OF THE PALLET. SEE 88834408.
- 5. PLACE (1) FLAT PAD ON PALLET, AND (1) BETWEEN EACH LAYER, AND (1) ON TOP.

DRAWING REVISION ED	REVISION BY SDM	REV DATE/DATE 11/9/2022	TOLERANCES (EXCEPT AS NOTED):		DRAWN BY M.GU	Regal Beloit America, Inc.
REQUEST NUMBER ECR-0221677	APPROVED BY MLS	DATE 11/9/2022	DEC. .X ±0.1 [±3] ±1°	INCH .XX ±0.01 [±0.3]	DATE 03/07/2016	
REQUEST NUMBER DESCRIPTION ATTACH MODEL TO PRINT			.XXX ±0.005 [±0.13]	.XXXX ±0.0005 [±0.013]	APPROVED BY C.ZHANG	DESCRIPTION OUTLINE MOTOR ASSY
<small>COPYRIGHT (PER REVISION DATE) REGAL BELOIT AMERICA, INC. ALL RIGHTS RESERVED. PROPRIETARY AND CONFIDENTIAL INFORMATION - THIS DOCUMENT IS THE PROPERTY OF REGAL BELOIT AMERICA, INC. ("OWNER") AND CONTAINS OWNER'S PROPRIETARY INFORMATION. ANY PERSON, CORPORATION OR OTHER FIRM RECEIVING IT IS DEEMED, BY RECEIVING IT, TO AGREE THAT IT, AND/OR ANY PART OF IT, SHALL NOT BE DISCLOSED TO ANY PERSON, CORPORATION OR OTHER ENTITY, DUPLICATED, AND/OR USED, EXCEPT AS EXPRESSLY APPROVED IN WRITING IN ADVANCE BY OWNER. THIS DOCUMENT SHALL BE RETURNED TO OWNER UPON REQUEST. IT MAY BE SUBJECT TO CERTAIN RESTRICTIONS UNDER APPLICABLE EXPORT CONTROL LAWS AND REGULATIONS.</small>			REMOVE BURRS & BREAK SHARP EDGES: .003/.015 [.08/.38] X 45°		DATE 03/07/2016	MATERIAL PROCESS/FINISH BLACK
			CORNER FILLETS: R.02 [.5]		MACHINED SURFACES: .125/3.2 INCH/mm	
			mm DIMENSIONS IN [BRACKETS] ARE FOR REFERENCE ONLY		THIRD ANGLE PROJECTION	SIZE C
					DRAWING NUMBER 71732167	SHEET 2 OF 2