

PRODUCT INFORMATION PACKET

FASCO®

Model No: D351

Catalog No: D351

Ventilation Motor, 1/20 HP, 1 Ph, 60 Hz, 115/230 V, 1550 RPM, 1 Speed, 3.3" Diameter, TEFC



Regal and Fasco are trademarks of Regal Rexnord Corporation or one of its affiliated companies.
©2023 Regal Rexnord Corporation, All Rights Reserved. MC017097E

RegalRexnord



Nameplate Specifications

Output HP	1/20 Hp	Output KW	0.04 kW
Frequency	60 Hz	Voltage	115/230 V
Current	1.52/0.76 A	Speed	1550 rpm
Phase	1	Duty	Air Over
Insulation Class	B	Frame	3.3
Enclosure	Totally Enclosed Fan Cooled	Thermal Protection	Thermally Protected
Ambient Temperature	40 °C	UL	Recognized
CSA	N	CE	N
Number of Speeds	1		

Technical Specifications

Electrical Type	Shaded Pole	Starting Method	Across The Line
Poles	4	Rotation	Clockwise Shaft End
Mounting	Extended Studs	Drive End Bearing	Ball
Opp Drive End Bearing	Ball	Frame Material	Steel
Shaft Type	Flat	Overall Length	9.21 in
Frame Length	4.22 in	Shaft Diameter	0.312 in
Shaft Extension	4.5 in		
Connection Drawing	SEE OUTLINE	Outline Drawing	71732157

This is an uncontrolled document once printed or downloaded and is subject to change without notice. Date Created:01/11/2023

4

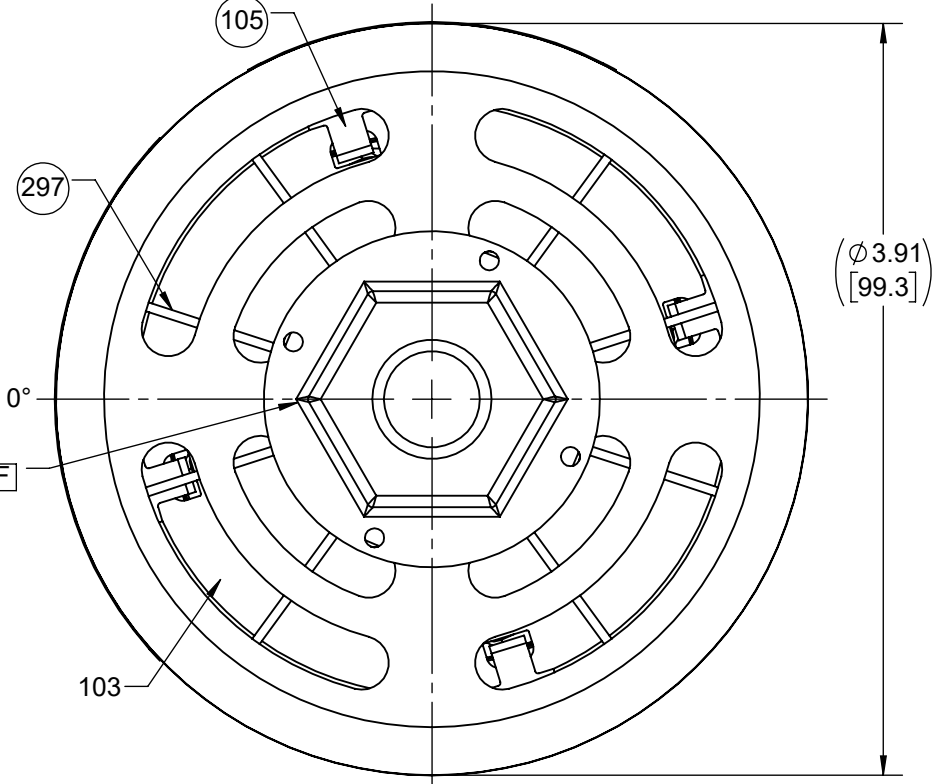
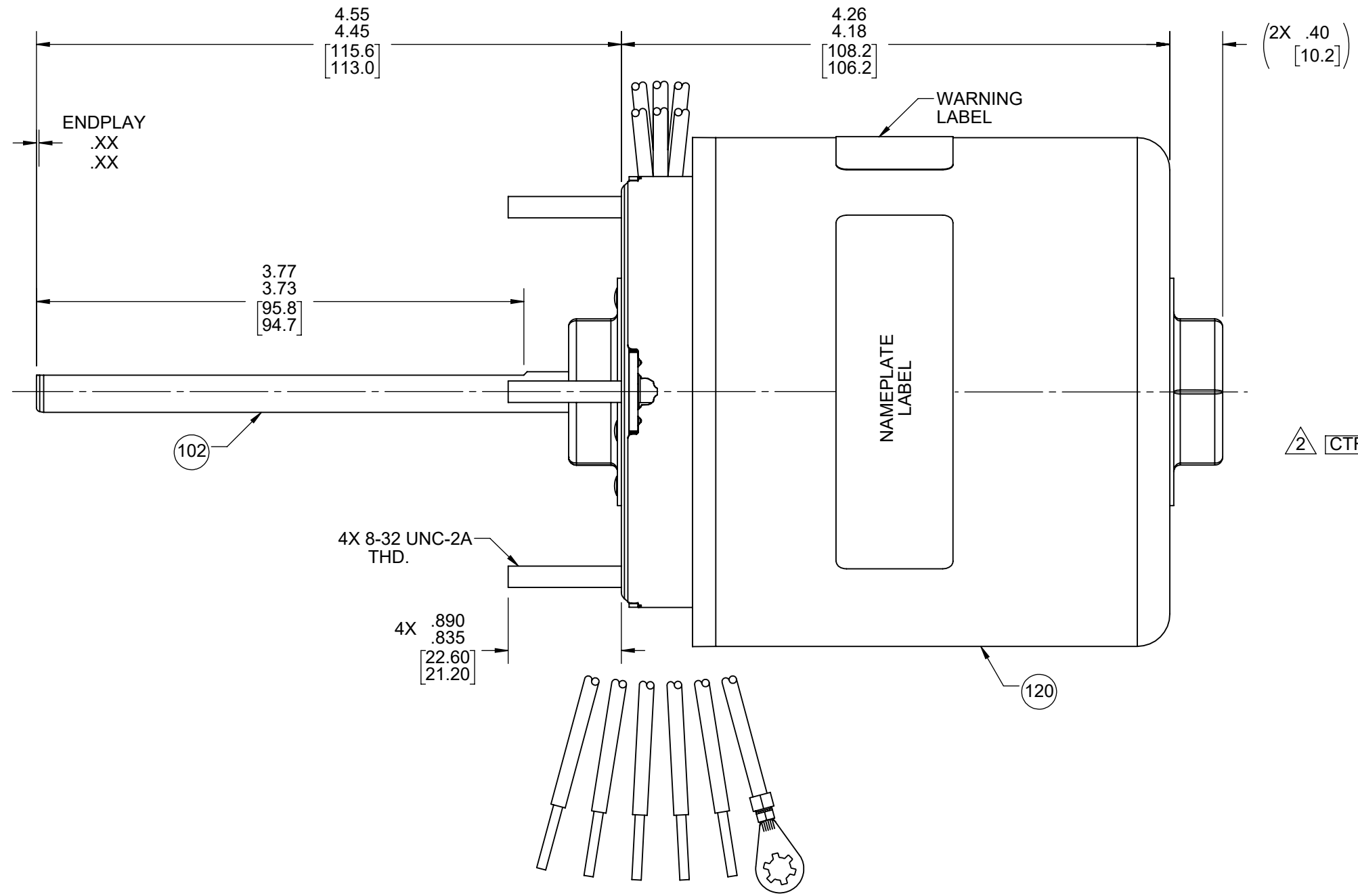
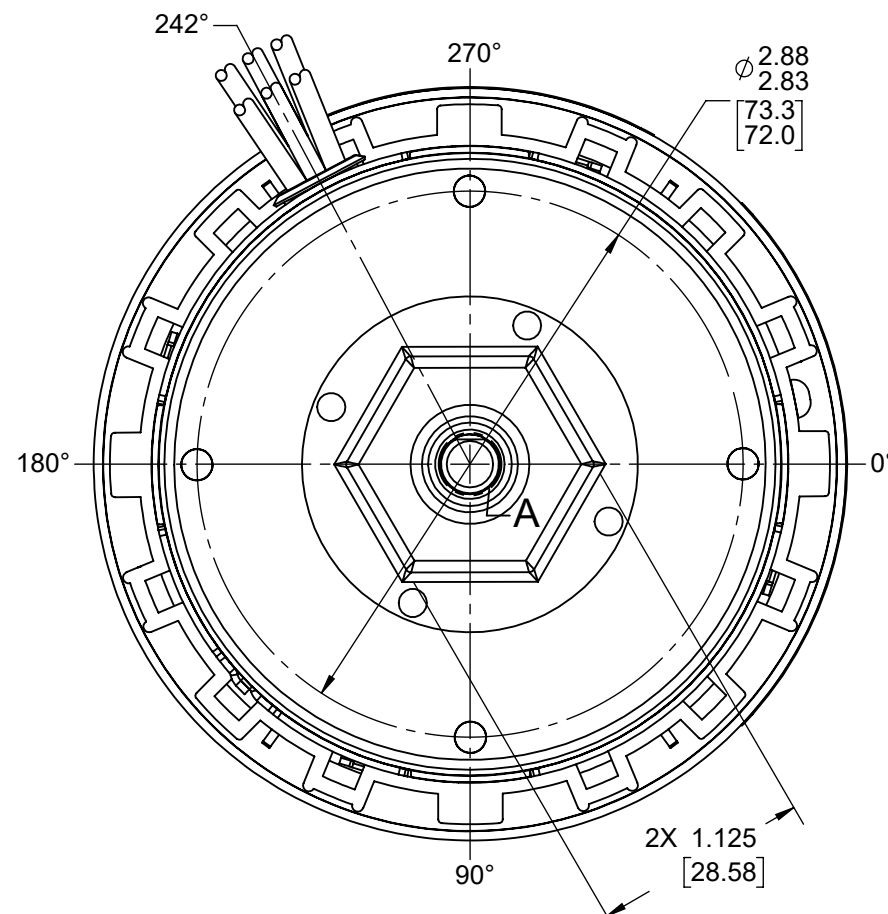
3

2

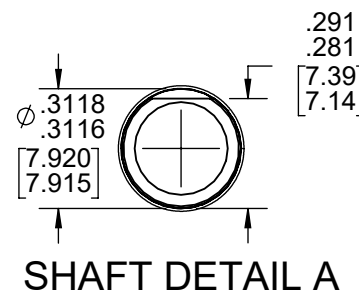
1

FRONT END

BACK END



ROTATION



LEAD MATERIAL
 18 GA. 125°C 2/64 INSUL.
 X-LINKED POLY. BLACK,
 BLUE, ORANGE, RED,
 AND YELLOW
 13.00/11.00 [330.2/279.4]
 .56/.44 [14.2/11.2] STRIP
 GROUND LEAD MATERIAL
 GRN/YEL
 13.00/11.00 [330.2/279.4]
 W/ RING TERMINAL
 AMP 350436-2

61305568

00464537

00469252

- NOTES:
- MOTOR HAS 416 SS SHAFT.
 - POINT ON HEX CAP MUST BE LOCATED 0°
 - NO PACKAGING TAPE OVER CARTON LABEL.

SAFETY WARNING
 This motor must be grounded in accordance with local or national electrical codes to prevent possible injury due to electrical shock

AVERTISSEMENT DE SÉCURITÉ
 Ce moteur doit être fondée sur conformément à la réglementation locale ou national électrique codes pour prévenir d'éventuelles blessures en raison de choc électrique

FASCO™
 Assembled In Mexico
 No. 71732157 TYPE U73B1 T.P. AO
 115/230 V 60 Hz Class B
 1.52/.76 A 1550 RPM
 Model D351 E40513
 Reference 1/20 HP
 Seald Ball Bearing
 Max Amb 40°C

Regal Rexnord

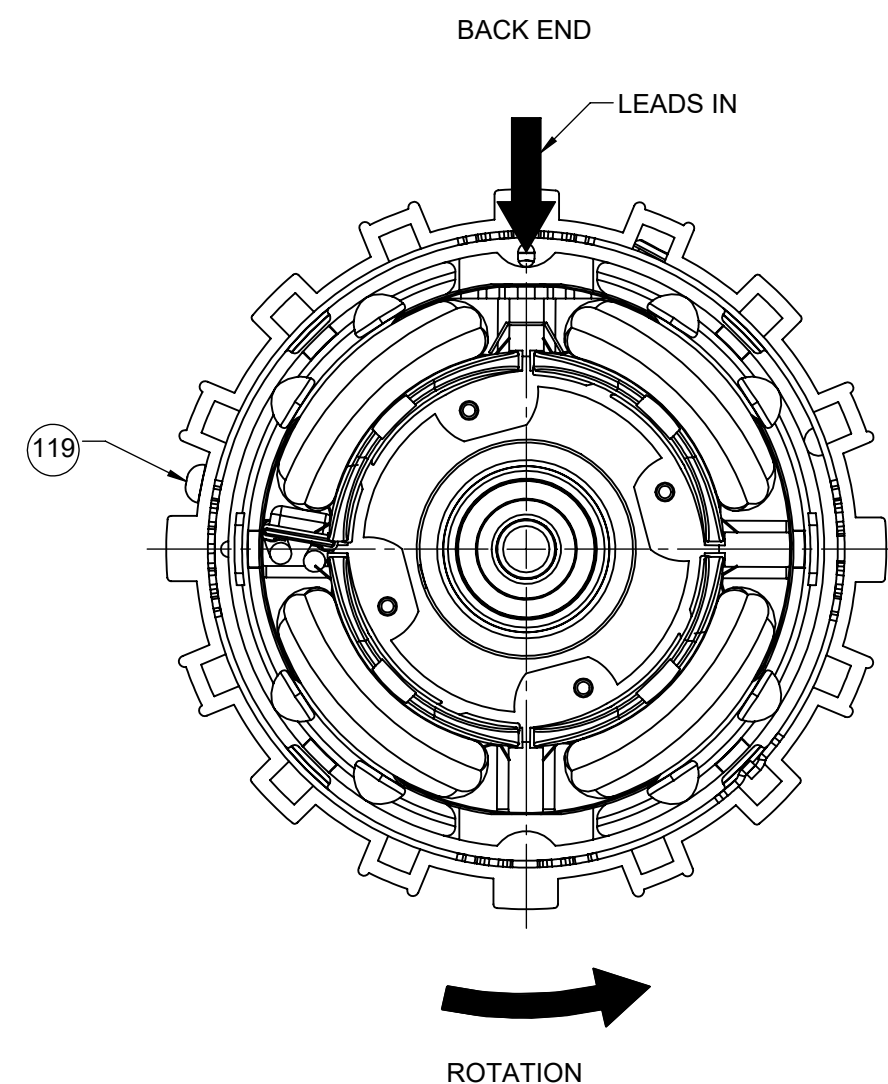
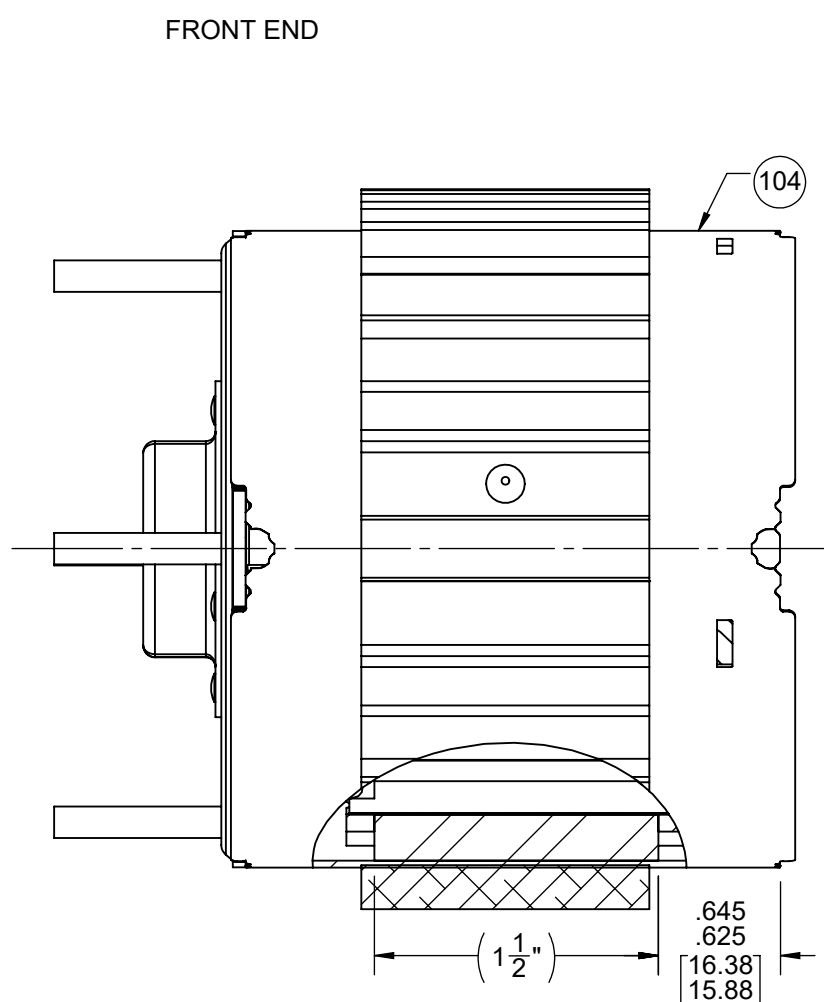
Connection Diagram
 115V~ 230V~
 Orm — Line Orm — Line
 Yel — Line Yel — Line
 Blu — Line Blu — Line
 Red — Line Red — Line
 Blk — Ins Blk — Ins
 Grn/Yel — Grd

CUSTOMER:	D351	APPLICATION:	COUNTER SALES
CUSTOMER PN:	FASCO DIST.	MOTOR WEIGHT:	
	UP	ENVIRONMENT:	DAMP
		MOTOR TYPE	REFERENCE SAMPLE
		SHADED POLE	X-0006268-3
		B 00 LA 73 FR 28 A T S 06 C DP E 9 B 0 A 0	
TYPICAL PERFORMANCE AT 115/230 VOLTS 60 HZ			
		IDLE	LOADED
MOTOR SPEED	RPM	AMP WATT IN OZ	RPM AMP WATT IN OZ
115 V	1778	1.18 68 37.5	1550 1.52 120 18.0
230 V	1778	.59 66.9 37.2	1550 .76 119 17.9
			LOCKED BREAK
			AMP WATT IN OZ
			1.12 173 39.7

DRAWING REVISION	REVISION BY	REV DATE/@ DATE	TOLERANCES (EXCEPT AS NOTED):	DRAWN BY	Regal Rexnord Regal Beloit America, Inc.
DE	SDM	11/14/2022	DEC. INCH mm ANGLE	M.GU	
REQUEST NUMBER	APPROVED BY	DATE	.X ±0.1 [±3]	DATE	OUTLINE MOTOR ASSY
ECR-0222125	MLS	11/14/2022	.XX ±0.01 [±0.3]	06-18-2014	
REQUEST NUMBER DESCRIPTION			.XXX ±0.005 [±0.13]	APPROVED BY	DESCRIPTION
ATTACH MODEL TO PRINT			.XXXX ±0.0005 [±0.013]	A.SUN	
COPYRIGHT (PER REVISION DATE) REGAL BELOIT AMERICA, INC. ALL RIGHTS RESERVED. PROPRIETARY AND CONFIDENTIAL INFORMATION - THIS DOCUMENT IS THE PROPERTY OF REGAL BELOIT AMERICA, INC. (OWNER) AND CONTAINS OWNER'S PROPRIETARY INFORMATION. ANY PERSON, CORPORATION OR OTHER FIRM RECEIVING IT IS DEEMED, BY RECEIVING IT, TO AGREE THAT IT, AND/OR ANY PART OF IT, SHALL NOT BE DISCLOSED TO ANY PERSON, CORPORATION OR OTHER ENTITY, DUPLICATED, AND/OR USED, EXCEPT AS EXPRESSLY APPROVED IN WRITING IN ADVANCE BY OWNER. THIS DOCUMENT SHALL BE RETURNED TO OWNER UPON REQUEST. IT MAY BE SUBJECT TO CERTAIN RESTRICTIONS UNDER APPLICABLE EXPORT CONTROL LAWS AND REGULATIONS.			REMOVE BURRS & BREAK SHARP EDGES: .003/.015 [.08/.38] X 45° CORNER FILLETS: R.02 [.5] MACHINED SURFACES: ±.25/ mm 3.2/ INCH mm	DATE	MATERIAL
			mm DIMENSIONS IN [BRACKETS] ARE FOR REFERENCE ONLY	06-18-2014	
				REFERENCE	PROCESS/FINISH
				THIRD ANGLE PROJECTION	BLACK PAINT
				SIZE C	DRAWING NUMBER
					71732157
					SHEET
					1 OF 2

NOTES:

- 1. MAXIMUM TORQUE REQUIRED TO TURN MOTOR SHAFT IS 3/8 INCH-OUNCE.
- 2. ASSEMBLE SPRING BETWEEN WASHER AND BEARING ON BACK END WITH SPRING FINGERS TOWARDS BEARING.
- 3. ASSEMBLE BALL BEARINGS TO BEARING RETAINERS PER 88834419.



BLAST COOLED SPECIFICATIONS

- 1. FAN MUST TRACK WITHIN .035 [.89] AND HAVE .10 [2.5] MIN. CLEARANCE TO BEARING BOSS AFTER PRESS ON OPERATION.
- 2. DIMENSION OVER END FRAMES 3.06/3.02 [77.7/76.7].
- 3. DRILL PILOT HOLE WITH A #37 DRILL .300/.275 [7.62/6.99] DEEP AT CENTER OF DRILL AND PIN COOLING BAND SECURELY TO STATOR AND MAIN FRAME ASSY, (1) PLACE.
- 4. ASSEMBLE FAN COVER PER 88834269.

PACKING SPECIFICATIONS

- 1. PACK PER 88834200, 1 PER CONTAINER, 28 CONTAINERS PER LAYER, 5 LAYERS PER PALLET, 140 MAX. PER PALLET.
- 2. PLACE FILLER TUBE ON SHAFT EXTENSION END AND FILLER FOAM RING ON THE BACK OF MOTOR AND PLACE IN CARTON.
- 3. CARTON LABELS MUST ALL FACE ONE DIRECTION TOWARD THE OPEN END OF THE PALLET. SEE 88834408.
- 4. PLACE FLAT PAD ON PALLET, (1) BETWEEN EACH LAYER AND (1) ON TOP LAYER OF CARTON.

DRAWING REVISION DE	REVISION BY SDM	REV DATE/@ DATE 11/14/2022	TOLERANCES (EXCEPT AS NOTED): DEC. INCH mm ANGLE	DRAWN BY M.GU	Regal Beloit America, Inc.
REQUEST NUMBER ECR-0222125	APPROVED BY MLS	DATE 11/14/2022	.X ±0.1 [±3] ±1° .XX ±0.01 [±0.3] .XXX ±0.005 [±0.13] .XXXX ±0.0005 [±0.013]	DATE 06-18-2014	
REQUEST NUMBER DESCRIPTION ATTACH MODEL TO PRINT			REMOVE BURRS & BREAK SHARP EDGES: .003/.015 [.08/.38] X 45° CORNER FILLETS: R.02 [.5] MACHINED SURFACES: .125/ mm 3.2 INCH/mm	APPROVED BY A.SUN	DESCRIPTION OUTLINE MOTOR ASSY
COPYRIGHT (PER REVISION DATE) REGAL BELOIT AMERICA, INC. ALL RIGHTS RESERVED. PROPRIETARY AND CONFIDENTIAL INFORMATION - THIS DOCUMENT IS THE PROPERTY OF REGAL BELOIT AMERICA, INC. (OWNER) AND CONTAINS OWNER'S PROPRIETARY INFORMATION. ANY PERSON, CORPORATION OR OTHER FIRM RECEIVING IT IS DEEMED, BY RECEIVING IT, TO AGREE THAT IT, AND/OR ANY PART OF IT, SHALL NOT BE DISCLOSED TO ANY PERSON, CORPORATION OR OTHER ENTITY, DUPLICATED, AND/OR USED, EXCEPT AS EXPRESSLY APPROVED IN WRITING IN ADVANCE BY OWNER. THIS DOCUMENT SHALL BE RETURNED TO OWNER UPON REQUEST. IT MAY BE SUBJECT TO CERTAIN RESTRICTIONS UNDER APPLICABLE EXPORT CONTROL LAWS AND REGULATIONS.			THIRD ANGLE PROJECTION	DATE 06-18-2014	MATERIAL
			mm DIMENSIONS IN [BRACKETS] ARE FOR REFERENCE ONLY	REFERENCE	PROCESS/FINISH BLACK PAINT
				SIZE C	DRAWING NUMBER 71732157
					SHEET 2 OF 2