

# PRODUCT INFORMATION PACKET

FASCO®

Model No: D218  
Catalog No: D218

Fan and Blower Motor, 1/20 HP, 1 Ph, 60 Hz, 115 V, 3200 RPM, 1 Speed, 3.3" Diameter, TEAO



Regal and Fasco are trademarks of Regal Rexnord Corporation or one of its affiliated companies.  
©2022 Regal Rexnord Corporation, All Rights Reserved. MC017097E

RegalRexnord



**Nameplate Specifications**

Output HP	1/20 Hp	Output KW	0.04 kW
Frequency	60 Hz	Voltage	115 V
Current	.8 A	Speed	3200 rpm
Service Factor	1	Phase	1
Duty	Air Over	Insulation Class	B
Frame	3.3	Enclosure	Totally Enclosed Air Over
Thermal Protection	Thermally Protected	Ambient Temperature	40 °C
UL	Recognized	CSA	Y
CE	N	Number of Speeds	1

**Technical Specifications**

Electrical Type	Permanent Split Capacitor	Starting Method	Across The Line
Poles	2	Rotation	Reversible
Mounting	Extended Studs	Drive End Bearing	Ball
Opp Drive End Bearing	Ball	Frame Material	Steel
Shaft Type	Flat	Overall Length	6.75 in
Frame Length	3.20 in	Shaft Diameter	0.312 in
Shaft Extension	2.30 in		
Outline Drawing	71621073	Connection Drawing	00469122

This is an uncontrolled document once printed or downloaded and is subject to change without notice. Date Created:11/29/2022

4

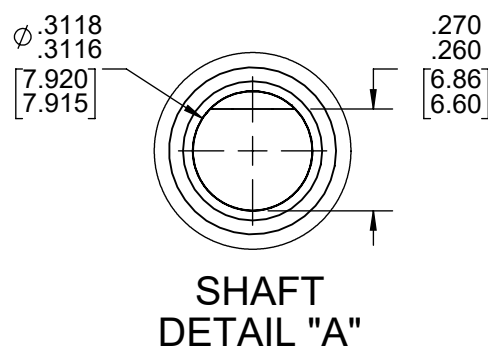
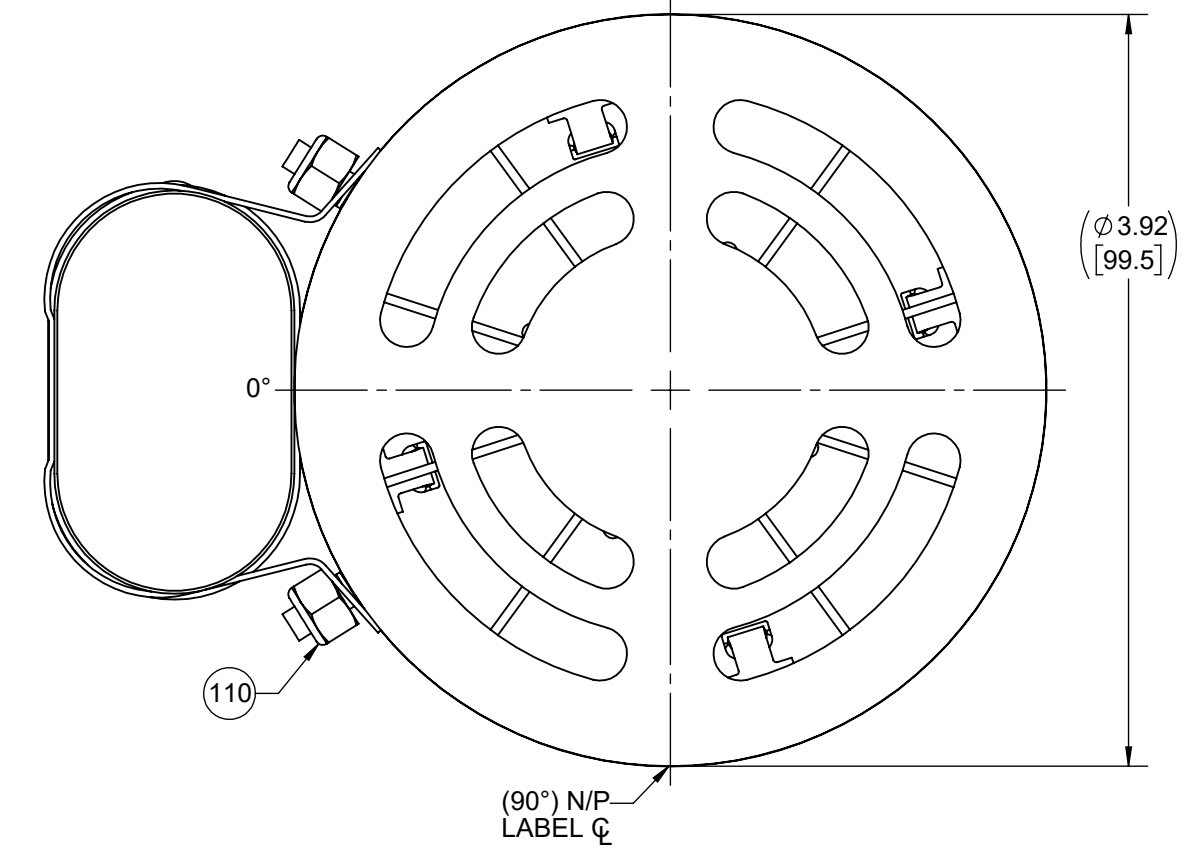
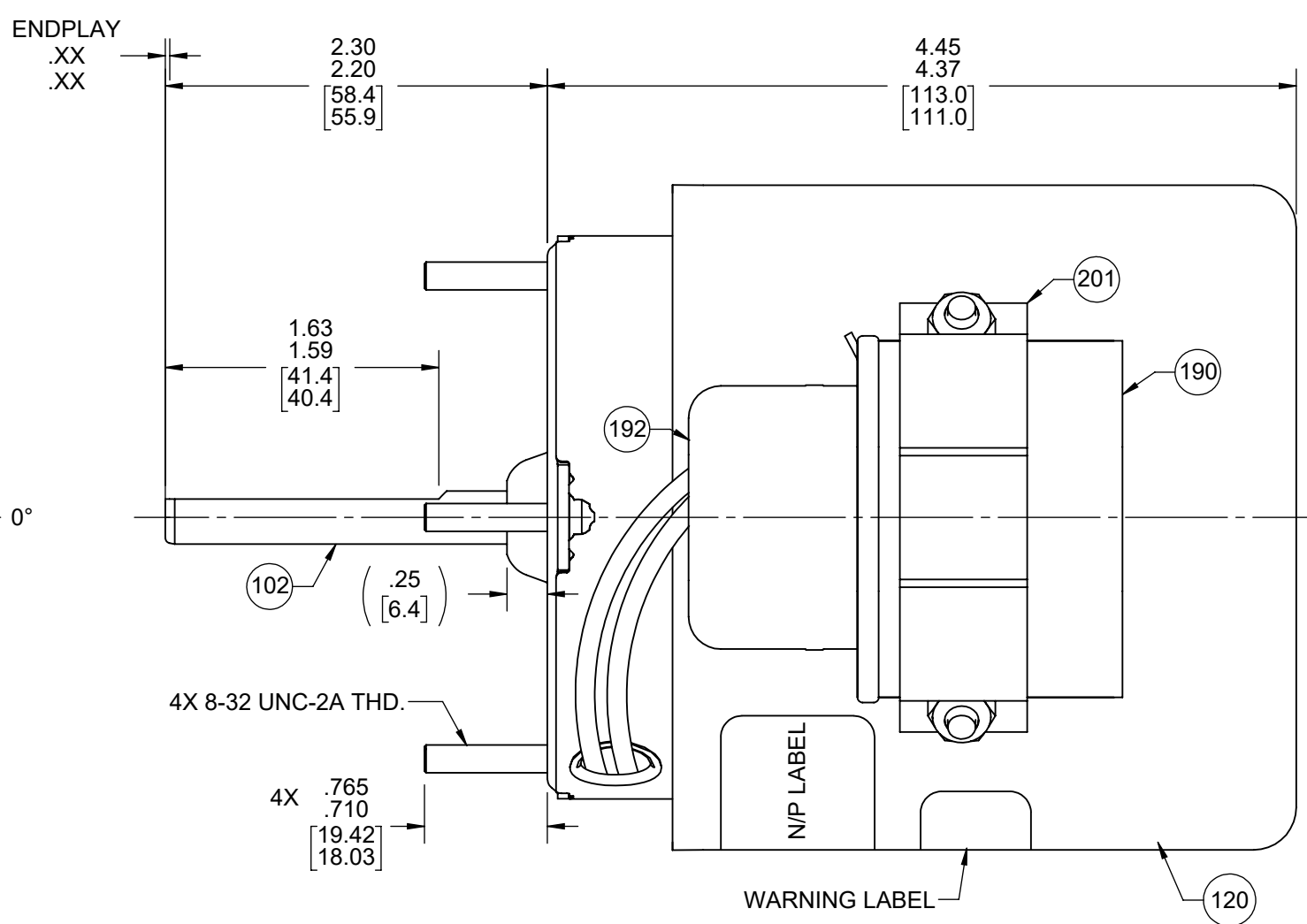
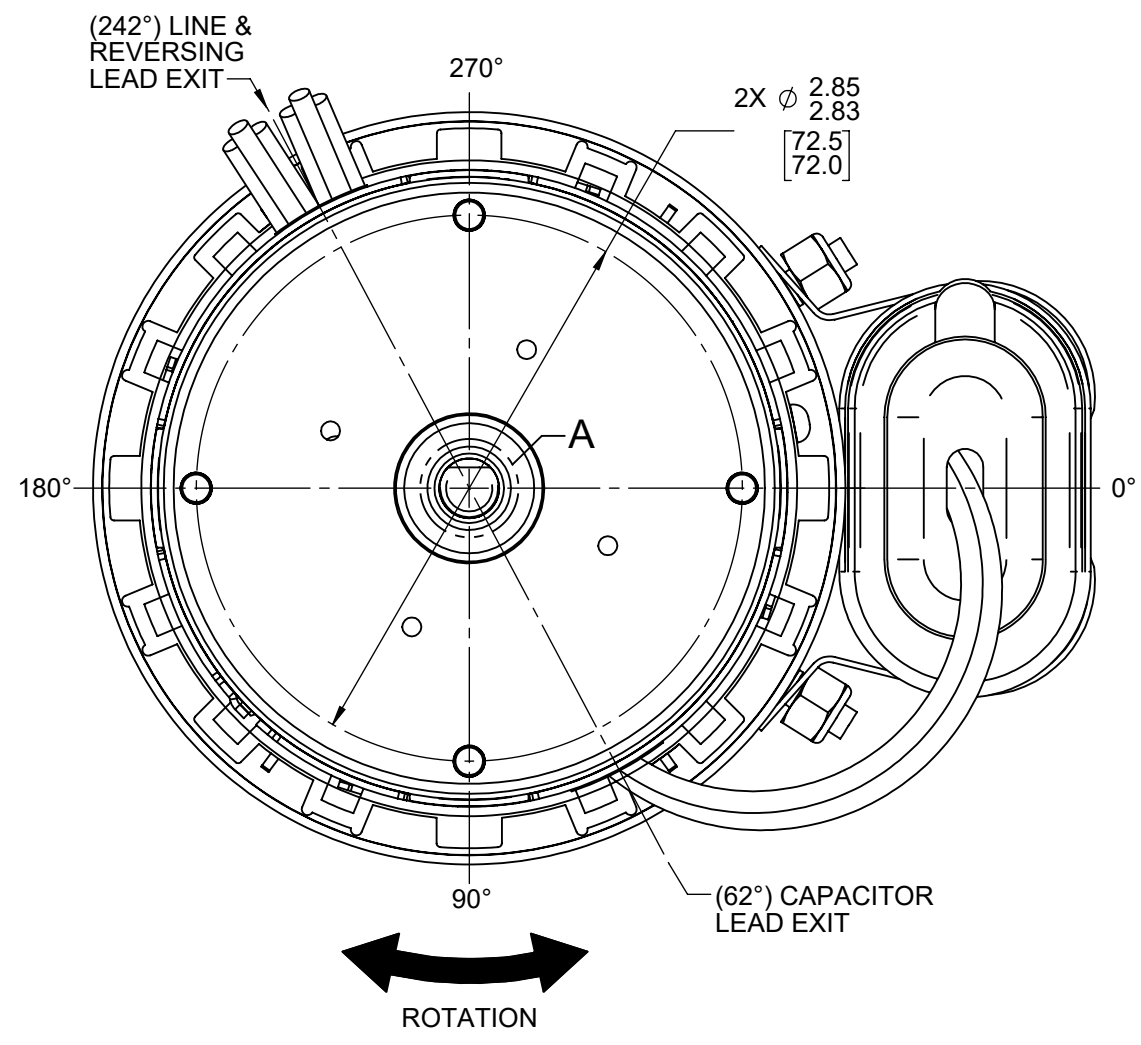
3

2

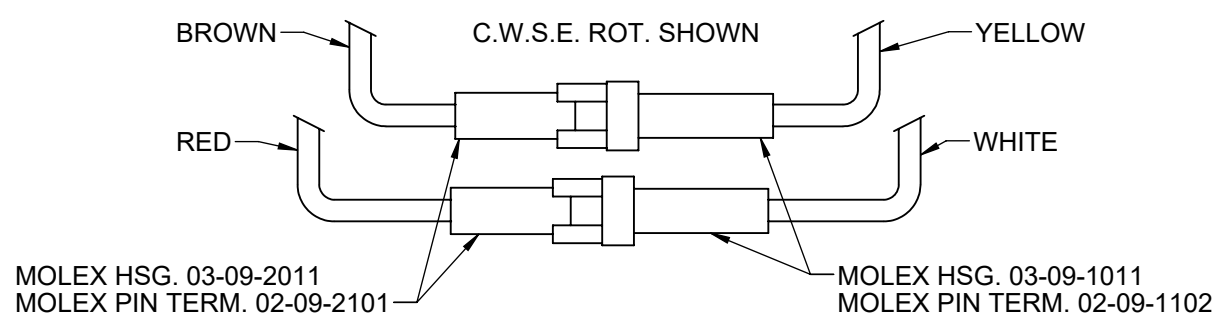
1

FRONT END

BACK END



LEAD MATERIAL  
 18 GA. 2/64 INSUL. 125° C.  
 X-LINKED POLY. (2) BLACK  
 14.00/12.00 [366.6/304.8]  
 .56/.44 [14.2/11.2] STRIP  
 (2) BLUE CAPACITOR LEADS  
 6.00/4.00 [152.4/101.6]  
 W/ FFLAG TERMINALS  
 AMP 42742-2  
 REVERSING LEADS  
 RED, BROWN, YELLOW,  
 AND WHITE  
 4.00/3.00 [101.6/76.2]



TO REVERSE ROTATION INTERCHANGE RED AND BROWN LEADS  
 MOTOR MUST HAVE C.W.S.E. CONNECTION WHEN SHIPPING

NOTES:  
 1. NO PACKAGING TAPE OVER CARTON LABEL.

CUSTOMER:	FASCO DIST.	APPLICATION:	PUMP		
CUSTOMER PN:	D218	MOTOR WEIGHT:	4.24 LBS.		
		ENVIRONMENT:	DRY		
MOTOR TYPE REFERENCE SAMPLE SAMPLE REV					
P. S. C.					
B	LA	FR	A	S	
00	62	28	T	03	
C	E	B	A		
AH	5	0	0		
TYPICAL PERFORMANCE AT 115 VOLTS 60 HZ					
CAP. 4 MFD 370 VAC					
MOTOR SPEED	IDLE		LOADED		BREAK
	RPM	WATT	RPM	WATT	
C.W.L.E.	3555	.26	3200	.61	17.5
		30		70	
		15.8		6.0	
C.C.W.L.E.	3545	.30	3200	.75	17.5
		32		79	
		16.0		6.0	
				1.1	
				130	

61305568

**SAFETY WARNING**  
 This motor must be grounded in accordance with local or national electrical codes to prevent possible injury due to electrical shock

**AVERTISSEMENT DE SECURITE**  
 Ce moteur doit être fondée sur conformément à la réglementation locale ou national électrique codes pour prévenir d'éventuelles blessures en raison de choc électrique

LOCATE IN A CONVENIENT LOCATION

00464072 00469122

**FASCO™**

Assembled in Mexico  
 No. 71621073 TYPE U62B1 TEAO LR6319  
 115 V 60 Hz Class B 1/20 HP  
 0.8 A 3200 RPM Sealed Ball Brg  
 Cust P/N D218 Thermally Protected  
 Max Amb 40° C

Connection Diagram  
 C.C.W.S.E. C.W.S.E.  
 Blk — Line Blk — Line  
 Blk — Line Blk — Line  
 Yel — Ins Wht — Ins  
 Red — Ins Red — Ins  
 Wht — Ins Yel — Ins  
 Brn — Ins Blu — Ins  
 Blu — Ins Blu — Ins

4 MFD/370 VAC

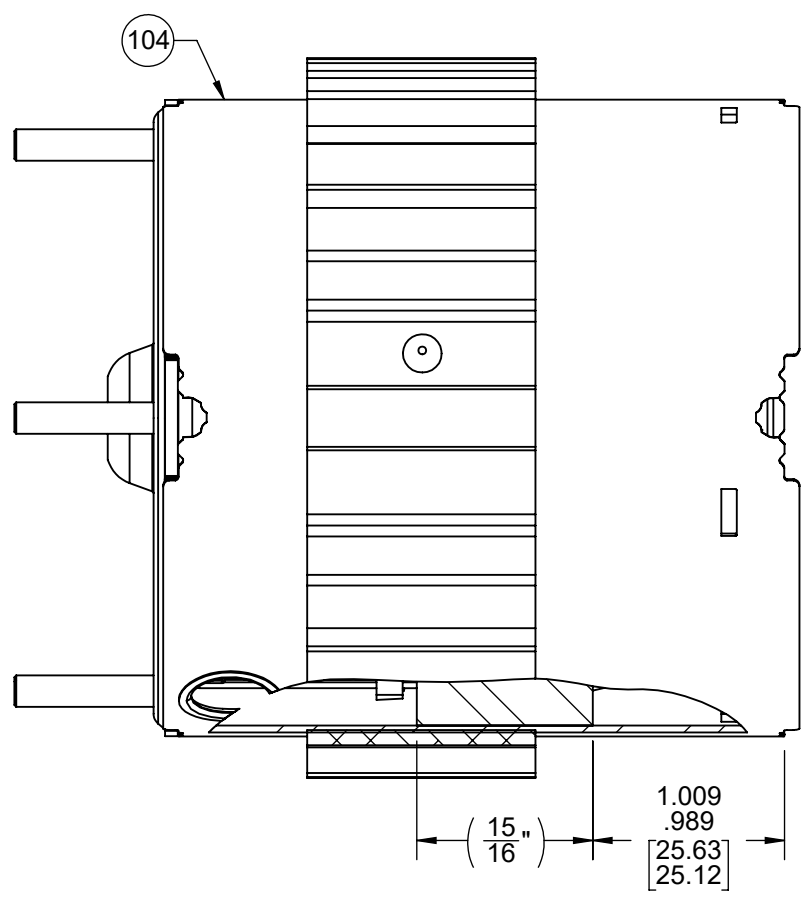
61299553

DRAWING REVISION AK	REVISION BY SDM	REV DATE/DATE 5/2/2022	TOLERANCES (EXCEPT AS NOTED): DEC. INCH mm ANGLE .X ±0.1 [±3] ±1° .XX ±0.01 [±0.3] .XXX ±0.005 [±0.13] .XXXX ±0.0005 [±0.013]	DRAWN BY SED		Regal Beloit America, Inc.
REQUEST NUMBER ECR-0217395	APPROVED BY KBB	DATE 5/2/2022	REMOVE BURRS & BREAK SHARP EDGES: .003/.015 [ .08/.38] X 45° CORNER FILLETS: R.02 [ .5] MACHINED SURFACES: .125/ mm 3.2 INCH mm ARE FOR REFERENCE ONLY	DATE 5/6/2015		
REQUEST NUMBER DESCRIPTION CHANGE N/P FASCO LOGO TO FASCO TM				APPROVED BY MLM	DESCRIPTION OUTLINE MOTOR ASSY	
COPYRIGHT (PER REVISION DATE) REGAL BELOIT AMERICA, INC. ALL RIGHTS RESERVED. PROPRIETARY AND CONFIDENTIAL INFORMATION - THIS DOCUMENT IS THE PROPERTY OF REGAL BELOIT AMERICA, INC. ('OWNER') AND CONTAINS OWNER'S PROPRIETARY INFORMATION. ANY PERSON, CORPORATION OR OTHER FIRM RECEIVING IT IS DEEMED, BY RECEIVING IT, TO AGREE THAT IT, AND/OR ANY PART OF IT, SHALL NOT BE DISCLOSED TO ANY PERSON, CORPORATION OR OTHER ENTITY, DUPLICATED, AND/OR USED, EXCEPT AS EXPRESSLY APPROVED IN WRITING IN ADVANCE BY OWNER. THIS DOCUMENT SHALL BE RETURNED TO OWNER UPON REQUEST. IT MAY BE SUBJECT TO CERTAIN RESTRICTIONS UNDER APPLICABLE EXPORT CONTROL LAWS AND REGULATIONS.				DATE 5/6/2015	MATERIAL	PROCESS/FINISH BLACK PAINT
THIRD ANGLE PROJECTION			SIZE C	DRAWING NUMBER 71621073	SHEET 1 OF 2	

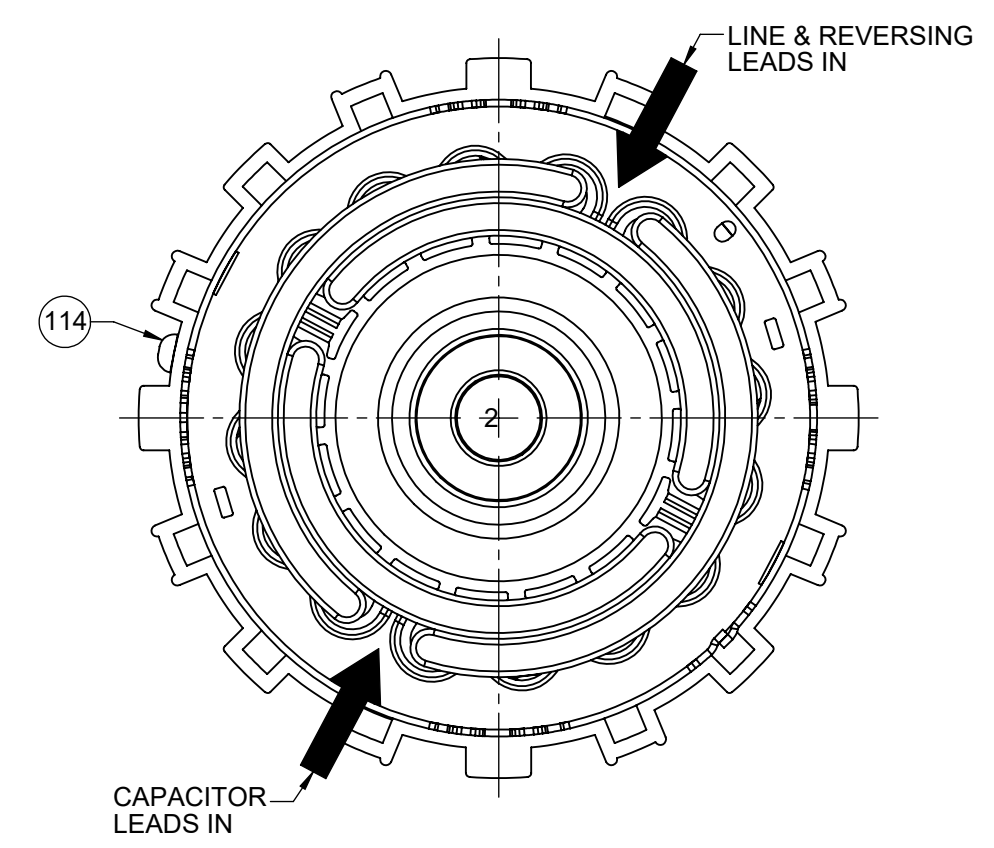
NOTES

1. MAXIMUM TORQUE REQUIRED TO TURN MOTOR SHAFT IS 3/8 IN - OUNCE.
2. ASSEMBLE SPRING BETWEEN WASHER AND BEARING ON CLIP END, WITH SPRING FINGERS TOWARD BEARING.
3. ASSEMBLE BALL BEARINGS TO BEARING RETAINERS PER 88834419.
4. BRING LINE LEADS DIRECTLY OUT LEAD EXIT. IGNORE POSITION OF OTHER LEADS, THEY WILL ROTATE BACK TO THEIR LEAD EXIT.
5. CUT CAPACITOR LEADS TO LENGTH, RESTRIP TO .25 ± .06 [6.4 ± 1.5] AND ASSEMBLE TERMINALS.
6. CUT BROWN AND RED LEADS TO LENGTH, RESTRIP TO .19 ± .06 [4.8 ± 1.5]. ATTACH PIN TERMINALS AND ASSEMBLE HOUSING AS SHOWN ON TOP DRAWING.
7. CUT WHITE AND YELLOW LEADS TO LENGTH, RESTRIP TO .25 ± .06 [6.4 ± 1.52]. ATTACH SOCKET TERMINALS AND ASSEMBLE HOUSING AS SHOWN ON TOP DRAWING.
8. ATTACHED TERMINALS MUST MEET SPECIFICATIONS PER 88834229.

FRONT END



BACK END



BLAST COOLED SPECIFICATIONS

1. FAN MUST TRACK WITHIN .035 [.89] AND HAVE .10 [2.5] MIN. CLEARANCE TO BEARING BOSS AFTER PRESS ON OPERATION.
2. ASSEMBLE COOLING CASE PER 88839269.
3. DIMENSION OVER ENDPLATES TO BE 3.43/3.39 [87.1/86.1].
4. DRILL PILOT HOLE WITH A #37 DRILL .300/.275 [7.62/6.99] DEEP AT CENTER OF DRILL AND PIN COOLING BAND SECURELY TO STATOR AND SLEEVE ASSEMBLY IN ONE PLACE.

SINGLE PACKING SPECIFICATIONS

1. PACK PER 88834200. 1 PER CONTAINER, 30 PER LAYER, 180 MAX. PER PALLET.
2. PLACE MOTOR IN CARTON SHAFT END UP. PLACE FILLER TUBE OVER SHAFT, STUFF PAPER AROUND MOTOR TO PREVENT MOVEMENT DURING SHIPMENT. CLOSE FLAPS AND TAPE. CARTON LABELS MUST ALL FACE ONE DIRECTION TOWARD THE OPEN END OF THE PALLET, SEE 88834408.
4. NO PACKAGING TAPE OVER CARTON LABEL.

DRAWING REVISION AK	REVISION BY SDM	REV DATE/© DATE 5/2/2022	TOLERANCES (EXCEPT AS NOTED):				DRAWN BY SED	Regal Rexnord Regal Beloit America, Inc.		
REQUEST NUMBER ECR-0217395	APPROVED BY KBB	DATE 5/2/2022	DEC.	INCH	mm	ANGLE	DATE 5/6/2015	DESCRIPTION <b>OUTLINE MOTOR ASSY</b>		
REQUEST NUMBER DESCRIPTION CHANGE N/P FASCO LOGO TO FASCO TM			.X	±0.1	[±3]	±1°	APPROVED BY MLM			
<small>COPYRIGHT (PER REVISION DATE) REGAL BELOIT AMERICA, INC. ALL RIGHTS RESERVED. PROPRIETARY AND CONFIDENTIAL INFORMATION - THIS DOCUMENT IS THE PROPERTY OF REGAL BELOIT AMERICA, INC. ("OWNER") AND CONTAINS OWNER'S PROPRIETARY INFORMATION. ANY PERSON, CORPORATION OR OTHER FIRM RECEIVING IT IS DEEMED, BY RECEIVING IT, TO AGREE THAT IT, AND/OR ANY PART OF IT, SHALL NOT BE DISCLOSED TO ANY PERSON, CORPORATION OR OTHER ENTITY, DUPLICATED, AND/OR USED, EXCEPT AS EXPRESSLY APPROVED IN WRITING IN ADVANCE BY OWNER. THIS DOCUMENT SHALL BE RETURNED TO OWNER UPON REQUEST. IT MAY BE SUBJECT TO CERTAIN RESTRICTIONS UNDER APPLICABLE EXPORT CONTROL LAWS AND REGULATIONS.</small>			.XX	±0.01	[±0.3]		DATE 5/6/2015	MATERIAL	PROCESS/FINISH BLACK PAINT	
			.XXX	±0.005	[±0.13]		REFERENCE	SIZE C	DRAWING NUMBER 71621073	SHEET 2 OF 2
			.XXXX	±0.0005	[±0.013]		THIRD ANGLE PROJECTION			
			REMOVE BURRS & BREAK SHARP EDGES: .003/.015 [.08/.38] X 45° CORNER FILLETS: R.02 [.5] MACHINED SURFACES: .125/ mm 3.2 INCH/mm mm DIMENSIONS IN [BRACKETS] ARE FOR REFERENCE ONLY							