

# PRODUCT INFORMATION PACKET

FASCO®

Model No: D154

Catalog No: D154

Fan and Blower Motor, 1/10 HP, 1 Ph, 60 Hz, 115 V, 1050 RPM, 1 Speed, 42 Frame, OAO



Regal and Fasco are trademarks of Regal Rexnord Corporation or one of its affiliated companies.

©2022 Regal Rexnord Corporation, All Rights Reserved. MC017097E

RegalRexnord



**Nameplate Specifications**

Output HP	1/10 Hp	Output KW	0.07 kW
Frequency	60 Hz	Voltage	115 V
Current	5.0 A	Speed	1050 rpm
Service Factor	1	Phase	1
Duty	Air Over	Insulation Class	A
Frame	42	Enclosure	Open Air Over
Thermal Protection	Thermally Protected	Ambient Temperature	40 °C
UL	Recognized	CSA	Y
CE	N	Number of Speeds	1

**Technical Specifications**

Electrical Type	Shaded Pole	Starting Method	Across The Line
Poles	6	Rotation	Clockwise Shaft End
Mounting	Resilient Rings	Drive End Bearing	Sleeve
Opp Drive End Bearing	Sleeve	Frame Material	Na
Shaft Type	Flat	Overall Length	8.23 in
Shaft Diameter	0.375 in	Shaft Extension	2.84 in
Connection Drawing	NA	Outline Drawing	7151294919_S001

This is an uncontrolled document once printed or downloaded and is subject to change without notice. Date Created:11/29/2022

NOTES

1. THRU AIR SPACING BETWEEN WIRE AND METAL .10 MIN.
2. TIE BOLT TORQUE TOLERANCE 7 - 12 IN. LBS.
3. FOR WASHER SET-UP, SEE CHART C600 0279, DETAIL "P".
4. ROTOR FREENESS TO BE WITHIN 3/4 OZ. IN.
5. SALES TO SPECIFY ON P.O. WHICH PACK TO USE.

ECO	REV.	DATE	SPEC/CHECK
637241	16	5-8-07	MKR/MKR
639412	17	04-08-09	GAE/GAE
C438423	18	3-8-10	SED/BGP
0054288	19	7/22/2014	KSA/SDM

- 71xx xxxx,M
- A. SEE PACKAGING MANUAL PAGE 2 FOR PACKAGING PROCEDURE.
- 1 MOTOR/CARTON;  
32 MOTORS/LAYER;  
6 LAYERS/PALLET;  
192 MOTORS/PALLET.
- B. SEE DRAWING 87856079 SH. 1 FOR PALLET LAYOUT.
- C. CENTER LABEL, 61229251, ON END OF CARTON.
- D. PLACE PAMPHLET, 61224579, IN CARTON WITH MOTOR.
- E. CARTON LABELS MUST ALL FACE ONE DIRECTION TOWARD THE OPEN END OF THE PALLET. SEE P.S. 88834408.
- F. NO PACKAGING TAPE OVER CARTON LABEL.

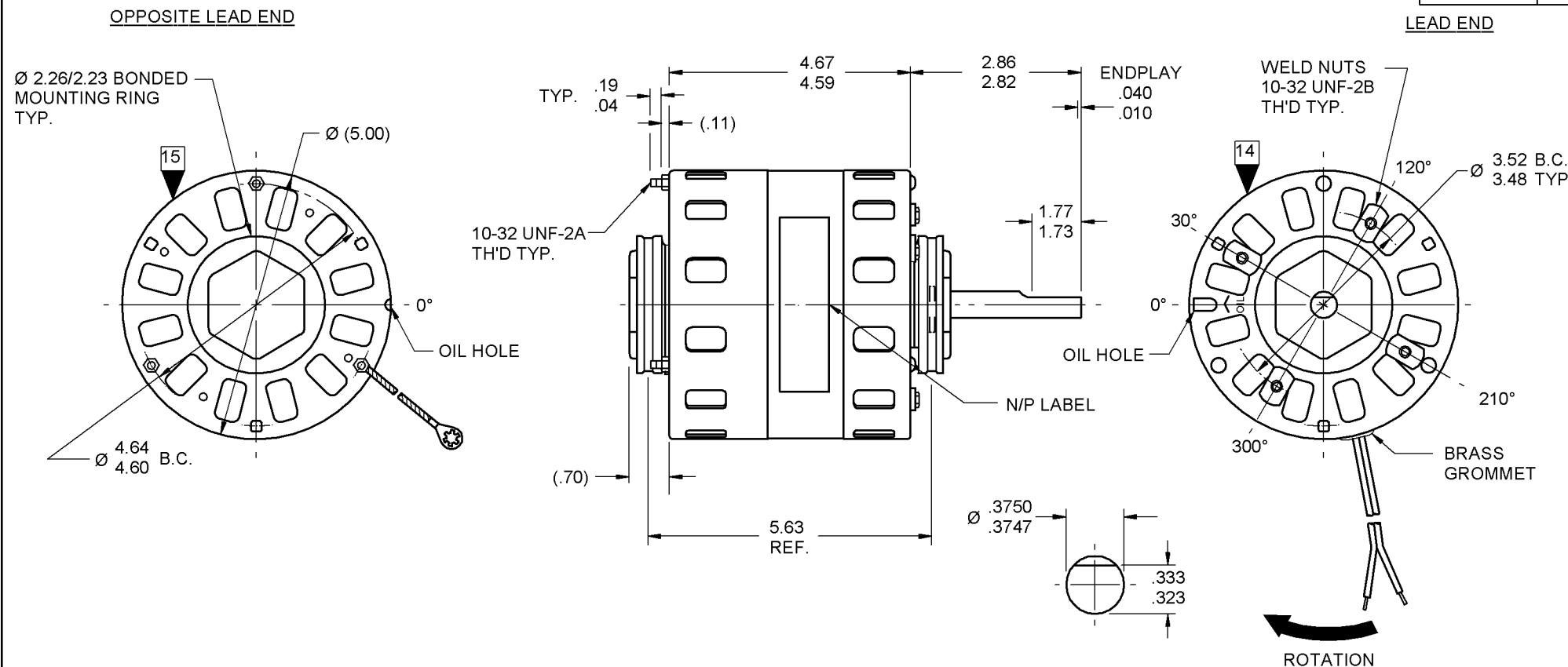
71xx xxxxC

If Printed, this is an Uncontrolled Document

PRODUCTION TEST AT IDLE 115 VOLTS 60 HZ		MOTOR VOLTAGE	PERFORMANCE TEST 115 VOLTS 60 HZ 1 PH 1/10 HP										
AMP	WATT		IDLE			LOADED				LOCKED			BREAK
			RPM	AMP	WATT	OZ/IN	RPM	AMP	WATT	OZ/IN	AMP	WATT	OZ/IN
4.62 — 3.78	238.7 — 195.3	HIGH	1181	4.2	217	144	1050	4.8	327	54	6.6	405	164

HI-POT TEST 2000 VOLTS  
MAX LEAKAGE CURRENT 5 mA

7151 2949 MA



LEAD DATA: 18 GA. 3/64 INSUL. 105°C. 2-COND. SPT-2 PARALLEL BLK LEAD MATERIAL 26.00/24.00 IN. LONG WITH A 1.75/1.25 IN. SPLIT LENGTH AND .56/.44 IN. STRIP.

GROUND LEAD DATA: 18 GA. 2/64 INSUL. 105° C THERMO. GRN/YEL 7.00/6.00 IN. LONG WITH A #10 SERRATED RING TERMINAL.

SPECIAL INSTRUCTIONS: SHAFT IS BONDERIZED. ROTOR IS RUSTPROOFED. PAMPHLET PACKED WITH MOTOR.

MOTORS PACKED MAX. PER SKID: <u>    </u> PALLET PACK, 192 CARTON PACK.											
CUSTOMER: FASCO DISTRIBUTING CO.						PROPRIETARY: DO NOT DUPLICATE OR DISCLOSE TO THIRD PARTIES WITHOUT WRITTEN PERMISSION OF FASCO IND. INC., ELDON MO.					
PART NUMBER: D154						FASCO INDUSTRIES, INC. MOTOR DIVISION ELDON PLANT					
APPLICATION: DIST. SALES				MOTOR TYPE SHADED POLE				MOTOR NUMBER 7151 2949		REV. 19	
FINISH COLOR: GRAY				MOTOR WEIGHT: LBS.							
ENVIRONMENT: WET				INSULATION CLASS: A							
B	LA	FR	A	S	C	E	B	A			
00	51	11	F	05	0A	5	6	0			

00464072 00464282

**FASCO** Motor Division

Assembled in Mexico  
No. 71512949 TYPE U51 AO PH 1  
115 V 60 Hz  
5.0 A 1050 RPM 1/10 HP  
Model D154  
Thermally Protected

**SAFETY WARNING**  
This Motor Must Be Grounded in Accordance With Local Or National Electrical Codes To Prevent Possible Injury Due To Electrical Shock

LOCATE Ø OF NAMEPLATE ON Ø OF STATOR TO READ RIGHT FROM LEAD END OF MOTOR CENTER AT 0°.