

# PRODUCT INFORMATION PACKET

FASCO®

Model No: D122

Catalog No: D122

Fan and Blower Motor, 1/80 HP, 1 Ph, 60 Hz, 115 V, 1500 RPM, 1 Speed, 3.3" Diameter, TEAO



Regal and Fasco are trademarks of Regal Rexnord Corporation or one of its affiliated companies.

©2022 Regal Rexnord Corporation, All Rights Reserved. MC017097E

RegalRexnord



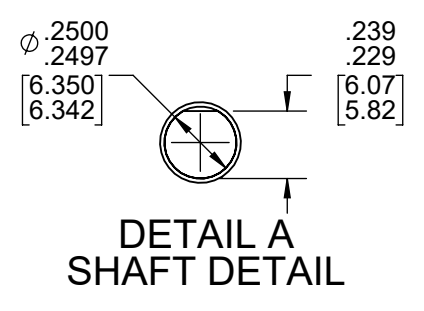
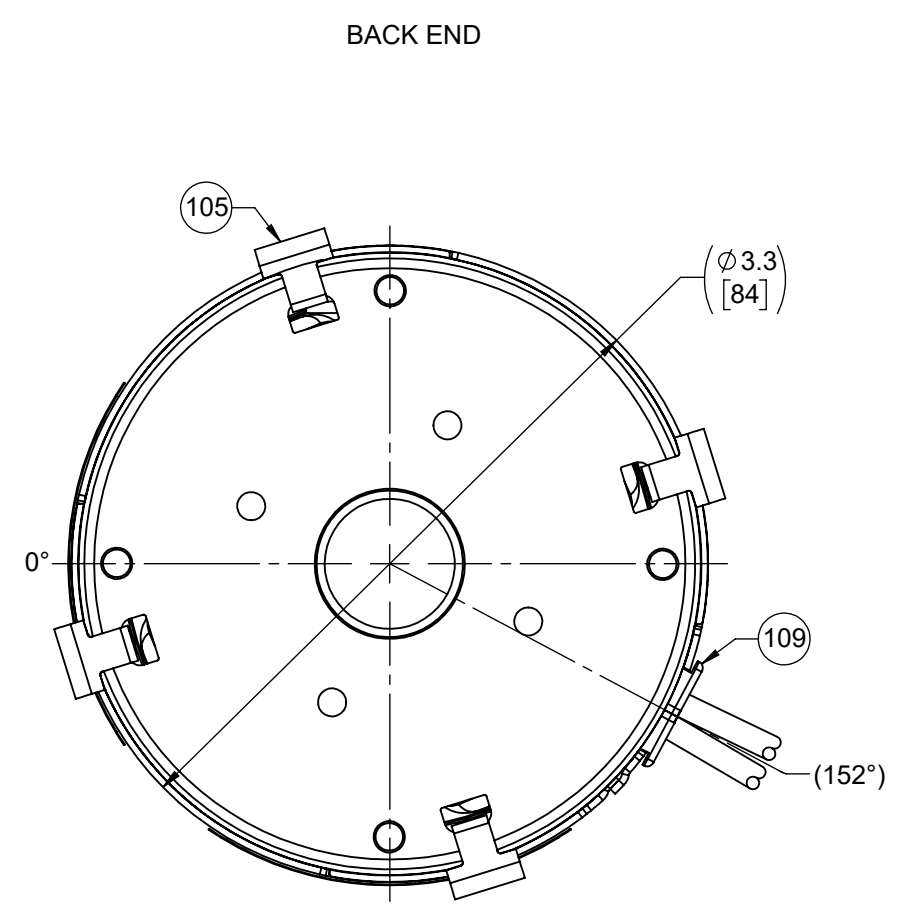
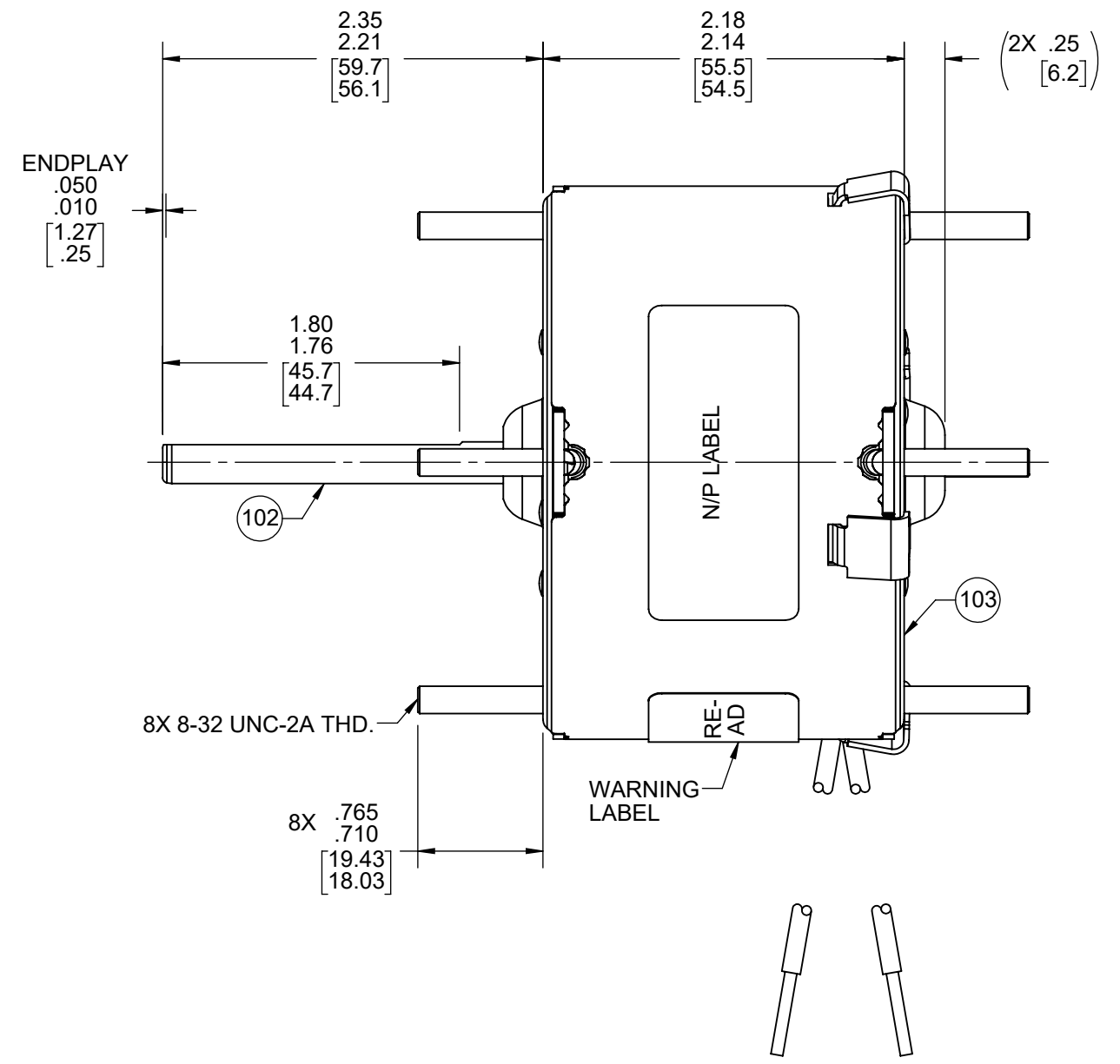
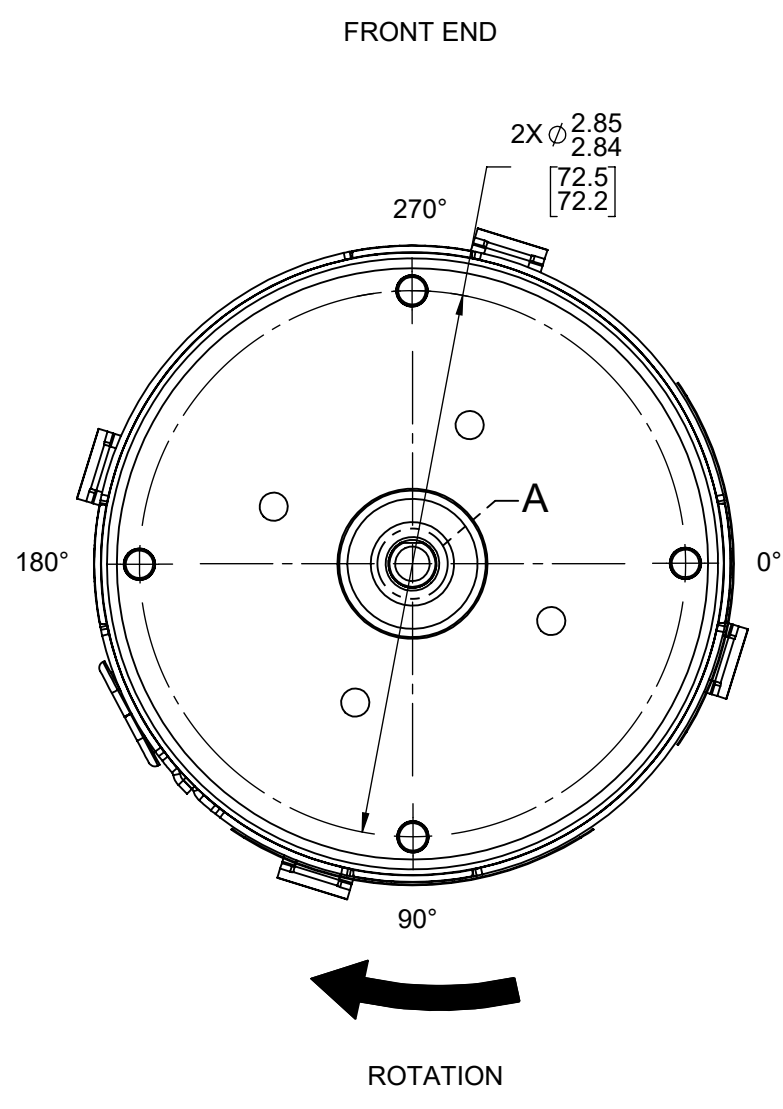
**Nameplate Specifications**

Output HP	1/80 Hp	Output KW	0.01 kW
Frequency	60 Hz	Voltage	115 V
Current	0.60 A	Speed	1500 rpm
Service Factor	1	Phase	1
Duty	Air Over	Insulation Class	B
Frame	3.3	Enclosure	Totally Enclosed Air Over
Thermal Protection	Thermally Protected	Ambient Temperature	40 °C
UL	Recognized	CSA	Y
CE	N	Number of Speeds	1

**Technical Specifications**

Electrical Type	Shaded Pole	Starting Method	Across The Line
Poles	4	Rotation	Clockwise Shaft End
Mounting	Extended Studs	Drive End Bearing	Sleeve
Opp Drive End Bearing	Sleeve	Frame Material	Steel
Shaft Type	Flat	Overall Length	4.78 in
Frame Length	1.95 in	Shaft Diameter	0.250 in
Shaft Extension	2.30 in		
Outline Drawing	71631482	Connection Drawing	NA

This is an uncontrolled document once printed or downloaded and is subject to change without notice. Date Created:11/29/2022



LEAD MATERIAL  
18 GA. 125°C, 2/64 INSUL.  
X-LINKED POLY. (2) BLACK  
14.00/12.00 [355.6/304.8]  
.56/.44 [14.2/11.2] STRIP

NOTES:  
1. NO PACKING TAPE OVER CARTON LABEL.

CUSTOMER:	FASCO DIST.	APPLICATION:	COUNTER SALES								
CUSTOMER PN:	D122	MOTOR WEIGHT:	2.06 LBS.								
		ENVIRONMENT:	DRY								
HORIZONTAL	MOTOR TYPE				REFERENCE SAMPLE						
	SHADED POLE										
	B	LA	FR	A	S	C	E	B	A		
	00	63	30	T	01	HD	5	1	0		
TYPICAL PERFORMANCE AT 115 VOLTS 60 HZ											
MOTOR SPEED	IDLE			LOADED			LOCKED			BREAK	
	RPM	AMP	WATT	IN OZ	RPM	AMP	WATT	IN OZ	AMP	WATT	IN OZ
	1710	.53	33	10.0	1580	.59	46	3.7	.78	63	9.7

61305568

**SAFETY WARNING**  
This motor must be grounded in accordance with local or national electrical codes to prevent possible injury due to electrical shock

**AVERTISSEMENT DE SÉCURITÉ**  
Ce moteur doit être fondée sur fondée sur conformément à la réglementation locale ou national électrique codes pour prévenir d'éventuelles blessures en raison de choc électrique

00464071

**FASCO™**

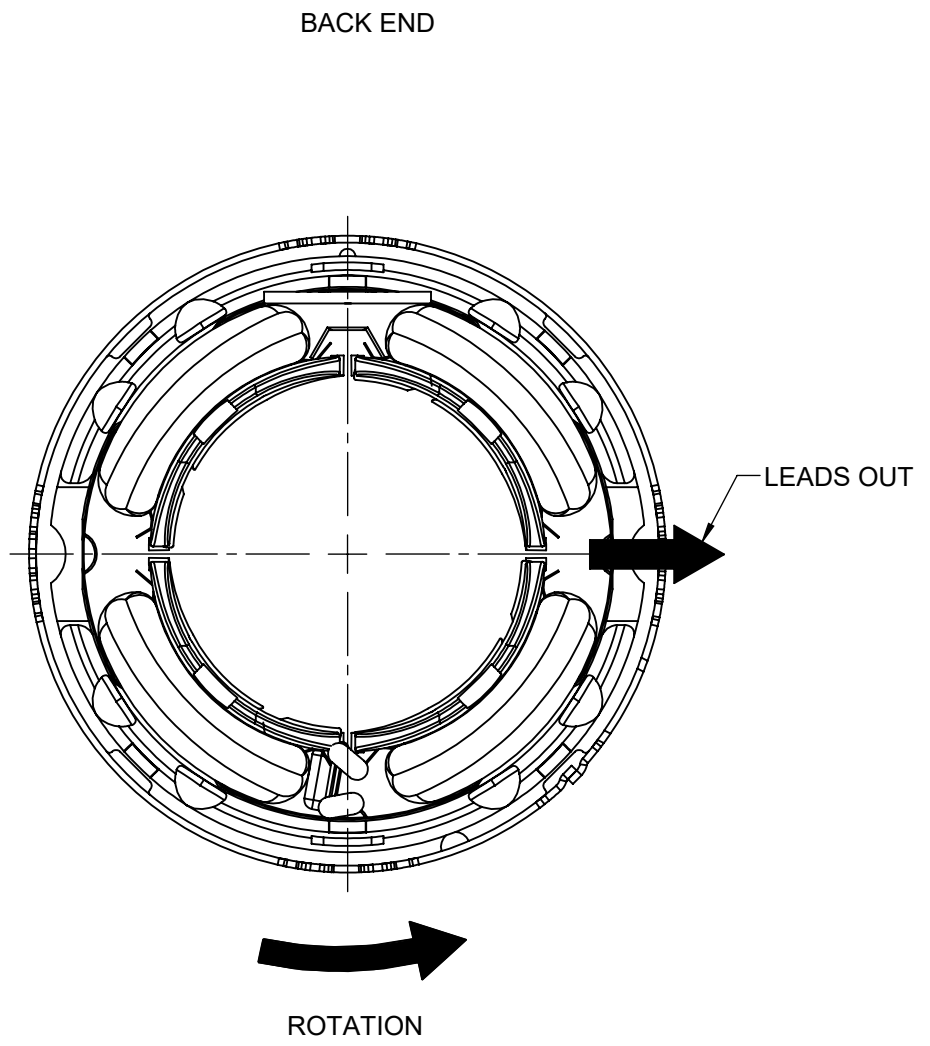
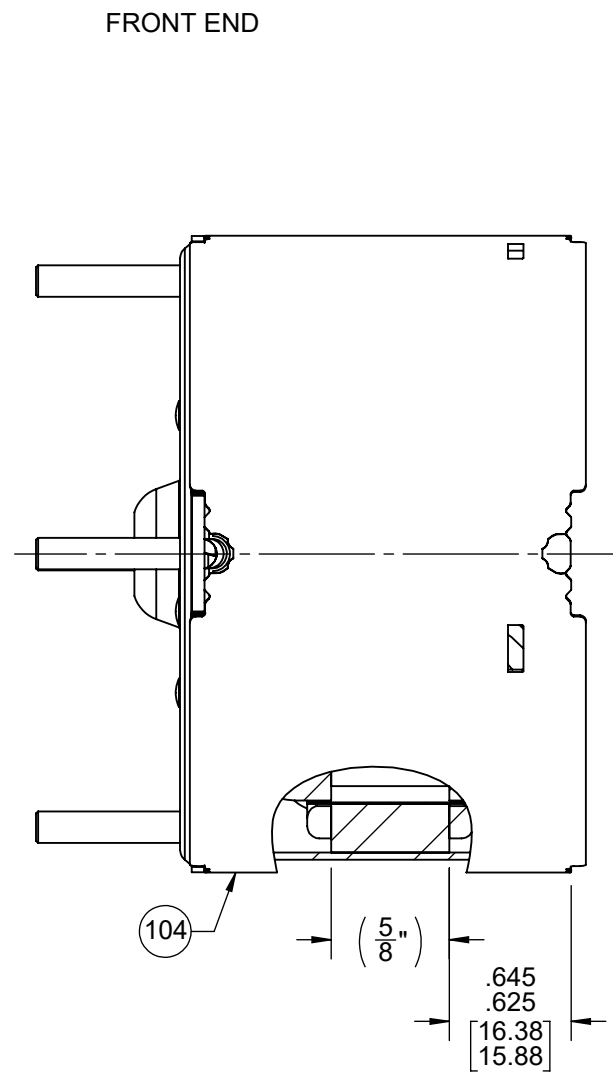
Assembled In Mexico

No. 71631482 TYPE U63B1 T.P. TEAO LR6319  
115 V 60 Hz Class B  
0.6 A 1500 RPM 1/80 HP  
Model D122 Max Amb:40°C

61299553

DRAWING REVISION AC	REVISION BY MH	REV DATE/© DATE 7/22/2022	TOLERANCES (EXCEPT AS NOTED): DEC. INCH mm ANGLE	DRAWN BY SDM		Regal Rexnord Regal Beloit America, Inc.
REQUEST NUMBER ECR-0219616	APPROVED BY SDM	DATE 7/22/2022	.X ±0.1 [±3] ±1° .XX ±0.01 [±0.3] .XXX ±0.005 [±0.13] .XXXX ±0.0005 [±0.013]	DATE 1/31/2018		
REQUEST NUMBER DESCRIPTION CHANGED FASCO LOGO			REMOVE BURRS & BREAK SHARP EDGES: .003/.015 [.08/.38] X 45° CORNER FILLETS: R.02 [5] MACHINED SURFACES: .125/ mm 3.2 INCH mm	APPROVED BY SED	DESCRIPTION OUTLINE MOTOR ASSY	PROCESS/FINISH BLACK
COPYRIGHT (PER REVISION DATE) REGAL BELOIT AMERICA, INC. ALL RIGHTS RESERVED. PROPRIETARY AND CONFIDENTIAL INFORMATION - THIS DOCUMENT IS THE PROPERTY OF REGAL BELOIT AMERICA, INC. ('OWNER') AND CONTAINS OWNER'S PROPRIETARY INFORMATION. ANY PERSON, CORPORATION OR OTHER FIRM RECEIVING IT IS DEEMED, BY RECEIVING IT, TO AGREE THAT IT, AND/OR ANY PART OF IT, SHALL NOT BE DISCLOSED TO ANY PERSON, CORPORATION OR OTHER ENTITY, DUPLICATED, AND/OR USED, EXCEPT AS EXPRESSLY APPROVED IN WRITING IN ADVANCE BY OWNER. THIS DOCUMENT SHALL BE RETURNED TO OWNER UPON REQUEST. IT MAY BE SUBJECT TO CERTAIN RESTRICTIONS UNDER APPLICABLE EXPORT CONTROL LAWS AND REGULATIONS.			mm DIMENSIONS IN [BRACKETS] ARE FOR REFERENCE ONLY	DATE 1/31/2018	MATERIAL	
				THIRD ANGLE PROJECTION	SIZE C	SHEET 1 OF 2

- NOTES:
1. STAKE STATOR TO MAIN FRAME PER 88830264.
  2. MAXIMUM TORQUE TO TURN MOTOR IS 1/4 INCH-OUNCE.
  3. MAKE-UP WASHERS ARE TO BE ADDED OR DELETED TO ACHIEVE REQUIRED ENDPLAY.



**PACKING SPECIFICATIONS**

1. PACK 1 PER CONTAINER, 45 CONTAINERS PER LAYER, 6 LAYERS PER PALLET, 270 MAX. PER PALLET, PER 88834200.
2. PLACE FOAM RING ON CLINCH STUDS ON CLIP END OF MOTOR AND FILLER TUBE OVER SHAFT EXTENSION. PLACE MOTOR IN CONTAINER WITH SHAFT UP. CLOSE FLAPS AND TAPE. CARTON LABELS MUST ALL FACE ONE DIRECTION TOWARD THE OPEN END OF THE PALLET. PER 88834408.
3. PLACE (1) FLAT PAD BETWEEN EACH LAYER AND (1) ON TOP.
4. PLACE ALL INSPECTION STICKERS AND WRITING ON TOP FLAT PAD.

DRAWING REVISION AC	REVISION BY MH	REV DATE/© DATE 7/22/2022	TOLERANCES (EXCEPT AS NOTED): DEC. INCH mm ANGLE	DRAWN BY SDM	Regal Beloit America, Inc.
REQUEST NUMBER ECR-0219616	APPROVED BY SDM	DATE 7/22/2022	.X ±0.1 [±3] ±1° .XX ±0.01 [±3] .XXX ±0.005 [±0.13] .XXXX ±0.0005 [±0.013]	DATE 1/31/2018	
REQUEST NUMBER DESCRIPTION CHANGED FASCO LOGO			REMOVE BURRS & BREAK SHARP EDGES: .003/.015 [.08/.38] X 45° CORNER FILLETS: R.02 [.5]	APPROVED BY SED	DESCRIPTION OUTLINE MOTOR ASSY
COPYRIGHT (PER REVISION DATE) REGAL BELOIT AMERICA, INC. ALL RIGHTS RESERVED. PROPRIETARY AND CONFIDENTIAL INFORMATION - THIS DOCUMENT IS THE PROPERTY OF REGAL BELOIT AMERICA, INC. ("OWNER") AND CONTAINS OWNER'S PROPRIETARY INFORMATION. ANY PERSON, CORPORATION OR OTHER FIRM RECEIVING IT IS DEEMED, BY RECEIVING IT, TO AGREE THAT IT, AND/OR ANY PART OF IT, SHALL NOT BE DISCLOSED TO ANY PERSON, CORPORATION OR OTHER ENTITY, DUPLICATED, AND/OR USED, EXCEPT AS EXPRESSLY APPROVED IN WRITING IN ADVANCE BY OWNER. THIS DOCUMENT SHALL BE RETURNED TO OWNER UPON REQUEST. IT MAY BE SUBJECT TO CERTAIN RESTRICTIONS UNDER APPLICABLE EXPORT CONTROL LAWS AND REGULATIONS.			MACHINED SURFACES: .125/ mm 3.2/ INCH mm	DATE 1/31/2018	MATERIAL
			mm DIMENSIONS IN [BRACKETS] ARE FOR REFERENCE ONLY	REFERENCE	PROCESS/FINISH BLACK
			THIRD ANGLE PROJECTION	SIZE C	DRAWING NUMBER 71631482
					SHEET 2 OF 2