

PRODUCT INFORMATION PACKET

FASCO®

Model No: D105

Catalog No: D105

Fan and Blower Motor, 1/40 HP, 1 Ph, 60 Hz, 115 V, 1550 RPM, 1 Speed, 3.3" Diameter, OAO



Regal and Fasco are trademarks of Regal Rexnord Corporation or one of its affiliated companies.

©2022 Regal Rexnord Corporation, All Rights Reserved. MC017097E

RegalRexnord



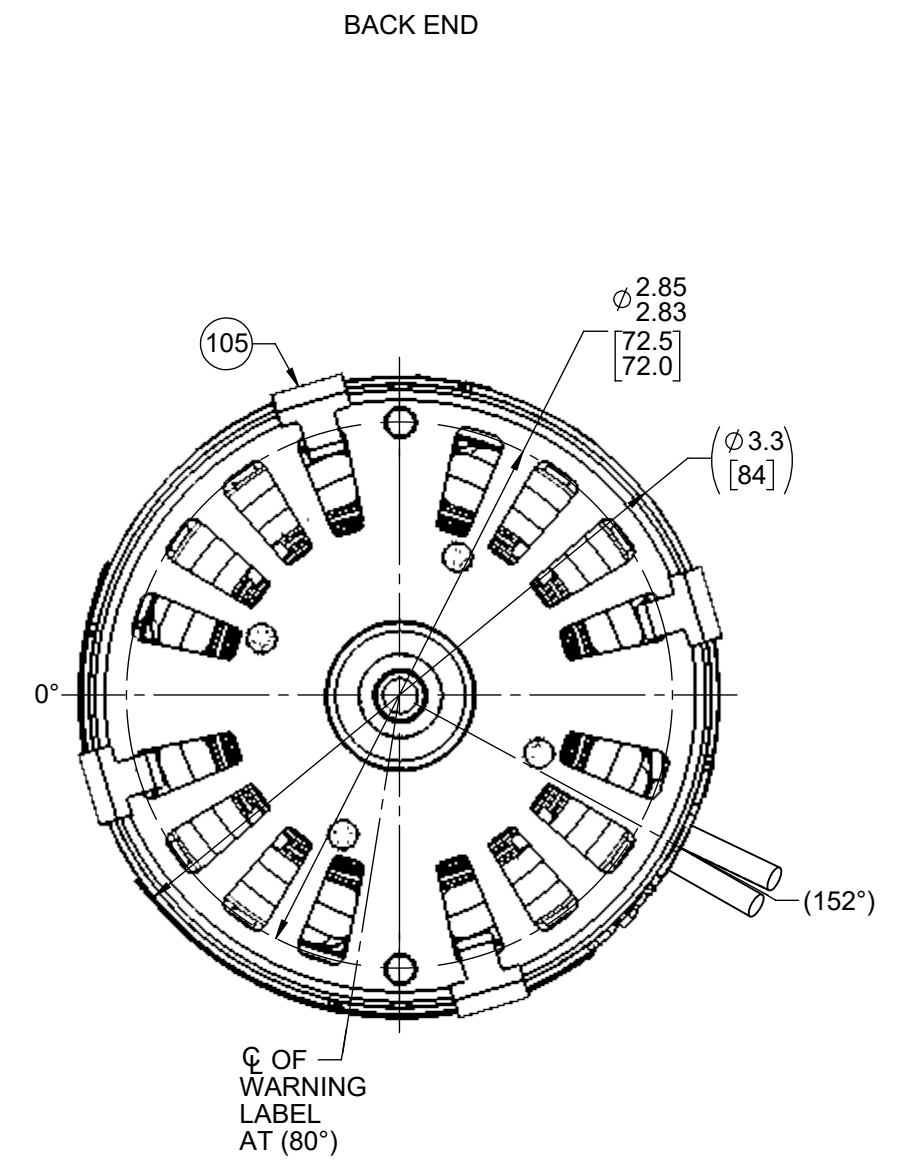
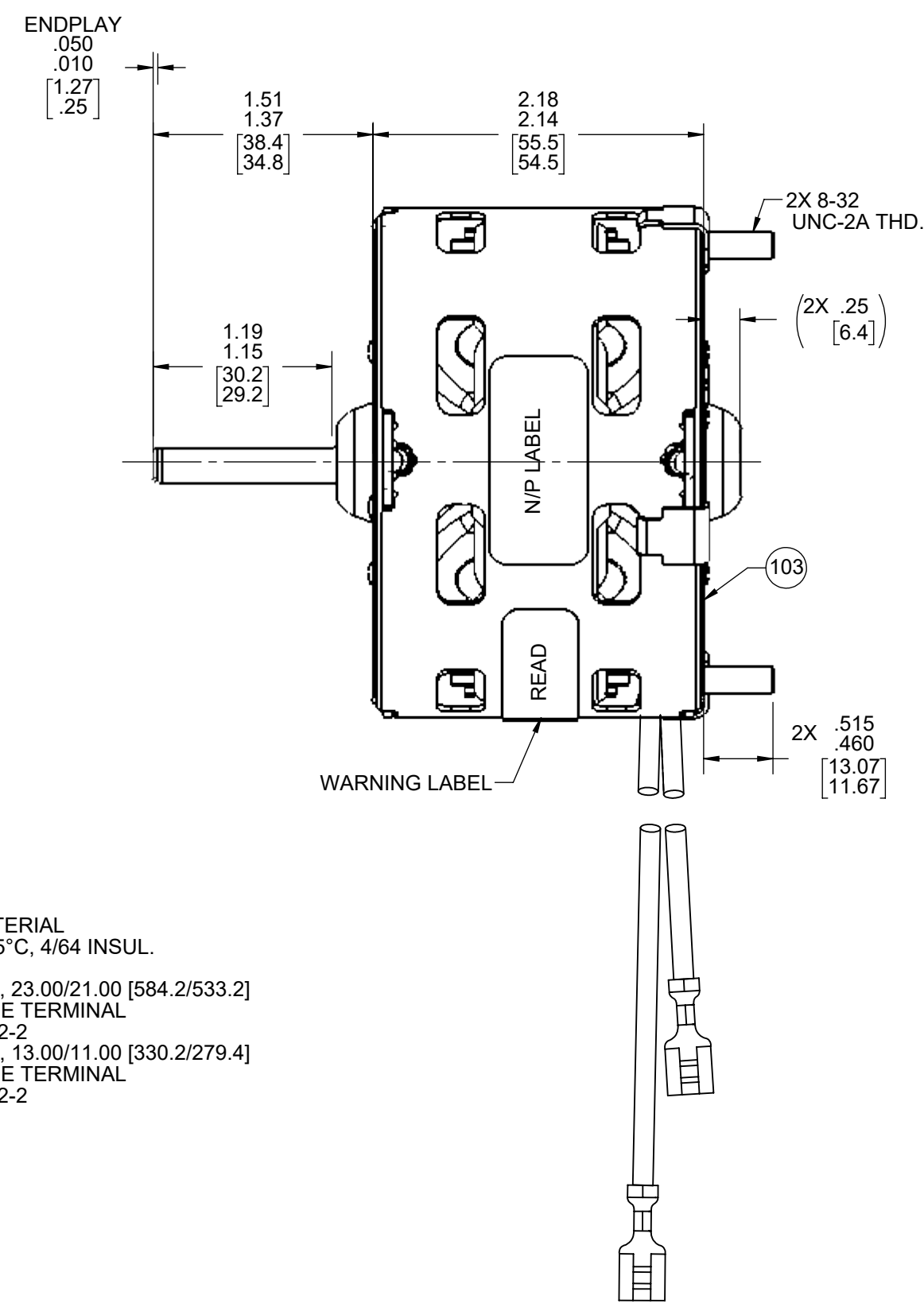
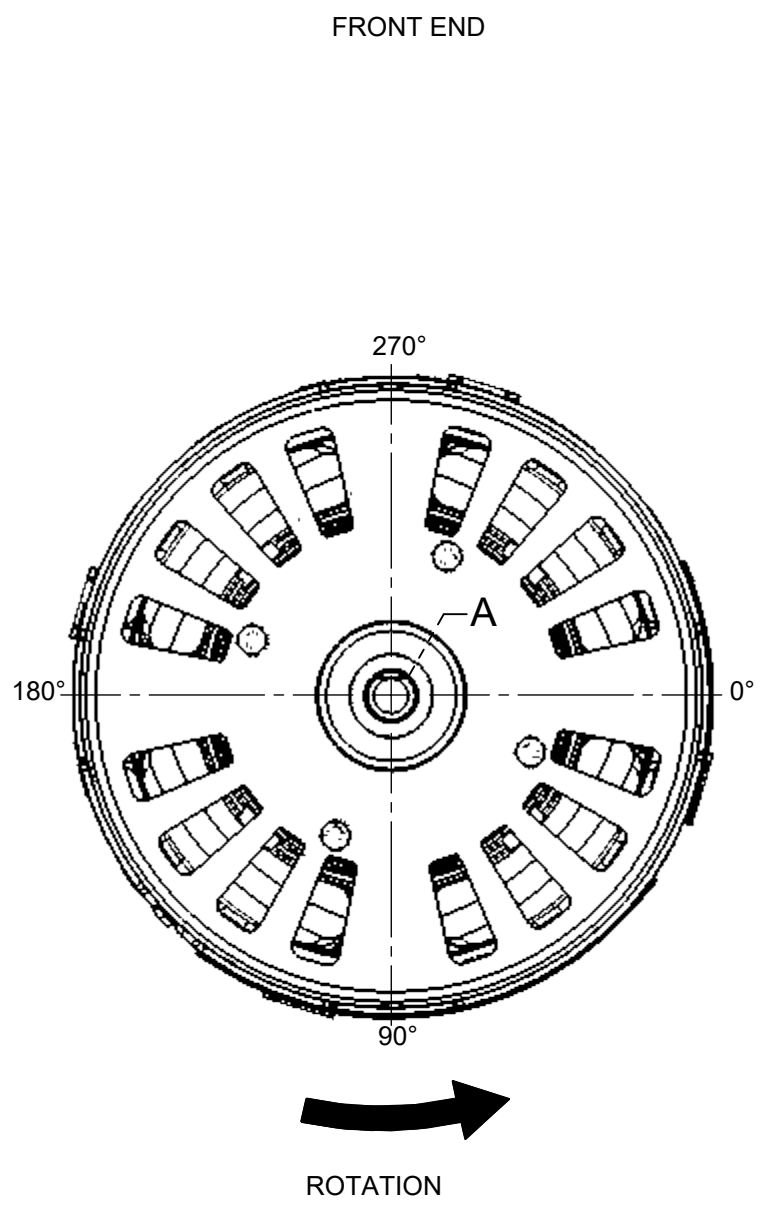
Nameplate Specifications

Output HP	1/40 Hp	Output KW	0.02 kW
Frequency	60 Hz	Voltage	115 V
Current	1.00 A	Speed	1550 rpm
Service Factor	1	Phase	1
Duty	Air Over	Insulation Class	B
Frame	3.3	Enclosure	Open Air Over
Thermal Protection	Thermally Protected	Ambient Temperature	40 °C
UL	No	CSA	N
CE	N	Number of Speeds	1

Technical Specifications

Electrical Type	Shaded Pole	Starting Method	Across The Line
Poles	4	Rotation	Counterclockwise Shaft End
Mounting	Extended Studs	Drive End Bearing	Sleeve
Opp Drive End Bearing	Sleeve	Frame Material	Steel
Shaft Type	Flat	Overall Length	3.69 in
Frame Length	1.95 in	Shaft Diameter	0.250 in
Shaft Extension	1.50 in		
Outline Drawing	71730292	Connection Drawing	NA

This is an uncontrolled document once printed or downloaded and is subject to change without notice. Date Created:11/29/2022



LEAD MATERIAL
18 GA. 105°C, 4/64 INSUL.
EPDM
(1) BLACK, 23.00/21.00 [584.2/533.2]
W/FSPADE TERMINAL
AMP 42692-2
(1) BLACK, 13.00/11.00 [330.2/279.4]
W/FSPADE TERMINAL
AMP 42692-2

- NOTES:
- 270 MAX. MOTORS PER PALLET.
 - NO LEAD GROMMET REQUIRED.
 - MOTOR HAS 416 STAINLESS STEEL SHAFT.
 - NO PACKING TAPE OVER CARTON LABEL.

61305815

SAFETY WARNING
This motor must be grounded in accordance with local or national electrical codes to prevent possible injury due to electrical shock

AVERTISSEMENT DE SECURITE
Ce moteur doit être fondée sur conformément à la réglementation locale ou national électrique codes pour prévenir d'éventuelles blessures en raison de choc électrique

00464296

FASCO™ Class B
Assembled in Mexico

No. 71730292 TYPE U73B1 AO

115 V 60 Hz 1.0 A 1/40 HP

1550 RPM Thermally Protected

Model D105

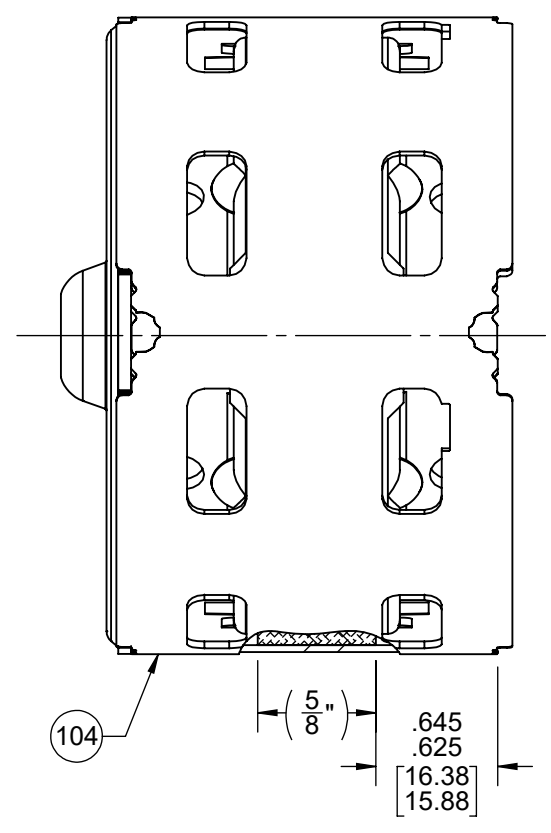
61299953

CUSTOMER:	FDC	APPLICATION:									
CUSTOMER PN:	D105	MOTOR WEIGHT:	2.00 POUNDS								
		ENVIRONMENT:	DRY								
MOTOR TYPE SHADED POLE											
	B	LA	FR								
	00	73	30								
		A	S								
		V	01								
		C	E								
		B	A								
		1	0								
TYPICAL PERFORMANCE AT 115 VOLTS 60 HZ											
MOTOR SPEED	IDLE			LOADED			LOCKED			BREAK	
	RPM	AMP	WATT	IN OZ	RPM	AMP	WATT	IN OZ	AMP	WATT	IN OZ
	1747	.88	54	15.9	1550	.94	74	7.0	1.26	104	19.2

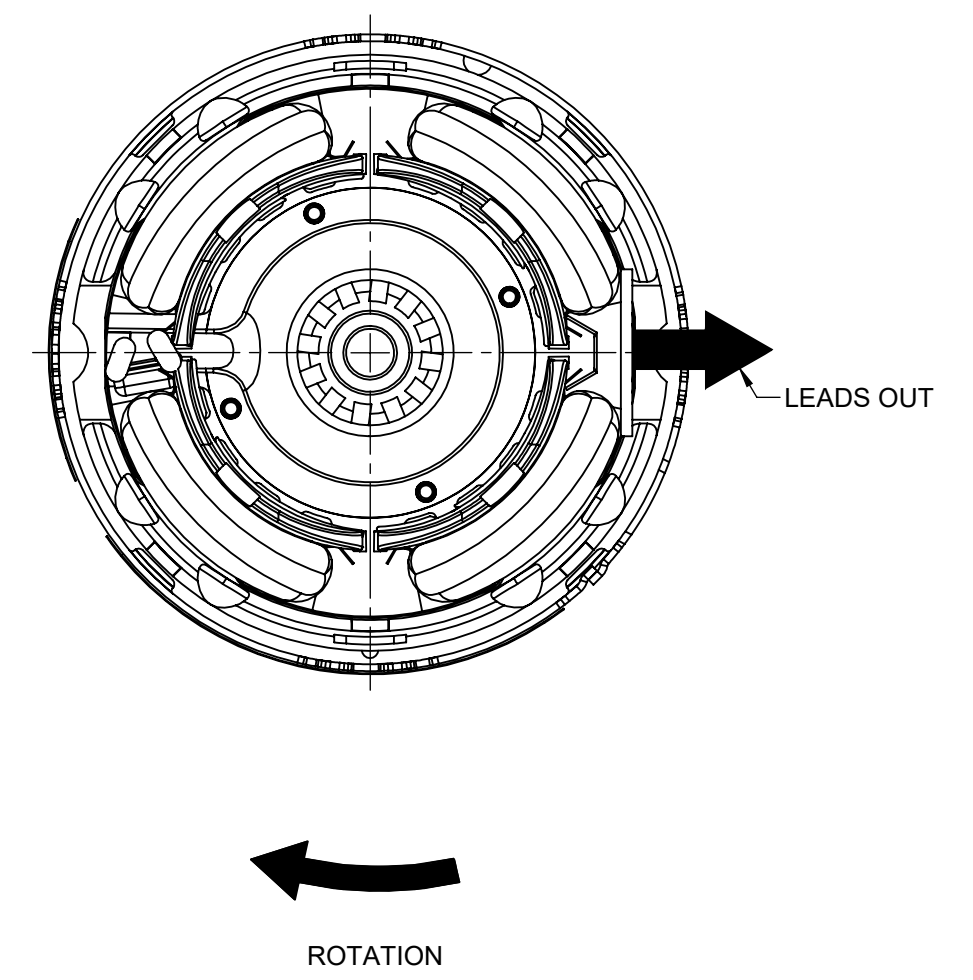
DRAWING REVISION AC	REVISION BY MH	REV DATE/© DATE 6/6/2022	TOLERANCES (EXCEPT AS NOTED): DEC. INCH mm ANGLE .X ±0.1 [±3] ±1° .XX ±0.01 [±0.3] .XXX ±0.005 [±0.13] .XXXX ±0.0005 [±0.013]	DRAWN BY FDP	Regal Rexnord Regal Beloit America, Inc.
REQUEST NUMBER ECR-0218425	APPROVED BY PLA	DATE 6/6/2022	REMOVE BURRS & BREAK SHARP EDGES: .003/.015 [.08/.38] X 45° CORNER FILLETS: R.02 [.5] MACHINED SURFACES: .125/ mm 3.2 INCH mm	DATE 8/23/2017	
REQUEST NUMBER DESCRIPTION UPDATE FASCO LOGO			mm DIMENSIONS IN [BRACKETS] ARE FOR REFERENCE ONLY	APPROVED BY PLA	DESCRIPTION OUTLINE MOTOR ASSY
COPYRIGHT (PER REVISION DATE) REGAL BELOIT AMERICA, INC. ALL RIGHTS RESERVED. PROPRIETARY AND CONFIDENTIAL INFORMATION - THIS DOCUMENT IS THE PROPERTY OF REGAL BELOIT AMERICA, INC. ("OWNER") AND CONTAINS OWNER'S PROPRIETARY INFORMATION. ANY PERSON, CORPORATION OR OTHER FIRM RECEIVING IT IS DEEMED, BY RECEIVING IT, TO AGREE THAT IT, AND/OR ANY PART OF IT, SHALL NOT BE DISCLOSED TO ANY PERSON, CORPORATION OR OTHER ENTITY, DUPLICATED, AND/OR USED, EXCEPT AS EXPRESSLY APPROVED IN WRITING IN ADVANCE BY OWNER. THIS DOCUMENT SHALL BE RETURNED TO OWNER UPON REQUEST. IT MAY BE SUBJECT TO CERTAIN RESTRICTIONS UNDER APPLICABLE EXPORT CONTROL LAWS AND REGULATIONS.				DATE 8/23/2017	MATERIAL
				REFERENCE	PROCESS/FINISH BLACK
				THIRD ANGLE PROJECTION	SIZE C DRAWING NUMBER 71730292
					SHEET 1 OF 2

- NOTES:
1. STAKE STATOR TO MAIN FRAME PER 88830264.
 2. MAXIMUM TORQUE REQUIRED TO TURN MOTOR SHAFT IS 3/8 INCH-OUNCE.
 3. MAKE-UP WASHERS ARE TO BE ADDED OR DELETED TO ACHIEVE REQUIRED ENDPLAY.

FRONT END



BACK END



PACKING SPECIFICATIONS

1. PACK PER 88834200. 1 PER CARTON, 45 PER LAYER, 270 MAX, PER PALLET.
2. PLACE FOAM RING ON OPPOSITE SHAFT END AND FILLER TUBE OVER SHAFT. PLACE MOTOR IN CARTON SHAFT UP. CLOSE FLAPS AND TAPE.
3. PLACE CARTON LABEL ON SHAFT EXTENSION END OF CARTON. PLACE (1) FLAT PAD ON PALLET. LAY CARTONS ON SIDE ON PALLET WITH LABELED END OUT AND VISIBLE FOR STORAGE.
4. PLACE (1) FLAT PAD BETWEEN EACH LAYER AND (1) ON TOP.
5. PLACE ALL INSPECTED STICKERS AND WRITING ON FLAT PAD.
6. CARTON LABELS MUST ALL FACE ONE DIRECTION TOWARD THE OPEN END OF THE PALLET. SEE 88834408.

DRAWING REVISION AC	REVISION BY MH	REV DATE/© DATE 6/6/2022	TOLERANCES (EXCEPT AS NOTED):				DRAWN BY FDP	Regal Rexnord Regal Beloit America, Inc.	
REQUEST NUMBER ECR-0218425	APPROVED BY PLA	DATE 6/6/2022	DEC.	INCH	mm	ANGLE	DATE 8/23/2017	DESCRIPTION	
REQUEST NUMBER DESCRIPTION UPDATE FASCO LOGO			.X	±0.1	[±3]	±1°	APPROVED BY PLA	OUTLINE MOTOR ASSY	
<small>COPYRIGHT (PER REVISION DATE) REGAL BELOIT AMERICA, INC. ALL RIGHTS RESERVED. PROPRIETARY AND CONFIDENTIAL INFORMATION - THIS DOCUMENT IS THE PROPERTY OF REGAL BELOIT AMERICA, INC. ("OWNER") AND CONTAINS OWNER'S PROPRIETARY INFORMATION. ANY PERSON, CORPORATION OR OTHER FIRM RECEIVING IT IS DEEMED, BY RECEIVING IT, TO AGREE THAT IT, AND/OR ANY PART OF IT, SHALL NOT BE DISCLOSED TO ANY PERSON, CORPORATION OR OTHER ENTITY, DUPLICATED, AND/OR USED, EXCEPT AS EXPRESSLY APPROVED IN WRITING IN ADVANCE BY OWNER. THIS DOCUMENT SHALL BE RETURNED TO OWNER UPON REQUEST. IT MAY BE SUBJECT TO CERTAIN RESTRICTIONS UNDER APPLICABLE EXPORT CONTROL LAWS AND REGULATIONS.</small>			REMOVE BURRS & BREAK SHARP EDGES: .003/.015 [.08/.38] X 45°			DATE 8/23/2017		MATERIAL	PROCESS/FINISH BLACK
			CORNER FILLETS: R.02 [.5]			MACHINED SURFACES: .125/ mm 3.2			REFERENCE
			mm DIMENSIONS IN [BRACKETS] ARE FOR REFERENCE ONLY			THIRD ANGLE PROJECTION		SIZE C	