

# PRODUCT INFORMATION PACKET

FASCO®

Model No: D091

Catalog No: D091

Ventilation Motor, 1/15 HP, 1 Ph, 60 Hz, 115/230 V, 3000 RPM, 1 Speed, 3.3" Diameter, TEFC



Regal and Fasco are trademarks of Regal Rexnord Corporation or one of its affiliated companies.

©2022 Regal Rexnord Corporation, All Rights Reserved. MC017097E

RegalRexnord



**Nameplate Specifications**

Output HP	1/15 Hp	Output KW	0.05 kW
Frequency	60 Hz	Voltage	115/230 V
Current	2.00/1.00 A	Speed	3000 rpm
Service Factor	1	Phase	1
Duty	Air Over	Insulation Class	B
Frame	3.3	Enclosure	Totally Enclosed Fan Cooled
Thermal Protection	Thermally Protected	Ambient Temperature	40 °C
UL	Recognized	CSA	N
CE	N	Number of Speeds	1

**Technical Specifications**

Electrical Type	Shaded Pole	Starting Method	Across The Line
Poles	2	Rotation	Clockwise Shaft End
Mounting	Extended Studs	Drive End Bearing	Ball
Opp Drive End Bearing	Ball	Frame Material	Steel
Shaft Type	Flat	Overall Length	9.55 in
Frame Length	4.50 in	Shaft Diameter	0.312 in
Shaft Extension	5.0 in		
Connection Drawing	SEE OUTLINE	Outline Drawing	712112939-S01

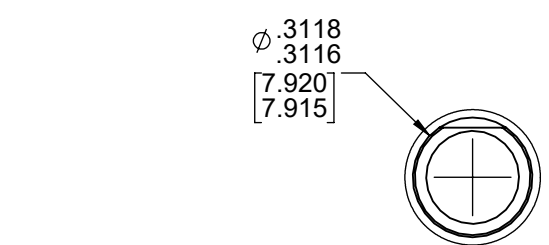
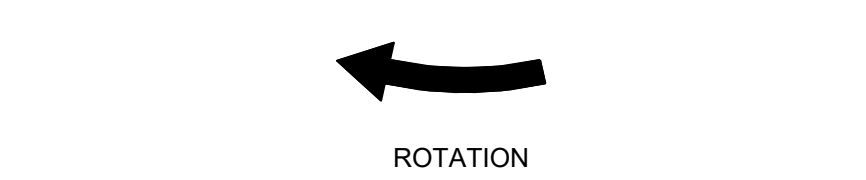
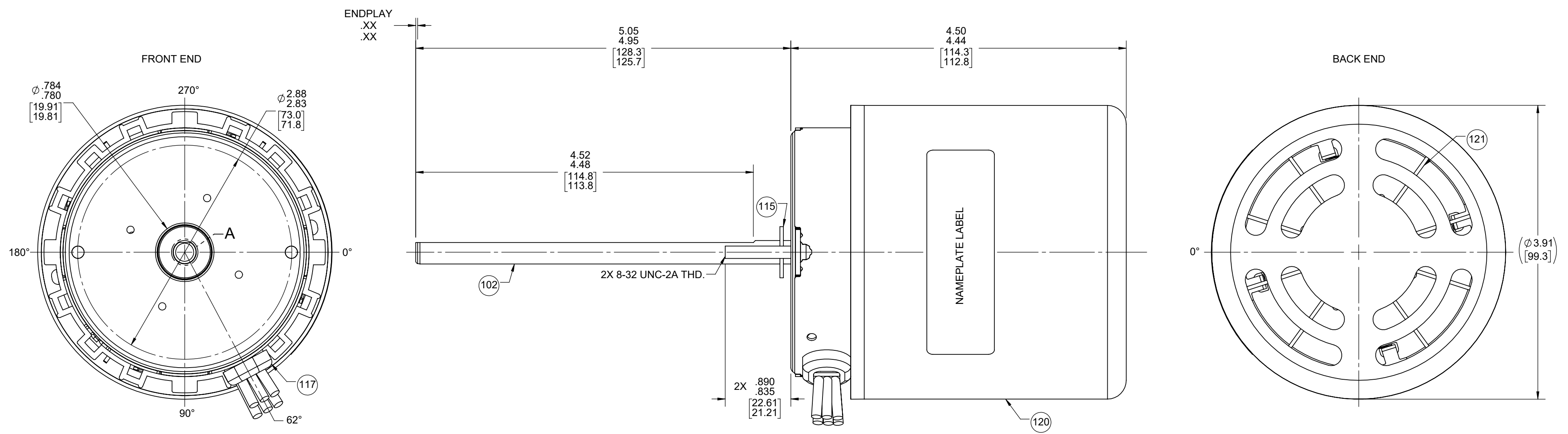
This is an uncontrolled document once printed or downloaded and is subject to change without notice. Date Created:11/29/2022

4

3

2

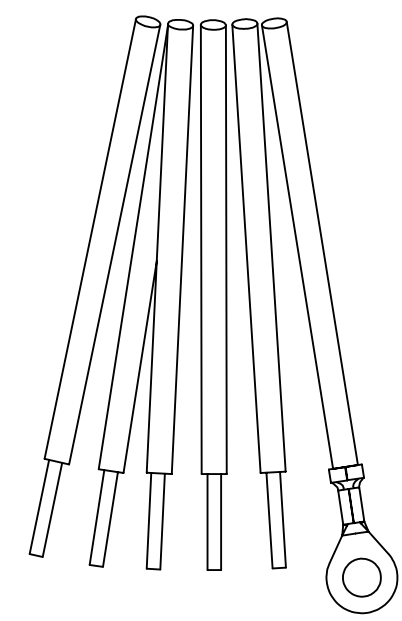
1



DETAIL A  
SHAFT

LEAD MATERIAL  
18 GA. 125°C 2/64 INSUL.  
X-LINKED POLY.  
BLUE, YELLOW, ORANGE,  
RED, BLACK  
21.00/19.00 [533.4/482.6]  
.56/.44 [14.2/11.2] STRIP

GROUND LEAD  
GRN/YEL  
13.00/11.00 [330.2/279.4]  
RING TERMINAL  
AMP 41333



61305568

**SAFETY WARNING**  
This motor must be grounded in accordance with local or national electrical codes to prevent possible injury due to electrical shock

**AVERTISSEMENT DE SÉCURITÉ**  
Ce moteur doit être fondée sur conformément à la réglementation locale ou national électrique codes pour prévenir d'éventuelles blessures en raison de choc électrique

APPLY IN A CONVENIENT LOCATION  
TO READ RIGHT FROM BACK END

- NOTES:  
1. MOTOR HAS 416 SS SHAFT.  
2. NO PACKAGING TAPE OVER CARTON LABEL.

00464537

00464204

**FASCO™**

Assembled In Mexico

No. 712112939 TYPE U21B T.P. AO  
115/230 V 60 Hz Class B  
2.0/1.0 A 3000 RPM E40513  
Model D091 Max Amb: 40°C  
Ref. 1/15 HP  
Sealed Ball Brg

Connection Diagram  
115 V 230 V

Orn — Line	Orn — Line
Yel — Line	Yel — Line
Blu — Line	Blu — Line
Red — Ins	Red — Ins
Blk — Ins	Blk — Ins
Grn/Yel — Ground	

61299553

CUSTOMER:	FASCO DIST.	APPLICATION:	COUNTER SALES					
CUSTOMER PN:	D091	MOTOR WEIGHT:						
	UP	ENVIRONMENT:	DAMP					
HORIZONTAL 	MOTOR TYPE			REFERENCE SAMPLE				
	SHADED POLE			X-0006359-2				
	B	LA	FR	A	S	C	E	
	00	21	28	T	07	EP	9	
	DOWN							
TYPICAL PERFORMANCE AT 115/230 VOLTS 60 HZ								
MOTOR SPEED	IDLE		LOADED			LOCKED		BREAK
	RPM	AMP	WATT	IN OZ	RPM	AMP	WATT	IN OZ
115 V	3553	1.38	82	25.2	3000	2.02	157	7.1
230 V	3553	.69	82	25.6	3000	1.01	158	7.4

DRAWING REVISION CD	REVISION BY KBB	REV DATE/© DATE 10/18/2022	TOLERANCES (EXCEPT AS NOTED): DEC. INCH mm ANGLE	DRAWN BY MLS		Regal Beloit America, Inc.
REQUEST NUMBER ECR-0221618	APPROVED BY SDM	DATE 10/18/2022	.X ±0.1 [±3] .XX ±0.01 [±0.3] .XXX ±0.005 [±0.13] .XXXX ±0.0005 [±0.013]	DATE 5/13/2021		
REQUEST NUMBER DESCRIPTION UPDATE SHAFT DETAIL DIM TO MATCH SHAFT PRINT			REMOVE BURRS & BREAK SHARP EDGES: .003/.015 [.08/.38] X 45° CORNER FILLETS: R.02 [5] MACHINED SURFACES: ±.25/ mm 3.2 mm DIMENSIONS IN [BRACKETS] INCH ARE FOR REFERENCE ONLY	APPROVED BY PLA	DESCRIPTION <b>OUTLINE</b> MOTOR ASSY	
<small>COPYRIGHT (PER REVISION DATE) REGAL BELOIT AMERICA, INC. ALL RIGHTS RESERVED. PROPRIETARY AND CONFIDENTIAL INFORMATION - THIS DOCUMENT IS THE PROPERTY OF REGAL BELOIT AMERICA, INC. (OWNER) AND CONTAINS OWNER'S PROPRIETARY INFORMATION. ANY PERSON, CORPORATION OR OTHER FIRM RECEIVING IT IS DEEMED, BY RECEIVING IT, TO AGREE THAT IT, AND/OR ANY PART OF IT, SHALL NOT BE DISCLOSED TO ANY PERSON, CORPORATION OR OTHER ENTITY, DUPLICATED, AND/OR USED, EXCEPT AS EXPRESSLY APPROVED IN WRITING IN ADVANCE BY OWNER. THIS DOCUMENT SHALL BE RETURNED TO OWNER UPON REQUEST. IT MAY BE SUBJECT TO CERTAIN RESTRICTIONS UNDER APPLICABLE EXPORT CONTROL LAWS AND REGULATIONS.</small>			DATE 5/13/2021	REFERENCE	MATERIAL	PROCESS/FINISH BLACK
THIRD ANGLE PROJECTION		SIZE C	DRAWING NUMBER 712112939	SHEET 1 OF 2		

4

3

2

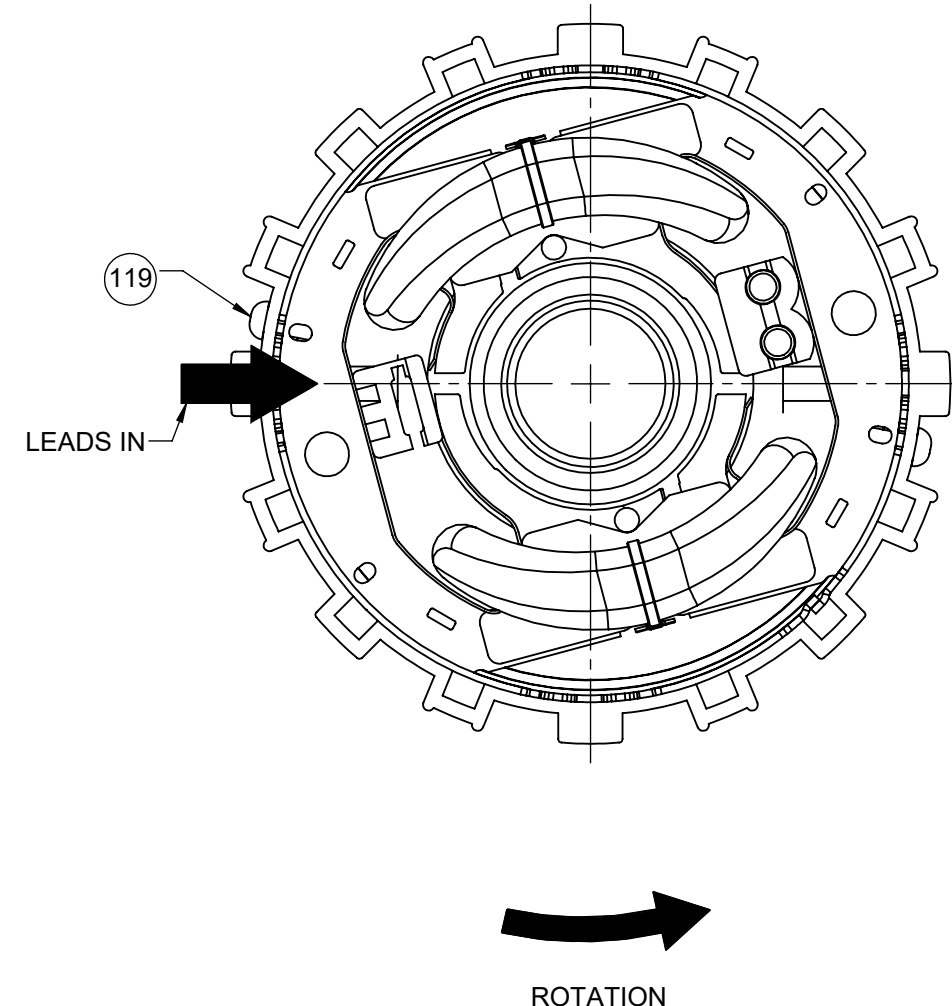
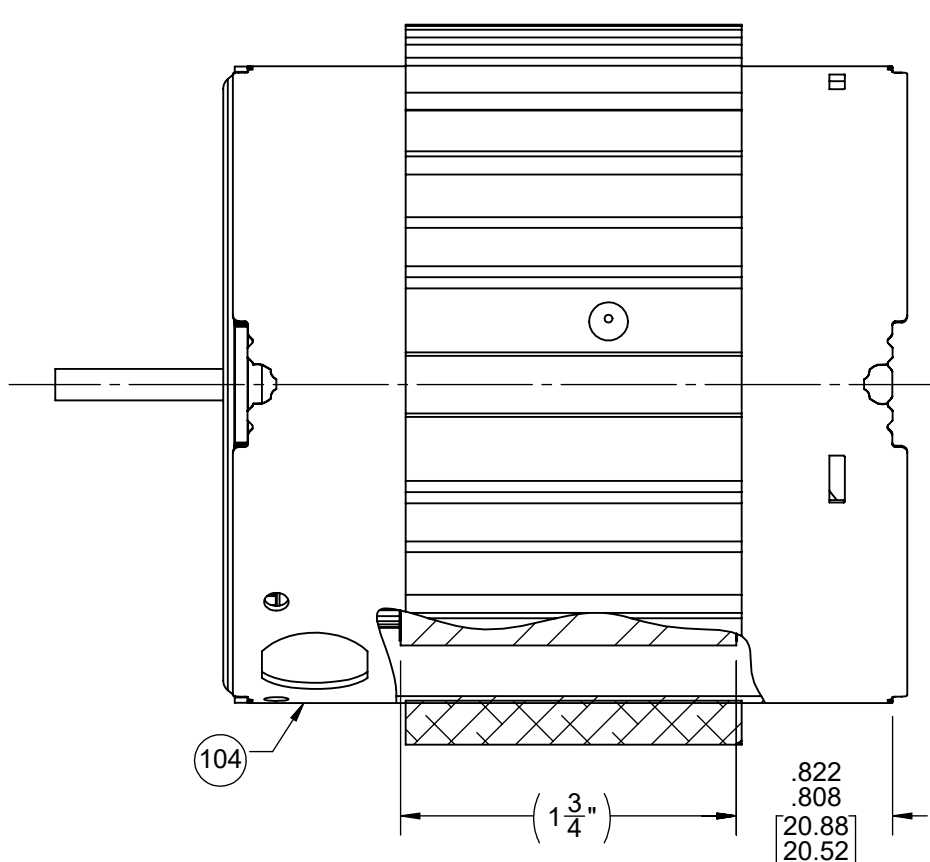
1

NOTES:

1. ALL SPACING THRU AIR BETWEEN WIRE AND METAL MUST BE AT LEAST .094 [2.39].
2. ASSEMBLE LOADING SPRING BETWEEN WASHER AND BEARING ON BACK END WITH SPRING FINGERS TOWARD BEARING.
3. ASSEMBLE BALL BEARINGS TO BEARING RETAINERS PER 88834419.

FRONT END

BACK END



**BLAST COOLED SPECIFICATIONS**

1. FAN MUST TRACK WITHIN .035 [.89] AND HAVE .10 [2.5] MIN. CLEARANCE TO BEARING BOSS AFTER PRESS ON OPERATION.
2. DIMENSION OVER END FRAMES 3.63/3.59 [92.2/91.2].
3. DRILL PILOT HOLE WITH A #37 DRILL .300/.275 [7.62/6.99] DEEP AT CENTER OF DRILL AND PIN COOLING BAND SECURELY TO STATOR AND MAIN FRAME ASSY, (2) PLACES 180° APART.
4. ASSEMBLE FAN COVER PER 88834269.

**PACKING SPECIFICATIONS**

1. PACK 1 PER CONTAINER, 24 CONTAINERS PER LAYER, 6 LAYERS PER PALLET, 144 MAX. PER PALLET, PER 88834200.
2. PLACE FILLER TUBE ON SHAFT EXTENSION END AND PLACE FILLER TUBE AT BACK OF THE MOTOR. PLACE MOTOR IN CARTON, LEADS DOWN, CLOSE FLAPS AND TAPE.
3. CARTON LABELS MUST ALL FACE ONE DIRECTION TOWARD THE OPEN END OF THE PALLET. SEE 88834408.
4. PLACE FLAT PAD ON PALLET, (1) BETWEEN EACH LAYER AND (1) ON TOP OF CARTON. PLACE ALL INSPECTION AND WRITING ON THE TOP FLAP OF PAD TO PREVENT MARKING ON CARTONS, PRIOR TO STRETCH WRAP.

DRAWING REVISION CD	REVISION BY KBB	REV DATE/@ DATE 10/18/2022	TOLERANCES (EXCEPT AS NOTED): DEC. INCH mm ANGLE	DRAWN BY MLS	Regal Beloit America, Inc.
REQUEST NUMBER ECR-0221618	APPROVED BY SDM	DATE 10/18/2022	.X ±0.1 [±3] ±1° .XX ±0.01 [±0.3] .XXX ±0.005 [±0.13] .XXXX ±0.0005 [±0.013]	DATE 5/13/2021	
REQUEST NUMBER DESCRIPTION UPDATE SHAFT DETAIL DIM TO MATCH SHAFT PRINT			REMOVE BURRS & BREAK SHARP EDGES: .003/.015 [.08/.38] X 45° CORNER FILLETS: R.02 [.5] MACHINED SURFACES: .125/ mm 3.2 INCH/mm	APPROVED BY PLA	DESCRIPTION OUTLINE MOTOR ASSY
<small>COPYRIGHT (PER REVISION DATE) REGAL BELOIT AMERICA, INC. ALL RIGHTS RESERVED. PROPRIETARY AND CONFIDENTIAL INFORMATION - THIS DOCUMENT IS THE PROPERTY OF REGAL BELOIT AMERICA, INC. ("OWNER") AND CONTAINS OWNER'S PROPRIETARY INFORMATION. ANY PERSON, CORPORATION OR OTHER FIRM RECEIVING IT IS DEEMED, BY RECEIVING IT, TO AGREE THAT IT, AND/OR ANY PART OF IT, SHALL NOT BE DISCLOSED TO ANY PERSON, CORPORATION OR OTHER ENTITY, DUPLICATED, AND/OR USED, EXCEPT AS EXPRESSLY APPROVED IN WRITING IN ADVANCE BY OWNER. THIS DOCUMENT SHALL BE RETURNED TO OWNER UPON REQUEST. IT MAY BE SUBJECT TO CERTAIN RESTRICTIONS UNDER APPLICABLE EXPORT CONTROL LAWS AND REGULATIONS.</small>			mm DIMENSIONS IN [BRACKETS] ARE FOR REFERENCE ONLY	DATE 5/13/2021	MATERIAL
THIRD ANGLE PROJECTION				SIZE C	PROCESS/FINISH BLACK
				DRAWING NUMBER 712112939	SHEET 2 OF 2

4

3

2

1