

# Hub City Bevel Gear Drives

## Model 790

### Features

- Shaft mounted design for direct mounting on drive shaft of equipment to be driven.
- Rugged cast iron housing designed for rigid gear and bearing support.
- Tapered roller bearings for endurance and strength.
- Hub City "Counter Flow" bearing lubrication system.
- Heavy-duty industrial seals to keep lubricant in and dirt out.
- Choice of two (2) gear ratios.
- Choice of three (3) stock output bore sizes.
- Hub City lubricant recommended. (Refer to section S)



### Rating Table

INPUT RPM†		STRAIGHT BEVEL GEAR		SPIRAL BEVEL GEAR	
		2:1 RATIO		Δ3.78:1 RATIO	
		OUTPUT RPM	RATINGS	OUTPUT RPM	RATINGS
3000	INPUT HORSEPOWER			800.0	64.00
	OUTPUT TORQUE IN. LBS.				4941.00
	‡INPUT O.H.L.				320.00
2400	INPUT HORSEPOWER			640.0	52.00
	OUTPUT TORQUE IN. LBS.				5018.00
	‡INPUT O.H.L.				376.00
1750	INPUT HORSEPOWER			467.0	39.00
	OUTPUT TORQUE IN. LBS.				5158.00
	‡INPUT O.H.L.				464.00
1150	INPUT HORSEPOWER		24.60		26.00
	OUTPUT TORQUE IN. LBS.	575.0	2696.00	307.0	5231.00
	‡INPUT O.H.L.		589.00		589.00
850	INPUT HORSEPOWER		18.53		19.00
	OUTPUT TORQUE IN. LBS.	425.0	2748.00	227.0	5170.00
	‡INPUT O.H.L.		699.00		699.00
690	INPUT HORSEPOWER		15.80		15.90
	OUTPUT TORQUE IN. LBS.	345.0	2886.00	184.0	5337.00
	‡INPUT O.H.L.		780.00		780.00
400	INPUT HORSEPOWER		9.69		9.40
	OUTPUT TORQUE IN. LBS.	200.0	3054.00	107.0	5426.00
	‡INPUT O.H.L.		900.00		900.00
300	INPUT HORSEPOWER		7.94		7.20
	OUTPUT TORQUE IN. LBS.	150.0	3336.00	80.0	5558.00
	‡INPUT O.H.L.		900.00		900.00
200	INPUT HORSEPOWER		5.35		4.80
	OUTPUT TORQUE IN. LBS.	100.0	3371.00	53.3	5562.00
	‡INPUT O.H.L.		900.00		900.00
100	INPUT HORSEPOWER		2.85		2.50
	OUTPUT TORQUE IN. LBS.	50.0	3592.00	26.7	5783.00
	‡INPUT O.H.L.		900.00		900.00

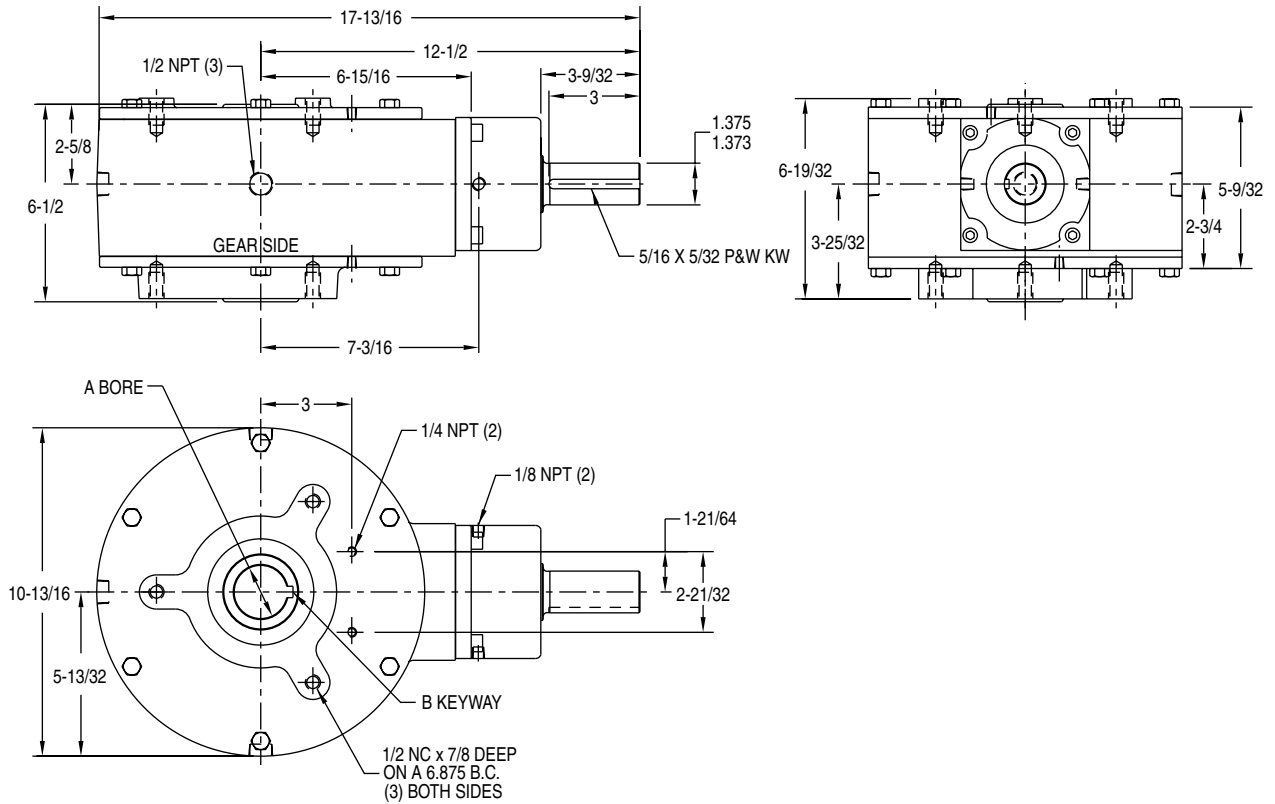
† FOR HIGHER INPUT SPEEDS CONSULT FACTORY.

‡ OVERHUNG LOAD IN LBS. AT CENTER OF SHAFT EXTENSIONS.

Δ CW INPUT ROTATION PREFERRED. CCW CONSULT FACTORY

# Hub City Bevel Gear Drives

## Model 790



FOR LUBRICATION AND INSTALLATION INSTRUCTIONS - REFER TO SECTION S

DIMENSIONS SHOWN ARE FOR REFERENCE ONLY.

DOWNLOAD AVAILABLE CAD MODELS AT: [WWW.HUBCITYINC.COM](http://WWW.HUBCITYINC.COM)

DRY SHIPPING WEIGHT 90 LBS.

BORE A	KEYWAY B
1-1/2	3/8 x 3/16
1-11/16	3/8 x 3/16
1-3/4	3/8 x 3/16

BORE TOLERANCE NOMINAL +.002