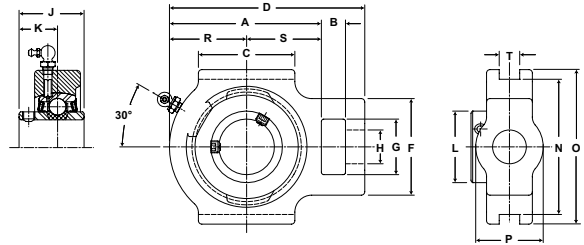




- Duty:** Standard
- Rolling Elements:** Ball
- Housing:** Cast Iron Wide Slot Take Up
- Self Alignment:** +/- 2 Degrees
- Lock:** Setscrew
- Seal:** Felt
- Optional Seal:** Contact
- Temperature:** -20° to 220°F



ST Series Standard Duty Take-UP Units - Setscrew Locking

Bore Diameter		Part No.	Bearing Insert No.	Basic Dynamic Rating lb/N	Dimensions inch / mm																Unit Wt. lb/kg
inch	mm				A	B	C	D	F	G	H Core	J	K	L	N	O	P Hub		R	S	
1/2	20	ST-8	2-08	2611	2 11/16	5/8	2	3 11/16	2	1 1/4	3/4	1 7/32	23/32	1 3/16	3	3 1/2	1 3/8	1 5/16	1 3/8	17/32	2.1
9/16																					
5/8																					
11/16																					
3/4	25	ST-9	2-09	2801	2 13/16	5/8	2	3 13/16	2	1 1/4	3/4	1 3/8	13/16	1 3/8	3	3 1/2	1 1/2	1 3/8	1 7/16	17/32	2.6
13/16																					
7/8																					
15/16																					
1	30	ST-10	2-010	11614	68.3	15.9	50.8	93.7	50.8	31.8	19.1	31.0	18.3	30.2	76.2	88.9	34.9	33.3	34.9	17/32	0.95
11/16																					
2-011																					
2-012																					
1 1/8	35	ST-11	2-011	4381	3 7/16	5/8	2 1/4	4 7/16	2 3/16	1 7/16	7/8	1 1/2	7/8	1 19/32	3 1/2	4	1 3/4	1 11/16	1 3/4	17/32	3.4
1 1/8																					
1 3/8																					
1 1/4																					
1 1/4	40	ST-12	2-012	7340	4 5/16	3/4	3 1/4	5 11/16	3 1/4	1 15/16	1 1/8	1 15/16	1 3/16	2 1/16	4	4 1/2	2 1/8	2 3/16	2 1/8	11/16	6.0
1 3/8																					
1 5/16																					
1 7/16																					
1 5/8	45	ST-19	2-19	32648	109.5	19.1	82.6	144.5	82.6	49.2	28.6	49.2	30.2	52.4	101.6	114.3	54.0	55.6	54.0	11/16	2.7
1 1/2																					
1 9/16																					
2																					
1 5/8	50	ST-24	2-18	7901	4 5/16	3/4	3 1/4	5 11/16	3 1/4	1 15/16	1 1/8	1 15/16	1 3/16	2 19/64	4	4 5/8	2 3/16	2 1/4	2 1/16	11/16	6.0
1 11/16																					
1 3/4																					
2																					
1 13/16	55	ST-20	2-14	35144	109.5	19.1	82.6	144.5	82.6	49.2	28.6	49.2	30.2	58.3	101.6	117.5	55.6	57.2	52.4	11/16	2.72
1 7/8																					
1 15/16																					
2																					
2	60	ST-25	2-10	7889	4 1/2	3/4	3 3/8	5 7/8	3 1/4	1 15/16	1 1/8	2 1/32	1 9/32	2 15/32	4	4 5/8	2 3/16	2 5/16	2 3/16	11/16	6.0
2 1/8																					
2 3/16																					
2																					
2 1/4	70	ST-26	2-110	35090	114.3	19.1	85.7	149.2	82.6	49.2	28.6	51.6	32.5	62.7	101.6	117.5	55.6	58.7	55.6	11/16	2.72
2 1/2																					
2 11/16																					
2																					
2 3/8	75	ST-27	2-111	9752	5	1	3 3/4	6 3/4	4	2 1/2	1 3/8	2 3/16	1 5/16	2 23/32	5 1/8	5 3/4	2 1/4	2 9/16	2 7/16	1 1/16	9.8
2 1/2																					
2 3/8																					
2 7/16																					
2 3/16	80	ST-28	2-112	43377	127.0	25.4	95.3	171.5	101.6	63.5	34.9	55.6	33.3	69.1	130.2	146.1	57.2	65.1	61.9	1 1/16	4.4
2 3/8																					
2 7/16																					
2																					
2 1/2	85	ST-29	2-113	11789	5 5/8	1 1/4	4	7 5/8	4	2 1/2	1 3/8	2 9/16	1 9/16	2 63/64	5 1/8	5 3/4	2 3/8	2 15/16	2 11/16	1 1/16	12.3
2 1/2																					
2 11/16																					
2																					
2 1/2	90	ST-30	2-114	52437	142.9	31.8	101.6	193.7	101.6	63.5	34.9	65.1	39.7	75.8	130.2	146.1	60.3	74.6	68.3	1 1/16	5.58
2 11/16																					
2																					
2 11/16																					
2 7/8	95	ST-31	2-115	13971	6 3/4	1 1/4	4 3/4	8 13/16	4 3/8	2 3/4	1 5/8	2 3/4	1 11/16	3 7/16	5 15/16	6 9/16	3 3/8	3 7/16	3 5/16	1 1/16	19.0
2 15/16																					
2																					
2 15/16																					
3 3/16	100	ST-32	2-2	62143	171.5	31.8	120.7	223.8	111.1	69.9	41.3	69.9	42.9	87.3	150.8	166.7	85.7	87.3	84.1	1 1/16	8.62
2 1/2																					
2 11/16																					
2																					
3 1/4	105	ST-33	2-22	14839	7 1/16	1 1/4	4 3/4	9 1/8	4 3/8	2 3/4	1 5/8	3 1/16	1 3/4	3 41/64	5 15/16	6 9/16	3 3/8	3 5/8	3 7/16	1 1/16	19.0
3 3/8																					
3 7/16																					
2																					
3 1/4	110	ST-34	2-222	66004	179.4	31.8	120.7	231.8	111.1	69.9	41.3	77.8	44.5	92.5	150.8	166.7	85.7	92.1	87.3	27.0	8.62
3 3/8																					
3 7/16																					
2																					
3 1/4	115	ST-35	2-23	17412	7 3/16	1 1/4	4 3/4	9 1/4	4 3/8	2 3/4	1 5/8	3 1/4	1 15/16	3 59/64	6 1/2	7 1/4	3 3/8	3 3/4	3 7/16	1 1/16	22.1
3 3/8																					
3 7/16																					
2																					
3 7/16	120	ST-39	2-27	77449	182.6	31.8	120.7	235.0	111.1	69.9	41.3	82.6	49.2	99.6	165.1	184.2	85.7	95.3	87.3	27.0	10.02
3 3/8																					
3 7/16																					
2																					
3 7/16	125	ST-211	5211	18681	7 5/8	1 1/2	6 3/16	10 1/4	4 7/8	2 7/8	1 7/8	3 3/8	2 1/32	4 5/32	6 13/16	7 13/16	3 1/2	3 7/8	3 3/4	1 13/16	31.4
3 7/16																					
3 7/16																					
2																					
3 7/16	130	ST-212	5212	83093	193.7	38.1	157.2	260.4	123.8	73.0	47.6	85.7	51.6	105.6	173.0	198.4	88.9	98.4	95.3	46.0	14.2
3 7/16																					
3 7/16																					
2																					

For Standard Duty Bearing Inserts-Single Lock see page G-92.
 For Take-Up Frames see pages G-76 to G-78.