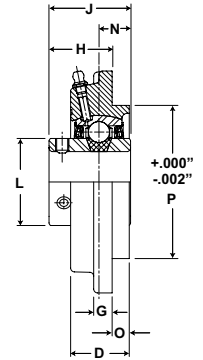
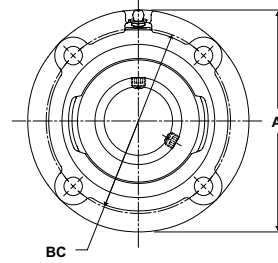




- Duty:** Standard
- Rolling Elements:** Ball
- Housing:** Cast Iron Piloted Flange Cartridge
- Self Alignment:** +/- 2 Degrees
- Lock:** Setscrew
- Seal:** Felt
- Optional Seal:** Contact
- Temperature:** -20° to 220°F



SFC Series Standard Duty Flange Cartridge Units - Setscrew locking

Bore Diameter		Part No.	Bearing Insert No.	Basic Dynamic Rating lb/N	Dimensions inch / mm										Bolt Size	Unit Wt. lb/kg													
inch	mm				A	BC	D	G	H	J	L	N	O	P*															
1 1/8	30	SFC-18	2-12	4381	4 3/8	3 5/8	1 3/16	3/8	1 5/16	1 9/16	1 19/32	5/8	1/4	3.000	5/16	3.0													
1 3/16		SFC-19	2-13														19487	111.1	92.1	30.2	9.5	33.3	39.7	40.5	15.9	6.4	76.20	1.36	
1 1/4		SFC-20R	1-14														5782	5	4 1/8	1 9/32	3/8	1 5/16	1 11/16	1 55/64	11/16	3/8	3.375	3/8	3.9
1 1/4		SFC-206	5206																										
1 1/2	40	SFC-24	2-18	7340	5 1/4	4 3/8	1 27/64	7/16	1 1/2	1 15/16	2 1/16	3/4	7/16	3.625	3/8	4.7													
1 9/16		SFC-25	2-19														32648	133.4	111.1	36.1	11.1	38.1	49.2	52.4	19.1	11.1	92.08	2.13	
1 9/16		SFC-208	5208														7901	6 1/8	5 1/8	1 29/64	7/16	1 1/2	1 15/16	2 19/64	3/4	7/16	4.250	7/16	6.0
1 5/8	SFC-26	2-110	35144	155.6	130.2	36.9	11.1	38.1	49.2	58.3	19.1	11.1	107.95	2.72															
1 11/16	45	SFC-27	2-111	7901	6 1/8	5 1/8	1 29/64	7/16	1 1/2	1 15/16	2 19/64	3/4	7/16	4.250	7/16	6.0													
1 3/4		SFC-28	2-112														35144	155.6	130.2	36.9	11.1	38.1	49.2	58.3	19.1	11.1	107.95	2.72	
1 3/4		SFC-209	5209														7889	6 1/8	5 1/8	1 27/64	7/16	1 9/16	2 1/32	2 15/32	3/4	15/32	4.250	7/16	6.5
1 7/8	SFC-30	2-114	35090	155.6	130.2	36.1	11.1	39.7	51.6	62.7	19.1	11.9	107.95	2.95															
1 15/16	50	SFC-31	2-115	7889	6 1/8	5 1/8	1 27/64	7/16	1 9/16	2 1/32	2 15/32	3/4	15/32	4.250	7/16	6.5													
2		SFC-32R	1-2														35090	155.6	130.2	36.1	11.1	39.7	51.6	62.7	19.1	11.9	107.95	2.95	
2		SFC-210	5210														9752	6 3/8	5 3/8	1 5/8	7/16	1 9/16	2 3/16	2 23/32	7/8	5/8	4.500	7/16	7.5
2 1/8	SFC-34	2-22	43377	161.9	136.5	41.3	11.1	39.7	55.6	69.1	22.2	15.9	114.30	3.40															
2 3/16	55	SFC-35	2-23	43377	6 3/8	5 3/8	1 5/8	7/16	1 9/16	2 3/16	2 23/32	7/8	5/8	4.500	7/16	7.5													
2 3/16		SFC-211	5211														11789	181.0	152.4	46.0	12.7	42.9	65.1	75.8	25.4	22.2	127.00	4.76	
2 1/4		SFC-36	2-24														52437	181.0	152.4	46.0	12.7	42.9	65.1	75.8	25.4	22.2	127.00	4.76	
2 3/8	60	SFC-38	2-26	11789	7 1/8	6	1 13/16	1/2	1 11/16	2 9/16	2 63/64	1	7/8	5.000	1/2	10.5													
2 7/16		SFC-39	2-27														52437	181.0	152.4	46.0	12.7	42.9	65.1	75.8	25.4	22.2	127.00	4.76	
2 7/16		SFC-212	5212														13971	7 5/8	6 1/2	2 5/32	9/16	1 3/4	2 27/32	3 7/16	1 5/32	1 3/32	5.500	1/2	14.5
2 11/16	SFC-43	2-211	62143	193.7	165.1	54.8	14.3	44.5	72.2	87.3	29.4	27.8	139.70	6.58															
2 11/16	70	SFC-214	5214	14839	8 3/4	7 1/2	2 5/16	9/16	2	3 1/16	3 41/64	1 5/16	1 1/16	6.375	5/8	18.7													
2 7/8		SFC-46	2-214														66004	222.3	190.5	58.7	14.3	50.8	77.8	92.5	33.3	27.0	161.93	8.48	
2 15/16		SFC-47	2-215	5215	17412	8 3/4	7 1/2	2 7/16	21/32	2	3 1/4	3 59/64	1 5/16	1 1/4	6.375	5/8	20.0												
2 15/16	SFC-215	5215	77449	222.3														190.5	61.9	16.7	50.8	82.6	99.6	33.3	31.8	161.93	9.07		
3 3/16	80	SFC-51	2-33	17412	8 3/4	7 1/2	2 7/16	21/32	2	3 1/4	3 59/64	1 5/16	1 1/4	6.375	5/8	20.0													
3 3/16	80	SFC-216	5216	77449	222.3	190.5	61.9	16.7	50.8	82.6	99.6	33.3	31.8	161.93	9.07														

For Standard Duty Bearing Inserts-Single Lock see page G-92.
 *Recommended hole size for pilot +.002" / -.000".

Metric dimensions for reference only.