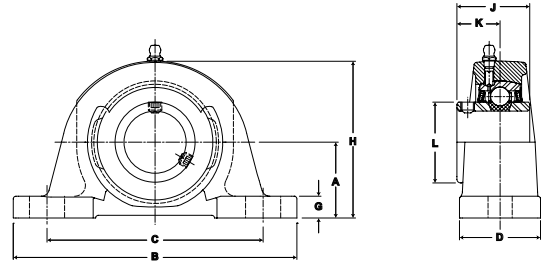




- Duty:** Standard
- Rolling Elements:** Ball
- Housing:** Cast Iron Pillow Block – Low Base
- Self Alignment:** +/- 2 Degrees
- Lock:** Setscrew
- Seal:** Felt
- Optional Seal:** Contact
- Temperature:** -20° to 220°F



NPL Series Standard Duty Pillow Blocks - Setscrew Locking

Bore Diameter		Part No.	Bearing Insert No.	Basic Dynamic Rating lb/N	Dimensions inch / mm								Bolt Size	Unit Wt. lb/kg														
inch	mm				A	B	C		D	G	H	J			K	L												
						min.	max.																					
1/2		NPL-8	2-08	2611	1 1/16	5	3 3/8	4 1/8	1 1/2	3/8	2 5/16	1 7/32	23/32	1 3/16	3/8	1.7												
9/16		NPL-9	2-09		27.0	127.0	85.7	104.8	38.1	9.5	58.7	31.0	18.3	30.2		.77												
5/8		NPL-10	2-010		11614																							
11/16		NPL-11	2-011																									
3/4		NPL-12	2-012	2611	1 1/4	5	3 3/8	4 1/8	1 1/2	7/16	2 1/2	1 7/32	23/32	1 3/16	3/8	1.7												
	20	NPL-204	5204		31.8	127.0	85.7	104.8	38.1	11.1	63.5	31.0	18.3	30.2		.77												
13/16		NPL-13	2-013	2801	1 5/16	5 1/2	3 7/8	4 3/8	1 1/2	1/2	2 11/16	1 3/8	13/16	1 3/8	3/8	2.0												
7/8		NPL-14	2-014														12459	33.3	139.7	98.4	111.1	38.1	12.7	68.3	34.9	20.6	34.9	.91
15/16		NPL-15	2-015																									
1		NPL-16	2-1																									
	25	NPL-205	5205																									
1 1/16		NPL-17	2-11	4381	1 9/16	6 1/2	4 7/16	5 1/16	1 7/8	7/16	3 1/4	1 1/2	7/8	1 19/32	1/2	3.6												
1 1/8		NPL-18	2-12														19487	39.7	165.1	112.7	128.6	47.6	11.1	82.6	38.1	22.2	40.5	1.63
1 3/16		NPL-19	2-13																									
1 3/8		NPL-20R	1-14																									
1 1/4	30	NPL-206	5206																									
1 1/4		NPL-20	2-14	5782	1 13/16	6 9/16	4 11/16	5 5/16	1 7/8	9/16	3 11/16	1 11/16	1	1 55/64	1/2	4.4												
1 5/16		NPL-21	2-15														25718	46.0	166.7	119.1	134.9	47.6	14.3	93.7	42.9	25.4	47.2	2.00
1 3/8		NPL-22	2-16																									
1 7/16		NPL-23	2-17																									
	35	NPL-207	5207																									
1 1/2		NPL-24	2-18	7340	1 15/16	7 1/4	4 7/8	5 7/8	2 1/8	11/16	3 15/16	1 15/16	1 3/16	2 1/16	1/2	5.7												
1 9/16		NPL-25	2-19														32648	49.2	184.2	123.8	149.2	54.0	17.5	100.0	49.2	30.2	52.4	2.59
	40	NPL-208	5208																									
1 5/8		NPL-26	2-110	7901	2 1/16	7 1/2	5 7/16	6 1/16	2 1/8	5/8	4 3/16	1 15/16	1 3/16	2 19/64	1/2	6.2												
1 11/16		NPL-27	2-111														35144	52.4	190.5	138.1	154.0	54.0	15.9	106.4	49.2	30.2	58.3	2.81
1 3/4		NPL-28	2-112																									
	45	NPL-209	5209																									
1 13/16		NPL-29	2-113	7889	2 3/16	8 1/8	6	6 1/2	2 3/8	11/16	4 1/2	2 1/32	1 9/32	2 15/32	5/8	7.8												
1 7/8		NPL-30	2-114														35090	55.6	206.4	152.4	165.1	60.3	17.5	114.3	51.6	32.5	62.7	3.54
1 15/16		NPL-31	2-115																									
2		NPL-32R	1-2																									
	50	NPL-210	5210																									
2		NPL-32	2-2	9752	2 7/16	8 5/8	6 1/2	7	2 3/8	11/16	4 15/16	2 3/16	1 5/16	2 23/32	5/8	9.6												
2 1/8		NPL-34	2-22														43377	61.9	219.1	165.1	177.8	60.3	17.5	125.4	55.6	33.3	69.1	4.35
2 3/16		NPL-35	2-23																									
	55	NPL-211	5211																									
2 1/4		NPL-36	2-24	11789	2 11/16	9 1/2	6 7/8	7 5/8	2 3/4	13/16	5 1/2	2 9/16	1 9/16	2 63/64	5/8	13.5												
2 3/8		NPL-38	2-26														52437	68.3	241.3	174.6	193.7	69.9	20.6	139.7	65.1	39.7	75.8	6.12
2 7/16		NPL-39	2-27																									
	60	NPL-212	5212																									
2 11/16		NPL-43	2-211	13971	3	11 1/4	7 1/8	8 7/8	3 1/4	1 1/16	6 1/4	2 3/4	1 11/16	3 7/16	3/4	21.5												
				62143	76.2	285.8	181.0	225.4	82.6	27.0	158.8	69.9	42.9	87.3	9.75													

For Standard Duty Bearing Inserts-Single Lock see page G-92.