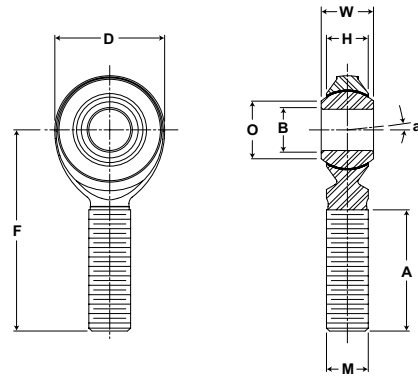


# Rod End Bearings **SEALMASTER®**



- Basic Construction Type:** Male 2 pc. General Purpose, Precision
- Outer Member Material:** Carbon Steel with Protective Plating for Corrosion Resistance
- Ball Material:** Alloy Steel, Heat Treated, Chrome Plated
- Feature:** PTFE Fabric Liner



## CFM-T Series Male Rod Ends

Part No.	Dimensions inch / mm									Max Static Radial Load lb/N	Misalignment Angle a Deg. +/-	Unit Wt. lb/kg
	B	W	H	D	F	A	M	Ball Diam.	O			
	+0.0015 -0.0005	+0.000 -0.005	+0.015 -0.015	+0.031 -0.031	+0.015 -0.015	Min.	Class UNF-3A	Ref.	Ref.			
CFM-3T	.1900	.312	.250	.625	1.250	.719	#10-32	.437	.306	865	6 1/2	.030
	4.826	7.92	6.35	15.88	31.75	18.26		11.10	7.77	3848		.014
CFM-4T	.2500	.375	.281	.750	1.562	.969	1/4-28	.500	.331	1550	8	.050
	6.350	9.53	7.14	19.05	39.67	24.61		12.70	8.41	6895		.023
CFM-5T	.3125	.437	.344	.875	1.875	1.219	5/16-24	.625	.447	2080	7	.080
	7.938	11.10	8.74	22.23	47.63	30.96		15.88	11.35	9252		.036
CFM-6T	.3750	.500	.406	1.000	1.938	1.219	3/8-24	.718	.517	2950	6	.120
	9.525	12.70	10.31	25.40	49.23	30.96		18.24	13.13	13122		.054
CFM-7T	.4375	.562	.437	1.125	2.125	1.344	7/16-20	.812	.586	3160	7	.170
	11.113	14.27	11.10	28.58	53.98	34.14		20.62	14.88	14056		.077
CFM-8T	.5000	.625	.500	1.312	2.438	1.469	1/2-20	.937	.698	4920	6	.260
	12.700	15.88	12.70	33.32	61.93	37.31		23.80	17.73	21885		.118
CFM-10T	.6250	.750	.562	1.500	2.625	1.594	5/8-18	1.125	.839	5460	8	.410
	15.875	19.05	14.27	38.10	66.68	40.49		28.58	21.31	24287		.186
CFM-12T	.7500	.875	.687	1.750	2.875	1.719	3/4-16	1.312	.978	8300	7	.640
	19.050	22.23	17.45	44.45	73.03	43.66		33.32	24.84	36920		.290
CFM-16T	1.0000	1.375	1.000	2.750	4.125	2.094	1 1/4-12	1.875	1.269	21000	8 1/2	2.250
	25.400	34.93	25.40	69.85	104.78	53.19		47.63	32.23	93413		1.021

**NOTES**

1. To order left hand threaded units add letter "L" to part number prefix. Example: CFML-8T.
2. "T" in part number prefix indicates PTFE liner.
3. Add letter "Y" to the part number suffix to indicate stud; Example: CFM-8TY.
4. For design modifications, see page J-13.