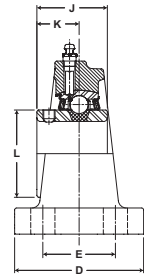
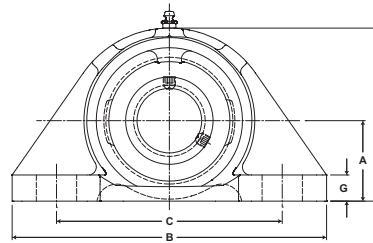




- Duty:** Medium
- Rolling Elements:** Ball
- Housing:** Cast Iron Four Bolt Pillow Block - High Base
- Self Alignment:** +/- 2 Degrees
- Lock:** Setscrew
- Seal:** Felt
- Optional Seal:** Contact
- Temperature:** -20° to 220°F
- Relube:** Relube



MFP Series Medium Duty Four-Bolt Base Pillow Blocks - Setscrew Locking

| Bore Diameter | | Part No. | Bearing Insert No. | Basic Dynamic Rating lb/N | Dimensions inch / mm | | | | | | | | | | Bolt Size | Unit Wt. lb/kg | |
|---------------|-------|----------|--------------------|---------------------------|----------------------|--------|---------|---------|-------|-------|--------|---------|---------|---------|-----------|----------------|-------|
| | | | | | A | B | C | | D | E | G | H | J | K | | | L |
| inch | mm | | | | | | min. | max. | | | | | | | | | |
| 1 15/16 | 50 | MFP-31 | 3-115 | 9752 43377 | 2 1/2 | 9 3/4 | 6 3/8 | 7 5/8 | 4 | 2 1/4 | 13/16 | 5 3/8 | 2 3/16 | 1 5/16 | 2 23/32 | 5/8 | 13.7 |
| 2 | | MFP-32 | 2-2 | | 63.5 | 247.7 | 161.9 | 193.7 | 101.6 | 57.2 | 20.6 | 136.5 | 55.6 | 33.3 | 69.1 | | 6.21 |
| | | MFP-310 | 5310 | | | | | | | | | | | | | | |
| 2 3/16 | 55 | MFP-35 | 3-23 | 11789 52437 | 2 3/4 | 10 1/4 | 6 7/8 | 8 1/8 | 4 1/8 | 2 1/4 | 7/8 | 5 13/16 | 2 9/16 | 1 9/16 | 2 63/64 | 5/8 | 17.0 |
| 2 1/4 | | MFP-36 | 2-24 | | 69.9 | 260.4 | 174.6 | 206.4 | 104.8 | 57.2 | 22.2 | 147.6 | 65.1 | 39.7 | 75.8 | | 7.71 |
| | | MFP-311 | 5311 | | | | | | | | | | | | | | |
| 2 7/16 | 65 | MFP-39 | 3-27 | 13971 62143 | 3 | 11 1/4 | 7 1/2 | 9 | 4 1/2 | 2 5/8 | 1 | 6 1/2 | 2 3/4 | 1 11/16 | 3 7/16 | 5/8 | 23.3 |
| 2 1/2 | | MFP-40 | 3-28 | | 76.2 | 285.8 | 190.5 | 228.6 | 114.3 | 66.7 | 25.4 | 165.1 | 69.9 | 42.9 | 87.3 | | 10.57 |
| | | MFP-313 | 5313 | | | | | | | | | | | | | | |
| 2 11/16 | 70 | MFP-43 | 3-211 | 14839 | 3 1/2 | 13 | 9 | 10 1/2 | 5 | 2 3/4 | 1 1/8 | 7 1/4 | 3 1/16 | 1 3/4 | 3 41/64 | 3/4 | 34.0 |
| | | MFP-314 | 5314 | 66004 | 88.9 | 330.2 | 228.6 | 266.7 | 127.0 | 69.9 | 28.6 | 184.2 | 77.8 | 44.5 | 92.5 | | 15.42 |
| 2 15/16 | 75 | MFP-47 | 3-215 | 17412 77449 | 3 1/2 | 13 | 9 | 10 1/2 | 5 | 2 3/4 | 1 | 7 3/8 | 3 1/4 | 1 15/16 | 3 59/64 | 3/4 | 36.5 |
| 3 | | MFP-48 | 3-3 | | 88.9 | 330.2 | 228.6 | 266.7 | 127.0 | 69.9 | 25.4 | 187.3 | 82.6 | 49.2 | 99.6 | | 16.56 |
| | | MFP-315 | 5315 | | | | | | | | | | | | | | |
| 3 3/16 | 80 | MFP-51 | 3-33 | 18681 83093 | 4 | 15 | 10 3/4 | 12 1/4 | 5 | 3 | 1 1/16 | 8 7/16 | 3 3/8 | 2 1/32 | 4 5/32 | 3/4 | 44.5 |
| 3 1/4 | | MFP-52 | 2-34 | | 101.6 | 381.0 | 273.1 | 311.2 | 127.0 | 76.2 | 27.0 | 214.3 | 85.7 | 51.6 | 105.6 | | 20.18 |
| | | MFP-316 | 5316 | | | | | | | | | | | | | | |
| 3 7/16 | 3 1/2 | MFP-55 | 3-37 | 21566 | 4 | 15 | 10 3/4 | 12 1/4 | 5 | 3 | 1 1/16 | 8 7/16 | 3 25/32 | 2 7/32 | 4 25/64 | 3/4 | 48.6 |
| | | MFP-56 | 2-38 | 95926 | 101.6 | 381.0 | 273.1 | 311.2 | 127.0 | 76.2 | 27.0 | 214.3 | 96.0 | 56.4 | 111.5 | | 22.04 |
| 3 15/16 | 100 | MFP-63 | 3-315 | 29905 133017 | 5 | 17 | 12 7/16 | 14 1/16 | 6 | 3 1/2 | 1 1/4 | 10 1/4 | 4 5/8 | 2 11/16 | 5 11/64 | 7/8 | 83.5 |
| 4 | | MFP-64 | 3-4 | | 127.0 | 431.8 | 315.9 | 357.2 | 152.4 | 88.9 | 31.8 | 260.4 | 117.5 | 68.3 | 131.4 | | 37.87 |
| | | MFP-320 | 5320 | | | | | | | | | | | | | | |

For Medium Duty Bearing Inserts-Single Lock see page G-95.