

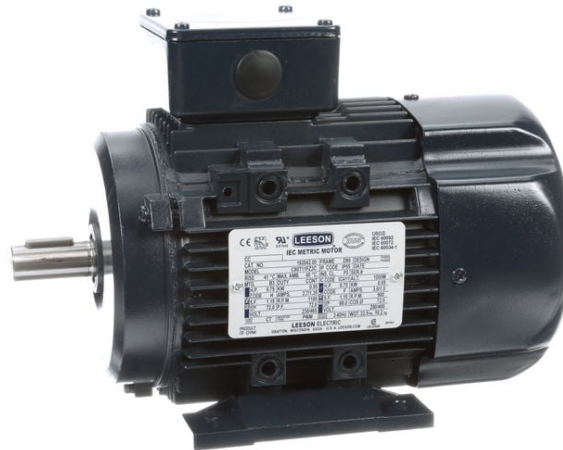
PRODUCT INFORMATION PACKET



Model No: 192042.00

Catalog No: 192042.00

LEESON® PASSPORT 0.75 HP General Purpose, 3 phase, 1200 RPM, 230/460 V, 80 Frame, TEFC



Regal and Leeson are trademarks of Regal Rexnord Corporation or one of its affiliated companies.

©2023 Regal Rexnord Corporation, All Rights Reserved. MC017097E



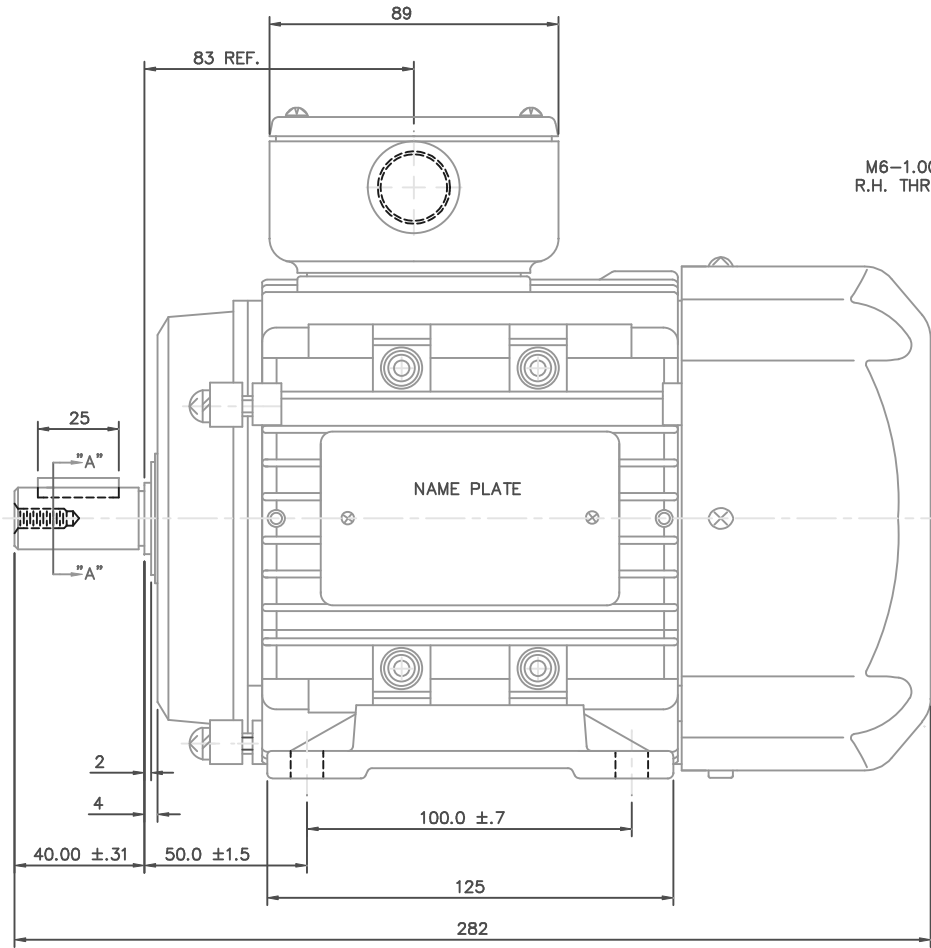


Nameplate Specifications

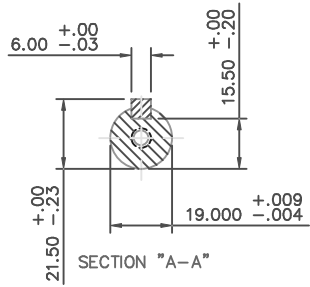
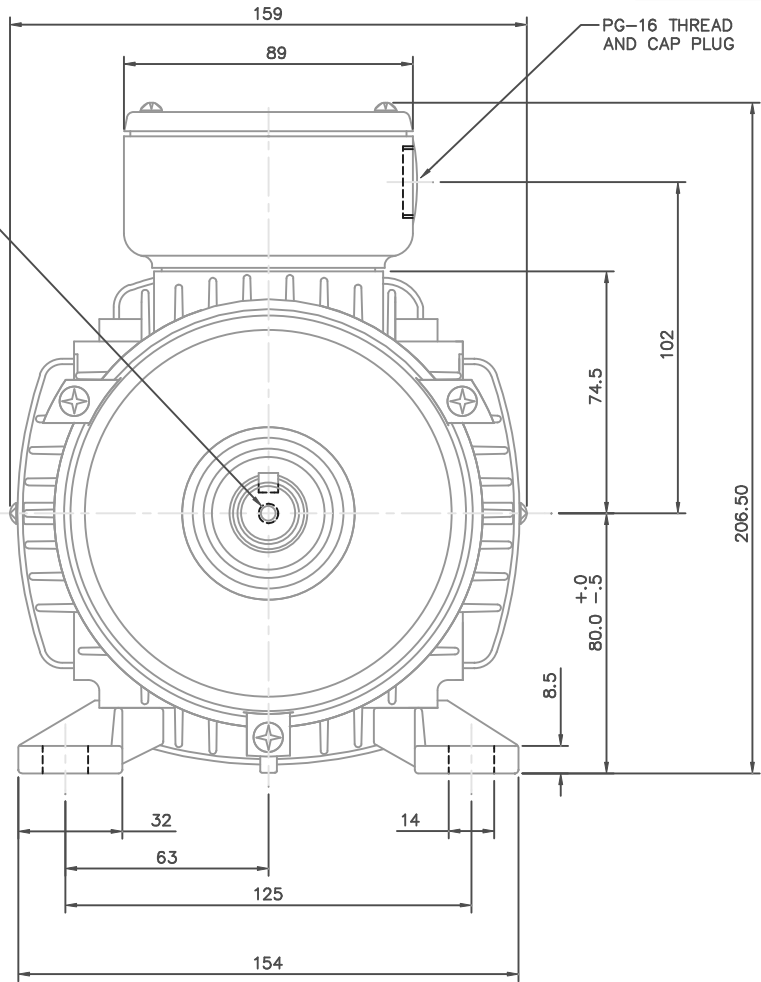
Phase	3	Output HP	0.75 & 0.75 Hp
Output KW	0.56 & 0.56 kW	Voltage	230/460 & 200/400 V
Speed	1130 & 910 rpm	Service Factor	1.15 & 1.15
Frame	80	Enclosure	Totally Enclosed Fan Cooled
Thermal Protection	No Protection	Efficiency	72 & 68 %
Ambient Temperature	40 °C	Frequency	60 & 50 Hz
Current	2.7/1.35 & 3.0/1.5 A	Power Factor	72
Duty	Continuous	Insulation Class	F
Design Code	B	KVA Code	H
Drive End Bearing Size	6204	Opp Drive End Bearing Size	6204
UL	Recognized	CSA	Y
CE	N	IP Code	55
Number of Speeds	1		

Technical Specifications

Electrical Type	Squirrel Cage Inverter Rated	Starting Method	Line Or Inverter
Poles	6	Rotation	Reversible
Resistance Main	7.64 Ohms	Mounting	B3
Motor Orientation	Horizontal	Drive End Bearing	Ball
Opp Drive End Bearing	Ball	Frame Material	Aluminum
Shaft Type	IEC	Overall Length	11.10 in
Frame Length	5.31 in	Shaft Diameter	0.750 in
Shaft Extension	1.57 in	Assembly/Box Mounting	F3
Inverter Load	CONSTANT 20:1		
Outline Drawing	16986100	Connection Drawing	005465.01

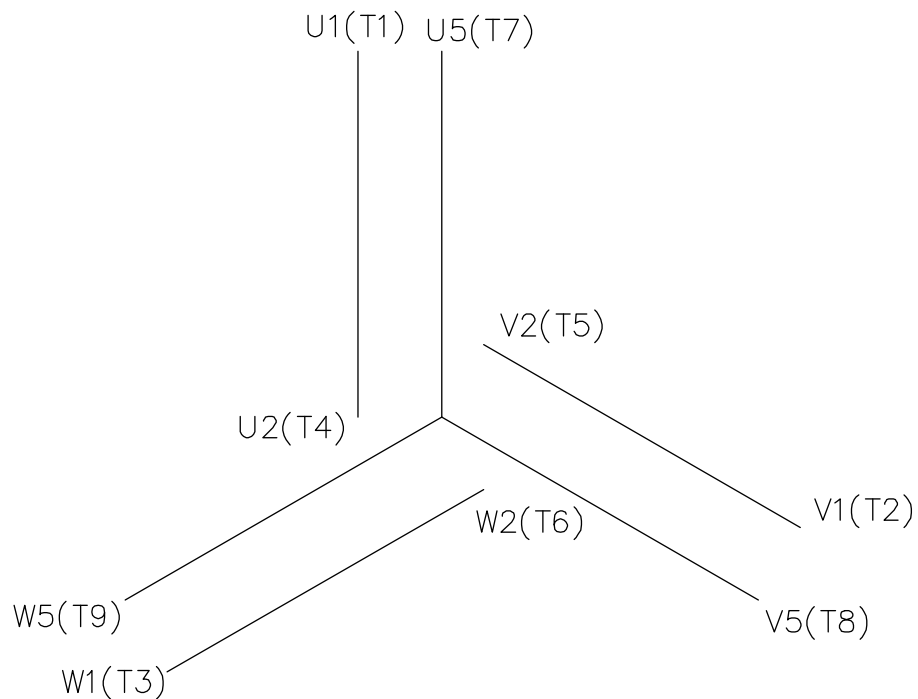


M6-1.00 x 16 DEEP
R.H. THREADED SHAFT



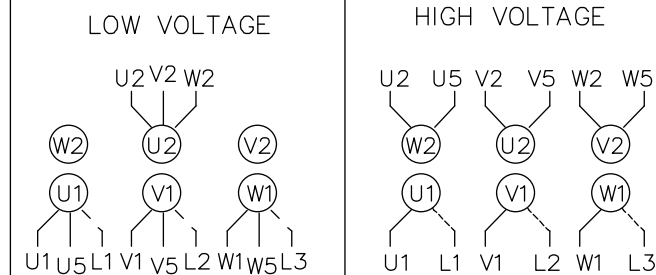
NO.		REVISION	BY & DATE	CHK	ANG	±1/2"	FINISH	CAD FILE		16986100	SIZE	DRAWING NO.	REV.
THIS DRAWING IN DESIGN AND DETAIL IS OUR PROPERTY AND MUST NOT BE USED EXCEPT IN CONNECTION WITH OUR WORK. ALL RIGHTS OF DESIGN AND INVENTION ARE RESERVED. THIS IS AN ELECTRONICALLY GENERATED DOCUMENT - DO NOT SCALE THIS PRINT				RFP				CAD FILE		16986100	B	169861-00	
				DIST									

TOLERANCES UNLESS SPECIFIED		LEESON		ELECTRIC MOTORS GEARMOTORS AND DRIVES		DRAWN ADS 01/22/02	
DEC.	INCHES					CHK	
.X	±.1	TITLE		METRIC OUTLINE, IMB3		APPD	
.XX	±.03	MAT'L		IEC-80 FRAME TEFC		SCALE 1=1.5	
.XXX	±.005	FINISH		ALUMINUM		REF OSVC-300-552	
.XXXX	±.0005	PREV				FMF LEESON STOCK	



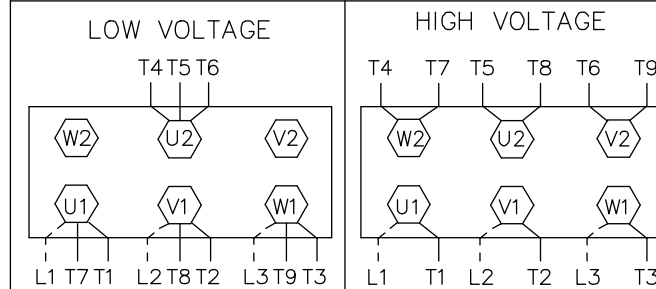
REF. DECAL (IEC) 080644
REF. DECAL (NEMA) 080446

IEC MARKINGS



LINE VOLTAGE	L1	L2	L3	JOIN		
TERMINAL	U1	V1	W1	W2	U2	V2
LOW	U1,U5	V1,V5	W1,W5	---	U2,V2,W2	---
HIGH	U1	V1	W1	U2,U5	V2,V5	W2,W5

NEMA MARKINGS



LINE VOLTAGE	L1	L2	L3	JOIN		
TERMINAL	U1	V1	W1	W2	U2	V2
LOW	T1, T7	T2, T8	T3, T9	---	T4,T5,T6	---
HIGH	T1	T2	T3	T4, T7	T5, T8	T6, T9

TOLERANCES UNLESS SPECIFIED

DEC.	INCHES
.X	±.1
.XX	±.01
.XXX	±.005
.XXXX	±.0005
ANG	±1/2'



ELECTRIC MOTORS
GEARMOTORS
AND DRIVES

DRAWN MGM 12/3/02

CHK

APPD

SCALE 1=1

REF 00537703

FMF

PREV

TITLE EXTERNAL WIRING DIAGRAM
3 PHASE - DUAL VOLTAGE - W/TERM BLOCK

MAT'L. IEC/NEMA MARKINGS

FINISH THERMAL TRANSFER

NO.	REVISION	BY & DATE	CHK
01	NEMA LV CONNECTION WAS INCORRECT	RLW 8/4/03	

THIS DRAWING IN DESIGN AND DETAIL IS OUR PROPERTY AND MUST NOT BE USED EXCEPT IN CONNECTION WITH OUR WORK ALL RIGHTS OF DESIGN AND INVENTION ARE RESERVED THIS IS AN ELECTRONICALLY GENERATED DOCUMENT - DO NOT SCALE THIS PRINT

RFP
DIST

CAD FILE 00546501

SIZE A
DRAWING NO. 005465-01
REV. 01



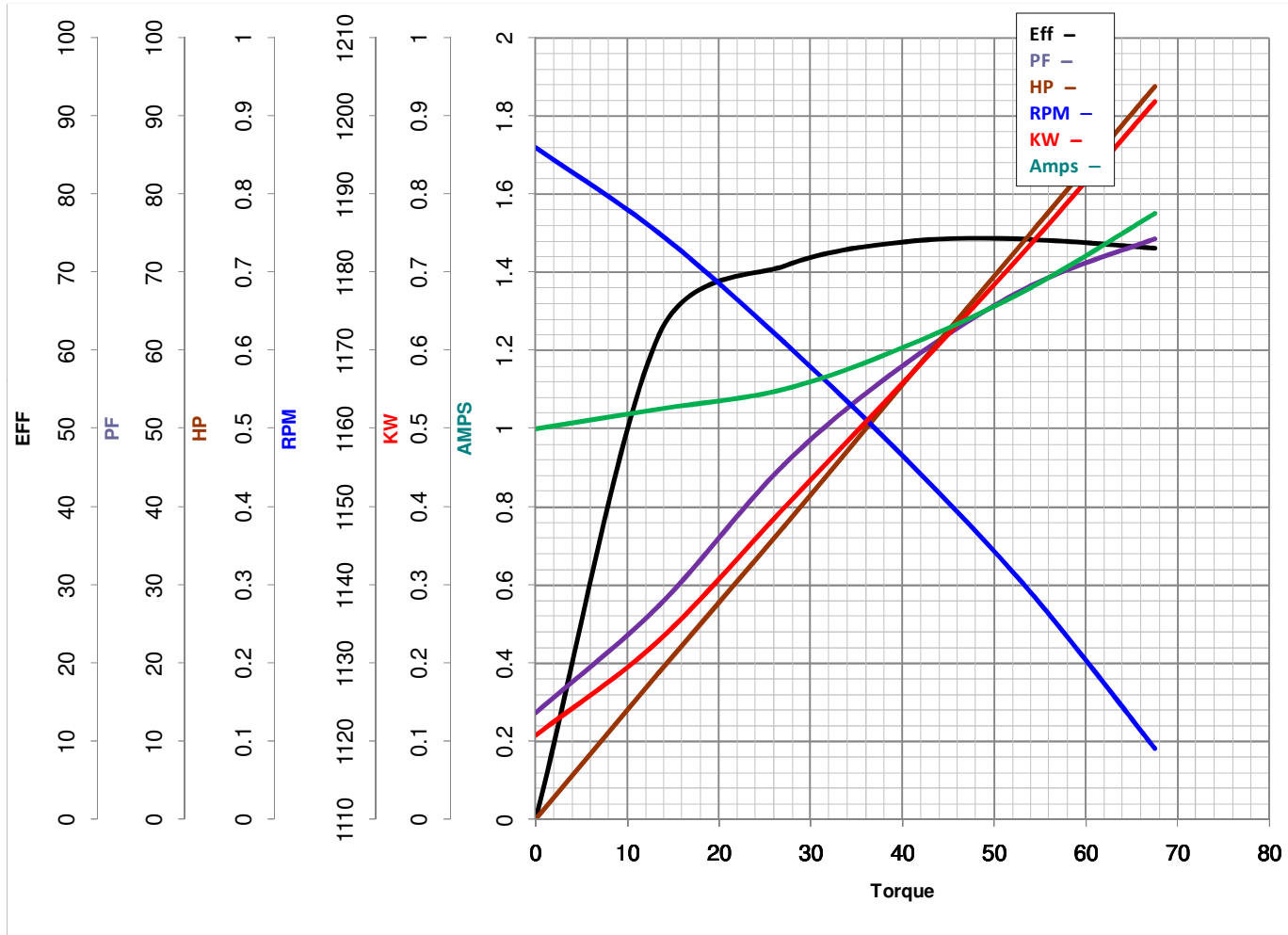
LEESON ELECTRIC CORPORATION
 TYPICAL PERFORMANCE CURVE for AC MOTOR

Model No 192042.00

Catalog No 192042.00

Curve at 460 Volts HP 0.75&0.75 PHASE 3
60 HZ
0.75 HP VOLTS 230/460&200/400

HZ 60&50 RPM 1130&910



Torque in Oz.Ft

FL TORQUE 54 Oz.Ft
 BD TORQUE 150.0 Oz.Ft
 LR TORQUE 115 Oz.Ft

FL AMPS 2.7/1.35
 PU TORQUE 104.0 Oz.Ft
 LR AMPS 6.2

WINDING QT8063-3

Date 6/5/2018