

PRODUCT INFORMATION PACKET



Model No: M1110014.00
Catalog No: M1110014.00
1/25HP.3500RPM.25.TENV.90V.CONT.40C.1.3SF.SQ. FLANGE.DC SUB-FHP.980.533E
Sub-Fractional Motors



Regal and Leeson are trademarks of Regal Rexnord Corporation or one of its affiliated companies.
©2021 Regal Rexnord Corporation, All Rights Reserved. MC017097E





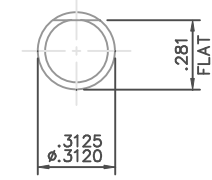
Nameplate Specifications

Output HP	0.04 Hp	Output KW	0.03 kW
Voltage	90 V	Current	0.56 A
Speed	3500 rpm	Service Factor	1.3
Efficiency	59.5 %	Duty	Continuous
Insulation Class	F	Frame	25
Enclosure	Totally Enclosed Non Ventiladed	Thermal Protection	No
Ambient Temperature	40 °C	Drive End Bearing Size	608-S
Opp Drive End Bearing Size	608-S	UL	Recognized
CSA	Y	CE	Y

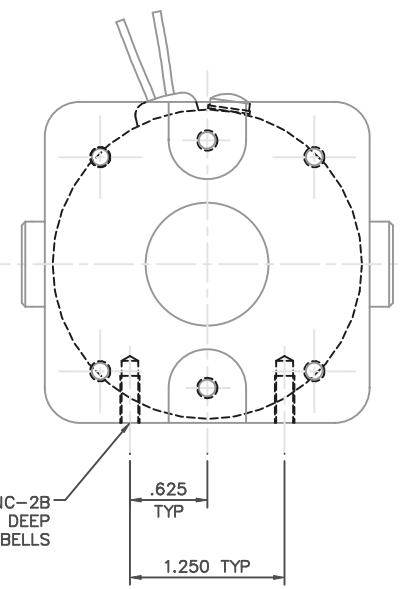
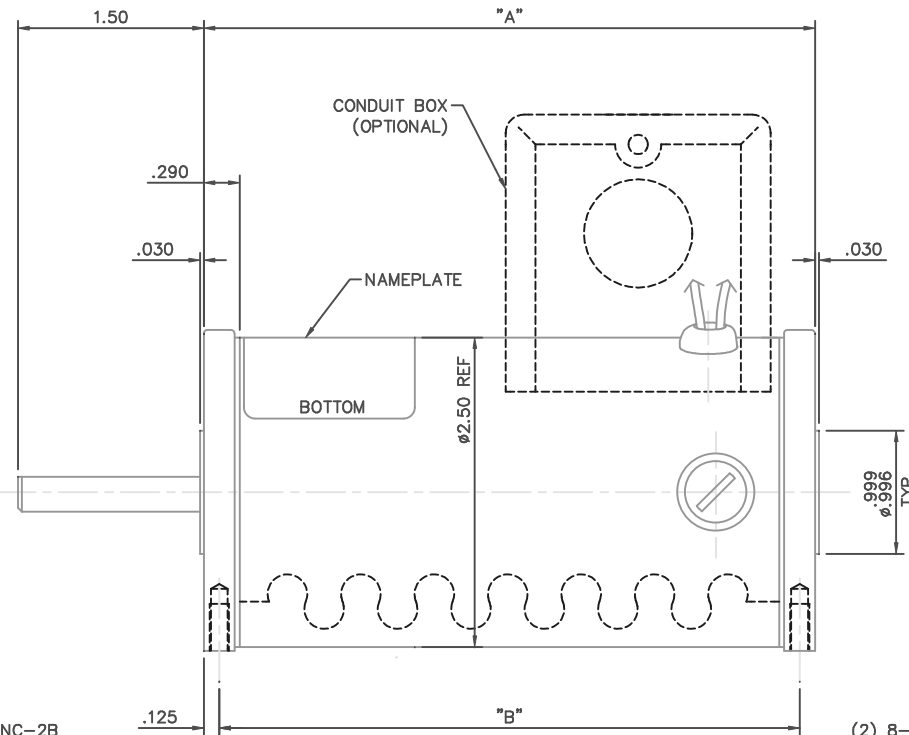
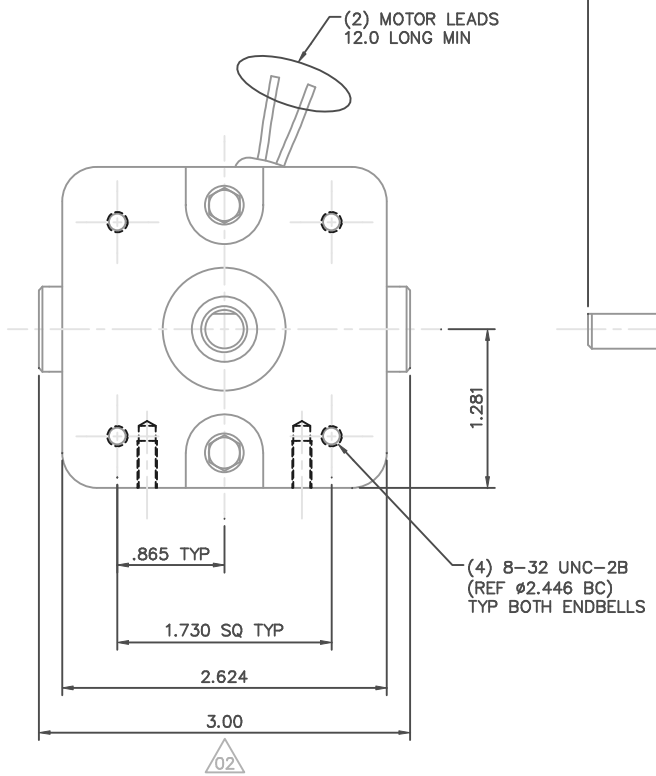
Technical Specifications

Rotation	Reversible	Mounting	Round
Overall Length	5.58 in	Frame Length	3.50 in
Shaft Diameter	0.312 in	Shaft Extension	1.5 in
Torque	11.5 OZ-IN		
Outline Drawing	M1030888-M1110014	Connection Drawing	M100526101

This is an uncontrolled document once printed or downloaded and is subject to change without notice. Date Created:10/11/2021



SHAFT DETAIL (2X)

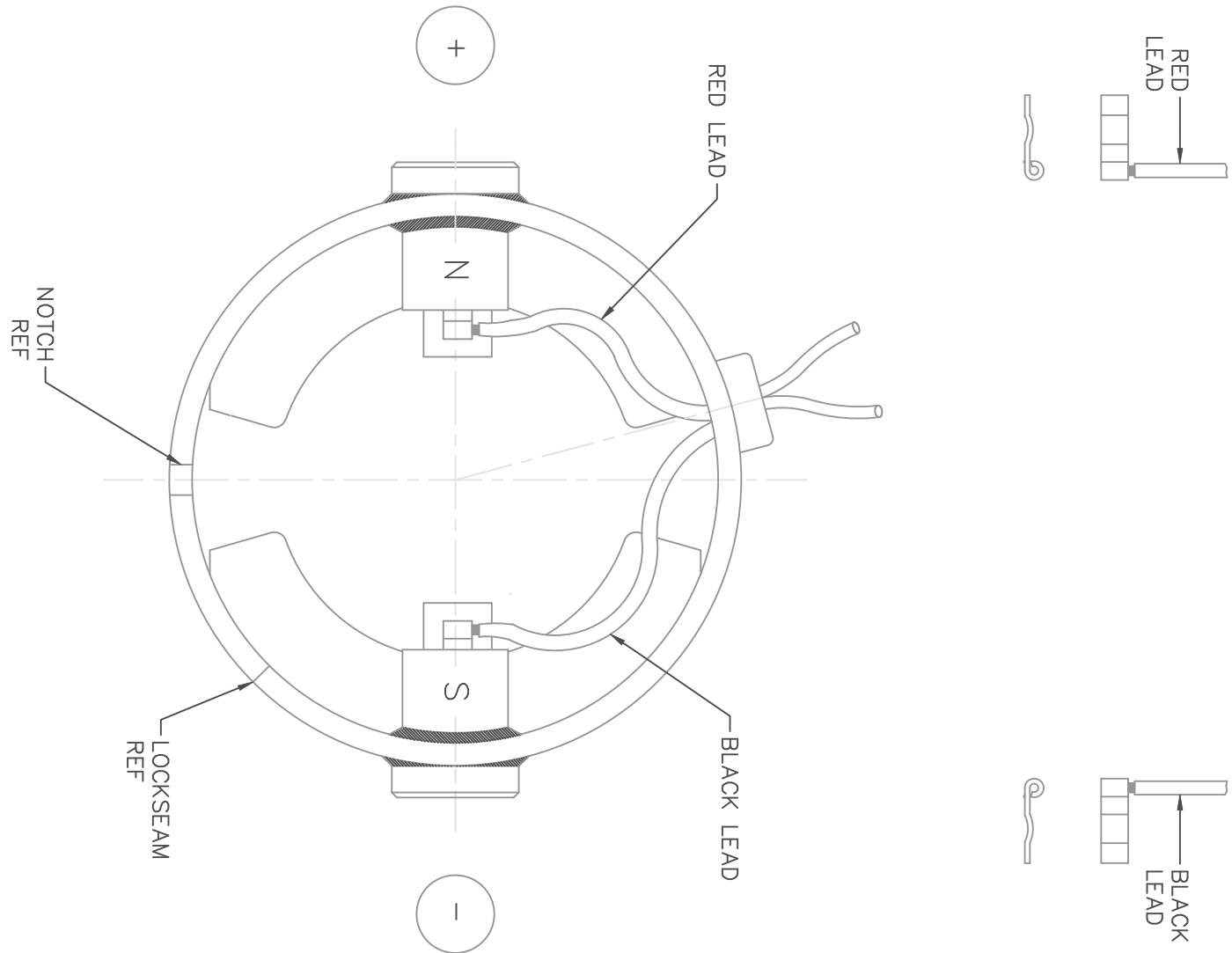


NOTES:
1) ENDBELL MOUNTING FEET TO BE PARALLEL WITHIN .002 OF EACH OTHER.


CAT. NO.	"A"	"B"	VOLTS	H.P.	RPM
M1110003.00	4.94	4.69	90	1/25	1750
M1110006.00	4.94	4.69	12-24	1/20-1/10	1750-4200
M1110014.00	4.08	3.83	90	1/25	3500
M1110015.00	4.94	4.69	90	1/15	3500

		TOLERANCES UNLESS SPECIFIED		LEESON ELECTRIC MOTORS GEARMOTORS AND DRIVES		DRAWN SAD 7/15/03	
		DEC.	INCHES			CHK	IPG 7/16/03
		.X	±.1	TITLE		APPD	SCALE 1=1
		.XX	±.03	OUTLINE		REF	PR020584
		.XXX	±.005	25 FRAME DC		FMF	M1110014.00
		.XXX	±.0005	MAT'L		PREV	
NO.	REVISION	BY & DATE	CHK	ANG	±1/2"	FINISH	
02	ADDED 3.00 DIM TO BRUSHES, ECR 82273	IPG 1/26/2004	SAD	.XXX	±.005		
01	ADDED TABLE PER 25 FRAME CONVERSION	IPG 8/18/03	SAD	.XXX	±.0005		
THIS DRAWING IN DESIGN AND DETAIL IS OUR PROPERTY AND MUST NOT BE USED EXCEPT IN CONNECTION WITH OUR WORK ALL RIGHTS OF DESIGN AND INVENTION ARE RESERVED THIS IS AN ELECTRONICALLY GENERATED DOCUMENT - DO NOT SCALE THIS PRINT		RFP		CAD FILE	M1030888	SIZE	DRAWING NO.
		DIST				B	M1030888.00
							REV. 02

DC MOTORS



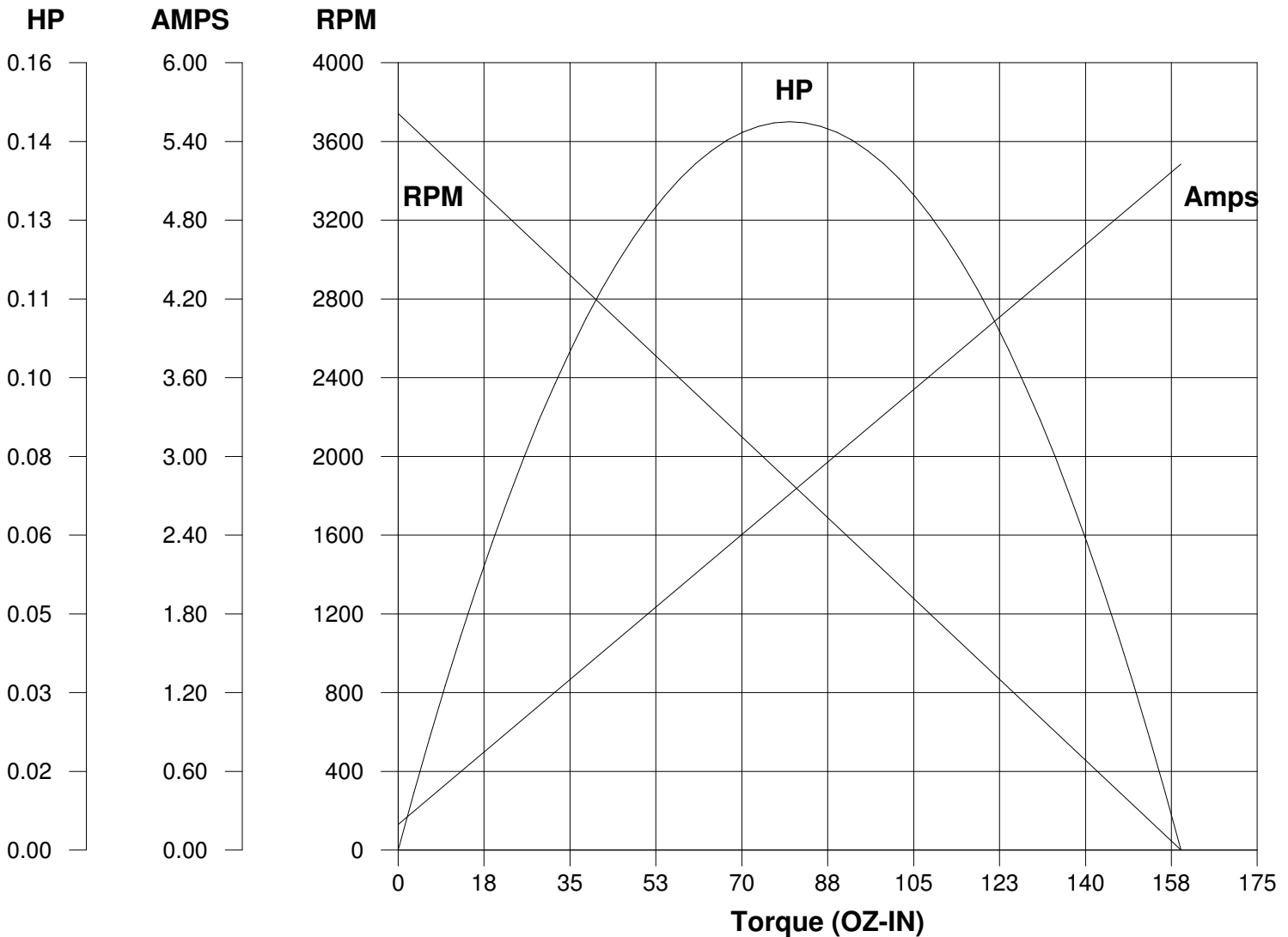
EXTERNAL CONNECTIONS FOR CW ROTATION VIEWING
 LEAD END OF MOTOR WITH RED LEAD POSITIVE (+)
 AND BLACK LEAD NEGATIVE (-)
 FOR CW ROTATION REVERSE POLARITY

			TOLERANCES UNLESS SPECIFIED		 ELECTRIC MOTORS GEARMOTORS AND DRIVES	DRAWN SAD 06/20/03 CHK IPG 06/20/03 APPD
			DEC.	INCHES		SCALE 1=1
02	CORRECTED "N" & "S", ADDED TRU-TORQ TO THE TITLE	IPG 3/1/2004	SAD	.X	±.1	REF PR020584
	BLOCK AND ORACLE DESCRIPTION, ECR 83989			.XXX	±.005	FMF M110014.00
01	CORRECTED "N" & "S", ECR 83508	SMB 01/21/04	IPG	.XXXX	±.0005	PREV
NO.	REVISION	BY & DATE	CHK	ANG	±1/2'	
THIS DRAWING IN DESIGN AND DETAIL IS OUR PROPERTY AND MUST NOT BE USED EXCEPT IN CONNECTION WITH OUR WORK ALL RIGHTS OF DESIGN AND INVENTION ARE RESERVED THIS IS AN ELECTRONICALLY GENERATED DOCUMENT - DO NOT SCALE THIS PRINT			RFP	CAD FILE M100526101		SIZE A DRAWING NO. M1005261.01
			DIST			REV. 02

LEESON ELECTRIC CORPORATION

TYPICAL PERFORMANCE CURVE FOR DIRECT CURRENT PERMANENT MAGNET MOTOR

Model No. <u>980.533</u>	Catalog No. <u>M1110014.00</u>	
HP <u>0.040</u>	RPM <u>3500</u>	DC Volts <u>90.0</u>
F.F. <u>1.38</u>	Encl <u>TENV</u>	N.P. FLA <u>0.56</u>
Max. Amb. <u>40.0 Deg C</u>	Insul. <u>F</u>	Type <u>DN</u>
		Frame <u>25</u>
		S.F. <u>1.00</u>
		Duty <u>Cont</u>



Ra 15.800 Ohms
La 25.00 mHenrys
Ja 0.0300 LB-IN²
Ke 23.22 V/KRPM

Kt 31.41 OZ-IN/AMP
Imax 8.5 AMPS Allowed
FL Torque 11.50 OZ-IN
FL EFF 59.50 %

Winding W- MD25229-1 **Prepared by** V. Boehlen **Date** 05-09-2005