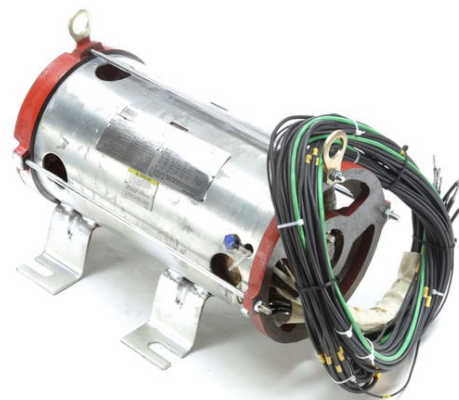


PRODUCT INFORMATION PACKET



Model No: LM29670
Catalog No: LM29670

Elevator Duty Motor, 40 & 30 HP, 3 Ph, 60 & 60 Hz, 575 & 575 V, 3600 & 3600 RPM, 160TZ Frame, OPEN



Regal and Leeson are trademarks of Regal Rexnord Corporation or one of its affiliated companies.
©2023 Regal Rexnord Corporation, All Rights Reserved. MC017097E



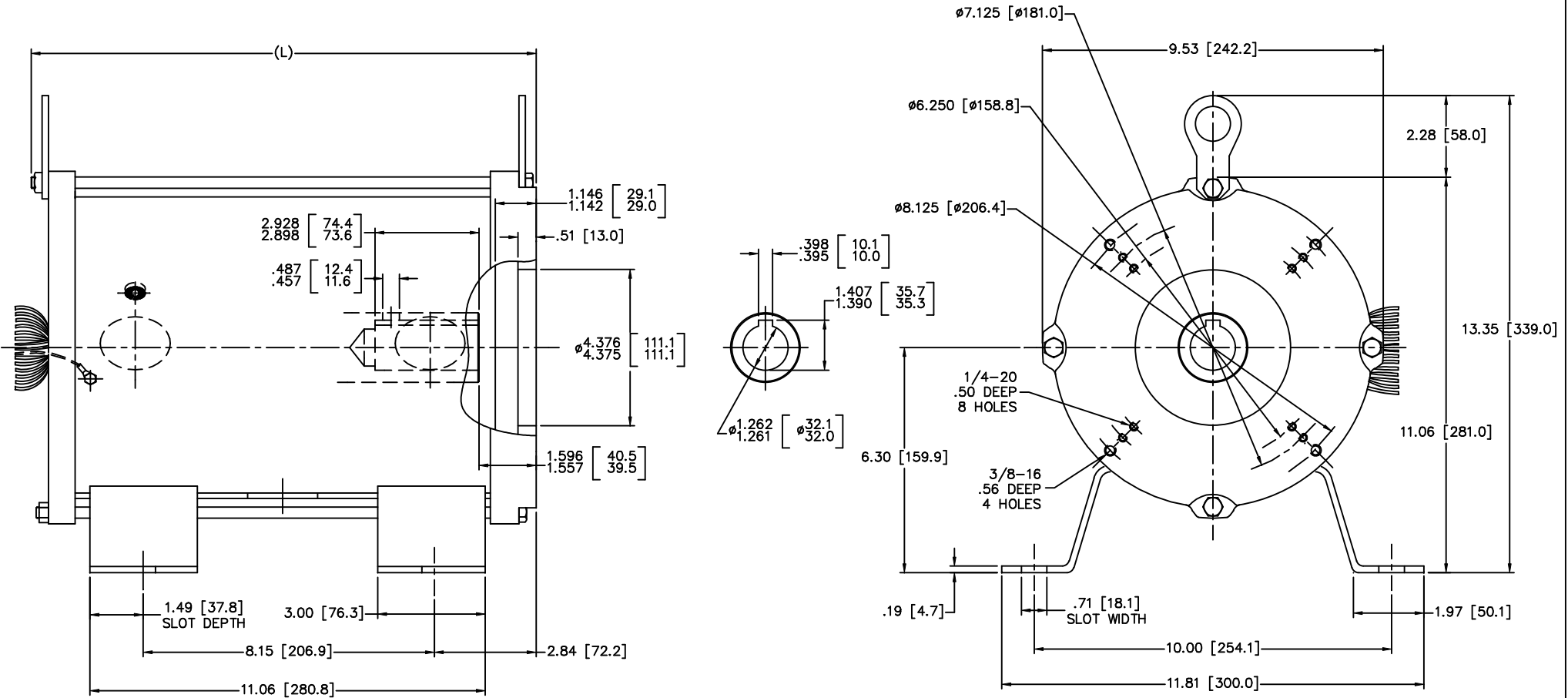


Nameplate Specifications

Phase	3	Output HP	40 & 30 Hp
Output KW	30.0 & 22.4 kW	Voltage	575 & 575 V
Speed	3520 & 3540 rpm	Service Factor	1.0
Frame	160TZ	Enclosure	Open Enclosed
Thermal Protection	Thermostat	Efficiency	88.5 & 88.5 %
Ambient Temperature	70 °C	Frequency	60 & 60 Hz
Current	38.5 & 29.6 A	Power Factor	88.4
Duty	120/80 Starts/Hour	Insulation Class	F
Design Code	B	KVA Code	G
Drive End Bearing Size	6307	Opp Drive End Bearing Size	6307
UL	Recognized	CSA	Y
CE	N	IP Code	10
Number of Speeds	1		

Technical Specifications

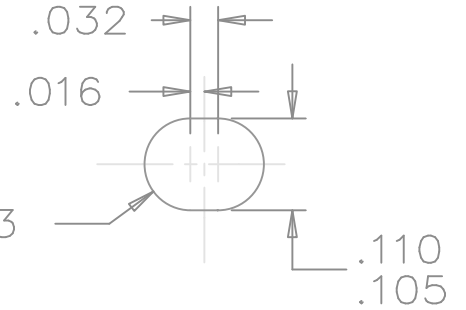
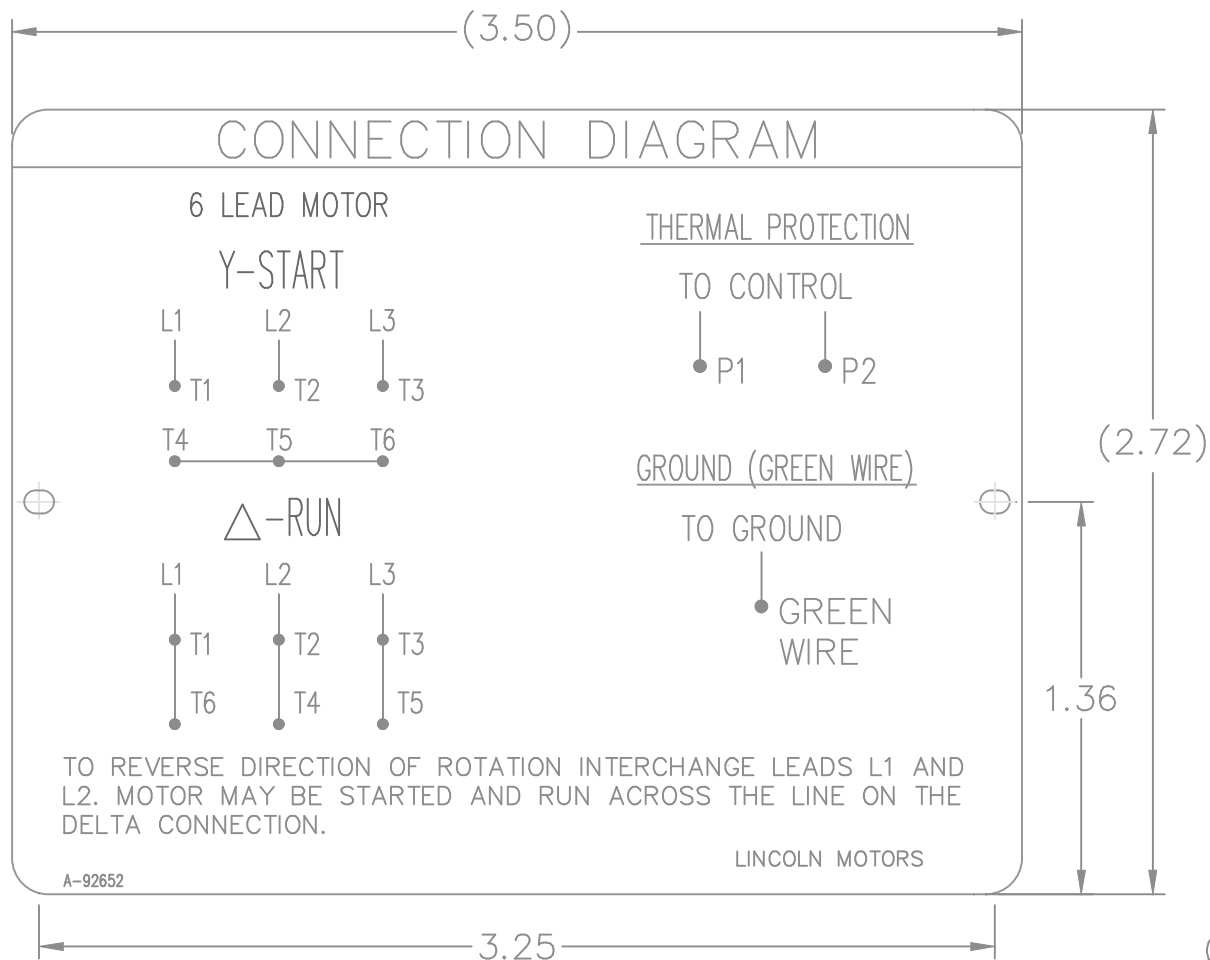
Electrical Type	Squirrel Cage Induction Run	Starting Method	Wye Start Delta Run
Poles	2	Rotation	Reversible
Resistance Main	383 Ohms	Mounting	Rigid Base
Motor Orientation	Horizontal	Drive End Bearing	Ball
Opp Drive End Bearing	Ball	Frame Material	Rolled Steel
Shaft Type	Single Special Extension	Overall Length	14.53 in
Frame Length	15.35 in	Shaft Diameter	1.250 in
Shaft Extension	2.92 in	Assembly/Box Mounting	F1/F2 CAPABLE
Connection Drawing	92652	Outline Drawing	0216000039



TYPE	HP	L
160ZBS-2	15	14.53 [369.0]
160ZBS-2	20	
160ZBS-2	25	
160ZBS-2	30	
160ZBS-2	40	17.87 [454.0]
160ZBS-2	50	

(MAY NOT BE DRAWN TO SCALE)

		TOLERANCES UNLESS SPECIFIED		Lincoln MOTOR		DRAWN MSG 01-25-2007	
		DEC.	INCHES	CHK	ML 01-25-2007	APPD GK 01-25-2007	
		.X	±.1	TITLE OUTLINE - SUBMERSIBLE ELEVATOR PUMP		SCALE 3-8	
		.XX	±.03	160ZBS FR. - 3 PHASE - DUAL DIMENSIONS		REF	
		.XXX	±.005	MAT'L		FMF HEBEI	
1 UPDATED TO CURRENT STANDARDS		DRS	±.0005	PREV			
NO.	REVISION	BY & DATE	CHK	ANG	FINISH	SIZE	DRAWING NO. PAGE OF REV.
			RFP	±7'30"		B	0216000039 1
THIS DRAWING IN DESIGN AND DETAIL IS OUR PROPERTY AND MUST NOT BE USED EXCEPT IN CONNECTION WITH OUR WORK ALL RIGHTS OF DESIGN AND INVENTION ARE RESERVED THIS IS AN ELECTRONICALLY GENERATED DOCUMENT - DO NOT SCALE THIS PRINT						CAD FILE 0216000039	
						DIST	



NOTES:

1. MATERIAL 304 STAINLESS STEEL
2. LETTERING AND ARTWORK BLACK
3. ALL DATA MUST BE HYDRAULIC OIL RESISTANT.

				TOLERANCES UNLESS SPECIFIED			DRAWN CTO 02-18-2004					
				DEC.	INCHES		CHK ML 02-18-2004					
				.X	±.1		APPD MS 02-18-2004					
				.XX	±.02		SCALE 1.5=1					
				.XXX	±.005		REF					
				.XXX	±.005	TITLE CONNECTION DIAGRAM PLATE						
				.XXXX	±.0005	MAT'L. 304 STAINLESS STEEL						
				ANG	±7'30"	FINISH						
NO.	REVISION	BY & DATE	CHK	ANG	±7'30"	PREV						
THIS DRAWING IN DESIGN AND DETAIL IS OUR PROPERTY AND MUST NOT BE USED EXCEPT IN CONNECTION WITH OUR WORK ALL RIGHTS OF DESIGN AND INVENTION ARE RESERVED THIS IS AN ELECTRONICALLY GENERATED DOCUMENT - DO NOT SCALE THIS PRINT				RFP	02-18-2004	CAD FILE 92652		SIZE	DRAWING NO.	PAGE	OF	REV.
				DIST	WA			A	92652			



CERTIFICATION DATA SHEET

2100 WASHINGTON ST.
GRAFTON, WI
PH. 262-277-8810

CONN. DIAGRAM: A-92652

MODEL #: LM29670

OUTLINE: 0216000039

WINDING #: 2152208 2

MOUNTING: F1/F2 CAPABLE

TYPICAL MOTOR PERFORMANCE DATA

HP	kW	SYNC. RPM	F.L. RPM	FRAME	ENCLOSURE	KVA CODE	DESIGN
40	30.0	3600	3520	160Z	OPEN	G	NO DESIGN CODE

PH	Hz	VOLTS	AMPS	START TYPE	DUTY	INSL	S.F.	AMB°C
3	60	575	40	WYE START DELTA RUN	30 MINUTE	F7	1.0	70

FULL LOAD EFF:	84	3/4 LOAD EFF:	90.2	1/2 LOAD EFF:	90.2	GTD. EFF	ELEC. TYPE
FULL LOAD PF:	90	3/4 LOAD PF:	80.5	1/2 LOAD PF:	70	81.5	SQ CAGE IND RUN

F.L. TORQUE	LOCKED ROTOR AMPS	L.R. TORQUE	B.D. TORQUE	F.L. RISE°C
60 LB-FT	300	125 LB-FT 208 %	175 LB-FT 292 %	0

SOUND PRESSURE @ 3 FT.	SOUND POWER	ROTOR WK^2	MAX. WK^2	SAFE STALL TIME	STARTS / HOUR	APPROX. MOTOR WGT
- dBA	- dBA	0 LB-FT^2	- LB-FT^2	- SEC.	80	0 LBS.

*** SUPPLEMENTAL INFORMATION ***

DE BRACKET TYPE	ODE BRACKET TYPE	MOUNT TYPE	ORIENTATION	SEVERE DUTY	HAZARDOUS LOCATION	DRIP COVER	SCREENS	PAINT
STANDARD	STANDARD	RIGID	HORIZONTAL	FALSE	NONE	FALSE	NONE	GRAY - LINCOLN

BEARINGS		GREASE	SHAFT TYPE	SPECIAL DE	SPECIAL ODE	SHAFT MATERIAL	FRAME MATERIAL
DE	ODE						
BALL	BALL	POLYREX EM	SGL SPL EXT	Y - ELEVATOR MOTOR SHAFT	NONE	AISI 1045 (C-240)	ROLLED STEEL
6307	6307						

THERMO-PROTECTORS				THERMISTORS	CONTROL	SPACE HEATERS
THERMOSTATS	PROTECTORS	WDG RTDs	BRG RTDs			
TSTATS (N/C)	NOT	NONE	NONE	NONE	FALSE	NONE VOLTS

*
N
O
T
E
S
*

INVERTER TORQUE: NONE
INV. HP SPEED RANGE: NONE
ENCODER: NONE
NONE NONE
NONE NONE PPR
BRAKE: NONE NONE
NONE P/N NONE
NONE NONE
NONE FT-LB NONE V NONE Hz

Data Sheet

Date: 1/23/2018

LM29670



Data @ 575 V

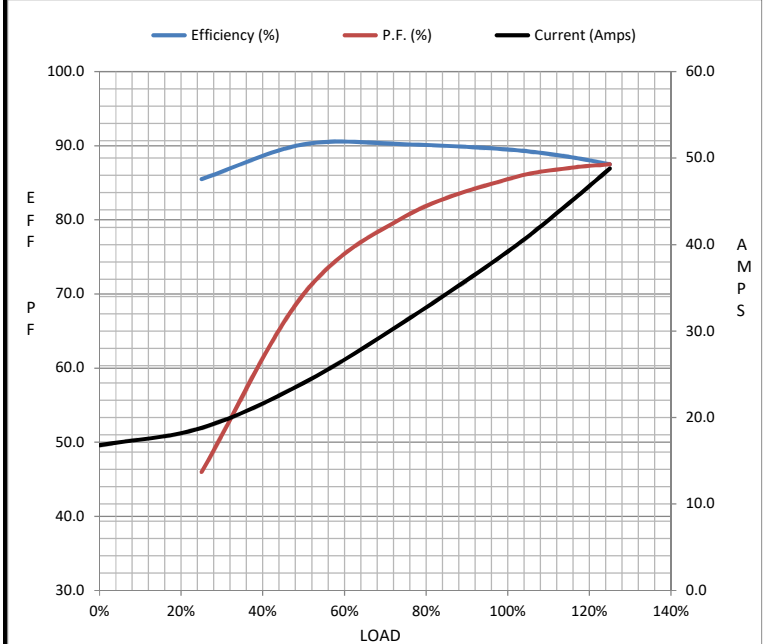
Motor Load Data

Load	0%	25%	50%	75%	100%	115%	125%	LR
Current (Amps)	16.8	18.8	24.0	31.2	39.2	44.8	48.8	300
Torque (ft-lb)	0.00	14.5	29.5	44.5	60.0	69.0	75.0	125
RPM	3600	3580	3560	3540	3520	3,500	3495	0
Efficiency (%)		85.5	90.2	90.2	89.5	88.5	87.5	
P.F. (%)	6.5	46.0	70.0	80.5	85.5	87.0	87.5	50.0

Motor Speed Data

	LR	Pull-Up	BD	Rated	Idle
Speed (RPM)	0	1800	2950	3520	3600
Current (Amps)	300	272	200	39.2	16.8
Torque (ft-lb)	125	115	175	60.0	0.00

Information Block				
HP	40.0			
Sync. RPM	3600			
Frame	160			
Enclosure	OPEN			
Construction	TDR			
Voltage	575 V			
Frequency	60 Hz			
Design	A			
LR Code letter	G			
Service Factor	1.15			
Temp Rise @ FL	0 °C			
Duty	30 MIN			
Ambient	40 °C			
Elevation	1,000 feet			
Rotor/Shaft wk ²	0.00 Lb-Ft ²			
Ref Wdg	2152208 NONE			
Sound Pressure @ 1M	999 dBA			
VFD Rating	NONE			
Outline Dwg	0216000039			
Conn. Diag	A-92652			
Additional Specifications:				
0				
0				
EQUIV CKT (OHMS / PHASE)				
R1	R2	X1	X2	Xm
0.0000	0.0000	0.0000	0.0000	0.0000



Speed - Torque Curve

