

# PRODUCT INFORMATION PACKET



Model No: 120008.00

Catalog No: 120008.00

General Purpose Motor, 1 HP, 1 Ph, 60 Hz, 115/208-230 V, 1800 RPM, 143T Frame, TEFC



Regal and Leeson are trademarks of Regal Rexnord Corporation or one of its affiliated companies.

©2022 Regal Rexnord Corporation, All Rights Reserved. MC017097E



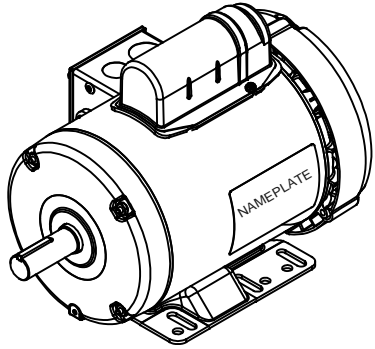
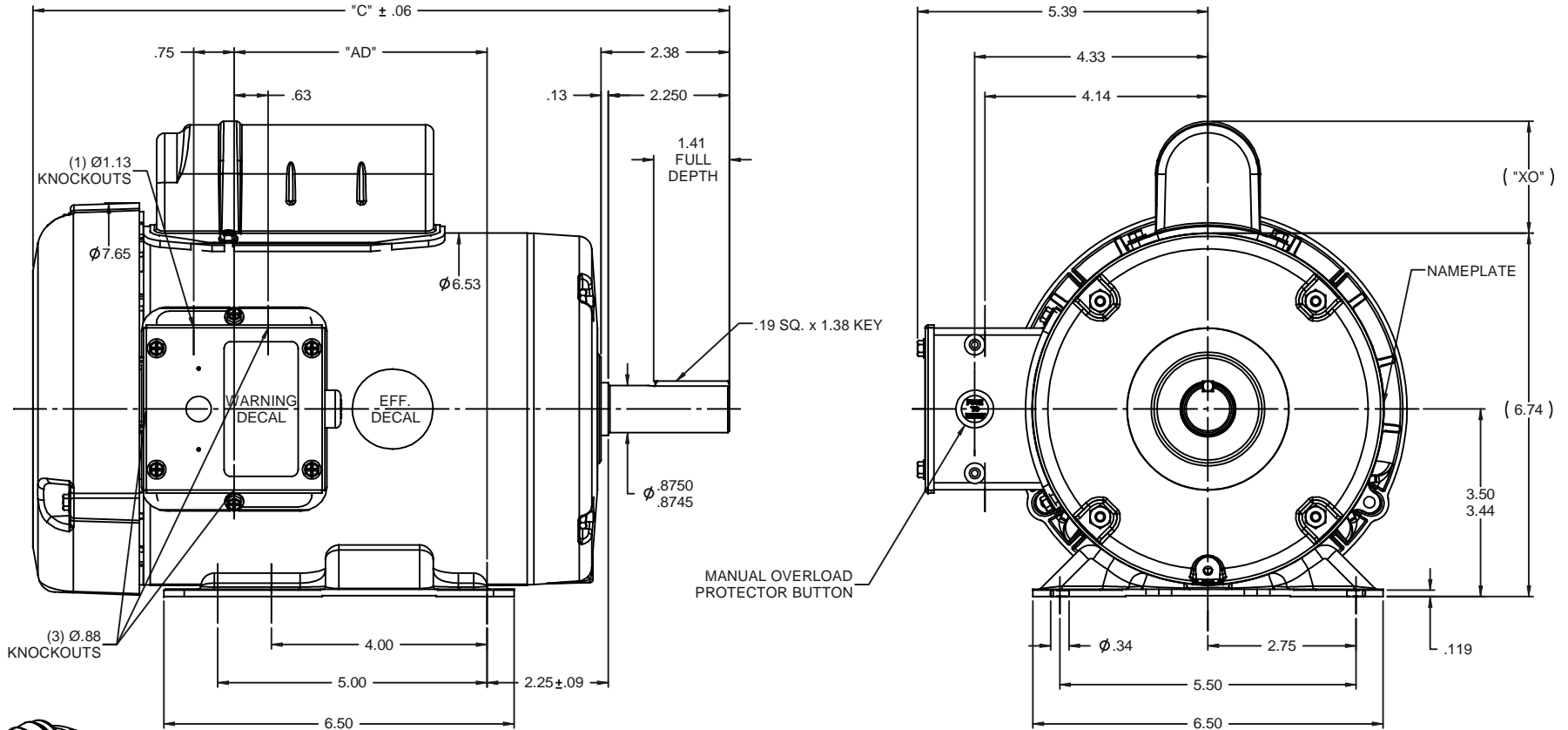


### Nameplate Specifications

|                        |            |                            |                             |
|------------------------|------------|----------------------------|-----------------------------|
| Output HP              | 1 Hp       | Output KW                  | 0.75 kW                     |
| Frequency              | 60 Hz      | Voltage                    | 115/208-230 V               |
| Current                | 12.8/6.4 A | Speed                      | 1740 rpm                    |
| Service Factor         | 1.15       | Phase                      | 1                           |
| Efficiency             | 75 %       | Power Factor               | 68                          |
| Duty                   | Continuous | Insulation Class           | B                           |
| Design Code            | N          | KVA Code                   | K                           |
| Frame                  | 143T       | Enclosure                  | Totally Enclosed Fan Cooled |
| Thermal Protection     | Manual     | Ambient Temperature        | 40 °C                       |
| Drive End Bearing Size | 6205       | Opp Drive End Bearing Size | 6203                        |
| UL                     | Recognized | CSA                        | Y                           |
| CE                     | N          | IP Code                    | 43                          |
| Number of Speeds       | 1          |                            |                             |

### Technical Specifications

|                       |                               |                       |                            |
|-----------------------|-------------------------------|-----------------------|----------------------------|
| Electrical Type       | Capacitor Start Induction Run | Starting Method       | Across The Line            |
| Poles                 | 4                             | Rotation              | Selective Counterclockwise |
| Resistance Main       | 1.9 Ohms                      | Mounting              | Rigid Base                 |
| Motor Orientation     | Horizontal                    | Drive End Bearing     | Ball                       |
| Opp Drive End Bearing | Ball                          | Frame Material        | Rolled Steel               |
| Shaft Type            | T                             | Overall Length        | 12.93 in                   |
| Frame Length          | 7.00 in                       | Shaft Diameter        | 0.875 in                   |
| Shaft Extension       | 2.25 in                       | Assembly/Box Mounting | F1 ONLY                    |
| Outline Drawing       | 028904-700B                   | Connection Drawing    | 005003.03                  |



| DASH NO. | "C"   | "AD" | CAP. DASH | "XO" |
|----------|-------|------|-----------|------|
| 700      | 12.93 | 4.69 | A         | 1.54 |
| 750      | 13.43 | 5.19 | B         | 2.01 |
| 800      | 13.93 | 5.69 | C         | 2.25 |
| 850      | 14.43 | 6.19 |           |      |

NOTE:  
1) GASKETS THROUGHOUT

| REVISION               |  | BY & DATE | CHK               | ANG      | ±1/2" | FINISH | PAGE 1 OF 1 |            |
|------------------------|--|-----------|-------------------|----------|-------|--------|-------------|------------|
| THIRD ANGLE PROJECTION |  |           | RFP               | 11/26/08 | PREV  |        | SIZE        | DRAWING NO |
|                        |  |           | NETWORK FILE NAME |          |       |        | B           | 028904     |
|                        |  |           |                   |          |       |        |             | REV        |



**ELECTRIC MOTORS  
GEARMOTORS  
AND DRIVES**

DRAWN GRB 11/26/08

CHK DJ 11/26/08

APPR DJ 11/26/08

TITLE OUTLINE - 140 FRAME

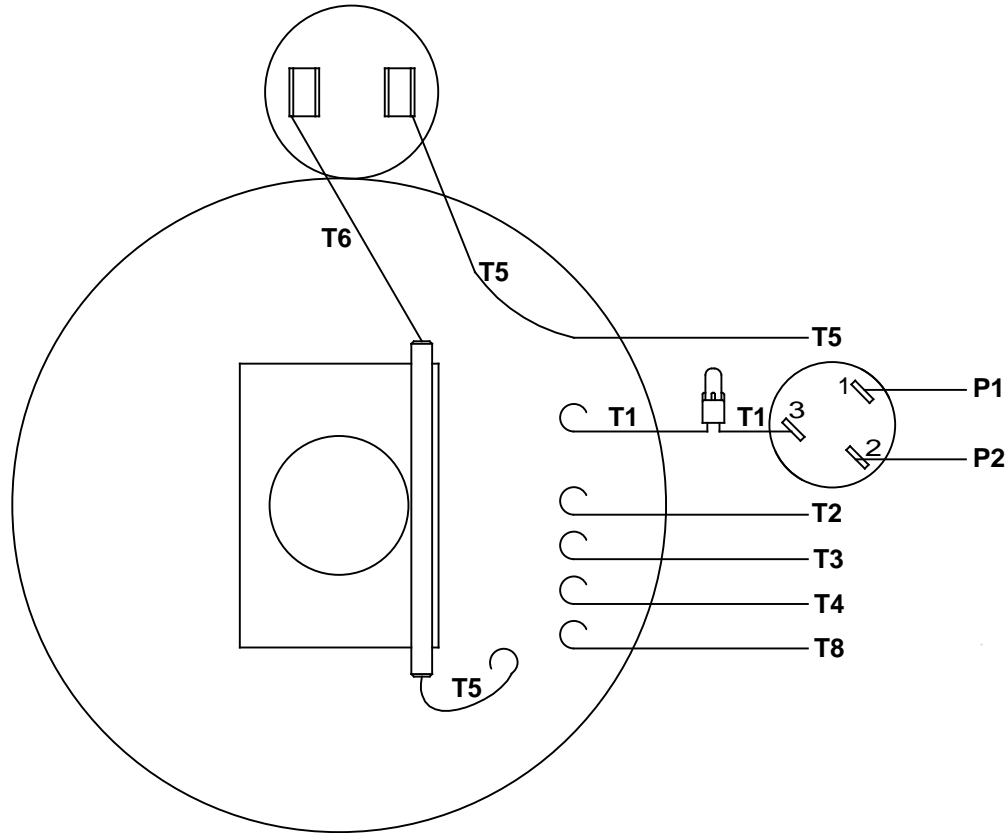
REF 033100

MATL

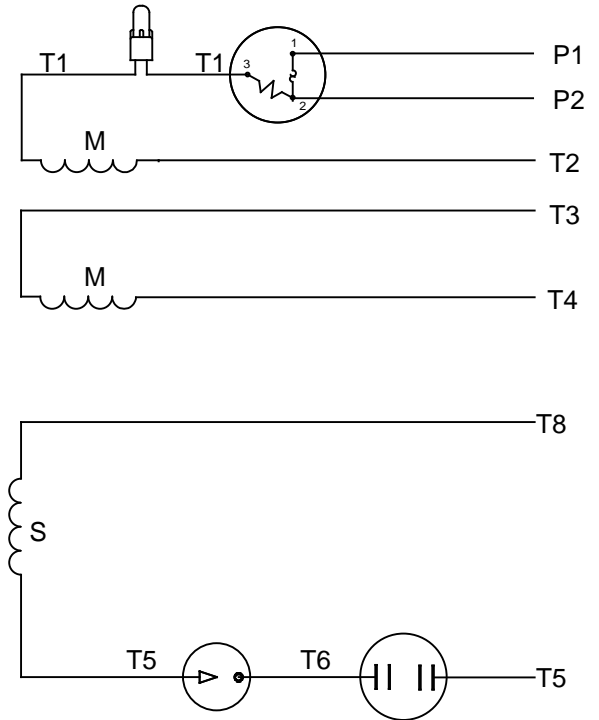
SCALE 1:2

FMF 120008.00

# VIEW FROM OUTSIDE OF MOTOR AT SWITCH END



# LINE LEADS



RBC PROPRIETARY AND CONFIDENTIAL INFORMATION  
 This document is the property of REGAL BELOIT CORPORATION ("RBC") including its subsidiaries and divisions and contains proprietary information of RBC. This document is loaned on the express condition that neither it nor the information contained therein shall be disclosed to others without the express written consent of RBC, and that the information shall be used by the recipient only as approved expressly by RBC. This document shall be returned to RBC upon its request. This document may be subject to certain restrictions under U.S. export control laws and regulations.

|           | ROTATION FACING LEAD END | L1 | L2          | JOIN        | INSULATE SEPARATELY |
|-----------|--------------------------|----|-------------|-------------|---------------------|
| HIGH VOLT | C.C.W.                   | P1 | T4<br>T5    | T2,T3<br>T8 | P2                  |
|           | C.W.                     | P1 | T4<br>T8    | T2,T3<br>T5 | P2                  |
| LOW VOLT  | C.C.W.                   | P1 | T2,T4<br>T5 | P2,T3<br>T8 | ---                 |
|           | C.W.                     | P1 | T2,T4<br>T8 | P2,T3<br>T5 | ---                 |

|    |                       | TOLERANCES UNLESS SPECIFIED |           | LEESON            | ELECTRIC MOTORS<br>GEARMOTORS<br>AND DRIVES | DRAWN |   |
|----|-----------------------|-----------------------------|-----------|-------------------|---|-------|---|
| NO | REVISION              | DEC                         | INCHES    |                   |   | WLV   | 08/20/79  |
|    |                       | .X                          | ±.1       |                   |   | CHK   | ADN 08/27/76                                    |
|    |                       | .XX                         | ±.01      |                   |   | APPR  | WRK 08/27/76                                    |
| 06 | REDRAWN IN SOLIDWORKS | VJB                         | 7/22/2011 | .XXX              | ±.005                                       | TITLE | EXTERNAL WIRING DIAGRAM<br>TYPE "C" W/PROTECTOR |
| 05 | REDRAWN ON CAD        | DBT                         | 05/27/97  | .XXXX             | ±.0005                                      | MAT'L | DECAL - 004011                                  |
|    |                       |                             |           | CHK               | ANG   | ±1/2° | FINISH  |
|    |                       |                             |           | RFP               | PREV  | SIZE  | DRAWING NO                                      |
|    |                       |                             |           | NETWORK FILE NAME | 00500303                                    | A     | 005003-03                                       |
|    |                       |                             |           |                   |   |       | REV   |
|    |                       |                             |           |                   |   |       | 06  |





**CERTIFICATION DATA SHEET**

**1051 CHEYENNE AVE.  
GRAFTON, WI 53024  
PH. 262-377-8810**

**CATALOG #:** 120008.00

**CONN. DIAGRAM:** 005003.03

**OUTLINE:** 028904-700B

**MOUNTING:** F1 ONLY

**WINDING #:** C634256 FR 3 B

**TYPICAL MOTOR PERFORMANCE DATA**

| HP | kW   | SYNC. RPM | F.L. RPM | FRAME | ENCLOSURE | KVA CODE | DESIGN |
|----|------|-----------|----------|-------|-----------|----------|--------|
| 1  | 0.75 | 1800      | 1740     | 143T  | TEFC      | K        | N      |

| PH | Hz | VOLTS       | AMPS     | START TYPE      | DUTY       | INSL | S.F. | AMB°C |
|----|----|-------------|----------|-----------------|------------|------|------|-------|
| 1  | 60 | 115/208-230 | 12.8/6.4 | ACROSS THE LINE | CONTINUOUS | B4   | 1.15 | 40    |

| FULL LOAD EFF: | 75 | 3/4 LOAD EFF: | 72.8 | 1/2 LOAD EFF: | 69.7 | GTD. EFF |                   | ELEC. TYPE |  |
|----------------|----|---------------|------|---------------|------|----------|-------------------|------------|--|
| FULL LOAD PF:  | 68 | 3/4 LOAD PF:  | 58   | 1/2 LOAD PF:  | 45.6 | 70       | CAP START IND RUN |            |  |

| F.L. TORQUE | LOCKED ROTOR AMPS | L.R. TORQUE   | B.D. TORQUE   | F.L. RISE°C |
|-------------|-------------------|---------------|---------------|-------------|
| 3 LB-FT     | 66 / 33           | 9 LB-FT 300 % | 7 LB-FT 233 % | 73          |

| SOUND PRESSURE @ 3 FT. | SOUND POWER | ROTOR WK^2 | MAX. WK^2   | SAFE STALL TIME | STARTS / HOUR | APPROX. MOTOR WGT |
|------------------------|-------------|------------|-------------|-----------------|---------------|-------------------|
| 64 dBA                 | 74 dBA      | 0 LB-FT^2  | 0.1 LB-FT^2 | 10 SEC.         | 0             | 34 LBS.           |

**\*\*\* SUPPLEMENTAL INFORMATION \*\*\***

| DE BRACKET TYPE | ODE BRACKET TYPE | MOUNT TYPE | ORIENTATION | SEVERE DUTY | HAZARDOUS LOCATION | DRIP COVER | SCREENS | PAINT                  |
|-----------------|------------------|------------|-------------|-------------|--------------------|------------|---------|------------------------|
| STANDARD        | STANDARD         | RIGID      | HORIZONTAL  | FALSE       | NONE               | FALSE      | NONE    | BLUE - LEESON (ENAMEL) |

| BEARINGS |      | GREASE     | SHAFT TYPE | SPECIAL DE | SPECIAL ODE | SHAFT MATERIAL           | FRAME MATERIAL |
|----------|------|------------|------------|------------|-------------|--------------------------|----------------|
| DE       | ODE  |            |            |            |             |                          |                |
| BALL     | BALL | POLYREX EM | T          | NONE       | NONE        | 1144 STRESSPROOF (C-223) | ROLLED STEEL   |
| 6205     | 6203 |            |            |            |             |                          |                |

| THERMO-PROTECTORS |            |          |          | THERMISTORS | CONTROL | SPACE HEATERS |
|-------------------|------------|----------|----------|-------------|---------|---------------|
| THERMOSTATS       | PROTECTORS | WDG RTDs | BRG RTDs |             |         |               |
| NONE              | MANUAL     | NONE     | NONE     | NONE        | FALSE   | NONE VOLTS    |

\*  
N  
O  
T  
E  
S

|                                  |
|----------------------------------|
| <b>INVERTER TORQUE:</b> NONE     |
| <b>INV. HP SPEED RANGE:</b> NONE |
| <b>ENCODER:</b> NONE             |
| NONE NONE                        |
| NONE NONE PPR                    |
| <b>BRAKE:</b> NONE NONE          |
| NONE P/N NONE                    |
| NONE NONE                        |
| NONE FT-LB NONE V NONE HZ        |

