

PRODUCT INFORMATION PACKET



Model No: 116709.00
Catalog No: 116709.00
Pressure Washer Motor, 5 HP, 1 Ph, 60 Hz, 230 V, 3600 RPM, 56HC Frame, DP



Regal and Leeson are trademarks of Regal Rexnord Corporation or one of its affiliated companies.
©2022 Regal Rexnord Corporation, All Rights Reserved. MC017097E





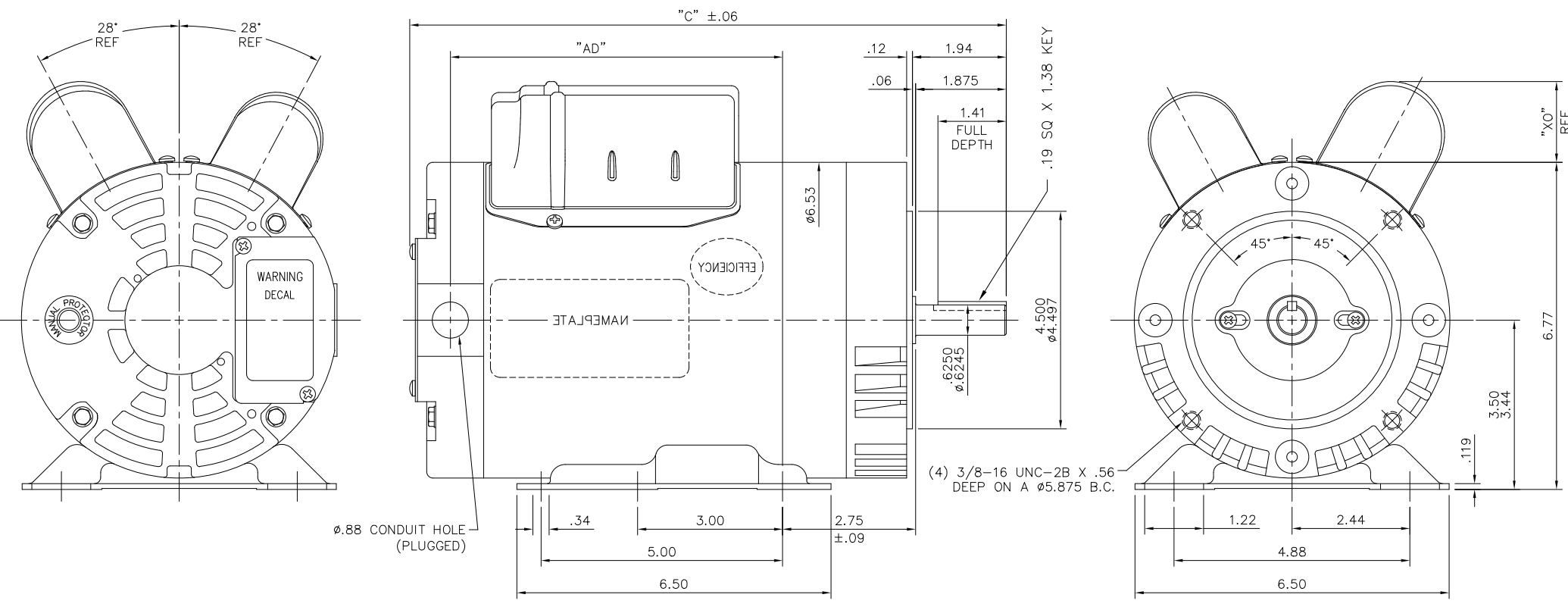
Nameplate Specifications

Output HP	5 Hp	Output KW	3.7 kW
Frequency	60 Hz	Voltage	230 V
Current	20.8 A	Speed	3450 rpm
Service Factor	1	Phase	1
Efficiency	82.5 %	Power Factor	95
Duty	Continuous	Insulation Class	F
Design Code	L	KVA Code	E
Frame	56HC	Enclosure	Drip Proof
Thermal Protection	Manual	Ambient Temperature	40 °C
Drive End Bearing Size	6205	Opp Drive End Bearing Size	6203
UL	Recognized	CSA	Y
CE	N	IP Code	22
Number of Speeds	1		

Technical Specifications

Electrical Type	Capacitor Start Capacitor Run	Starting Method	Across The Line
Poles	2	Rotation	Selective Counterclockwise
Resistance Main	.52 Ohms	Mounting	Rigid Base
Motor Orientation	Horizontal	Drive End Bearing	Ball
Opp Drive End Bearing	Ball	Frame Material	Rolled Steel
Shaft Type	NEMA 56	Overall Length	13.84 in
Frame Length	9.00 in	Shaft Diameter	0.625 in
Shaft Extension	1.88 in	Assembly/Box Mounting	F1 ONLY
Outline Drawing	028709-900C	Connection Drawing	005056.02

This is an uncontrolled document once printed or downloaded and is subject to change without notice. Date Created:11/28/2022



ø.88 CONDUIT HOLE (PLUGGED)

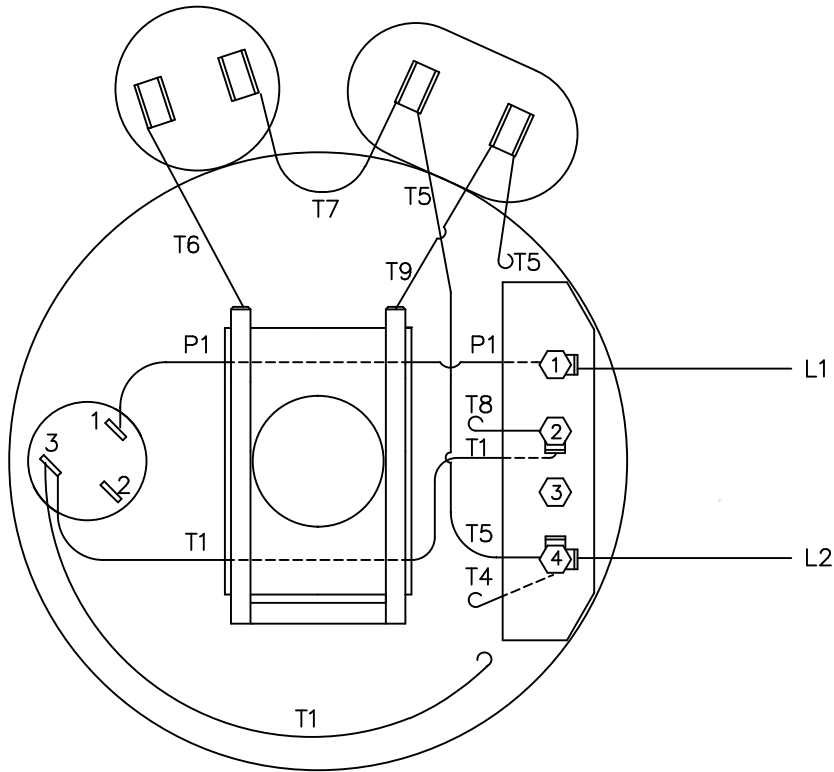
(4) 3/8-16 UNC-2B X .56 DEEP ON A ø5.875 B.C.

MAXIMUM FACE RUNOUT TO BE .004 T.I.R.
 MAXIMUM PILOT ECCENTRICITY .004 T.I.R.
 PERMISSIBLE SHAFT RUNOUT .002 T.I.R.

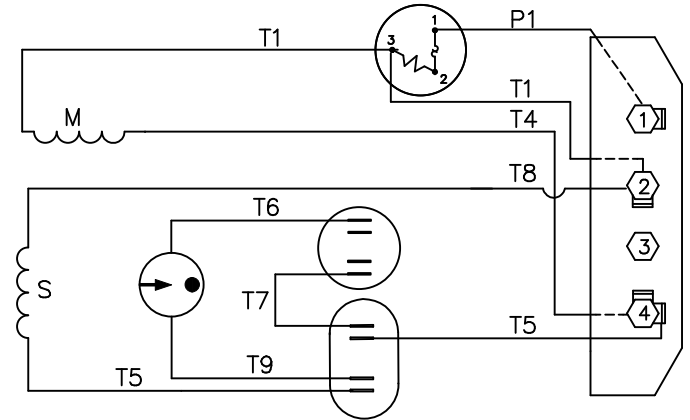
DASH NO.	"C"	"AD"	CAP. DASH	"XO"
650	11.34	5.88	A	1.08
700	11.84	6.38	B	1.42
750	12.34	6.88	C	1.69
800	12.84	7.38		
850	13.34	7.88		
900	13.84	8.38		

TOLERANCES UNLESS SPECIFIED		DEC. INCHES		LEESON ELECTRIC MOTORS GEARMOTORS AND DRIVES		DRAWN	RDW	8/15/05
.X	±.1	.XX	±.03	TITLE		CHK	APPD	SW 8/15/05
.XXX	±.005	.XXX	±.005	OUTLINE- 56HC FRAME DRIP PROOF - RIGID "C"		SCALE	1=2	
.02	UPDATED NP METAL TO MYLAR AS PER ECR-0221943	AP	11/02/22	PP	.XXX	±.005	REF	028586
NO.	REVISION	BY & DATE	CHK	ANG	±1/2"	FINISH	FMF	
			RFP	8/15/05	CAD FILE	028709	PREV	
THIS DRAWING IN DESIGN AND DETAIL IS OUR PROPERTY AND MUST NOT BE USED EXCEPT IN CONNECTION WITH OUR WORK ALL RIGHTS OF DESIGN AND INVENTION ARE RESERVED THIS IS AN ELECTRONICALLY GENERATED DOCUMENT - DO NOT SCALE THIS PRINT						SIZE	DRAWING NO.	REV.
						B	028709	02

VIEW FROM OUTSIDE OF MOTOR AT SWITCH END.

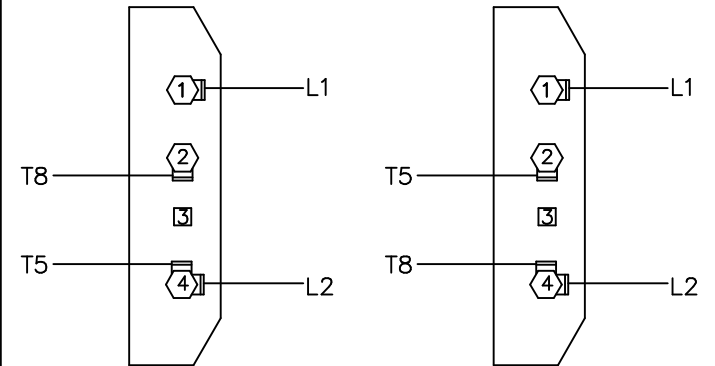


LINE LEADS



C.C.W. L.E. ROTATION

C.W. L.E. ROTATION



TOLERANCES UNLESS OTHERWISE SPECIFIED

DECIMALS

.00 ± .01

.000 ± .005

.0000 ± .0005

FRACTIONS ± 1/64

ANGLES ± 1/2°

INCH/MM

LEESON ELECTRIC CORPORATION

DRAWN JRW 12/12/75

CH'K'D. TEM

APPR. 12/17/75

SCALE 1=1

REF.

FMF A6K34DC1

TITLE EXTERNAL WIRING DIAGRAM
TYPE "K" W/ PROTECTOR

MAT'L. DECAL - 004112

BRF

FINISH

SIZE A

DRAWING NO. 005056-02

10	REDRAWN ON CAD	DBT	06/23/97
NO.	REVISION	BY	DATE

THIS DRAWING IN DESIGN AND DETAIL IS OUR PROPERTY AND MUST NOT BE USED EXCEPT IN CONNECTION WITH OUR WORK ALL RIGHTS OF DESIGN AND INVENTION ARE RESERVED



CERTIFICATION DATA SHEET

**1051 CHEYENNE AVE.
GRAFTON, WI 53024
PH. 262-377-8810**

CATALOG #: 116709.00

CONN. DIAGRAM: 005056.02

OUTLINE: 028709-900C

MOUNTING: F1 ONLY

WINDING #: K632130 DR 2 A

TYPICAL MOTOR PERFORMANCE DATA

HP	kW	SYNC. RPM	F.L. RPM	FRAME	ENCLOSURE	KVA CODE	DESIGN
5	3.70	3600	3450	56HC	DP	E	L

PH	Hz	VOLTS	AMPS	START TYPE	DUTY	INSL	S.F.	AMB°C
1	60	230	20.8	ACROSS THE LINE	CONTINUOUS	F4	1.0	40

FULL LOAD EFF:	82.5	3/4 LOAD EFF:	83.8	1/2 LOAD EFF:	82.8	GTD. EFF		ELEC. TYPE	
FULL LOAD PF:	95	3/4 LOAD PF:	93.8	1/2 LOAD PF:	91.4	80		CAP START CAP RUN	

F.L. TORQUE	LOCKED ROTOR AMPS	L.R. TORQUE	B.D. TORQUE	F.L. RISE°C
7.5 LB-FT	107	12.3 LB-FT 164 %	14.3 LB-FT 191 %	105

SOUND PRESSURE @ 3 FT.	SOUND POWER	ROTOR WK^2	MAX. WK^2	SAFE STALL TIME	STARTS / HOUR	APPROX. MOTOR WGT
0 dBA	10 dBA	0.095 LB-FT^2	0.1 LB-FT^2	10 SEC.	0	51 LBS.

***** SUPPLEMENTAL INFORMATION *****

DE BRACKET TYPE	ODE BRACKET TYPE	MOUNT TYPE	ORIENTATION	SEVERE DUTY	HAZARDOUS LOCATION	DRIP COVER	SCREENS	PAINT
C-FACE	STANDARD	RIGID	HORIZONTAL	FALSE	NONE	FALSE	NONE	BLUE - LEESON (ENAMEL)

BEARINGS		GREASE	SHAFT TYPE	SPECIAL DE	SPECIAL ODE	SHAFT MATERIAL	FRAME MATERIAL
DE	ODE						
BALL	BALL	POLYREX EM	STANDARD 56	NONE	NONE	1144 STRESSPROOF (C-223)	ROLLED STEEL
6205	6203						

THERMO-PROTECTORS				THERMISTORS	CONTROL	SPACE HEATERS
THERMOSTATS	PROTECTORS	WDG RTDs	BRG RTDs			
NONE	MANUAL	NONE	NONE	NONE	FALSE	NONE VOLTS

*
N
O
T
E
S

INVERTER TORQUE: NONE
INV. HP SPEED RANGE: NONE
ENCODER: NONE
NONE NONE
NONE NONE PPR
BRAKE: NONE NONE
NONE P/N NONE
NONE NONE
NONE FT-LB NONE V NONE Hz

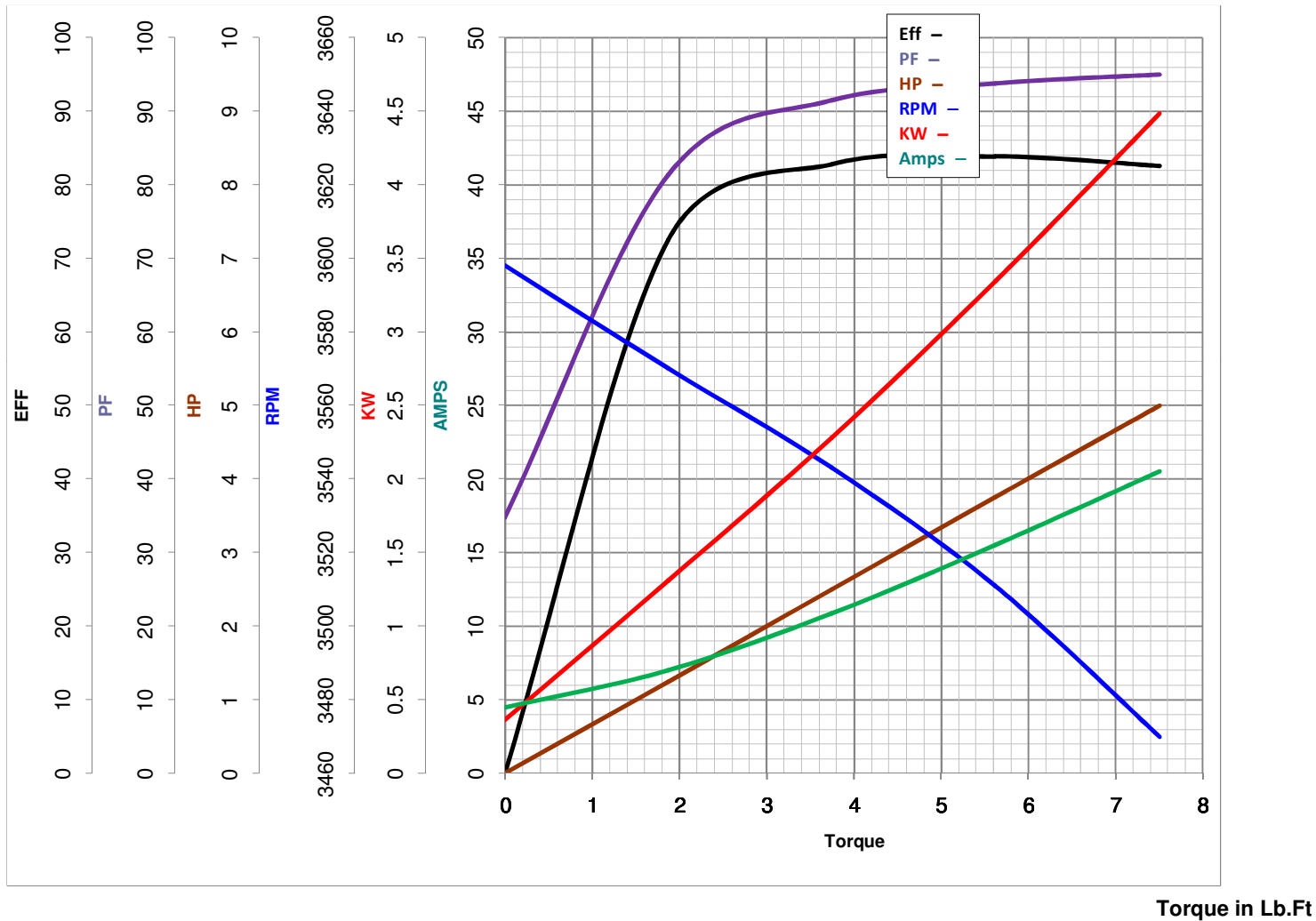


LEESON ELECTRIC CORPORATION
 TYPICAL PERFORMANCE CURVE for AC MOTOR

Model No 116709.00

Catalog No 116709.00

Curve at 230 Volts HP 5.00 PHASE 1
60 HZ
5 HP VOLTS 230
 HZ 60 RPM 3450



FL TORQUE 7.5 Lb.Ft
 BD TORQUE 14.3 Lb.Ft
 LR TORQUE 12.3 Lb.Ft

FL AMPS 20.8
 PU TORQUE 13.3 Lb.Ft
 LR AMPS 107

WINDING K632130-2

Date 4/23/2018