

PRODUCT INFORMATION PACKET



Model No: E116771.00

Catalog No: E116771.00

HP..3450RPM.56C.ODP.115/230V.1PH.60HZ.CONT.40C.1.15SF.RIGID C FACE.C6K34DK25.....GENERAL PURPOSE

General Purpose Motors



Regal and Leeson are trademarks of Regal Rexnord Corporation or one of its affiliated companies.

©2021 Regal Rexnord Corporation, All Rights Reserved. MC017097E



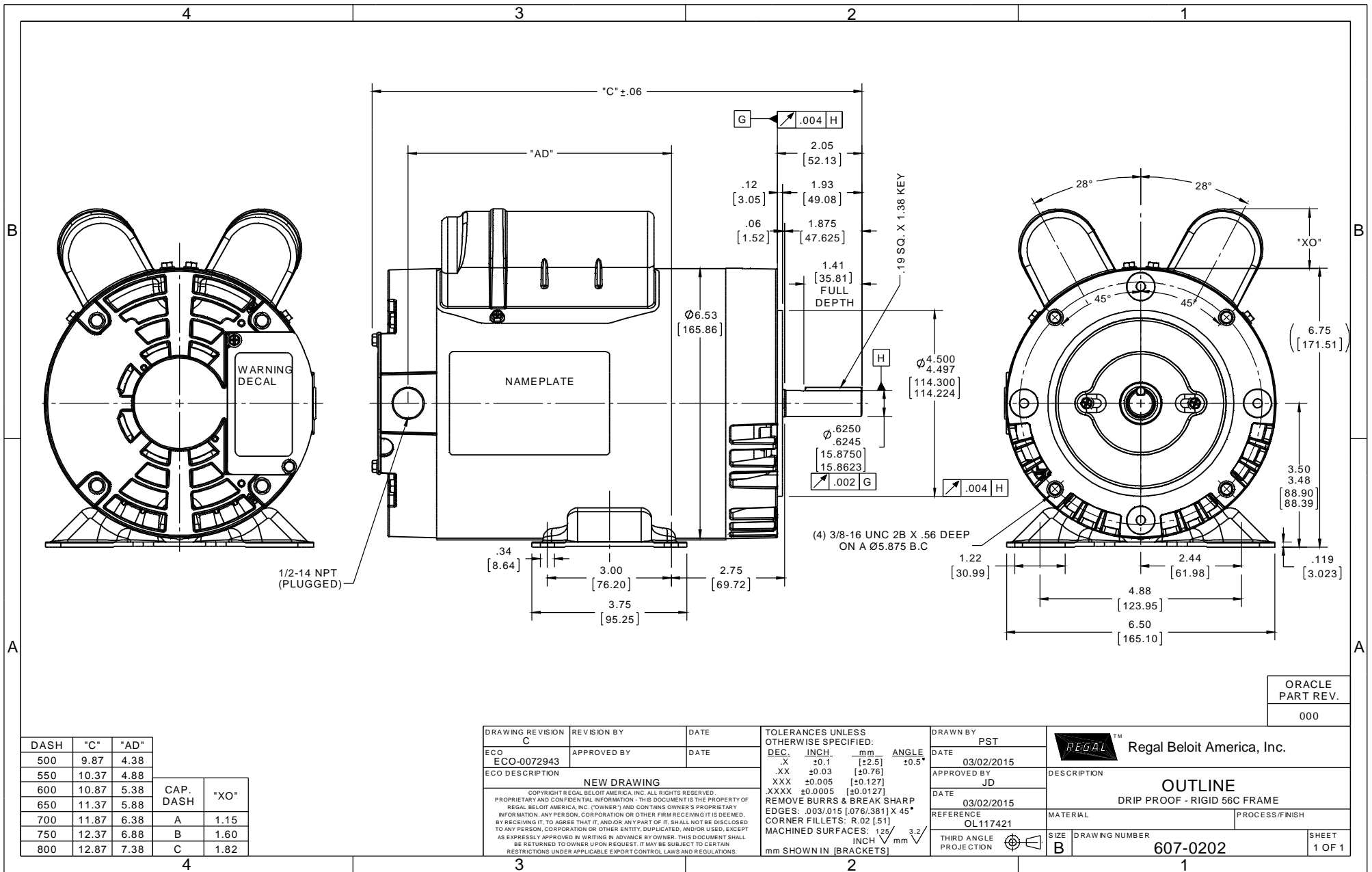


Nameplate Specifications

Output HP	2 Hp	Output KW	1.5 kW
Frequency	60 Hz	Voltage	115/230 V
Current	16.0/8.0 A	Speed	3450 rpm
Service Factor	1.15	Phase	1
Efficiency	82.9 %	Power Factor	99.3
Duty	Continuous	Insulation Class	F
Design Code	L	KVA Code	H
Frame	56C	Enclosure	Drip Proof
Thermal Protection	No	Ambient Temperature	40 °C
Drive End Bearing Size	6203	Opp Drive End Bearing Size	6203
UL	Recognized	CSA	Y
CE	Y	IP Code	22
Number of Speeds	1		

Technical Specifications

Electrical Type	Capacitor Start Capacitor Run	Starting Method	Across The Line
Poles	2	Rotation	Selective Counterclockwise
Resistance Main	1.24 Ohms	Mounting	Rigid Base
Motor Orientation	Horizontal	Drive End Bearing	Ball
Opp Drive End Bearing	Ball	Frame Material	Rolled Steel
Shaft Type	NEMA 56	Overall Length	11.87 in
Frame Length	7.00 in	Shaft Diameter	0.625 in
Shaft Extension	1.88 in	Assembly/Box Mounting	F1 ONLY
Outline Drawing	607-0202-700B	Connection Drawing	005054.01



DASH	"C"	"AD"	CAP. DASH	"XO"
500	9.87	4.38		
550	10.37	4.88		
600	10.87	5.38		
650	11.37	5.88	A	1.15
700	11.87	6.38	B	1.60
750	12.37	6.88		
800	12.87	7.38	C	1.82

DRAWING REVISION	REVISION BY	DATE
C		
ECO-0072943	APPROVED BY	DATE
NEW DRAWING		

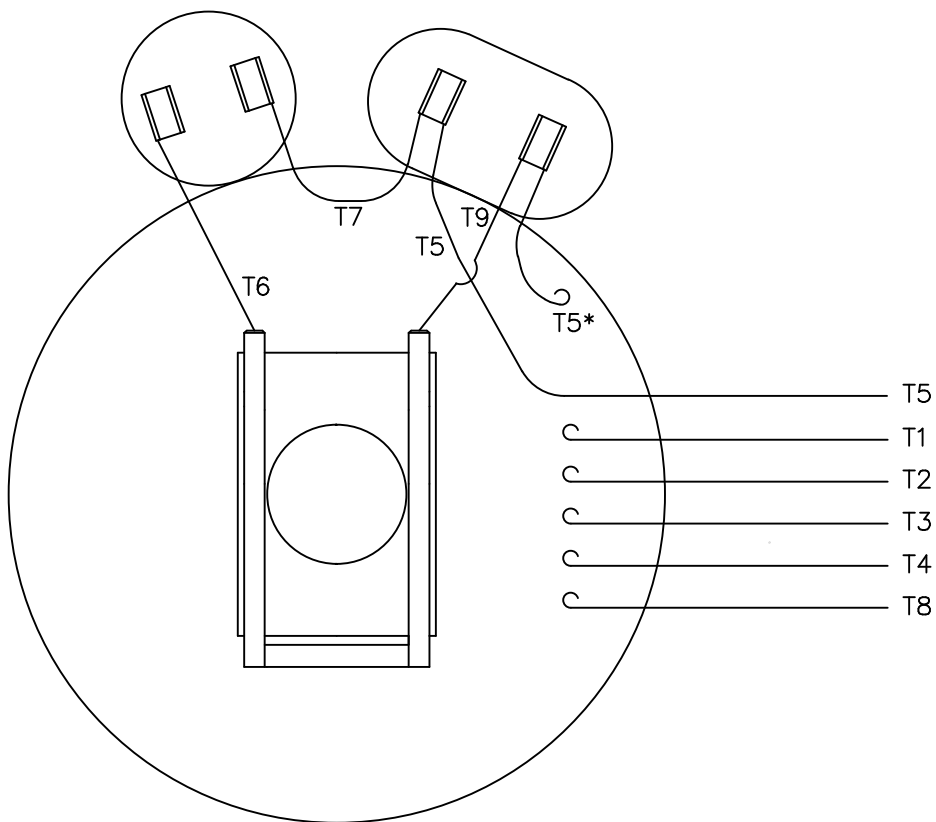
COPYRIGHT REGAL BELOIT AMERICA, INC. ALL RIGHTS RESERVED. PROPRIETARY AND CONFIDENTIAL INFORMATION. THIS DOCUMENT IS THE PROPERTY OF REGAL BELOIT AMERICA, INC. (OWNER) AND CONTAINS OWNER'S PROPRIETARY INFORMATION. ANY PERSON, CORPORATION OR OTHER FIRM RECEIVING IT IS DEEMED, BY RECEIVING IT, TO AGREE THAT IT, AND/OR ANY PART OF IT, SHALL NOT BE DISCLOSED TO ANY PERSON, CORPORATION OR OTHER ENTITY, DUPLICATED, AND/OR USED, EXCEPT AS EXPRESSLY APPROVED IN WRITING IN ADVANCE BY OWNER. THIS DOCUMENT SHALL BE RETURNED TO OWNER UPON REQUEST. IT MAY BE SUBJECT TO CERTAIN RESTRICTIONS UNDER APPLICABLE EXPORT CONTROL LAWS AND REGULATIONS.

TOLERANCES UNLESS OTHERWISE SPECIFIED:		
DEC.	INCH.	mm ANGLE
.X	±0.1	[±2.5] ±0.5°
.XX	±0.03	[±0.76]
.XXX	±0.005	[±0.127]
.XXXX	±0.0005	[±0.0127]

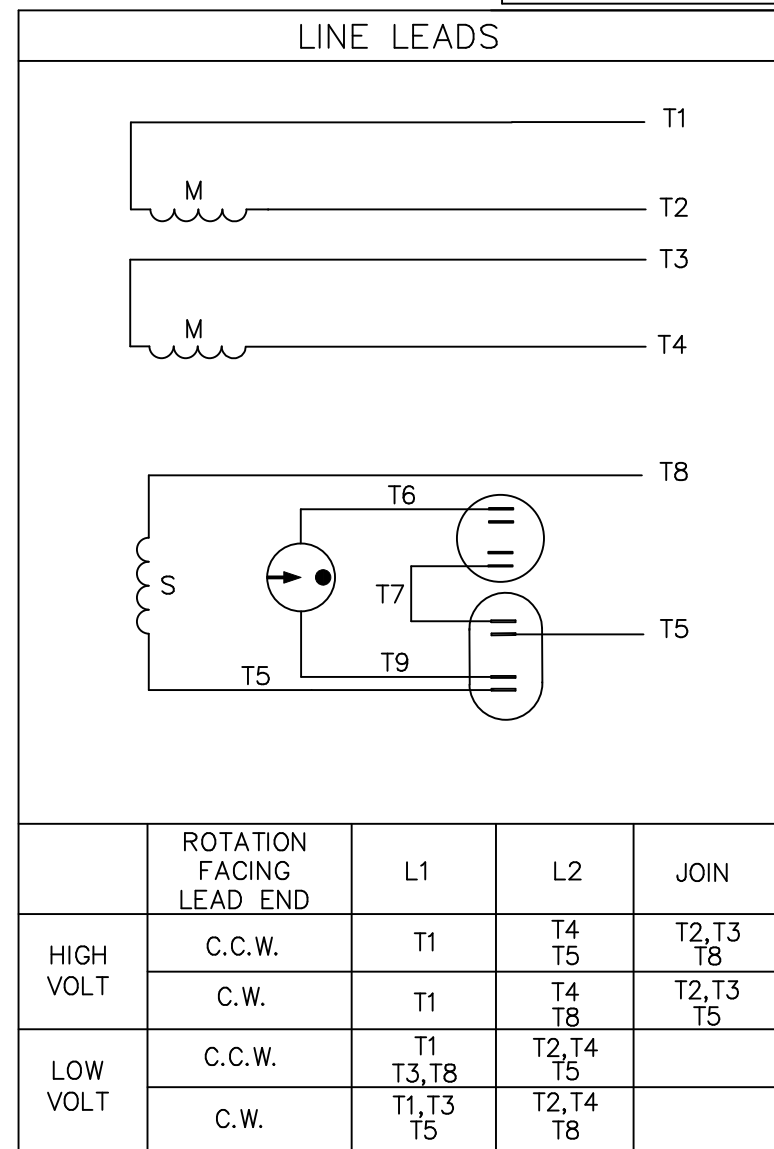
REMOVE BURRS & BREAK SHARP EDGES: .003/.015 [0.076/.381] X 45°
 CORNER FILLETS: R.02 [51]
 MACHINED SURFACES: 125 INCH/mm 3.2 mm SHOW IN [BRACKETS]

DRAWN BY	PST	Regal Beloit America, Inc.	
DATE	03/02/2015	APPROVED BY	JD
DATE	03/02/2015	DESCRIPTION	OUTLINE DRIP PROOF - RIGID 56C FRAME
REFERENCE	OL117421	MATERIAL	PROCESS/FINISH
THIRD ANGLE PROJECTION		SIZE	DRAWING NUMBER
		B	607-0202
			ORACLE PART REV. 000
			SHEET 1 OF 1

VIEW FROM OUTSIDE OF MOTOR AT SWITCH END.



* THIS LEAD MAY BE WHITE



		TOLERANCES UNLESS SPECIFIED		ELECTRIC MOTORS GEARMOTORS AND DRIVES		DRAWN JRW 09/27/74	
		DEC.	INCHES			CHK	TEM
			.X	±.1		APPD	10/11/74
11	ALTERNATE T5 LEAD MARKING WAS RED	RLW	8/6/02	.XX	±.01	TITLE	SCALE 1=1
10	ADDED ALTERNATE T5 LEAD MARKING	RLW	6/5/02	KH	.XXX ±.005	EXT. WIRING DIAGRAM TYPE "K" W/O PROTECTOR	REF A-005053
09	REDRAWN TO CAD	DBT	05/28/97		.XXXX ±.0005	MAT'L. DECAL-004012	FMF W-K6343
NO.	REVISION	BY & DATE	CHK	ANG	±1/2"	FINISH	PREV
THIS DRAWING IN DESIGN AND DETAIL IS OUR PROPERTY AND MUST NOT BE USED EXCEPT IN CONNECTION WITH OUR WORK ALL RIGHTS OF DESIGN AND INVENTION ARE RESERVED THIS IS AN ELECTRONICALLY GENERATED DOCUMENT - DO NOT SCALE THIS PRINT		RFP	CAD FILE	00505401	SIZE	DRAWING NO.	REV.
		DIST	BRF-NLV	A	005054-01	11	



1051 CHEYENNE AVE.
GRAFTON, WI 53024
PH. 262-377-8810

CERTIFICATION DATA SHEET

CONN. DIAGRAM: 005054.01
OUTLINE: 607-0202-700B
WINDING #: K632186 DR 3 A

CATALOG #: E116771.00
MOUNTING: F1 ONLY

TYPICAL MOTOR PERFORMANCE DATA

HP	kW	SYNC. RPM	F.L. RPM	FRAME	ENCLOSURE	KVA CODE	DESIGN
2	1.49	3600	3450	56C	DP	H	L

PH	Hz	VOLTS	AMPS	START TYPE	DUTY	INSL	S.F.	AMB°C
1	60	115/230	16/8	ACROSS THE LINE	CONTINUOUS	F4	1.15	40

FULL LOAD EFF:	82.9	3/4 LOAD EFF:	82.7	1/2 LOAD EFF:	78.1	GTD. EFF		ELEC. TYPE	
FULL LOAD PF:	99.3	3/4 LOAD PF:	99.6	1/2 LOAD PF:	99	80		CAP START CAP RUN	

F.L. TORQUE	LOCKED ROTOR AMPS	L.R. TORQUE	B.D. TORQUE	F.L. RISE°C
48.15 OZ-FT	115.2 / 57.6	108.98 OZ-FT 226 %	105.59 OZ-FT 219 %	26.4

SOUND PRESSURE @ 3 FT.	SOUND POWER	ROTOR WK^2	MAX. WK^2	SAFE STALL TIME	STARTS / HOUR	APPROX. MOTOR WGT
0 dBA	10 dBA	0.074 LB-FT^2	0 LB-FT^2	0 SEC.	0	38 LBS.

***** SUPPLEMENTAL INFORMATION *****

DE BRACKET TYPE	ODE BRACKET TYPE	MOUNT TYPE	ORIENTATION	SEVERE DUTY	HAZARDOUS LOCATION	DRIP COVER	SCREENS	PAINT
C-FACE	STANDARD	RIGID	HORIZONTAL	FALSE	NONE	FALSE	NONE	GREEN - LEESON WATTS AVER

BEARINGS		GREASE	SHAFT TYPE	SPECIAL DE	SPECIAL ODE	SHAFT MATERIAL	FRAME MATERIAL
DE	ODE						
BALL	BALL	POLYREX EM	STANDARD 56	VERIFY	VERIFY	1144 STRESSPROOF (C-223)	ROLLED STEEL
6203	6203						

THERMO-PROTECTORS				THERMISTORS	CONTROL	SPACE HEATERS
THERMOSTATS	PROTECTORS	WDG RTDs	BRG RTDs			
NONE	NOT	NONE	NONE	NONE	FALSE	NONE VOLTS

*
N
O
T
E
S
*

INVERTER TORQUE: NONE
INV. HP SPEED RANGE: NONE
ENCODER: NONE NONE NONE NONE NONE PPR
BRAKE: NONE NONE NONE P/N NONE NONE NONE NONE FT-LB NONE V NONE Hz



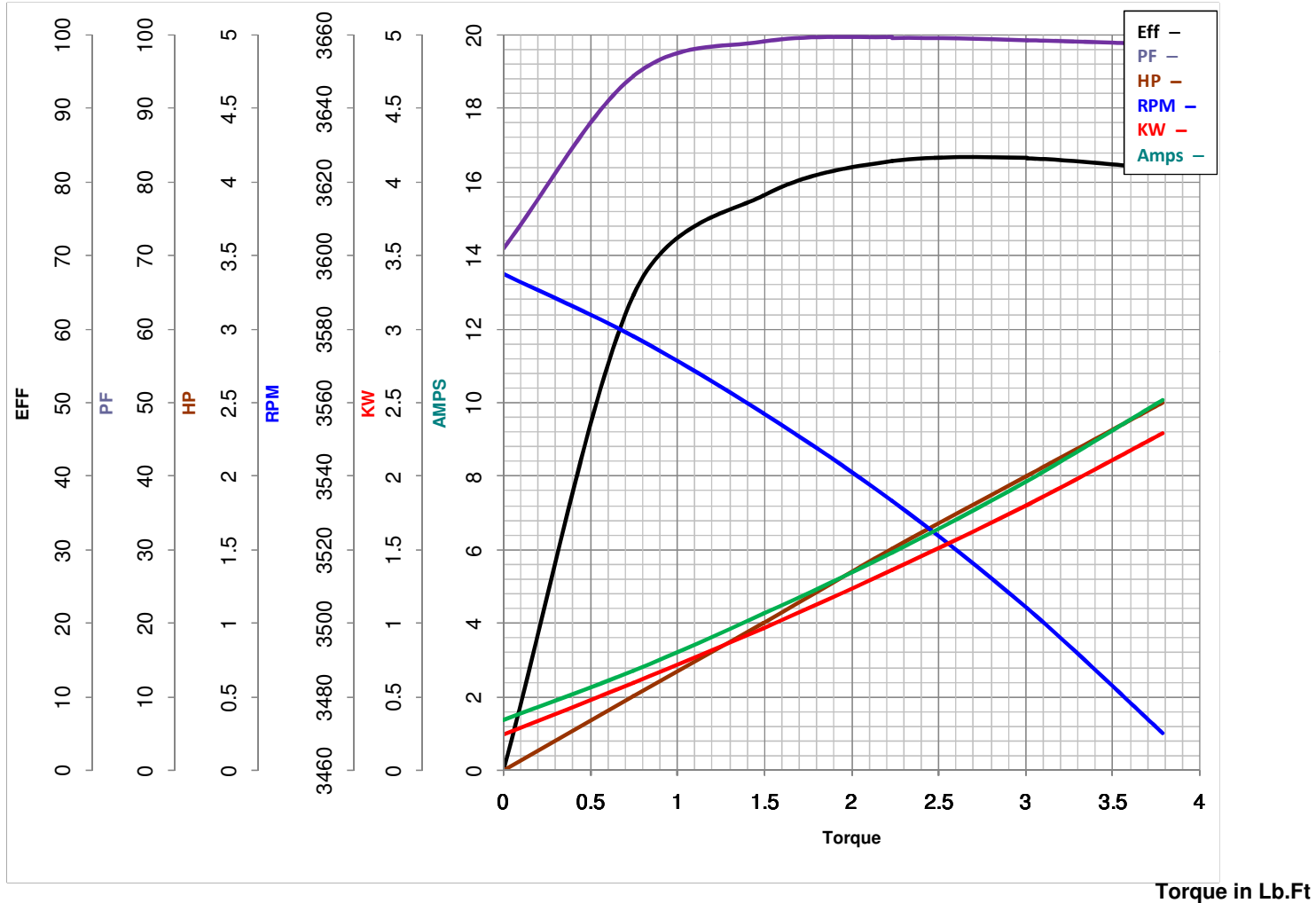
LEESON ELECTRIC CORPORATION
TYPICAL PERFORMANCE CURVE for AC MOTOR

Model No E116771.00

Catalog No E116771.00

Curve at 230 Volts HP 2.00 PHASE 1
60 HZ
2 HP VOLTS 115/230

HZ 60 RPM 3450



FL TORQUE	<u>3.009</u> Lb.Ft	FL AMPS	<u>16/8</u>
BD TORQUE	<u>6.6</u> Lb.Ft	PU TORQUE	<u>5.8</u> Lb.Ft
LR TORQUE	<u>6.811</u> Lb.Ft	LR AMPS	<u>57.6</u>
WINDING	K632186-3	Date	<u>7/17/2018</u>