

PRODUCT INFORMATION PACKET



Model No: 103797.00

Catalog No: 103797.00

..1/4HP..1800RPM.48.ODP.115/230V.1PH.60HZ.CONT.40C.1.35SF.RESILIENT BASE.....FAN DUTY.....

Refrigeration Motors



Regal and Leeson are trademarks of Regal Rexnord Corporation or one of its affiliated companies.

©2021 Regal Rexnord Corporation, All Rights Reserved. MC017097E





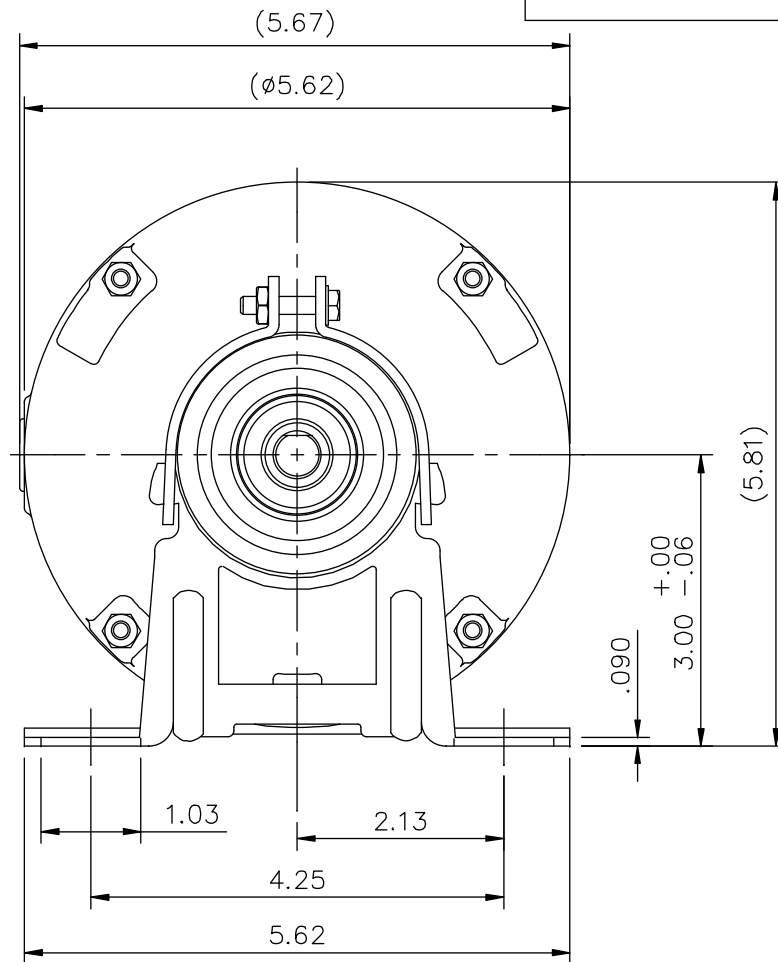
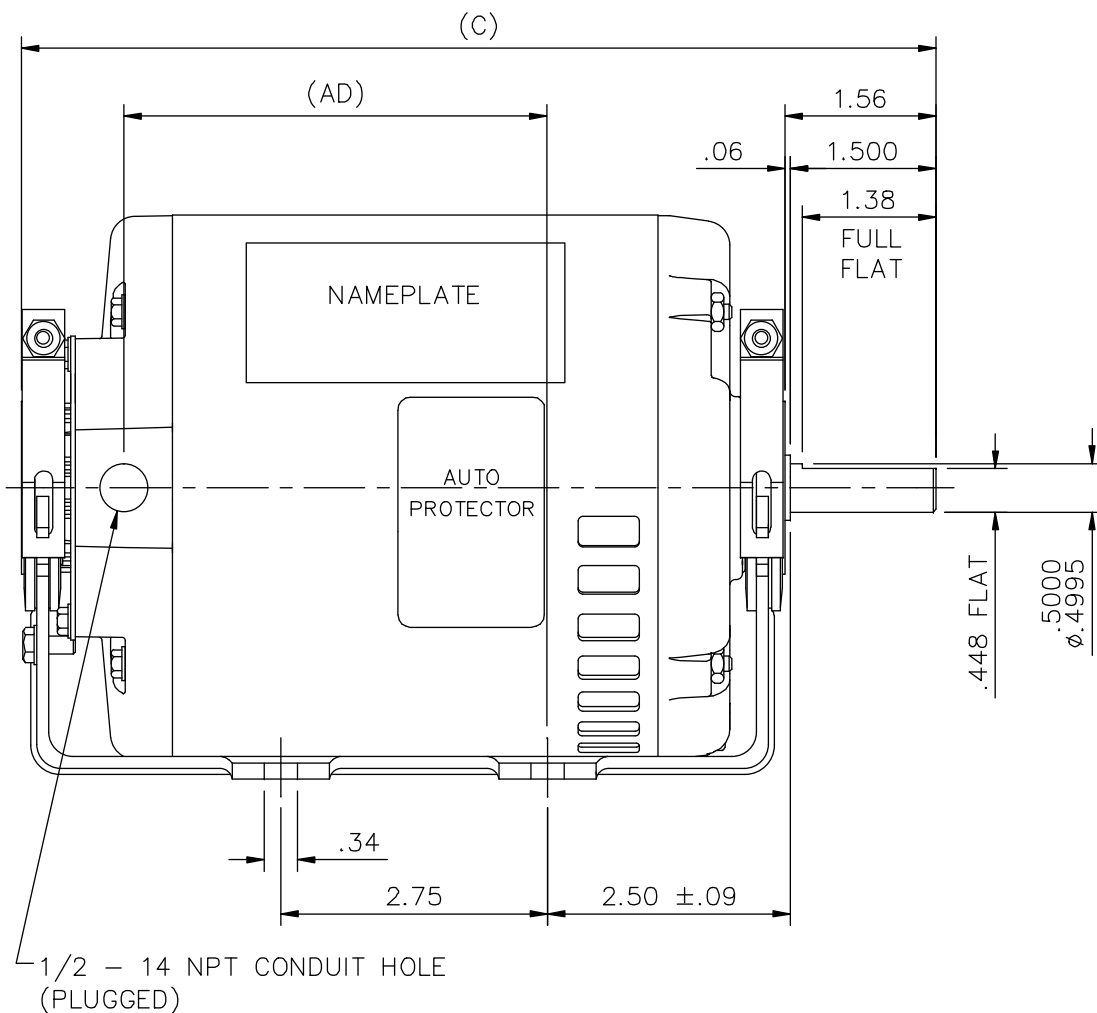
Nameplate Specifications

Output HP	0.25 Hp	Output KW	0.19 kW
Frequency	60 Hz	Voltage	115/230 V
Current	5.2/2.6 A	Speed	1725 rpm
Service Factor	1.35	Phase	1
Efficiency	60 %	Power Factor	57.5
Duty	Continuous	Insulation Class	B
Design Code	O	KVA Code	R
Frame	48Z	Enclosure	Drip Proof
Thermal Protection	Automatic	Ambient Temperature	40 °C
Drive End Bearing Size	6203	Opp Drive End Bearing Size	6203
UL	Recognized	CSA	Y
CE	N	IP Code	22
Number of Speeds	1		


Technical Specifications

Electrical Type	Split Phase	Starting Method	Across The Line
Poles	4	Rotation	Selective Counterclockwise
Resistance Main	0 Ohms	Mounting	Resilient Base
Motor Orientation	Horizontal	Drive End Bearing	Ball
Opp Drive End Bearing	Ball	Frame Material	Rolled Steel
Shaft Type	Single Special Extension	Overall Length	9.93 in
Frame Length	5.50 in	Shaft Diameter	0.500 in
Shaft Extension	2.24 in	Assembly/Box Mounting	F1 ONLY
Connection Drawing	005212-05	Outline Drawing	SS404043-550

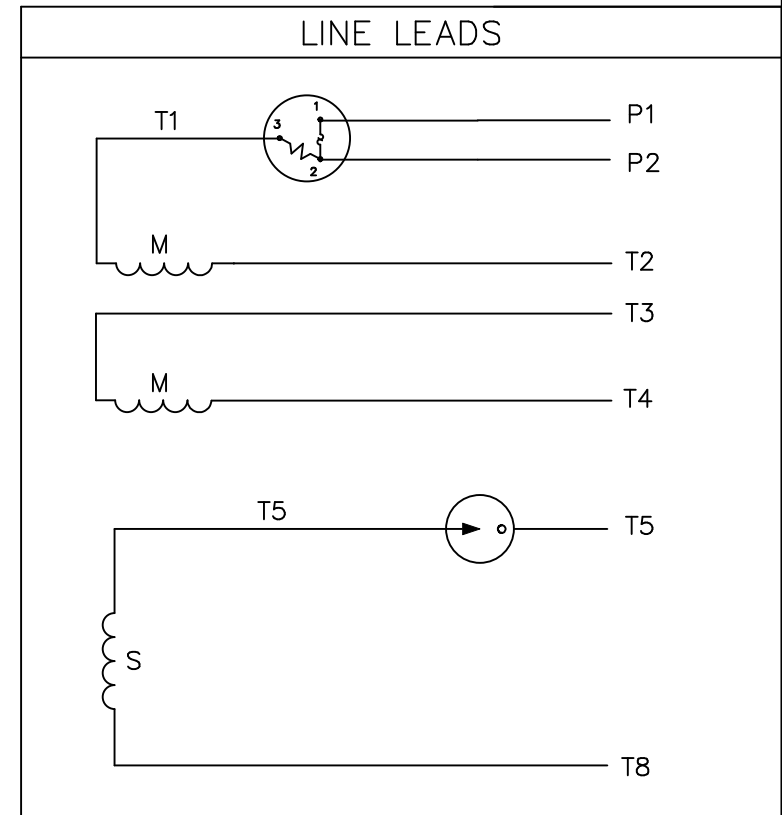
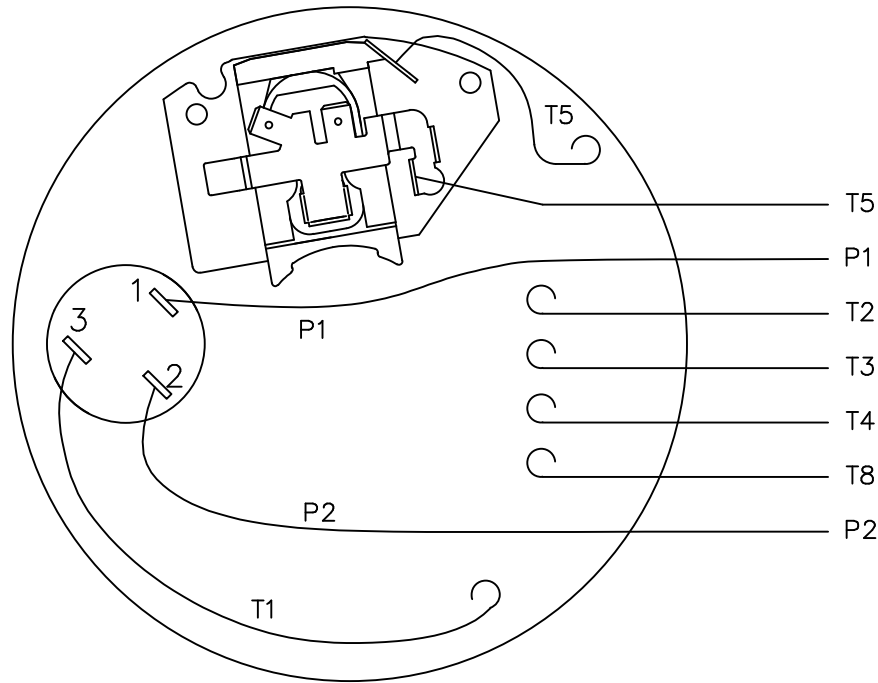
SS404043




DASH	C	AD
500	9.43	4.36
550	9.93	4.86
575	10.18	5.11
600	10.43	5.36

		TOLERANCES UNLESS SPECIFIED		 ELECTRIC MOTORS GEARMOTORS AND DRIVES	DRAWN KR 08/01/2013	
		DEC.	INCHES		CHK SM 08/01/2013	
		.X	±.1		APPD	
		.XX	±.03		SCALE 1:1	
		.XXX	±.005		REF OL101865	
		.XXXX	±.0005	TITLE	OUTLINE - 48 FRAME RESILIENT MOUNT - DRIP PROOF	
				MAT'L.	1 PHASE	
NO.	REVISION	BY & DATE	CHK	ANG	FINISH	PREV
THIS DRAWING IN DESIGN AND DETAIL IS OUR PROPERTY AND MUST NOT BE USED EXCEPT IN CONNECTION WITH OUR WORK ALL RIGHTS OF DESIGN AND INVENTION ARE RESERVED THIS IS AN ELECTRONICALLY GENERATED DOCUMENT - DO NOT SCALE THIS PRINT			RFP		CAD FILE	SS404043
			DIST		SIZE	DRAWING NO.
					A	SS404043
						REV.

CAUTION: WHEN APPLYING
A PROTECTOR, BE OBSERVANT
OF TIME/TEMPERATURE ON LOW
VOLTAGE LOCK.



	ROTATION FACING LEAD END	L1	L2	JOIN	INSULATE SEPARATE
HIGH VOLT	C.C.W.	P1	T4, T5	T2, T3 T8	P2
	C.W.	P1	T4, T8	T2, T3 T5	P2
LOW VOLT	C.C.W.	P1	T2, T4 T5	P2 T3, T8	---
	C.W.	P1	T2, T4 T8	P2 T3, T5	---

		TOLERANCES UNLESS SPECIFIED		 ELECTRIC MOTORS GEARMOTORS AND DRIVES		DRAWN KMM 05/20/02				
		DEC.	INCHES			CHK	APPD			
		.X	±.1	TITLE EXTERNAL WIRING DIAGRAM		SCALE	5=8			
		.XX	±.01			REF	005212-01			
		.XXX	±.005			FMF	102511			
		.XXXX	±.0005			PREV				
NO.	REVISION	BY & DATE	CHK	ANG	±1/2"	FINISH	TYPE "S" W/PROTECTOR	SIZE	DRAWING NO.	REV.
			RFP			CAD FILE	00521205	A	005212-05	
				DIST						

THIS DRAWING IN DESIGN AND DETAIL IS OUR PROPERTY AND MUST NOT BE USED EXCEPT
IN CONNECTION WITH OUR WORK ALL RIGHTS OF DESIGN AND INVENTION ARE RESERVED
THIS IS AN ELECTRONICALLY GENERATED DOCUMENT - DO NOT SCALE THIS PRINT



**1051 CHEYENNE AVE.
GRAFTON, WI 53024
PH. 262-377-8810**

CERTIFICATION DATA SHEET

CONN. DIAGRAM: A-005212-05

CATALOG #: 103797.00

OUTLINE: A-SS404043-550

MOUNTING: F1 ONLY

WINDING #: SE484249 3 A

TYPICAL MOTOR PERFORMANCE DATA

HP	kW	SYNC. RPM	F.L. RPM	FRAME	ENCLOSURE	KVA CODE	DESIGN
1/4	0.19	1800	1725	48Z	DP	R	O

PH	Hz	VOLTS	AMPS	START TYPE	DUTY	INSL	S.F.	AMB°C
1	60	115/230	5.2/2.6	ACROSS THE LINE	CONTINUOUS	B3	1.35	40

FULL LOAD EFF:	60	3/4 LOAD EFF:	53.3	1/2 LOAD EFF:	44.8	GTD. EFF	ELEC. TYPE
FULL LOAD PF:	57.5	3/4 LOAD PF:	49.3	1/2 LOAD PF:	40.6	57.5	SPLIT PHASE

F.L. TORQUE	LOCKED ROTOR AMPS	L.R. TORQUE	B.D. TORQUE	F.L. RISE°C
12.1 OZ-IN	35.7 / 17.9	25.4 OZ-IN 0 %	31.5 OZ-IN 0 %	40

SOUND PRESSURE @ 3 FT.	SOUND POWER	ROTOR WK^2	MAX. WK^2	SAFE STALL TIME	STARTS / HOUR	APPROX. MOTOR WGT
0 dBA	10 dBA	0 LB-FT^2	0 LB-FT^2	10 SEC.	0	19 LBS.

***** SUPPLEMENTAL INFORMATION *****

DE BRACKET TYPE	ODE BRACKET TYPE	MOUNT TYPE	ORIENTATION	SEVERE DUTY	HAZARDOUS LOCATION	DRIP COVER	SCREENS	PAINT
STANDARD	STANDARD	RESILIENT BASE	HORIZONTAL	FALSE	NONE	FALSE	NONE	GRAY - LIGHT

BEARINGS		GREASE	SHAFT TYPE	SPECIAL DE	SPECIAL ODE	SHAFT MATERIAL	FRAME MATERIAL
DE	ODE						
BALL	BALL	MULTEMP SRL	SGL SPL EXT	0.500 x 1.50 IN SEF WITH 1.38 IN FULL FLAT	NONE	1144 STRESSPROOF (C-223)	ROLLED STEEL
6203	6203						

THERMO-PROTECTORS				THERMISTORS	CONTROL	SPACE HEATERS
THERMOSTATS	PROTECTORS	WDG RTDs	BRG RTDs			
NONE	AUTOMATIC	NONE	NONE	NONE	FALSE	NONE VOLTS

*
N
O
T
E
S

INVERTER TORQUE: NONE
INV. HP SPEED RANGE: NONE
ENCODER: NONE
NONE NONE
NONE NONE PPR
BRAKE: NONE NONE
NONE P/N NONE
NONE NONE
FT-LB NONE V NONE Hz

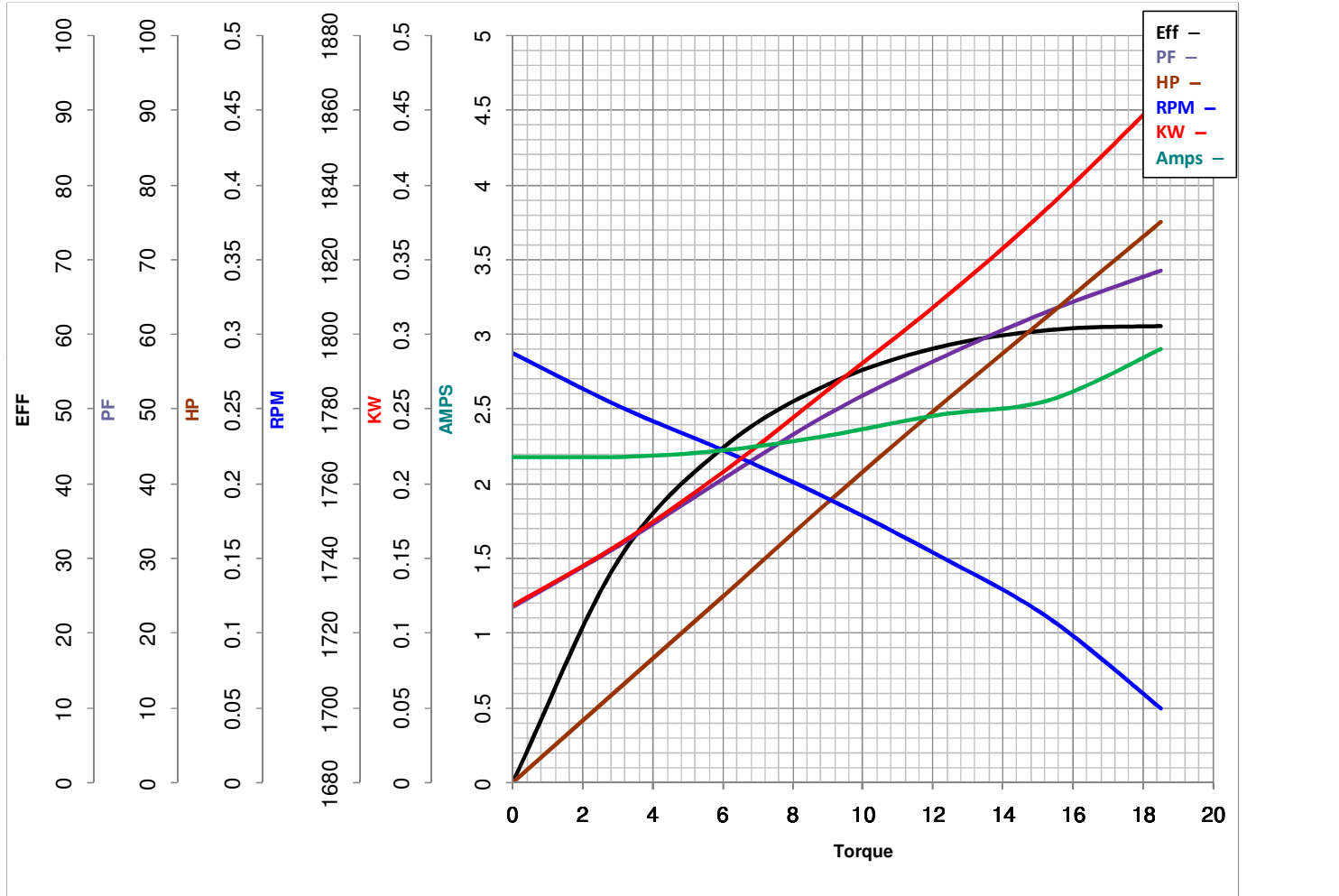


LEESON ELECTRIC CORPORATION
TYPICAL PERFORMANCE CURVE for AC MOTOR

Model No 103797.00

Catalog No 103797.00

Curve at 230 Volts HP 0.25 PHASE 1
60 HZ
0.25 HP VOLTS 115/230
HZ 60 RPM 1725



Torque in Oz.Ft

FL TORQUE 12.1 Oz.Ft
 BD TORQUE 31.5 Oz.Ft
 LR TORQUE 25.4 Oz.Ft

FL AMPS 5.2/2.6
 PU TORQUE 25.3 Oz.Ft
 LR AMPS 17.85

WINDING SE484249-3

Date 3/12/2019