

PRODUCT INFORMATION PACKET



Model No: M1125281.00
Catalog No: M1125281.00
0.25 HP DC Gearmotor, 125 RPM, 12 V, 32 Frame, TENV
Right Angle Gearmotors



Regal and Leeson are trademarks of Regal Rexnord Corporation or one of its affiliated companies.
©2021 Regal Rexnord Corporation, All Rights Reserved. MC017097E





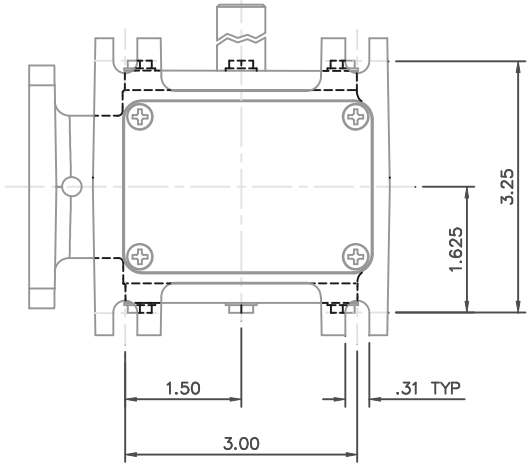
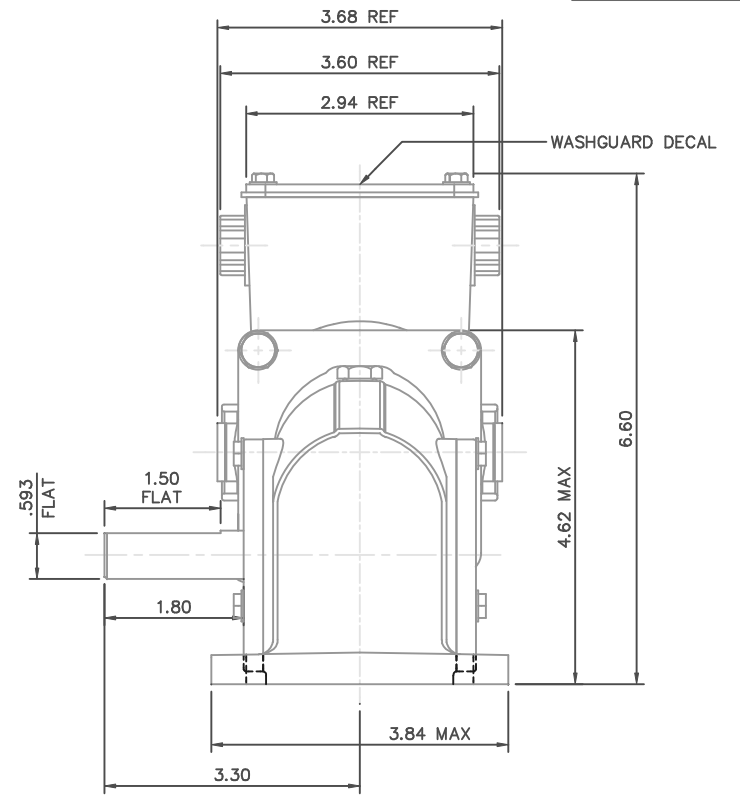
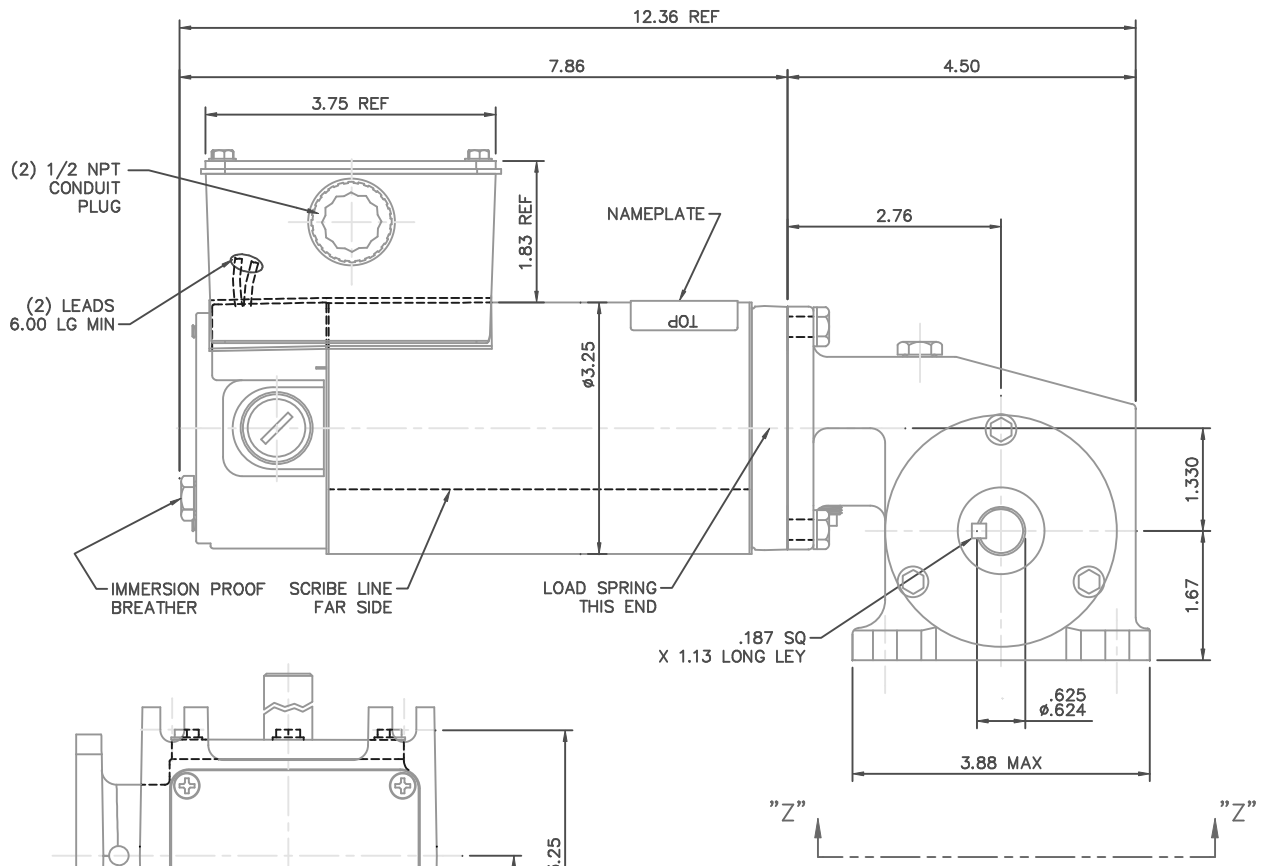
Nameplate Specifications

Output HP	0.25 Hp	Output KW	0.19 kW
Voltage	12 V	Current	28.0 A
Speed	125 rpm	Service Factor	1
Efficiency	36.6 %	Duty	Continuous
Insulation Class	F	Frame	32
Enclosure	IP55	Thermal Protection	No
Ambient Temperature	40 °C	Drive End Bearing Size	6201
Opp Drive End Bearing Size	6201	UL	Recognized
CSA	Y	CE	N

Technical Specifications

Rotation	Reversible	Mounting	Special
Shaft Type	Right Angle	Overall Length	12.36 in
Frame Length	5.44 in	Shaft Diameter	0.625 in
Shaft Extension	1.8 in	Torque	90 LB-IN
Outline Drawing	M1030981-M1125281	Connection Drawing	M100530801

This is an uncontrolled document once printed or downloaded and is subject to change without notice. Date Created:10/11/2021



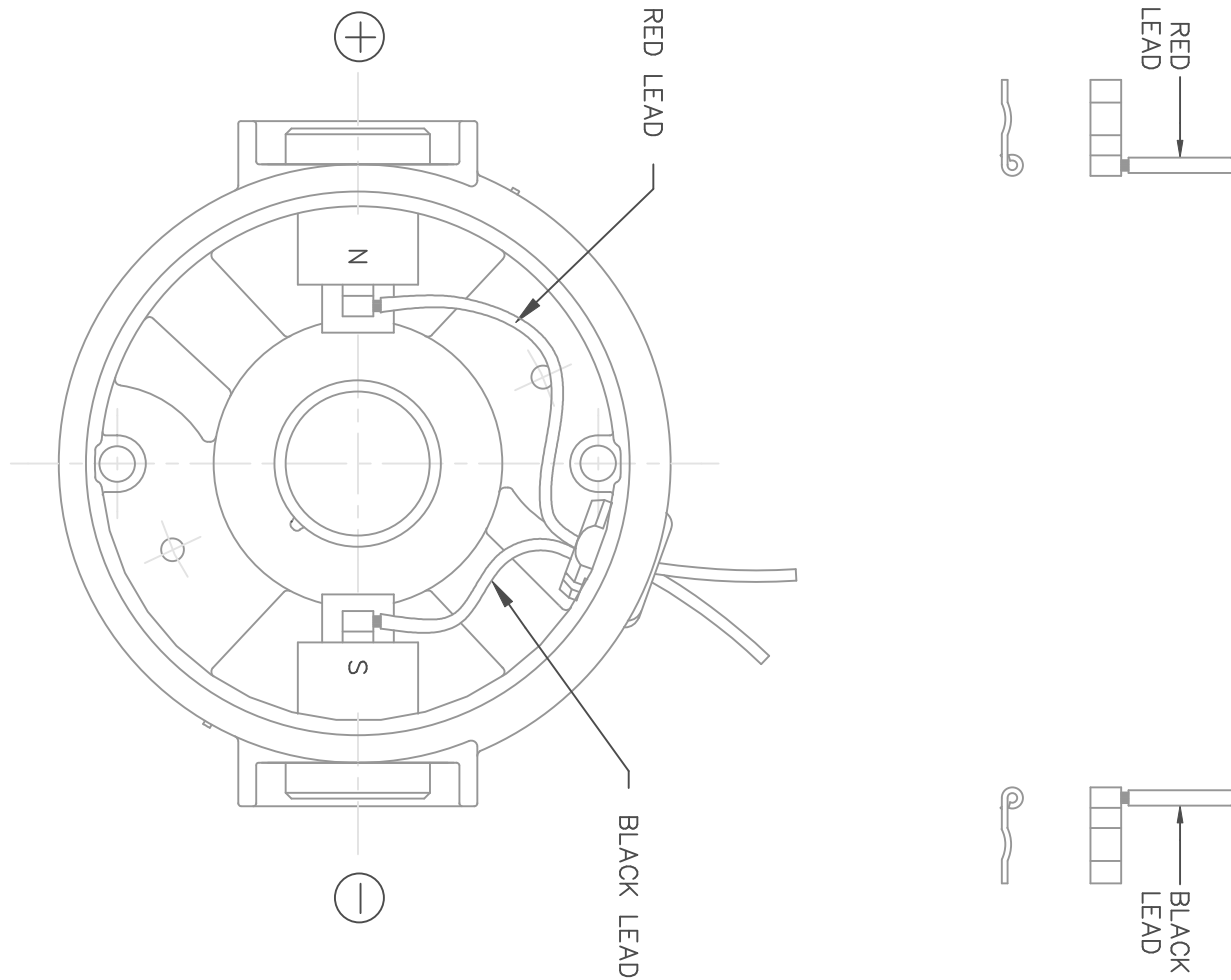
VIEW "Z-Z"

NOTES:
 1) GASKETS BETWEEN FRAME AND ENDBELLS, CONDUIT BOX AND FRAME, AND CONDUIT BOX COVER AND CONDUIT BOX.


CATALOG NUMBER	SPEED RANGE RPM	FULL LOAD TORQUE LB.-IN.	INPUT HP	OVERHUNG LOAD LBS.	RATIO TO 1
M1125280.00	62-1	135	1/4	235	40
M1125281.00	125-2.1	90	1/4	235	20

REVISION		BY & DATE	CHK	ANG	±	FINISH	LEESON ELECTRIC MOTORS GEARMOTORS AND DRIVES		DRAWN	IPG	4/30/05
03	1/2 NPT CONDUIT PLUG QTY. WAS 3.	ISAAC 08-3457	RPB	7/30/08	BC	DEC.	INCHES	<div style="display: flex; align-items: center;"> <p>OUTLINE - 32 FRAME DC 13 SERIES 12V GEARMOTOR</p> </div>	CHK	SAD	4/30/05
02	REMOVED (2) O-RINGS FROM INSIDE OF BRUSH HOLDERS.					.XX	±.1		APPD		
	CHANGED BRUSH CAPS & ADDED TEFLON.	ECN 07-4102	RPB	11/27/07	BC	.XX	±.03		SCALE	5=8	
01	CHANGED TO DIE CAST GEARBOX PER ECN 06-3023.		RPB	7/12/06	BC	.XXX	±.005		REF	M1030980.00	
00	RELEASED: REF. M1030980.00 & PRO40130-RD1		IPG	4/30/05	SAD	.XXXX	±.0005		FMF	M1125280.00	
THIS DRAWING IN DESIGN AND DETAIL IS OUR PROPERTY AND MUST NOT BE USED EXCEPT IN CONNECTION WITH OUR WORK ALL RIGHTS OF DESIGN AND INVENTION ARE RESERVED THIS IS AN ELECTRONICALLY GENERATED DOCUMENT - DO NOT SCALE THIS PRINT			RFP			CHK	ANG	±1/2"	PREV		
							CAD FILE	M1030981	SIZE	DRAWING NO.	REV.
							DIST		B	M1030981.00	03

D.C. MOTORS



EXTERNAL CONNECTIONS FOR CW ROTATION
 VIEWING LEAD END OF MOTOR WITH RED LEAD
 POSITIVE (+) AND BLACK LEAD NEGATIVE (-)
 FOR CCW ROTATION REVERSE POLARITY

				TOLERANCES UNLESS SPECIFIED		 ELECTRIC MOTORS GEARMOTORS AND DRIVES	DRAWN IPG 4/8/05 CHK SAD 4/8/05 APPD SCALE 1=1 REF PR040117-RD1 FMF M1120085.00 PREV	
				DEC.	INCHES		TITLE	CONNECTION DIAGRAM
				.X	±.1			
				.XX	±.01			
				.XXX	±.005			
00	RELEASED: REF. PR040117-RD1	IPG	4/8/05	SAD	.XXXX	±.0005	MAT'L.	
NO.	REVISION	BY & DATE		CHK	ANG	±1/2'	FINISH	
THIS DRAWING IN DESIGN AND DETAIL IS OUR PROPERTY AND MUST NOT BE USED EXCEPT IN CONNECTION WITH OUR WORK ALL RIGHTS OF DESIGN AND INVENTION ARE RESERVED THIS IS AN ELECTRONICALLY GENERATED DOCUMENT - DO NOT SCALE THIS PRINT				RFP	CAD FILE M100530801		SIZE	
				DIST			DRAWING NO.	
						A	M1005308.01	
						REV. 00		