

# PRODUCT INFORMATION PACKET



Model No: 116706.00  
Catalog No: 116706.00  
Pressure Washer Motor, 3 HP, 1 Ph, 60 Hz, 230 V, 3600 RPM, 56H Frame, DP



Regal and Leeson are trademarks of Regal Rexnord Corporation or one of its affiliated companies.  
©2022 Regal Rexnord Corporation, All Rights Reserved. MC017097E





### Nameplate Specifications

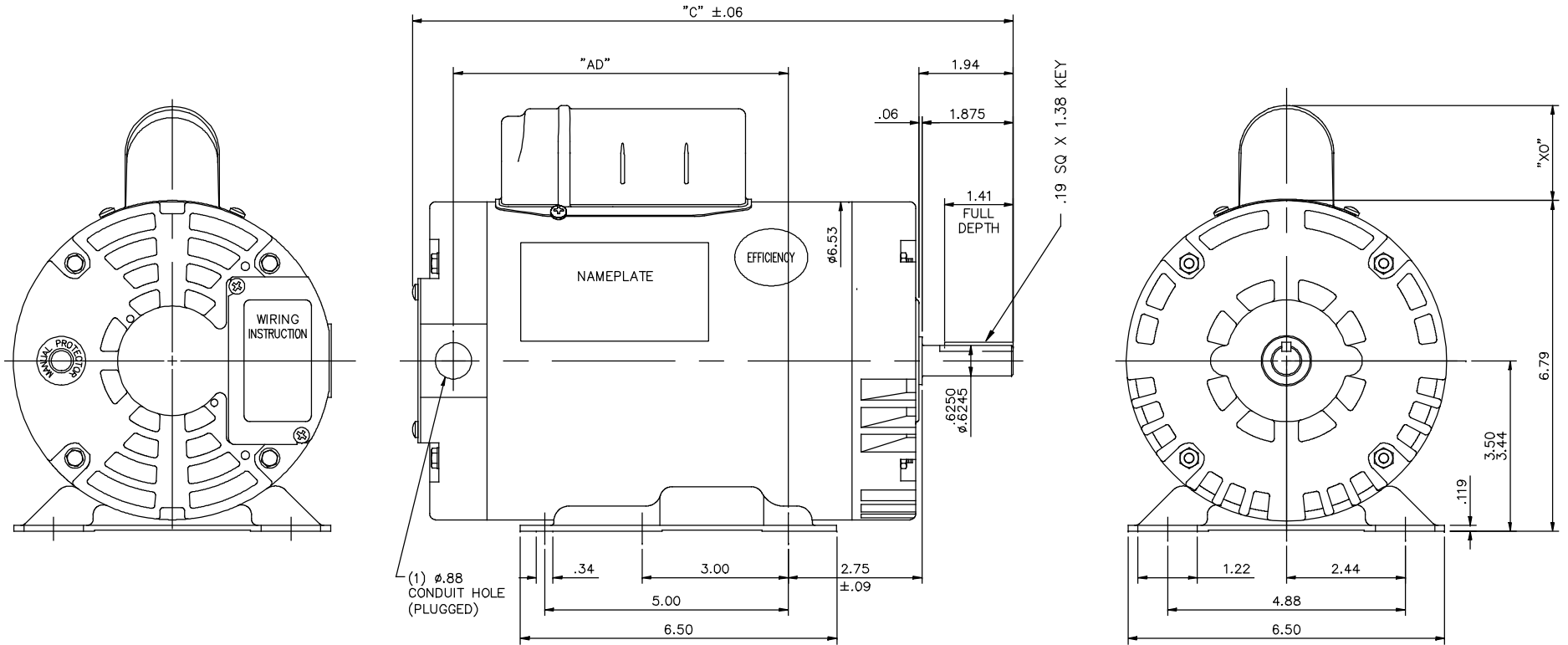
Output HP	<b>3 Hp</b>	Output KW	<b>2.2 kW</b>
Frequency	<b>60 Hz</b>	Voltage	<b>230 V</b>
Current	<b>15.0 A</b>	Speed	<b>3450 rpm</b>
Service Factor	<b>1</b>	Phase	<b>1</b>
Efficiency	<b>76 %</b>	Power Factor	<b>90</b>
Duty	<b>Continuous</b>	Insulation Class	<b>F</b>
Design Code	<b>L</b>	KVA Code	<b>G</b>
Frame	<b>56H</b>	Enclosure	<b>Drip Proof</b>
Thermal Protection	<b>Manual</b>	Ambient Temperature	<b>40 °C</b>
Drive End Bearing Size	<b>6205</b>	Opp Drive End Bearing Size	<b>6203</b>
UL	<b>Recognized</b>	CSA	<b>Y</b>
CE	<b>N</b>	IP Code	<b>22</b>
Number of Speeds	<b>1</b>		

### Technical Specifications

Electrical Type	<b>Capacitor Start Induction Run</b>	Starting Method	<b>Across The Line</b>
Poles	<b>2</b>	Rotation	<b>Selective Clockwise</b>
Resistance Main	<b>.86 Ohms</b>	Mounting	<b>Rigid Base</b>
Motor Orientation	<b>Horizontal</b>	Drive End Bearing	<b>Ball</b>
Opp Drive End Bearing	<b>Ball</b>	Frame Material	<b>Rolled Steel</b>
Shaft Type	<b>NEMA 56</b>	Overall Length	<b>12.38 in</b>
Frame Length	<b>7.50 in</b>	Shaft Diameter	<b>0.625 in</b>
Shaft Extension	<b>1.88 in</b>	Assembly/Box Mounting	<b>F1 ONLY</b>
Outline Drawing	<b>028705-750B</b>	Connection Drawing	<b>005028.03</b>

This is an uncontrolled document once printed or downloaded and is subject to change without notice. Date Created:11/28/2022

028705

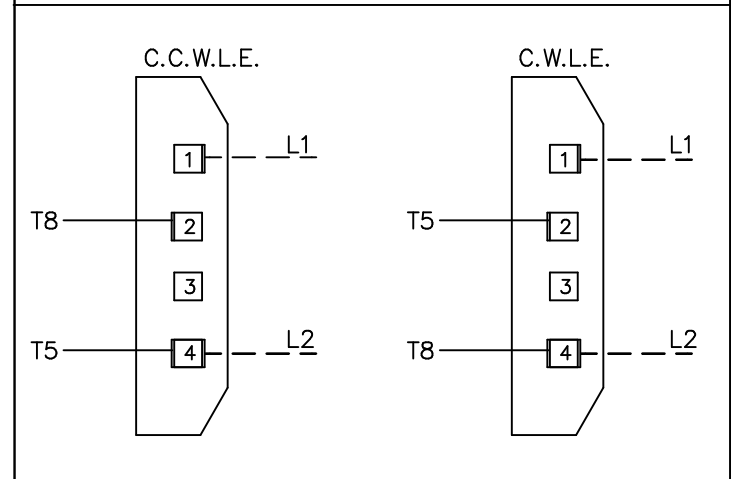
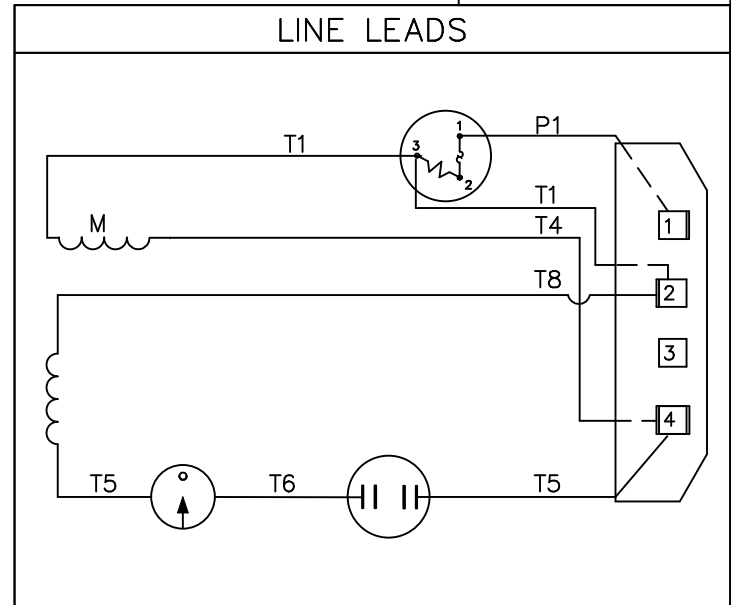
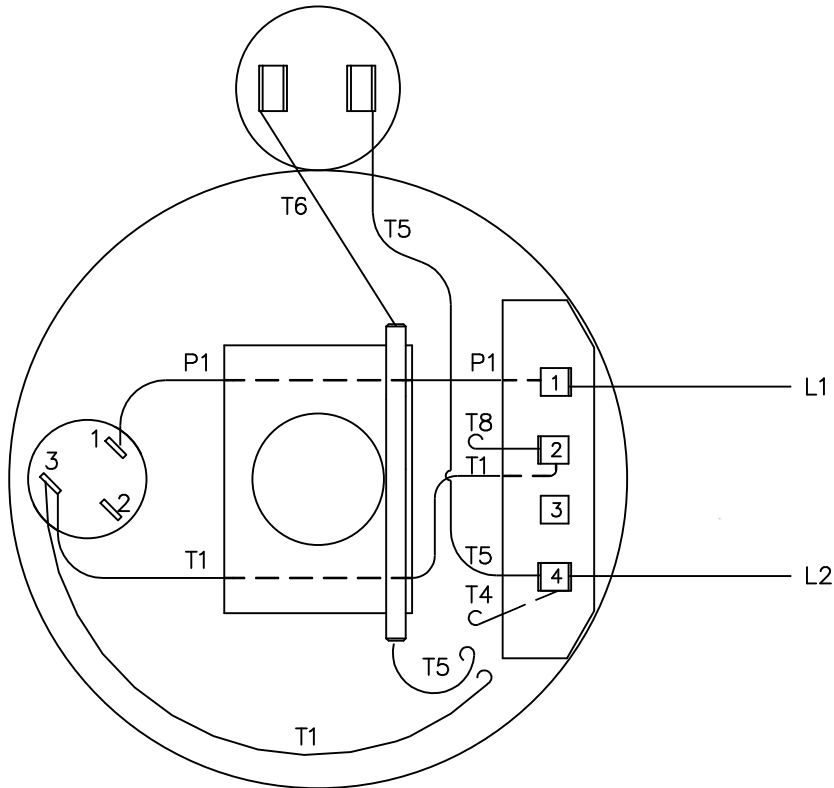


DASH NO.	"C"	"AD"	CAP. DASH	"XO"
650	11.38	5.88	A	1.48
700	11.88	6.38	B	1.95
750	12.38	6.88	C	2.19
800	12.88	7.38		

ORACLE REV.
001

TOLERANCES UNLESS SPECIFIED		REGAL™ Regal Beloit America, Inc.		DRAWN	RDW 8/13/05
	DEC. INCHES			CHK	
	.X ±.1			APPD	SW 8/15/05
	.XX ±.03		TITLE	SCALE	1=2
	.XXX ±.005		OUTLINE- 56H FRAME	REF	028550
	.XXX ±.005		DRIP PROOF- RIGID	FMF	
	.XXX ±.005		COMPRESSOR DUTY	PREV	
01	NAMEPLATE WAS METAL	AS	08/29/17	AS	
	REVISION		BY & DATE	CHK	
				ANG	
				RFP	8/15/05
THIS DRAWING IN DESIGN AND DETAIL IS OUR PROPERTY AND MUST NOT BE USED EXCEPT IN CONNECTION WITH OUR WORK. ALL RIGHTS OF DESIGN AND INVENTION ARE RESERVED. THIS IS AN ELECTRONICALLY GENERATED DOCUMENT - DO NOT SCALE THIS PRINT				CAD FILE	028705
				SIZE	DRAWING NO.
				B	028705
					REV.
					01

VIEW FROM OUTSIDE OF MOTOR AT SWITCH END.



				TOLERANCES UNLESS OTHERWISE SPECIFIED		<b>LEESON</b> ELECTRIC CORPORATION	
				DECIMALS			
				.00	± .01	DRAWN WLW 06/24/77	TITLE
				.000	± .005	CH'K'D. TEM	EXTERNAL WIRING DIAGRAM
03	REDRAWN ON CAD	DBT	06/16/97	.0000	± .0005	APPR. 06/29/77	TYPE "C" W/ PROTECTOR
NO.	REVISION	BY	DATE	FRACTIONS	± 1/64	SCALE 1=1	MAT'L. DECAL - 004112
THIS DRAWING IN DESIGN AND DETAIL IS OUR PROPERTY AND MUST NOT BE USED EXCEPT IN CONNECTION WITH OUR WORK ALL RIGHTS OF DESIGN AND INVENTION ARE RESERVED				ANGLES	± 1/2°	REF. C4G	FINISH
				INCH/MM		FMF A4C17DR20	SIZE A
						DRAWING NO. 005028-03	



1051 CHEYENNE AVE.  
GRAFTON, WI 53024  
PH. 262-377-8810

**CERTIFICATION DATA SHEET**

**CATALOG #:** 116706.00

**CONN. DIAGRAM:** 005028.03

**OUTLINE:** 028705-750B

**MOUNTING:** F1 ONLY

**WINDING #:** C632214 2 C

**TYPICAL MOTOR PERFORMANCE DATA**

HP	kW	SYNC. RPM	F.L. RPM	FRAME	ENCLOSURE	KVA CODE	DESIGN
3	2.24	3600	3450	56H	DP	G	L

PH	Hz	VOLTS	AMPS	START TYPE	DUTY	INSL	S.F.	AMB°C
1	60	230	15	ACROSS THE LINE	CONTINUOUS	F4	1.0	40

FULL LOAD EFF:	76	3/4 LOAD EFF:	74.4	1/2 LOAD EFF:	71.4	GTD. EFF	ELEC. TYPE
FULL LOAD PF:	90	3/4 LOAD PF:	82.1	1/2 LOAD PF:	67.7	72	CAP START IND RUN

F.L. TORQUE	LOCKED ROTOR AMPS	L.R. TORQUE	B.D. TORQUE	F.L. RISE°C
4.57 LB-FT	78	8.3 LB-FT 184 %	8.9 LB-FT 198 %	109.6

SOUND PRESSURE @ 3 FT.	SOUND POWER	ROTOR WK^2	MAX. WK^2	SAFE STALL TIME	STARTS / HOUR	APPROX. MOTOR WGT
0 dBA	10 dBA	0.074 LB-FT^2	0.1 LB-FT^2	0 SEC.	0	39 LBS.

**\*\*\* SUPPLEMENTAL INFORMATION \*\*\***

DE BRACKET TYPE	ODE BRACKET TYPE	MOUNT TYPE	ORIENTATION	SEVERE DUTY	HAZARDOUS LOCATION	DRIP COVER	SCREENS	PAINT
STANDARD	STANDARD	RIGID	HORIZONTAL	FALSE	NONE	FALSE	NONE	BEIGE - LEESON (ENAMEL)

BEARINGS		GREASE	SHAFT TYPE	SPECIAL DE	SPECIAL ODE	SHAFT MATERIAL	FRAME MATERIAL
DE	ODE						
BALL	BALL	POLYREX EM	STANDARD 56	VERIFY	VERIFY	1144 STRESSPROOF (C-223)	ROLLED STEEL
6205	6203						

THERMO-PROTECTORS				THERMISTORS	CONTROL	SPACE HEATERS
THERMOSTATS	PROTECTORS	WDG RTDs	BRG RTDs			
NONE	MANUAL	NONE	NONE	NONE	FALSE	NONE VOLTS

\*  
N  
O  
T  
E  
S  
\*

<b>INVERTER TORQUE:</b> NONE
<b>INV. HP SPEED RANGE:</b> NONE
<b>ENCODER:</b> NONE NONE NONE NONE NONE PPR
<b>BRAKE:</b> NONE NONE NONE P/N NONE NONE NONE NONE FT-LB NONE V NONE Hz



**LEESON ELECTRIC CORPORATION**  
 TYPICAL PERFORMANCE CURVE for AC MOTOR

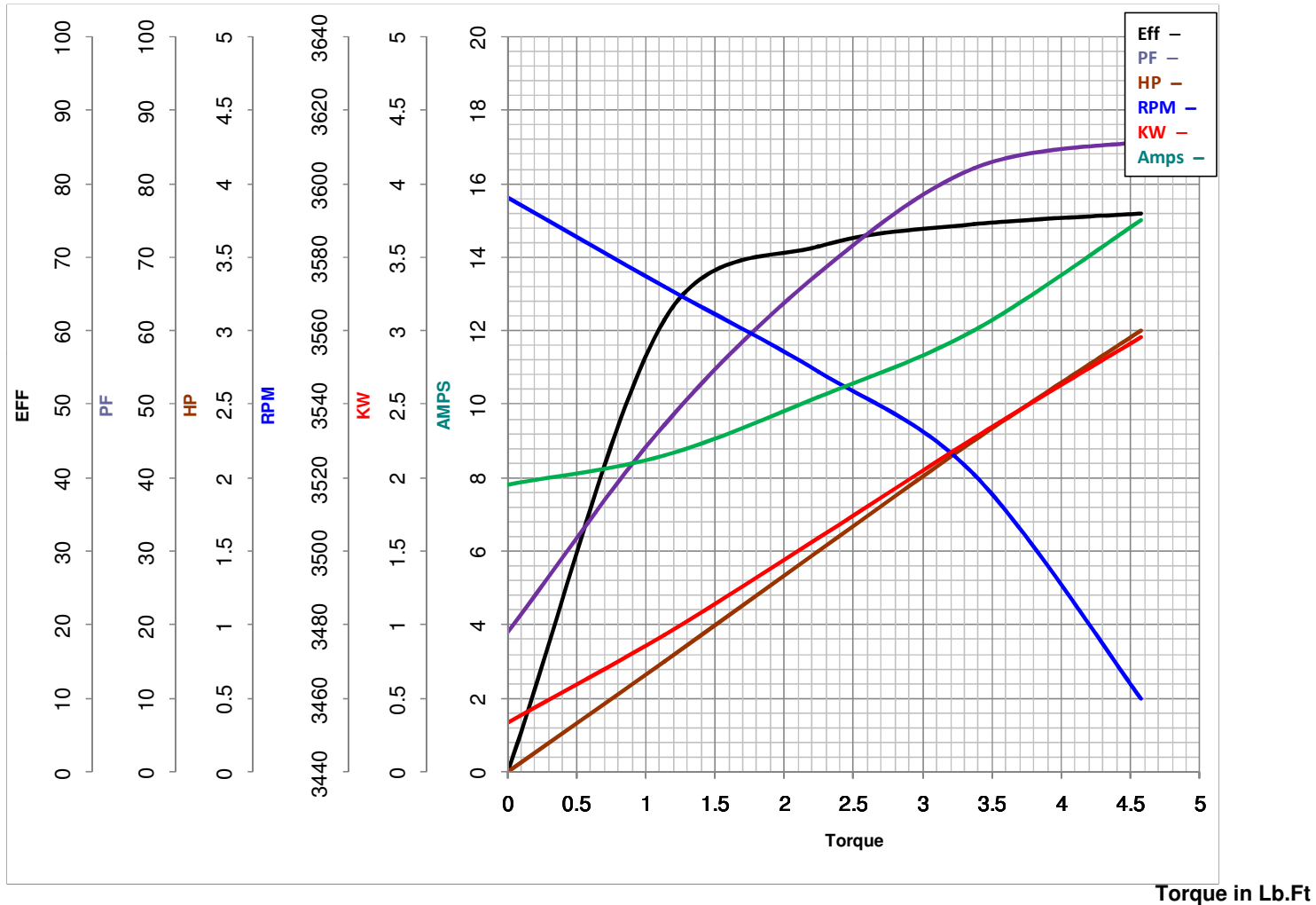
Curve at 230 Volts      HP 3.00      PHASE 1  
60 HZ  
3 HP      VOLTS 230

Model No 116706.00

Catalog No 116706.00

HZ 60

RPM 3450



FL TORQUE	<u>4.57</u>	Lb.Ft	FL AMPS	<u>15</u>	
BD TORQUE	<u>8.9</u>	Lb.Ft	PU TORQUE	<u>7.8</u>	Lb.Ft
LR TORQUE	<u>8.3</u>	Lb.Ft	LR AMPS	<u>78</u>	
WINDING	C632214-2		Date	<u>3/14/2018</u>	