

# PRODUCT INFORMATION PACKET



Model No: 098375.00

Catalog No: 098375.00

1/4HP.1750RPM.MSS56C.TENV.180V.CONT.40C.1.0SF.RIGID C.DC WASHGUARD.C42D17VK1A  
Washdown Motors



Regal and Leeson are trademarks of Regal Rexnord Corporation or one of its affiliated companies.  
©2021 Regal Rexnord Corporation, All Rights Reserved. MC017097E





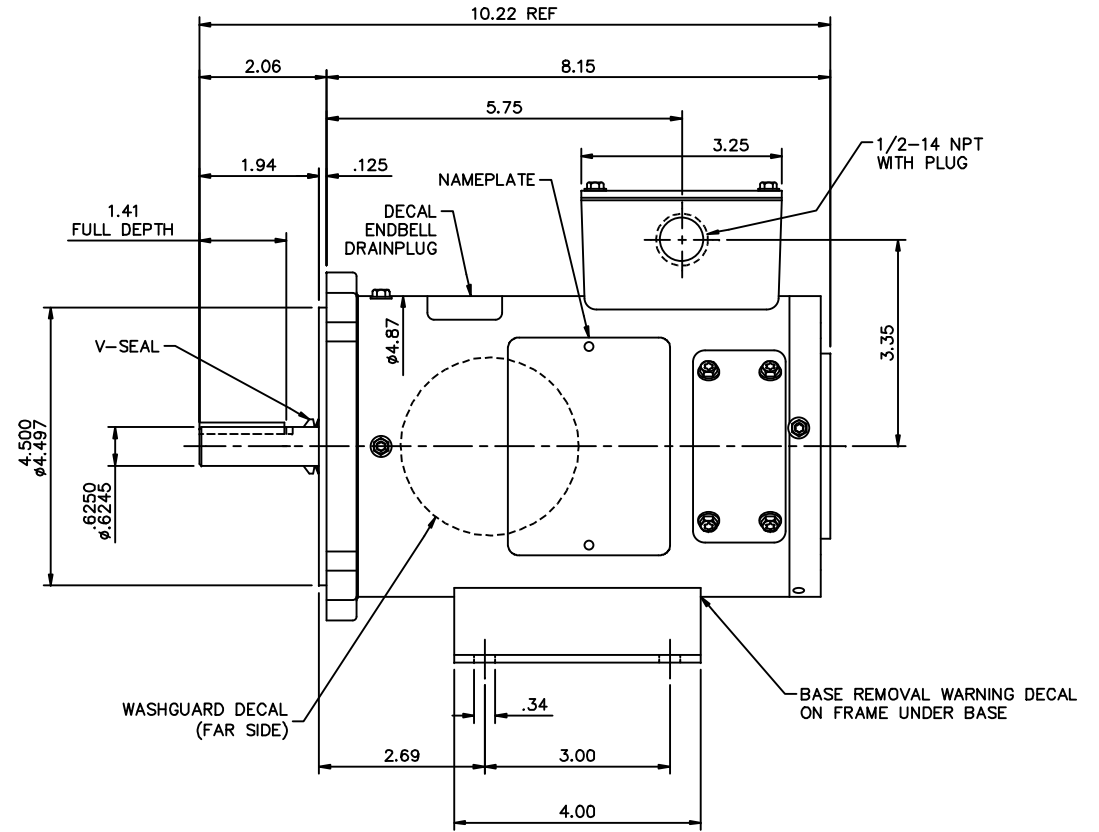
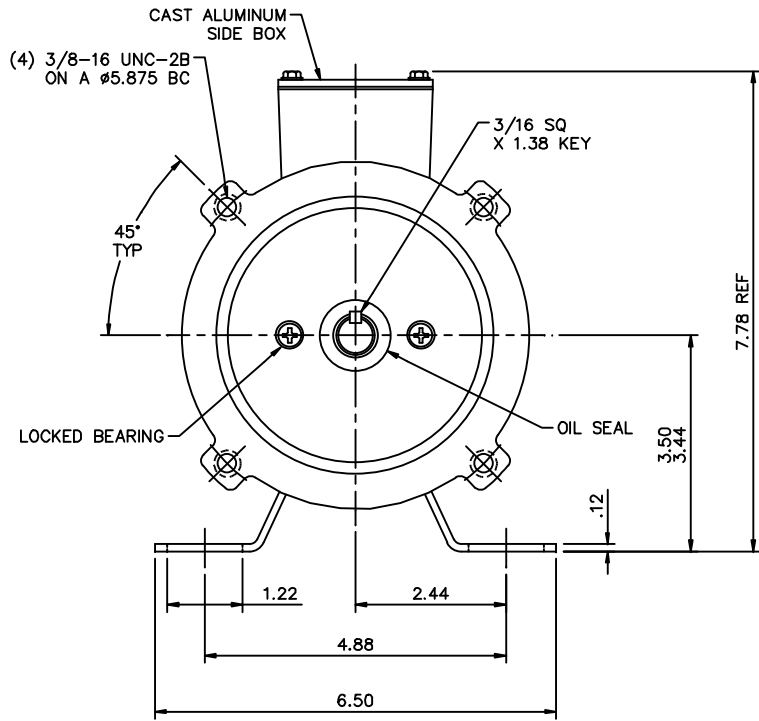
**Nameplate Specifications**

Output HP	<b>0.25 Hp</b>	Output KW	<b>0.19 kW</b>
Voltage	<b>180 V</b>	Current	<b>1.4 A</b>
Speed	<b>1750 rpm</b>	Service Factor	<b>1</b>
Efficiency	<b>77.1 %</b>	Duty	<b>Continuous</b>
Insulation Class	<b>F</b>	Frame	<b>MSS56C</b>
Enclosure	<b>Totally Enclosed Non Ventiladed</b>	Thermal Protection	<b>No</b>
Ambient Temperature	<b>40 °C</b>	Drive End Bearing Size	<b>6203</b>
Opp Drive End Bearing Size	<b>6203</b>	UL	<b>Recognized</b>
CSA	<b>Y</b>	CE	<b>N</b>

**Technical Specifications**

Rotation	<b>Reversible</b>	Mounting	<b>Rigid C base</b>
Overall Length	<b>10.22 in</b>	Frame Length	<b>7.00 in</b>
Shaft Diameter	<b>0.625 in</b>	Shaft Extension	<b>2.06 in</b>
Torque	<b>9.0 LB-IN</b>		
Connection Drawing	<b>00531901</b>	Outline Drawing	<b>027878-098375</b>

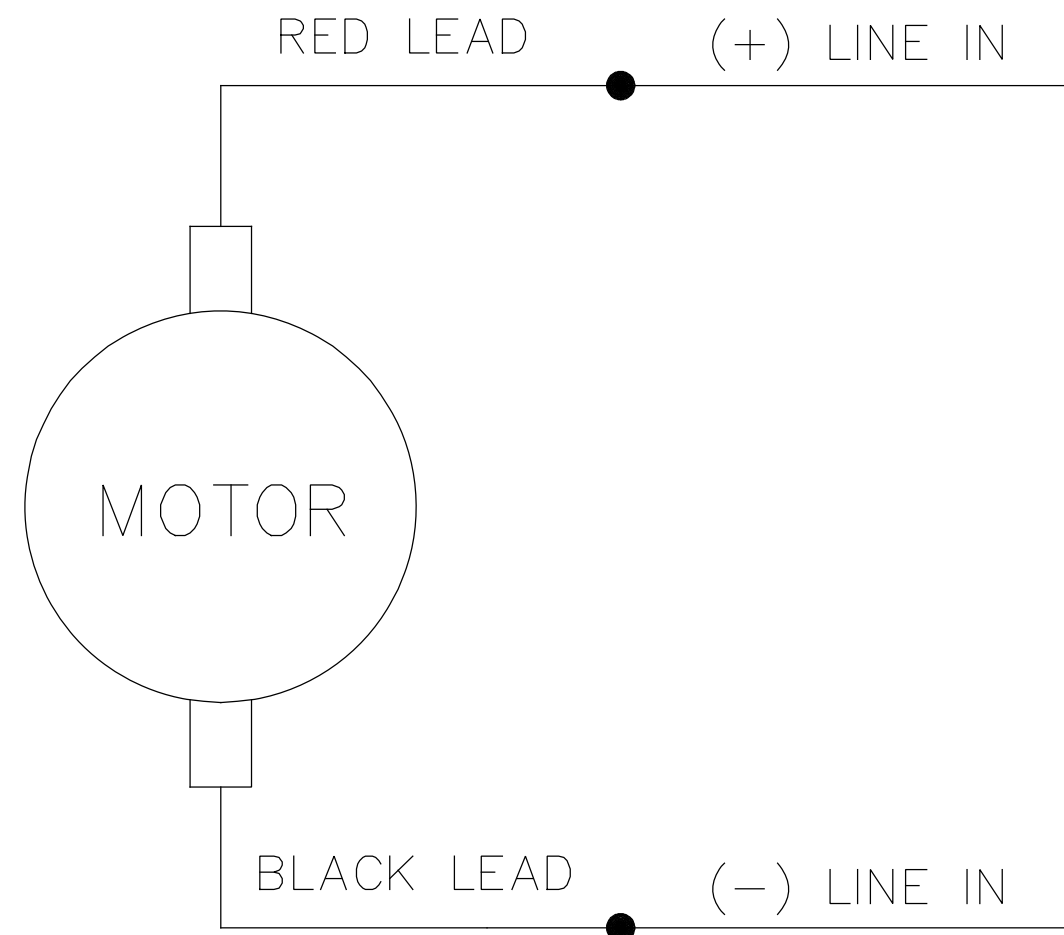
This is an uncontrolled document once printed or downloaded and is subject to change without notice. Date Created:10/11/2021



NOTES:

- 1) MAXIMUM FACE RUNOUT TO BE .004 T.I.R.
- 2) MAXIMUM PILOT ECCENTRICITY TO BE .004 T.I.R.
- 3) PERMISSIBLE SHAFT RUNOUT TO BE .002 T.I.R.
- 4) GASKETS THROUGHOUT
- 5) DRAIN HOLES PLUGGED AT 3, 9 AND 12 O'CLOCK. HOLES AT 6 O'CLOCK ARE OPEN (BOTH ENDS)

		TOLERANCES UNLESS SPECIFIED				DRAWN IPG 7/11/05				
		DEC.	INCHES			CHK	SAD 7/11/05			
02	CORRECTED MOUNTING IN TITLE BLOCK ISAAC 12-4380	GWS	9/11/12	.X	±.1	APPD				
01	MOVED 12 O'CLOCK FRAME DRAIN HOLE ON SHAFT END	IPG	12/4/07	BC	±.03	SCALE 1-2				
	10 DEGREES FROM THE TOP, ECR 91252			.XXX	±.005	REF PRO40580				
00	RELEASED: REF. PRO40580	IPG	7/11/05	SAD	.XXXX ±.0005	MAT'L FMF 098378.00				
NO.	REVISION	BY & DATE	CHK	ANG	±1/2'	FINISH PREV				
THIS DRAWING IN DESIGN AND DETAIL IS OUR PROPERTY AND MUST NOT BE USED EXCEPT IN CONNECTION WITH OUR WORK ALL RIGHTS OF DESIGN AND INVENTION ARE RESERVED THIS IS AN ELECTRONICALLY GENERATED DOCUMENT - DO NOT SCALE THIS PRINT				RFP		CAD FILE	027878	SIZE	DRAWING NO.	REV.
				DIST		B	027878.00		02	



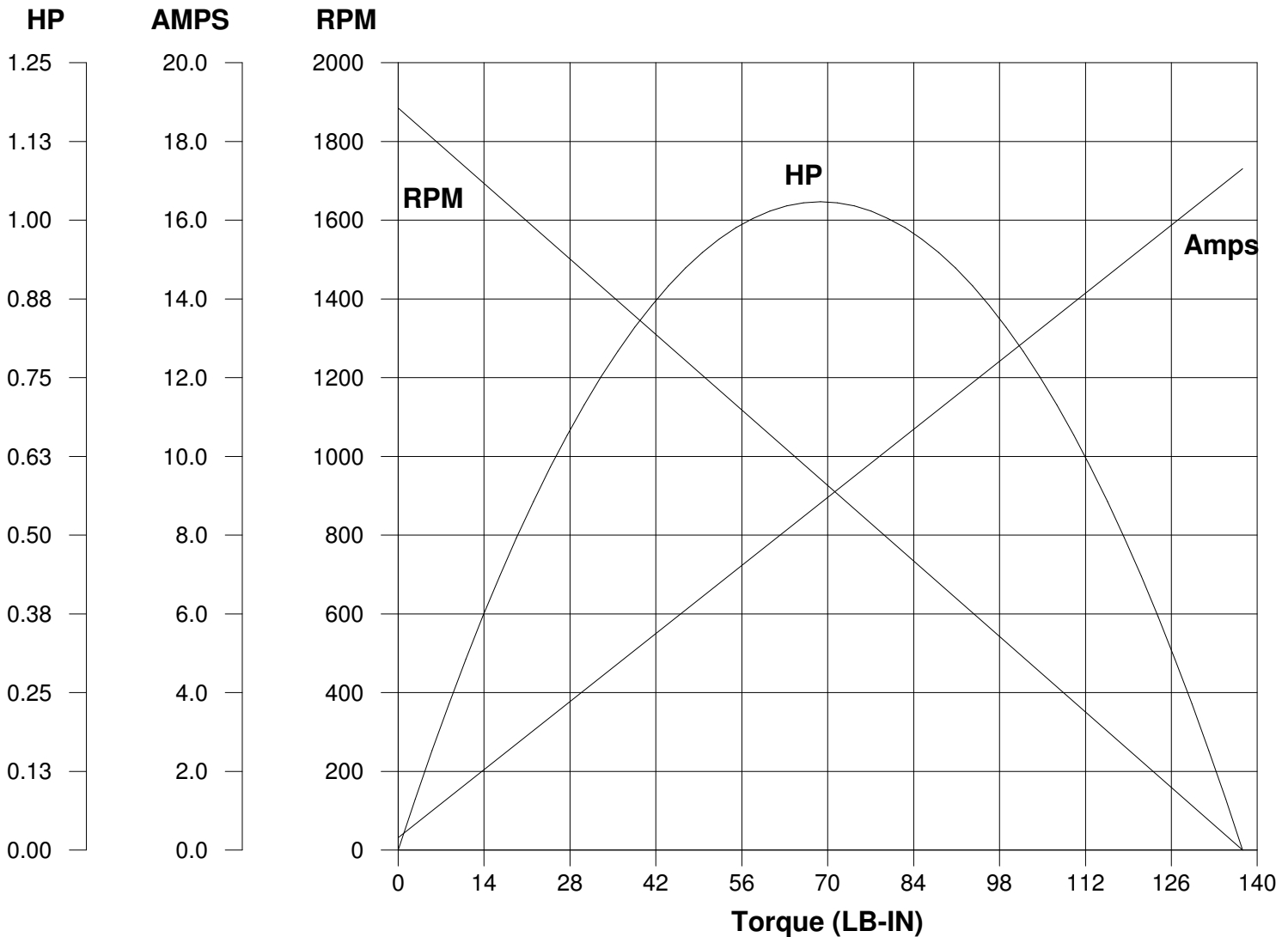
CONNECTIONS SHOWN FOR CCW ROTATION FACING LEAD END OF THE MOTOR  
 TO REVERSE ROTATION INTERCHANGE LINE LEADS

NO.	REVISION	BY & DATE	CHK	TOLERANCES UNLESS SPECIFIED		LEESON	ELECTRIC MOTORS GEARMOTORS AND DRIVES	DRAWN TJF 11/15/97	
				DEC.	INCHES				CHK
				.X	±.1			APPD POW 11/15/97	
E	"MOTOR" WAS "ARMATURE", ECO-0163602	IPG 3/14/19		.XX	±.01	TITLE	EXTERNAL WIRING DIAGRAM PMDC MOTOR	SCALE 1=2	
D	UPDATED TO MAKE IT GENERIC, ECO-0163547	IPG 3/13/19		.XXX	±.005			REF	
01	REDRAWN ON CAD. REVISED NOTES.	SJB 9/20/2005		.XXXX	±.0005	MAT'L.		FMF	
				ANG	±1/2°	FINISH		PREV	
THIS DRAWING IN DESIGN AND DETAIL IS OUR PROPERTY AND MUST NOT BE USED EXCEPT IN CONNECTION WITH OUR WORK ALL RIGHTS OF DESIGN AND INVENTION ARE RESERVED THIS IS AN ELECTRONICALLY GENERATED DOCUMENT - DO NOT SCALE THIS PRINT				RFP	CAD FILE 00531901		SIZE A	DRAWING NO. 005319.01	REV. E
				DIST					

# LEESON ELECTRIC CORPORATION

## TYPICAL PERFORMANCE CURVE FOR DIRECT CURRENT PERMANENT MAGNET MOTOR

<b>Model No.</b> <u>C4D17VK1</u>	<b>Catalog No.</b> <u>098375.00</u>	
<b>HP</b> <u>0.250</u>	<b>RPM</b> <u>1750</u>	<b>DC Volts</b> <u>180.0</u>
<b>F.F.</b> <u>1.38</u>	<b>Encl</b> <u>TENV</u>	<b>N.P. FLA</b> <u>1.40</u>
<b>Max. Amb.</b> <u>40.0 Deg C</u>	<b>Insul.</b> <u>F</u>	<b>Type</b> <u>DN</u>
	<b>Frame</b> <u>MSS56C</u>	<b>S.F.</b> <u>1.00</u>
		<b>Duty</b> <u>CONT</u>



<b>Ra</b>	<u>5.1700</u>	Ohms
<b>La</b>	<u>65.38</u>	mHenrys
<b>Ja</b>	<u>6.250</u>	LB-IN <sup>2</sup>
<b>Ke</b>	<u>93.64</u>	V/KRPM

<b>Kt</b>	<u>7.915</u>	LB-IN/AMP
<b>Imax</b>	<u>28.0</u>	AMPS Allowed
<b>FL Torque</b>	<u>9.000</u>	LB-IN
<b>FL EFF</b>	<u>77.10</u>	%

**Winding W-** D47210-1      **Prepared by** V. Boehlen      **Date** 09-21-2005