

PRODUCT INFORMATION PACKET

Model No: 056C17W5326
Catalog No: N531
1/3,1725,TEFC,56C,1/60/115/208-230
Washdown Duty



Regal and Marathon are trademarks of Regal Beloit Corporation or one of its affiliated companies.

©2018 Regal Beloit Corporation, All Rights Reserved. MC017097E





Nameplate Specifications

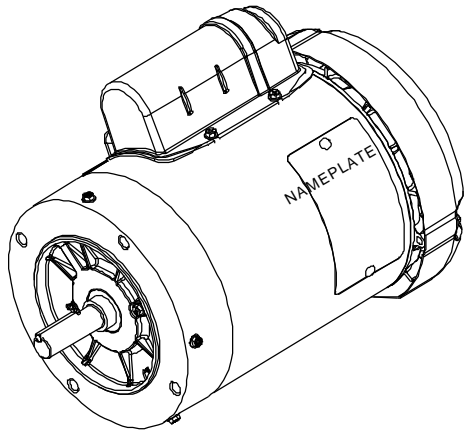
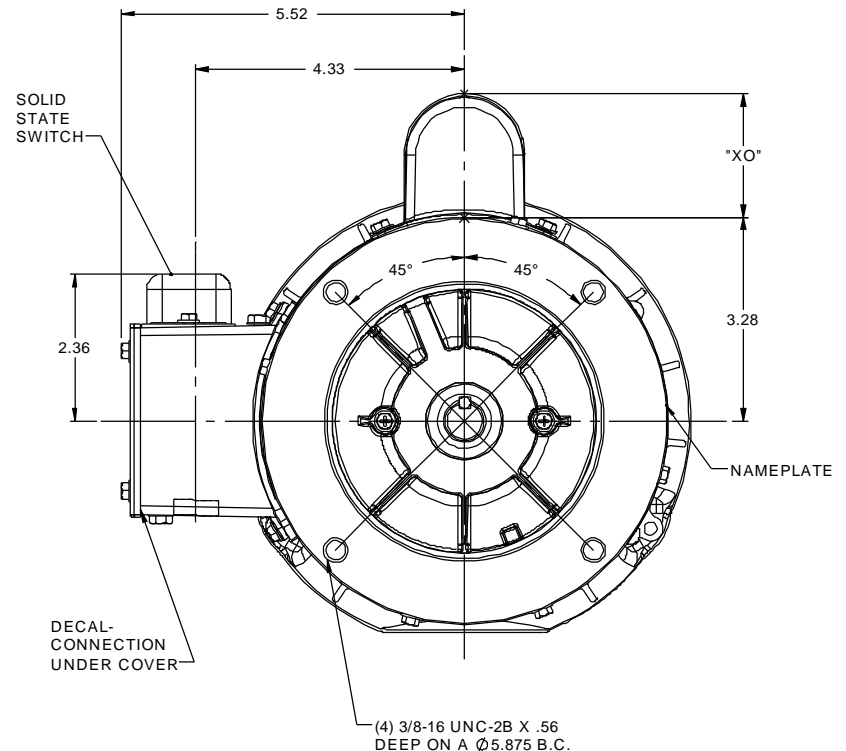
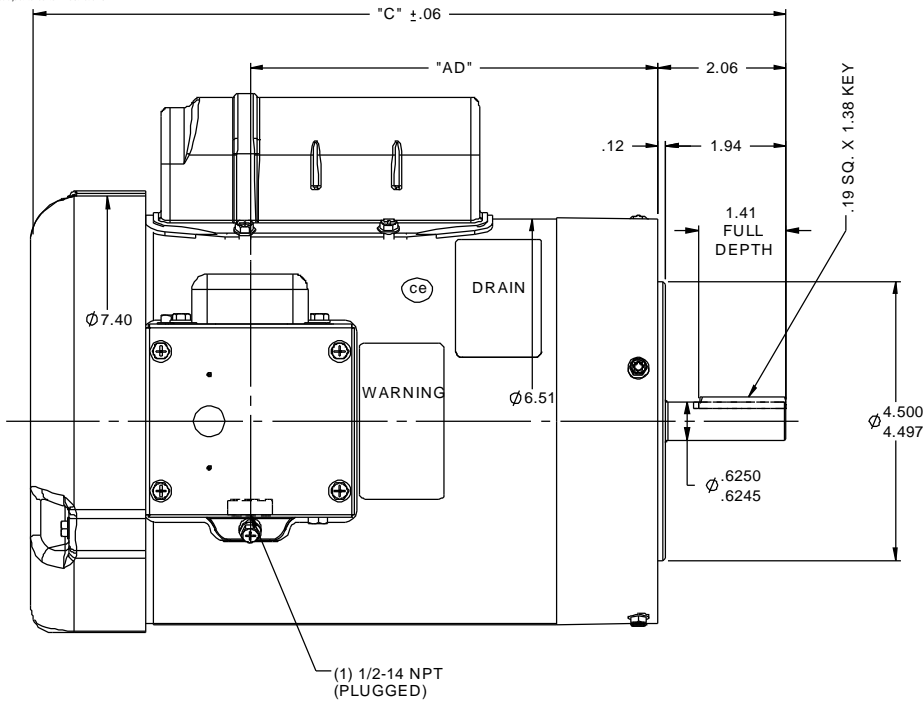
Output HP	0.33 Hp	Output KW	0.25 kW
Frequency	60 Hz	Voltage	115/208-230 V
Current	6.4/3.4-3.2 A	Speed	1725 rpm
Service Factor	1.15	Phase	1
Efficiency	62 %	Duty	Continuous
Insulation Class	F	Design Code	L
KVA Code	M	Frame	56C
Enclosure	Totally Enclosed Fan Cooled	Overload Protector	No
Ambient Temperature	40 °C	Drive End Bearing Size	6205
Opp Drive End Bearing Size	6203	UL	Recognized
CSA	Y	CE	Y
IP Code	55		

Technical Specifications

Electrical Type	Capacitor Start Induction Run	Starting Method	Across The Line
Poles	4	Rotation	Selective Counterclockwise
Mounting	Round	Motor Orientation	Horizontal
Drive End Bearing	Ball	Opp Drive End Bearing	Ball
Frame Material	Rolled Steel	Shaft Type	NEMA 56
Overall Length	10.16 in	Frame Length	4.50 in
Shaft Diameter	0.625 in	Shaft Extension	2.06 in
Assembly/Box Mounting	F1 Only		
Outline Drawing	028944-450	Connection Diagram	005278.07ME

This is an uncontrolled document once printed or downloaded and is subject to change without notice. Date Created: 06/28/2018

RBC PROPRIETARY AND CONFIDENTIAL INFORMATION
 This document is the property of REGAL BELOIT CORPORATION ("RBC") including its subsidiaries and divisions and contains proprietary information of RBC. This document is loaned on the express condition that neither the information contained therein shall be disclosed to others without the express written consent of RBC, and that the information shall be used by the recipient only as approved expressly by RBC. This document shall be returned to RBC upon its request. This document may be subject to certain restrictions under U.S. export control laws and regulations.



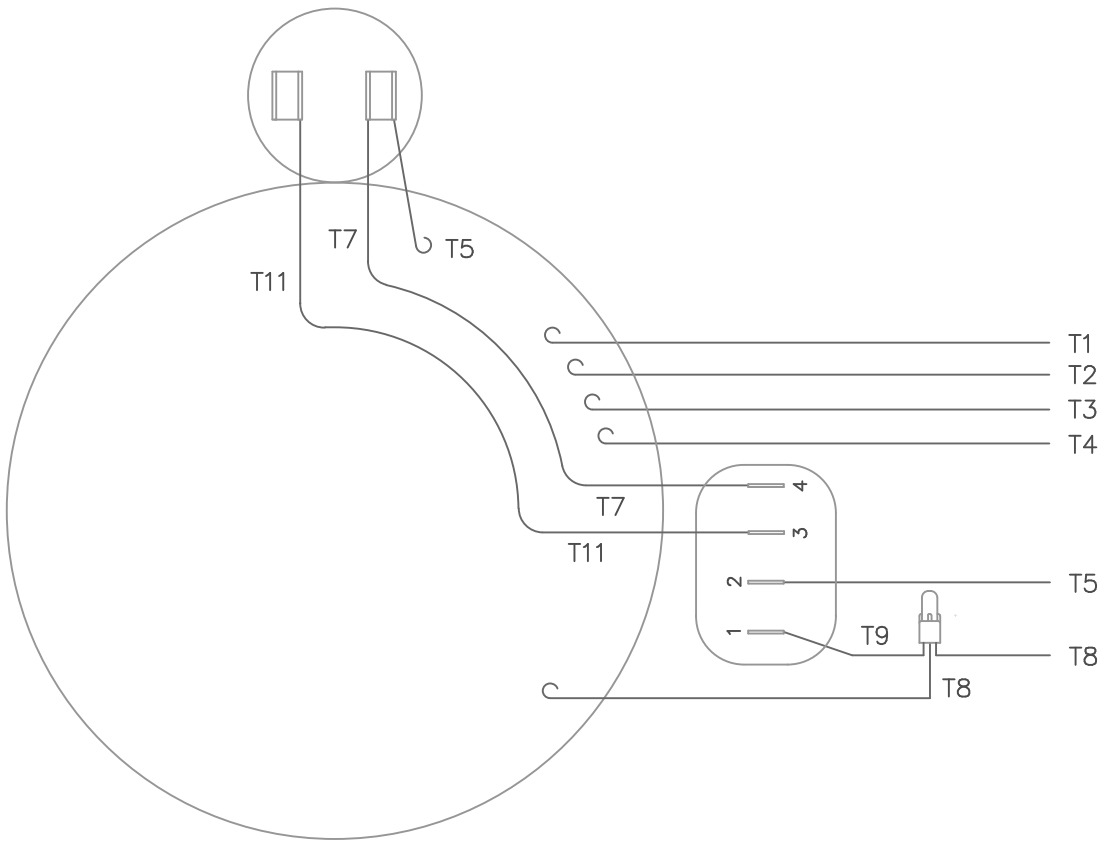
DASH NO.	"C"	"AD"
450	10.16	4.56
500	10.66	5.06
550	11.16	5.56
600	11.66	6.06
650	12.16	6.56
700	12.66	7.06

CAP. DASH	"XO"
A	1.54
B	2.01
C	2.25

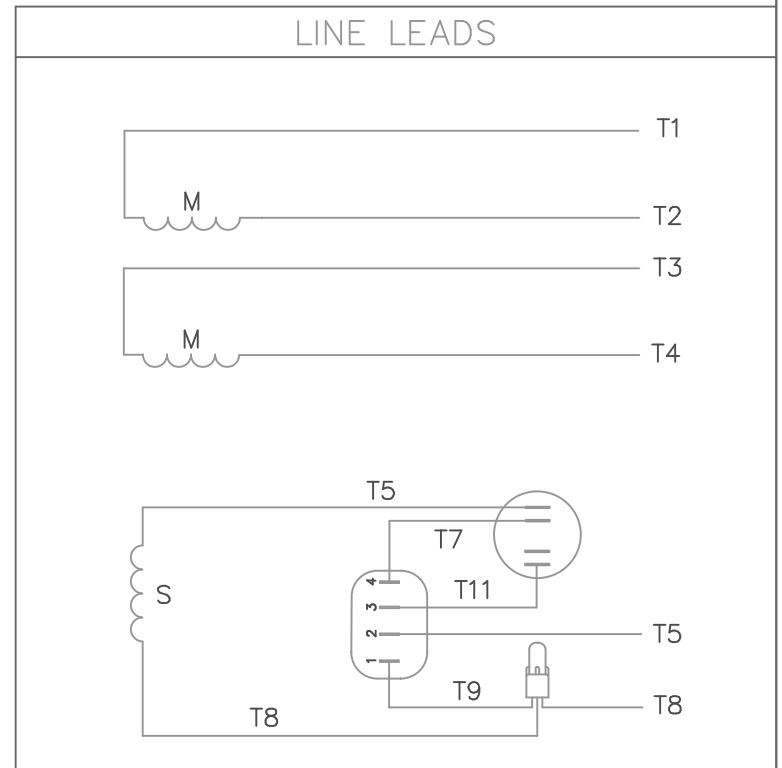
SPECIAL FEATURES:
 1) SHAFT SEALS & V-RING
 2) DRAIN HOLES IN BOTH ENDBELLS & CONDUIT BOX
 3) GASKETS THROUGHOUT
 4) STAINLESS STEEL SHAFT, HARDWARE, & NAMEPLATE

MAXIMUM FACE RUNOUT .004 T.I.R.
 MAXIMUM PILOT ECCENTRICITY .004 T.I.R.
 PERMISSIBLE SHAFT RUNOUT .002 T.I.R.

		TOLERANCES UNLESS SPECIFIED				DRAWN LST 1/19/09	
		DEC	INCHES			CHK	
		X	±.1	APPR		SCALE 1:2	
		XX	±.03	REF		TITLE OUTLINE - 56C FRAME	
		XXX	±.005	FMF		TEFC - "C" FACE	
01	UPDATED PER ECR 0034519	LST	4/26/2013	XX	XXXX	MAT'L	
NO	REVISION	BY & DATE	CHK	ANG	±1/2°	FINISH	PAGE OF
		RFP	PREV			SIZE	DRAWING NO
		THIRD ANGLE PROJECTION		NETWORK FILE NAME 028944		B	028944
						REV	01



VIEW FROM OUTSIDE OF MOTOR AT SWITCH END.



	ROTATION FACING LEAD END	L1	L2	JOIN & INSULATE
HIGH VOLT	C.C.W.	T1	T4 T5	T2,T3 T8
	C.W.	T1	T4 T8	T2,T3 T5
LOW VOLT	C.C.W.	T1,T3 T8	T2,T4 T5	
	C.W.	T1,T3 T5	T2,T4 T8	

		TOLERANCES UNLESS SPECIFIED				DRAWN LST 1/19/09			
		DEC.	INCHES			CHK			
		.X	±.1			APPD			
		.XX	±.01			SCALE 1=1			
		.XXX	±.005			REF			
		.XXXX	±.0005	MAT'L. DECAL - 004012		FMF			
NO.	REVISION	BY & DATE	CHK	ANG	±1/2'	PREV			
THIS DRAWING IN DESIGN AND DETAIL IS OUR PROPERTY AND MUST NOT BE USED EXCEPT IN CONNECTION WITH OUR WORK ALL RIGHTS OF DESIGN AND INVENTION ARE RESERVED THIS IS AN ELECTRONICALLY GENERATED DOCUMENT - DO NOT SCALE THIS PRINT			RFP	CAD FILE 00527807ME		SIZE A	DRAWING NO. 005278-07ME	PAGE OF	REV.
			DIST						

CERTIFICATION DATA SHEET

Model#: 56C17W5326 A **WINDING#:** C634260 FR 3
CONN. DIAGRAM: 005278.07ME **ASSEMBLY:** F1 ONLY
OUTLINE: 028944-450

TYPICAL MOTOR PERFORMANCE DATA

HP	KW	SYNC. RPM	F.L. RPM	FRAME	ENCLOSURE	KVA CODE	DESIGN			
1/3	0.25	1800	1725	56C	TEFC	M	L			
PH	Hz	VOLTS	FL AMPS	START TYPE	DUTY	INSL	S.F	AMB°C	ELEVATION	
1	60	115/208-230	6.4/3.4-3.2	ACROSS THE LINE	CONTINUOUS	F4	1.15	40	3300	
FULL LOAD EFF: 62		3/4 LOAD EFF: 57.3		1/2 LOAD EFF: 47.4		GTD. EFF		ELEC. TYPE		NO LOAD AMPS
FULL LOAD PF: 55		3/4 LOAD PF: 49		1/2 LOAD PF: 41.5		0		CAP START IND RUN		5.4 / 2.7
F.L. TORQUE		LOCKED ROTOR AMPS		L.R. TORQUE		B.D. TORQUE		F.L. RISE°C		
16 LB-FT		30.8 / 15.4		60.5 LB-FT 378		49.6 LB-FT 310		0		
SOUND PRESSURE @ 3 FT.	SOUND POWER	ROTOR WK^2	MAX. WK^2	SAFE STALL TIME	STARTS /HOUR	APPROX. MOTOR WGT				
53 dBA	63 dBA	0.05 LB-FT^2	- LB-FT^2	10 SEC.	-	0 LBS.				

***** SUPPLEMENTAL INFORMATION *****

DE BRACKET TYPE	ODE BRACKET TYPE	MOUNT TYPE	ORIENTATION	SEVERE DUTY	HAZARDOUS LOCATION	DRIP COVER	SCREENS	PAINT
C-FACE	STANDARD	ROUND	HORIZONTAL	FALSE	NONE	FALSE	NONE	WHITE - LEESON (EPOXY)

BEARINGS		GREASE	SHAFT TYPE	SPECIAL DE	SPECIAL ODE	SHAFT MATERIAL	FRAME MATERIAL
DE	OPE	POLYREX EM	STANDARD 56	NONE	NONE	303 STAINLESS (C-501)	ROLLED STEEL
BALL	BALL						
6205	6203						

THERMO-PROTECTORS				THERMISTORS	CONTROL	SPACE /n HEATERS
THERMOSTATS	PROTECTORS	WDG RTDs	BRG RTDs	NONE	FALSE	NONE VOLTS
NONE	NOT	NONE	NONE			

If Inverter equals NONE, contact factory for further information

INVERTER TORQUE: NONE
INV. HP SPEED RANGE: NONE
ENCODER: NONE
NONE NONE
NONE NONE PPR
BRAKE: NONE NONE
NONE P/N NONE
NONE NONE
NONE FT-LB NONE V NONE Hz

*
N
O
T
E
S
*

DATE: 06/27/2017 07:27:35 AM
FORM 3531 REV.3 02/07/99
** Subject to change without notice.