

PRODUCT INFORMATION PACKET

Model No: 5KH39QN9632
Catalog No: H130
1/2-1/6,1725/1140,DP,56,1/60/115
Fan and Blower



Regal and Marathon are trademarks of Regal Beloit Corporation or one of its affiliated companies.
©2018 Regal Beloit Corporation, All Rights Reserved. MC017097E

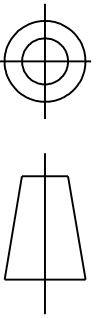
Nameplate Specifications

Output HP	1/2-1/6 Hp	Output KW	0.37 kW
Frequency	60 Hz	Voltage	115 V
Current	8.4,4.8 A	Speed	1725/1140 rpm
Service Factor	1	Phase	1
Efficiency	60.1 %	Duty	Continuous
Insulation Class	B	KVA Code	L
Frame	56	Enclosure	Drip Proof
Overload Protector	N/R	Ambient Temperature	40 °C
Drive End Bearing Size	6203	Opp Drive End Bearing Size	6203
UL	Recognized	CSA	Yes
CE	N		

Technical Specifications

Electrical Type	Split Phase	Starting Method	SM
Poles	4	Rotation	Counterclockwise/Clockwise
Mounting	Resilient Base	Motor Orientation	ANY
Drive End Bearing	BALL	Opp Drive End Bearing	BALL
Frame Material	Rolled Steel	Overall Length	10.32 in
Frame Length	6.22 in	Shaft Diameter	0.63 in
Shaft Extension	1.88 in	Thru-bolts Extension	0
Outline Drawing	52A106983P1	Connection Diagram	52A106478AA

This is an uncontrolled document once printed or downloaded and is subject to change without notice. Date Created: 10/08/2018

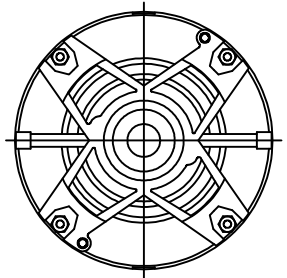


THIRD ANGLE PROJECTION

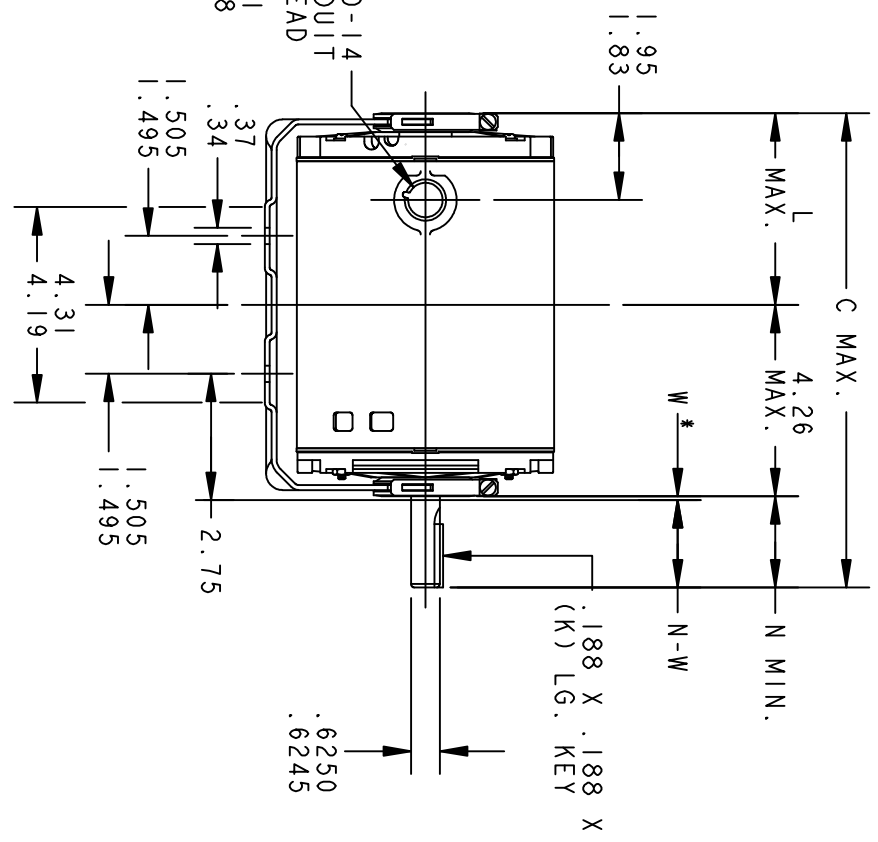
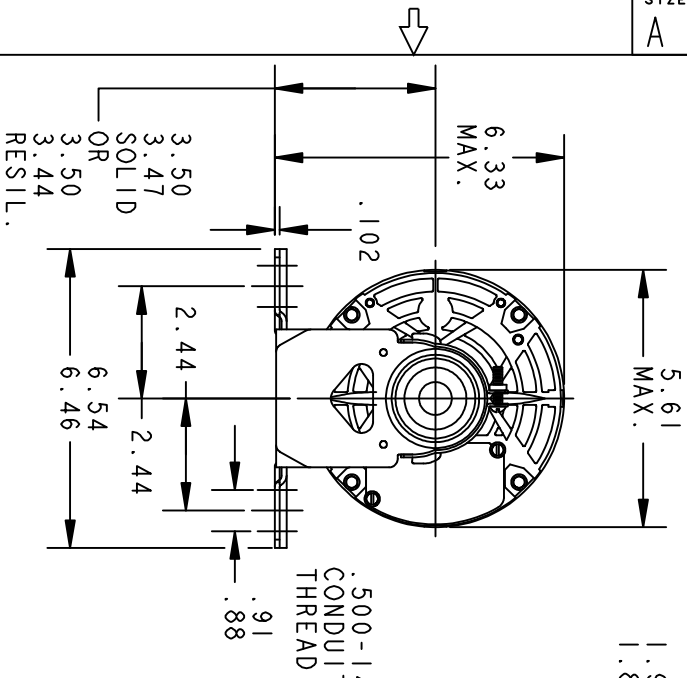
REVISIONS		REV.	DESCRIPTION	DATE	APPROVED
1	REDRAWN WITHOUT CHANGE	1	REDRAWN WITHOUT CHANGE	04/28/92	BLJ
2	REDRAWN BY 2M SOFTWARE CO.	2	REDRAWN BY 2M SOFTWARE CO.	03/05/95	CCP
3	CHG TO RBC FORMAT PER IS05-1777	3	CHG TO RBC FORMAT PER IS05-1777	02/15/06	SUDHA

52A106983 3

SIZE A DRAWING NO.



VIEW SHOWING P. E. VENTILATION OPENINGS



W * IS A CLEARANCE DUE TO VARIATION IN PARTS AND ASSEMBLY.

P	KH	36	56	10.32	1.38	4.23	1.88	2.01/1.79
	TYPE	GE SIZE	NEMA FR	C	K	L	N	N-W



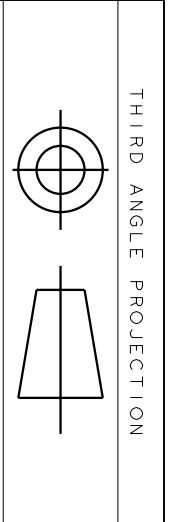
REGAL-BELOIT CORPORATION

OUTLINE

TITLE
FORM N - GENERAL PURPOSE MOTOR - DRIP PROOF -
SOLID OR RESIL. BASE - BALL OR SLEEVE BEARING F.M.F.: 5KH39QW9632

FOR ADDITIONAL INFO REFER TO:	DETAIL	MODEL	M.A.M.	DATE
APPLIED PRACTICES	CHECKED			
DIMENSIONS ARE IN INCHES	ENGRG			
	MFG			
	QUALITY			
	ISSUED	C.C.P.		03/05/95
MATERIAL	SOLID MODEL: 52A106983			

SIZE	DRAWING	SCALE: 0.250	REF. No.:	SHEET 1 OF 1
A				
52A106983	REV 3			



REV.	DESCRIPTION	DATE	APPROVED
5	UPDATED TO RBC FORMAT	01/09/06	MAM

EITHER ROTATION
 SINGLE VOLTAGE
 TYPE KC, KCR, OR KH
 2 SPEED
 POLE CHANGING

T1 OR BLUE

T2 OR WHITE

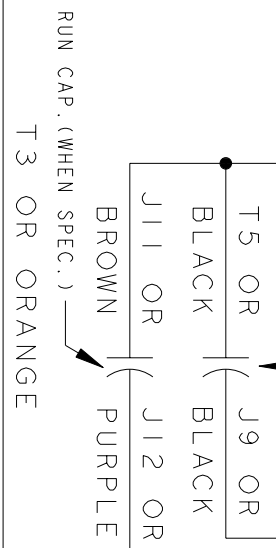
T8 OR RED

MAIN (HI)

MAIN (LO)

START

START CAPACITOR
 FOR KC MOTORS
 ONLY, LEAD T5 OR
 BLACK, CONNECTED
 DIRECTLY TO
 SWITCH FOR KH
 MOTORS



BLACK JUMPER LEAD

NOTE #1 - TO REVERSE ROTATION INTERCHANGE BLUE (T1) AND WHITE (T2) LEADS.
 NOTE #2 - WHEN MORE THAN ONE CAPACITOR IS USED CONNECT IN PARALLEL.

SWITCH (D) - 115D9558BA

CONNECTION LABEL - 52X332073

REF. DIAG. - 121A865

SIGNATURES	DATE
MODEL M.D.P.	12/14/87
DETAIL	
CHECKED	
ENGRG	
MFG	
QUALITY	
ISSUED	M.D.P. 12/14/87
APPLIED PRACTICES	
DIMENSIONS ARE IN INCHES	
MATERIAL	SOLID MODEL: 52A106478AA



REGAL-BELOIT CORPORATION

TITLE CONNECTION DIAGRAM

FMF: 5KH36KN114G

52A106478AA

REV 5

SCALE: 1.000 REF. No.:

SHEET 1 of 1