

PRODUCT INFORMATION PACKET

Model No: 5KH39QN9548
Catalog No: 4322
1/6-1/18,1725/1140,DP,48,1/60/115
Fan and Blower



Regal and Marathon are trademarks of Regal Beloit Corporation or one of its affiliated companies.
©2018 Regal Beloit Corporation, All Rights Reserved. MC017097E

Nameplate Specifications

| | | | |
|------------------------|--------------------|----------------------------|----------------------|
| Output HP | 1/6-1/18 Hp | Output KW | 0.13 kW |
| Frequency | 60 Hz | Voltage | 115 V |
| Current | 3.4,1.9 A | Speed | 1725/1140 rpm |
| Service Factor | 1.35 | Phase | 1 |
| Efficiency | 50.5 % | Duty | Continuous |
| Insulation Class | B | KVA Code | R |
| Frame | 48 | Enclosure | Drip Proof |
| Overload Protector | N/R | Ambient Temperature | 40 °C |
| Drive End Bearing Size | 6203 | Opp Drive End Bearing Size | 6203 |
| UL | Recognized | CSA | Yes |
| CE | N | | |

Technical Specifications

| | | | |
|-------------------|-----------------------|-----------------------|-----------------------------------|
| Electrical Type | Split Phase | Starting Method | SM |
| Poles | 4 | Rotation | Counterclockwise/Clockwise |
| Mounting | Resilient Base | Motor Orientation | ANY |
| Drive End Bearing | BALL | Opp Drive End Bearing | BALL |
| Frame Material | Rolled Steel | Overall Length | 10 in |
| Frame Length | 6.22 in | Shaft Diameter | 0.5 in |
| Shaft Extension | 1.5 in | Thru-bolts Extension | 0 |
| Outline Drawing | 52A101440P4 | Connection Diagram | 52A106478AA |

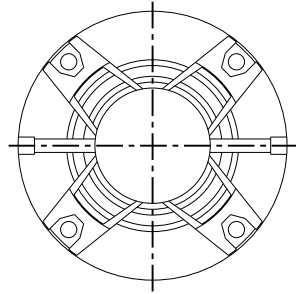
This is an uncontrolled document once printed or downloaded and is subject to change without notice. Date Created: 10/08/2018

THIRD ANGLE PROJECTION

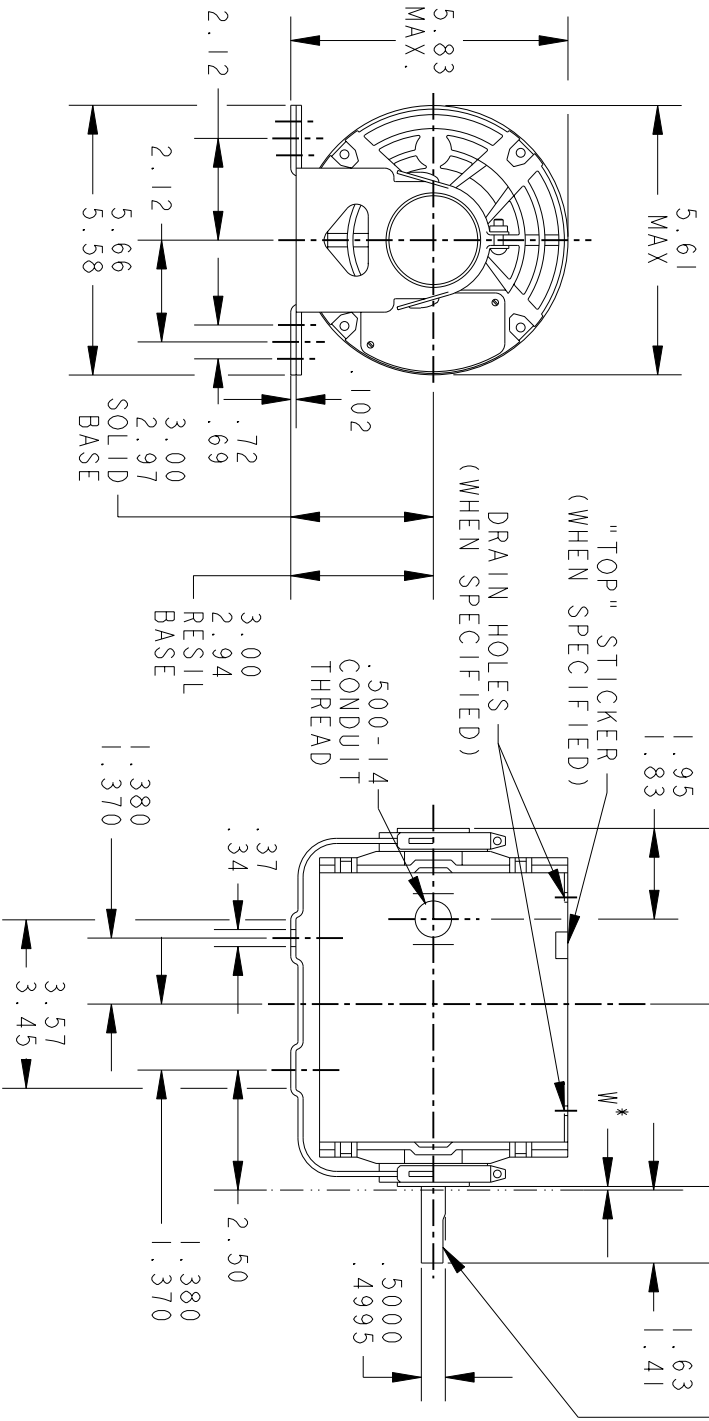


REVISIONS

| REV. | DESCRIPTION | DATE | APPROVED |
|------|----------------------------------|----------|----------|
| 7 | REDRAWN NO CHANGE T196-22390 | 07/10/96 | MDP |
| 8 | CHG TO RBC FORMAT PER IS 05-1777 | 15/12/05 | GOVARDAN |



VIEW SHOWING PE VENTILATION OPENINGS



FOR ADDITIONAL INFO REFER TO:
 APPLIED PRACTICES
 DIMENSIONS ARE IN INCHES
 MATERIAL

| PT | TYPE | GE SIZE | NEMA FR | C | L | PT | TYPE | GE SIZE | NEMA FR | C | L |
|----|------|---------|---------|------|------|----|------|---------|---------|-------|------|
| 3 | KH | 33 | 48 | 9.19 | 3.84 | 6 | KH | 38 | 48 | 11.00 | 5.65 |
| 2 | KH | 32 | 48 | 8.94 | 3.59 | 5 | KH | 37 | 48 | 10.40 | 5.05 |
| 1 | KH | 35 | 48 | 9.57 | 4.22 | 4 | KH | 36 | 48 | 10.00 | 4.65 |

* W IS A CLEARANCE DUE TO VARIATION IN PARTS & ASSEMBLY.

| SIGNATURES | DATE |
|------------------------|--------------|
| MODEL GLB | 11/14/74 |
| DETAIL | |
| CHECKED | |
| ENGRG | |
| MFG | |
| QUALITY | |
| ISSUED | MDP 07/10/96 |
| SOLID MODEL: 52A101440 | |

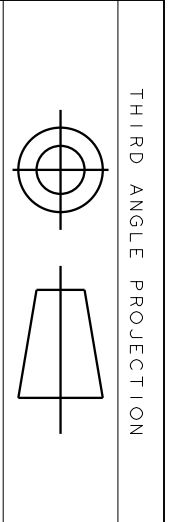


REGAL-BELOTT CORPORATION

OUTLINE

FORM G - GENERAL PURPOSE MOTOR - DRIP PROOF - SOLID OR RESIL BASE - BALL OR SLEEVE BEARING

SCALE: 1.000 REF. No.:
 SIZE DRAWING A
 52A101440
 REV 8
 SHEET 1 of 1



| REV. | DESCRIPTION | DATE | APPROVED |
|------|-----------------------|----------|----------|
| 5 | UPDATED TO RBC FORMAT | 01/09/06 | MAM |

EITHER ROTATION
 SINGLE VOLTAGE
 TYPE KC, KCR, OR KH
 2 SPEED
 POLE CHANGING

T1 OR BLUE

T2 OR WHITE

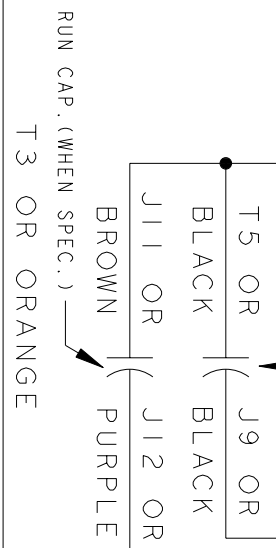
T8 OR RED

MAIN (HI)

MAIN (LO)

START

START CAPACITOR
 FOR KC MOTORS
 ONLY, LEAD T5 OR
 BLACK CONNECTED
 DIRECTLY TO
 SWITCH FOR KH
 MOTORS



BLACK JUMPER LEAD

NOTE #1 - TO REVERSE ROTATION INTERCHANGE BLUE (T1) AND WHITE (T2) LEADS.
 NOTE #2 - WHEN MORE THAN ONE CAPACITOR IS USED CONNECT IN PARALLEL.

SWITCH (D) - 115D9588BA

CONNECTION LABEL - 52X332073

REF. DIAG. - 121A865

| SIGNATURES | DATE |
|--------------------------|--------------------------|
| MODEL M.D.P. | 12/14/87 |
| DETAIL | |
| CHECKED | |
| ENGRG | |
| MFG | |
| QUALITY | |
| ISSUED | M.D.P. 12/14/87 |
| APPLIED PRACTICES | |
| DIMENSIONS ARE IN INCHES | |
| MATERIAL | SOLID MODEL: 52A106478AA |



REGAL-BELOIT CORPORATION

TITLE CONNECTION DIAGRAM

FMF: 5KH36KN114G

52A106478AA

REV 5

SCALE: 1.000 REF. No.:

SHEET 1 of 1